

## free energy-efficient house plans

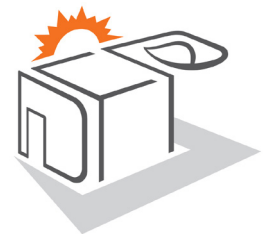


**Design For Place** includes architect-designed floor plans and elevations for a single-storey house, adapted for three block sizes.

Specifications and construction techniques are provided for Australia's major climate zones to achieve a minimum 7 star energy rating.

Commissioned by the Australian Government, the designs are a significant resource for anyone planning a new home.

To find out more and download the plans, go to [www.yourhome.gov.au/house-designs](http://www.yourhome.gov.au/house-designs)



Design For Place

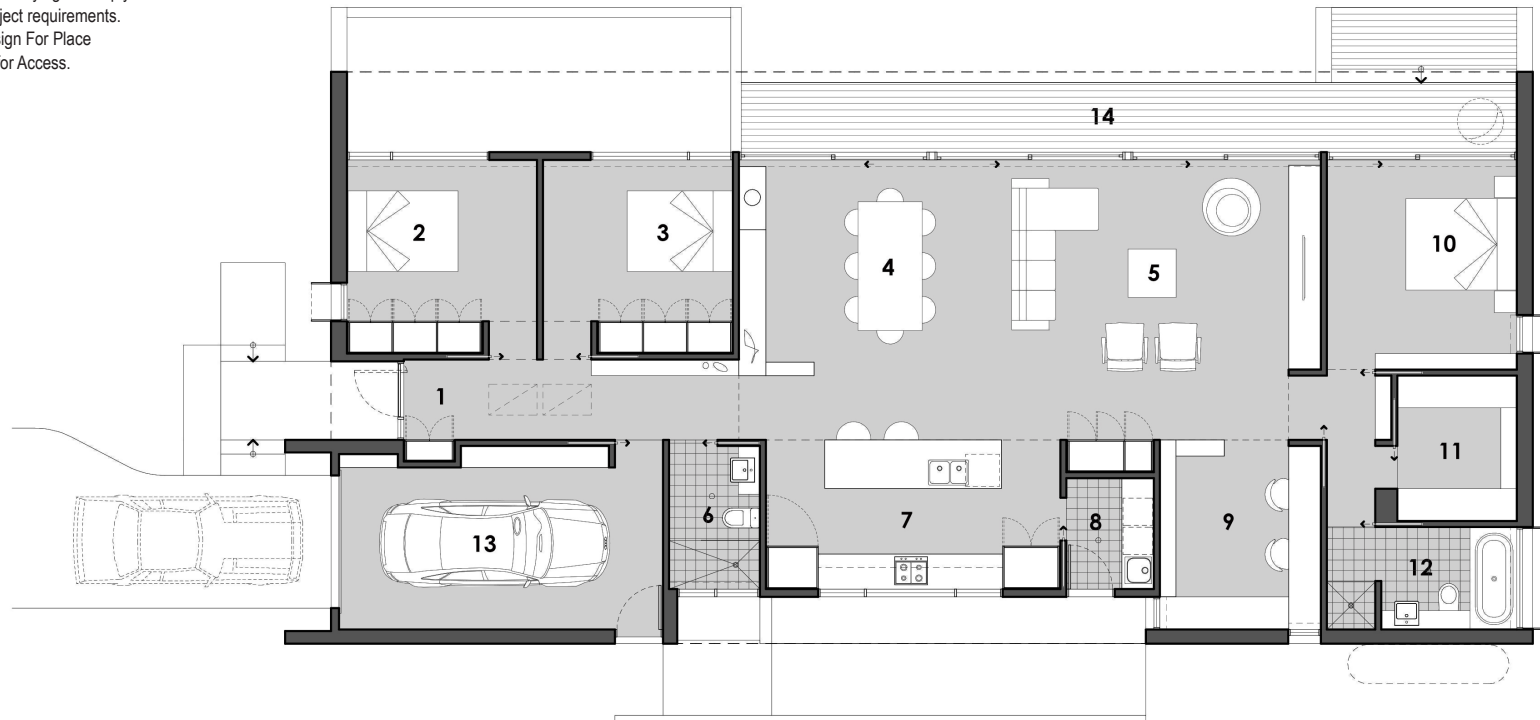
area

ground floor living 172 m<sup>2</sup>  
garage 22 m<sup>2</sup>

**total 194 m<sup>2</sup>**

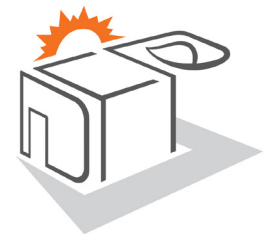
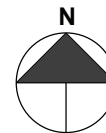
note: GFA calculations do not include  
decks, verandahs, carports, nib walls

These plans will need modifying to comply  
with local legal and project requirements.  
For details see the Design For Place  
Terms and Conditions for Access.



- 1 entry
- 2 bedroom 2
- 3 bedroom 3
- 4 dining
- 5 living
- 6 bathroom
- 7 kitchen
- 8 laundry
- 9 study
- 10 bedroom 1
- 11 robe
- 12 ensuite
- 13 garage
- 14 deck

option 1a - type 1 floor plan



Design For Place