

- LEGEND**
- FG FIXED GLASS  
GLAZING TO CODE REQUIREMENTS
  - CW CASEMENT SASH  
GLAZING TO CODE REQUIREMENTS
  - AW AWNING SASH  
GLAZING TO CODE REQUIREMENTS
  - SD SLIDING DOOR  
GLAZING TO CODE REQUIREMENTS
  - SSD SLIDING STACKER DOOR  
GLAZING TO CODE REQUIREMENTS
  - SW SLIDING WINDOW  
GLAZING TO CODE REQUIREMENTS

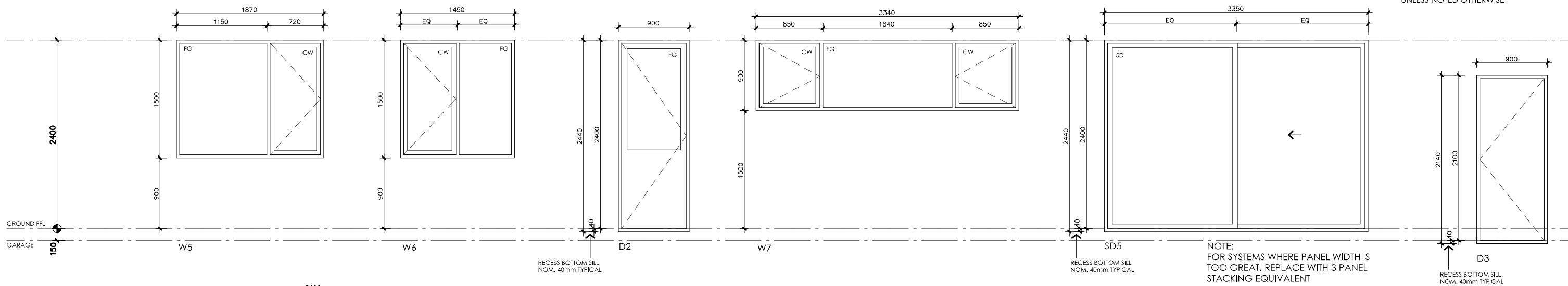
**NOTES**

ALL FRAMES TO BE COMMERCIAL OR SEMI-COMMERCIAL ALUMINIUM FRAMES, INSTALL TO MANUFACTURERS SPEC. PROVIDE MATCHING FLYSCREENS TO ALL OPENABLE SECTIONS AND COLOR MATCHED ALUMINIUM STORM MOULDS AND TRIMS AS REQUIRED

ALL WINDOWS AND DOORS TO BE DOUBLE GLAZED. NOTE THE NEED FOR TOUGHENED LAMINATED SAFETY GLASS TO CODE REQUIREMENTS WHERE REQUIRED.

ALL GLAZING TO AS 1288 AND BCA REQUIREMENTS. PERFORMANCE VALUES TO MATCH ENERGY RATING

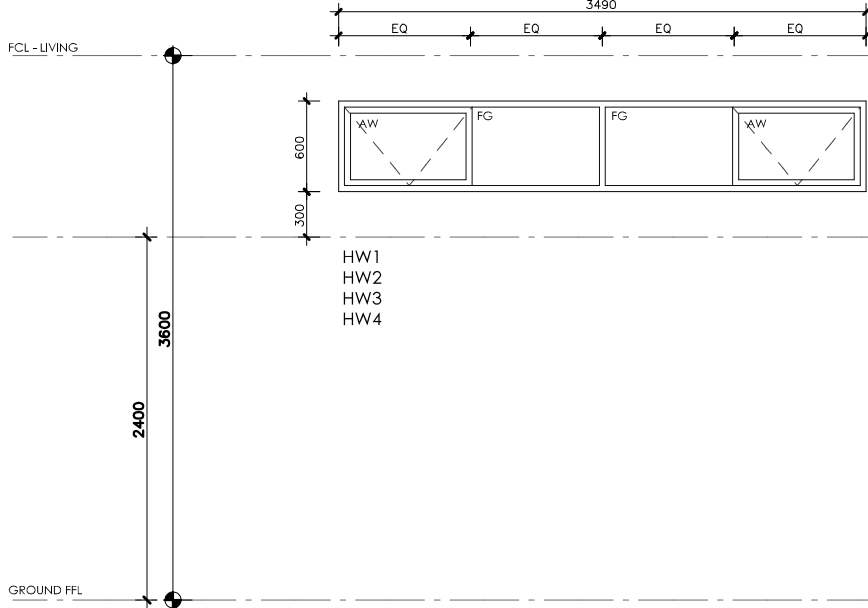
ALL WINDOWS & DOORS VIEWED FROM OUTSIDE UNLESS NOTED OTHERWISE



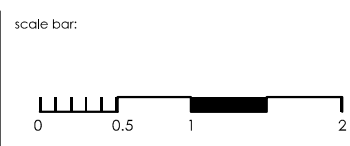
NOTE: FABRICATOR TO CONFIRM WHICH WINDOWS/DOORS REQUIRE LAMINATED SAFETY GLASS AND SPECIFY AND PRICE ACCORDINGLY. ALL GLAZING TO CODE REQUIREMENTS

NOTE: FRAME SECTION WIDTHS DIMENSIONED ARE NOTIONAL ONLY. FABRICATOR TO CONFIRM FRAME SECTION SIZE

NOTE: OVERALL WINDOW DIMENSIONS NOMINAL ONLY - CHECK MEASURE EXISTING OPENING ON SITE PRIOR TO ORDERING



issue	amendment	date



project:  
**DESIGN FOR PLACE**



project stage:  
**PRELIMINARY SKETCH PLANS**

drawing title:  
**OPTION 2A  
TYPE 1  
WINDOW SCHEDULE  
SHEET 1**

date: 2014  
scale: 1:50  
sheet: A3

drawn: BW  
check: BW  
verified: -

drawing number:  
**2A401\_1**

issue:  
-