



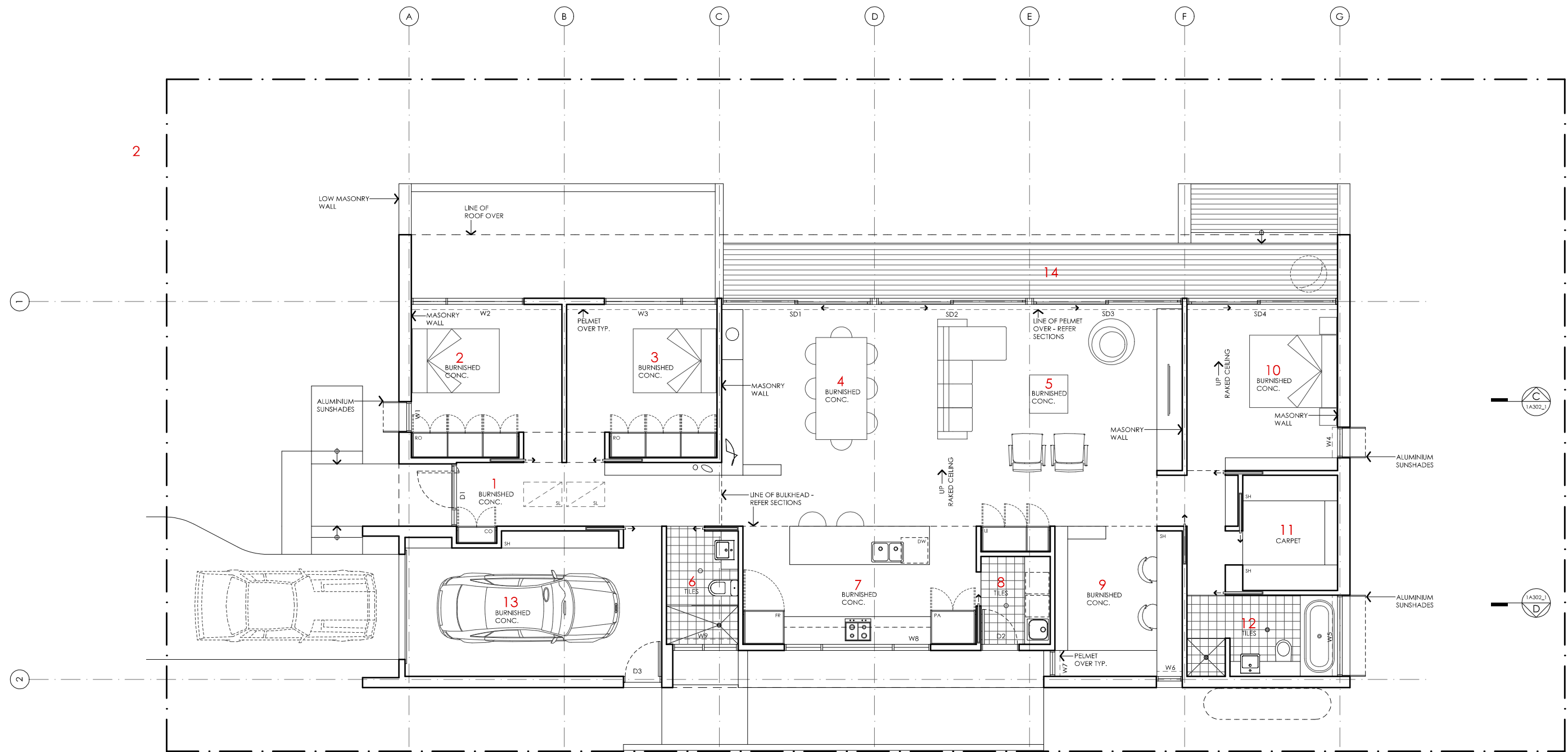


AREA	
GROUND FLOOR LIVING	172 m ²
GARAGE	22 m ²
TOTAL GFA	
194 m ²	
GROUND FLOOR DECKS	30 m ²
INDICATIVE BLOCK SIZE	544 m ²

NOTE: GFA CALCULATIONS DO NOT INCLUDE DECKS, CARPORTS, COURTYARDS, VERANDAHS OR NIB WALLS

BANKSIA HOUSE

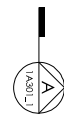
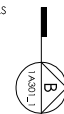
LEGEND N/A	PROJECT  Australian Government  YourHome Australia's guide to environmentally sustainable homes  Design For Place	DESIGN Banksia House	DETAILS
	DISCLAIMER This house plan is a guide only. It does not constitute legal or other professional advice. You should seek legal or other professional advice in relation to your specific circumstances before adopting any recommendation made within it e.g. advice on structural engineering or building certification requirements. The Commonwealth does not accept responsibility for the accuracy or completeness of this plan, its fitness for a particular purpose, or compliance with any regulatory requirements and standards. Further, the Commonwealth also disclaims liability, to the extent permitted by law, for any liabilities, losses, damages and costs arising from any reliance on the contents of this plan.	DESIGNED FOR Perth Technical drawings should be read with the Banksia House Perth 'Design Options' document which includes building specifications and rating information.	Drawing title: Site Plan Scale: 1:200 Paper size: A3 Drawing number: 1/13 Date issued: March 2020 Project stage: Preliminary 







- KEY**
- 1 ENTRY
 - 2 BEDROOM 3
 - 3 BEDROOM 2
 - 4 DINING
 - 5 LIVING
 - 6 BATHROOM
 - 7 KITCHEN
 - 8 LAUNDRY
 - 9 STUDY
 - 10 BEDROOM 1
 - 11 WALK IN ROBE
 - 12 ENSUITE
 - 13 GARAGE
 - 14 DECK

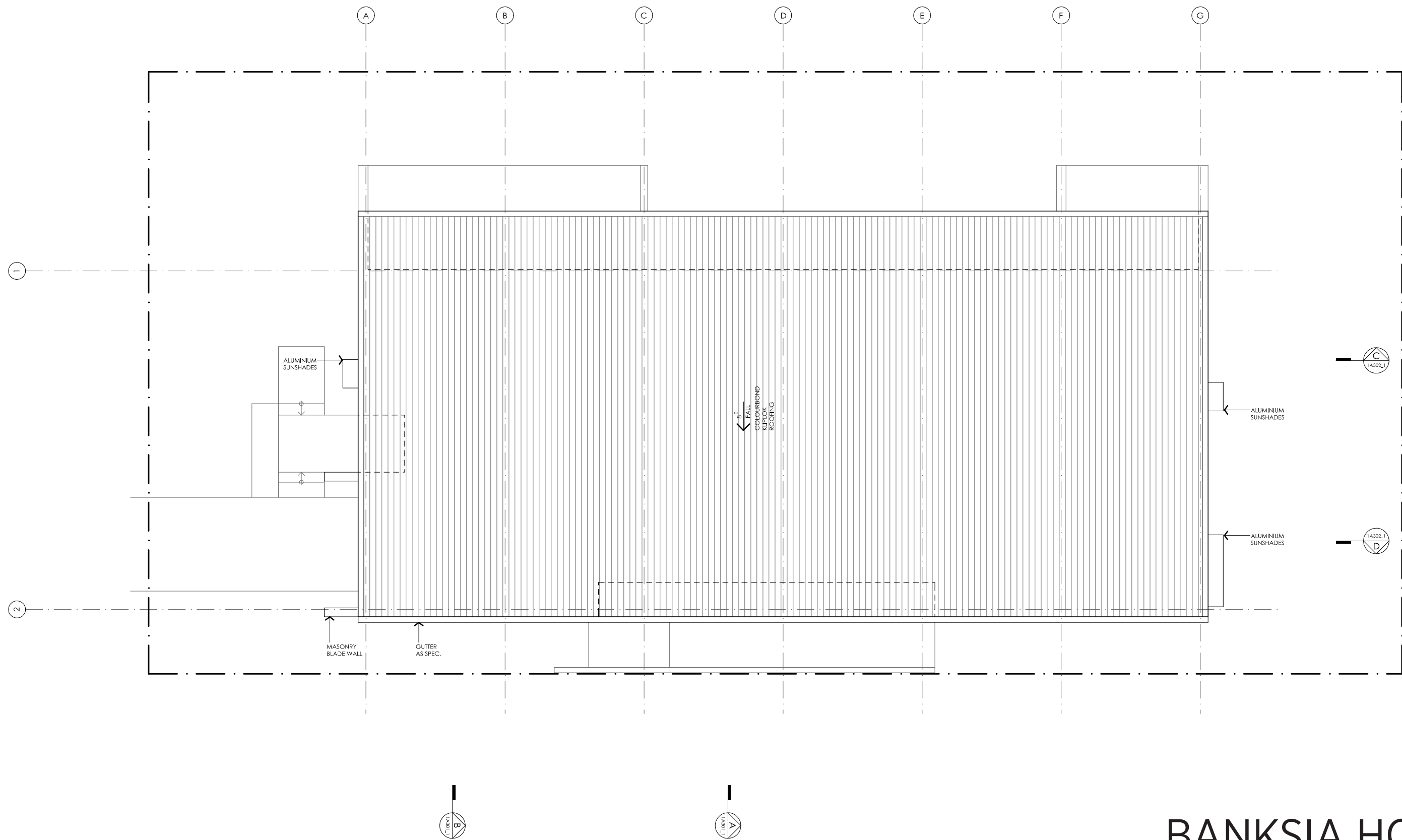
AREA	
GROUND FLOOR LIVING	172 m ²
GARAGE	22 m ²
TOTAL GFA	194 m²
GROUND FLOOR DECKS	30 m ²
INDICATIVE BLOCK SIZE	544 m ²

NOTE: GFA CALCULATIONS DO NOT INCLUDE DECKS, CARPORTS, COURTYARDS, VERANDAHS OR NIB WALLS



BANKSIA HOUSE

LEGEND N/A	PROJECT  Australian Government  YourHome Australia's guide to environmentally sustainable homes  Design For Place	DESIGN Banksia House	DETAILS Drawing title: Floor Plan Scale: 1:100 Paper size: A3
	DISCLAIMER This house plan is a guide only. It does not constitute legal or other professional advice. You should seek legal or other professional advice in relation to your specific circumstances before adopting any recommendation made within it e.g. advice on structural engineering or building certification requirements. The Commonwealth does not accept responsibility for the accuracy or completeness of this plan, its fitness for a particular purpose, or compliance with any regulatory requirements and standards. Further, the Commonwealth also disclaims liability, to the extent permitted by law, for any liabilities, losses, damages and costs arising from any reliance on the contents of this plan.	DESIGNED FOR Perth Technical drawings should be read with the Banksia House Perth 'Design Options' document which includes building specifications and rating information.	Drawing number: 2/13 Date issued: March 2020 Project stage: Preliminary 



BANKSIA HOUSE

LEGEND
N/A

PROJECT



DESIGN

Banksia House

**DESIGNED FOR
Perth**

Technical drawings should be read with the Banksia House Perth 'Design Options' document which includes building specifications and rating information.

DETAILS

Drawing title: Roof Plan

Scale: 1:100

Paper size: A3

Drawing number: 3/13

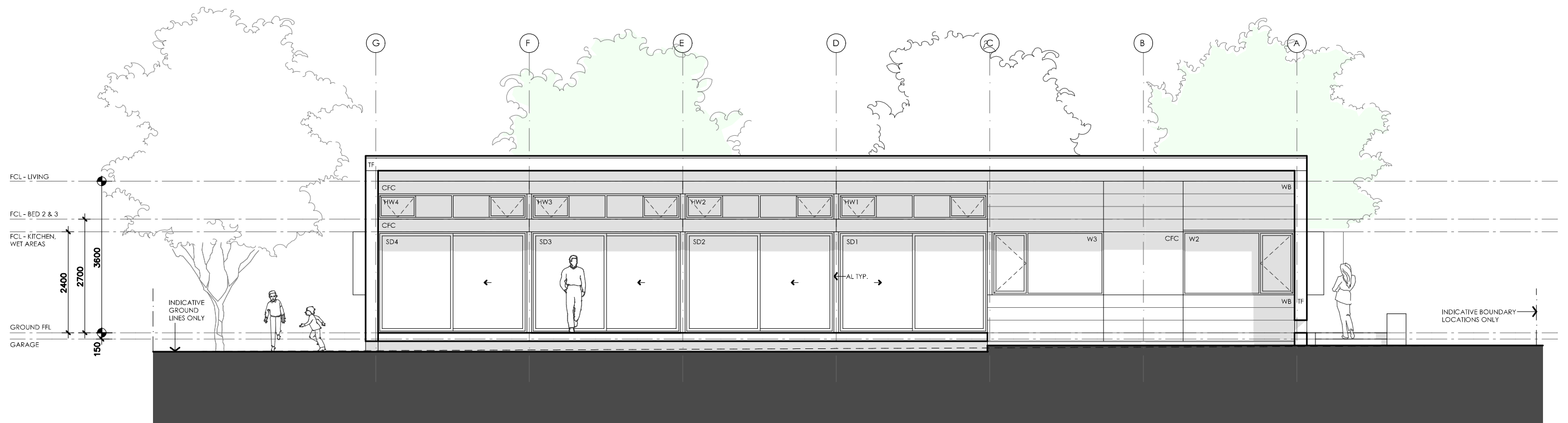
Date issued: March 2020

Project stage: Preliminary



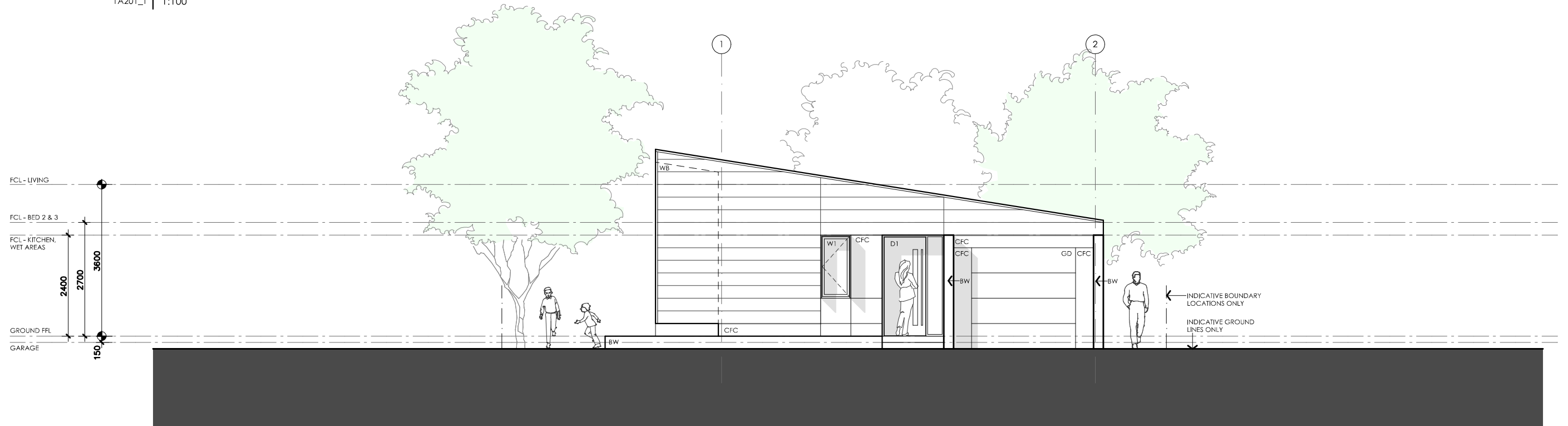
DISCLAIMER

This house plan is a guide only. It does not constitute legal or other professional advice. You should seek legal or other professional advice in relation to your specific circumstances before adopting any recommendation made within it e.g. advice on structural engineering or building certification requirements. The Commonwealth does not accept responsibility for the accuracy or completeness of this plan, its fitness for a particular purpose, or compliance with any regulatory requirements and standards. Further, the Commonwealth also disclaims liability, to the extent permitted by law, for any liabilities, losses, damages and costs arising from any reliance on the contents of this plan.



01 NORTH ELEVATION

1A201_1 1:100



02 WEST ELEVATION

1A201_1 1:100

BANKSIA HOUSE

LEGEND

TF	TIMBER FASCIA PROFILE/COLOUR AS SPEC
WB	WEATHERBOARD LINING ON TIMBER FRAMING & BATTENS PROFILE/COLOUR AS SPEC
BW	FACE BRICK WORK BRICK AS SPEC
CFC	COMPRESSED FC CLADDING ON TIMBER FRAMING & BATTENS PROFILE/COLOUR AS SPEC
SB	STEEL BEAM PAINT FINISH AS SPEC
GD	GARAGE DOOR MAKE & COLOUR AS SPEC
AL	ALUMINIUM COVER PANEL - FOLDED FINISH/COLOUR TO MATCH WINDOW FRAMES

PROJECT



DISCLAIMER

This house plan is a guide only. It does not constitute legal or other professional advice. You should seek legal or other professional advice in relation to your specific circumstances before adopting any recommendation made within it e.g. advice on structural engineering or building certification requirements. The Commonwealth does not accept responsibility for the accuracy or completeness of this plan, its fitness for a particular purpose, or compliance with any regulatory requirements and standards. Further, the Commonwealth also disclaims liability, to the extent permitted by law, for any liabilities, losses, damages and costs arising from any reliance on the contents of this plan.

DESIGN

Banksia House

**DESIGNED FOR
Perth**

Technical drawings should be read with the Banksia House Perth 'Design Options' document which includes building specifications and rating information.

DETAILS

Drawing title: Elevations

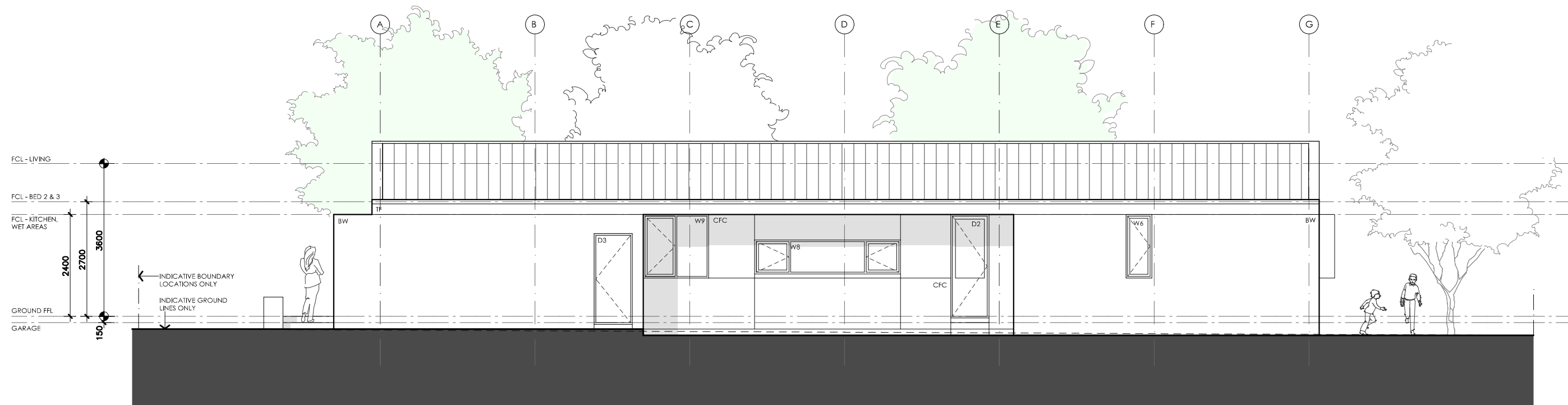
Scale: 1:100

Paper size: A3

Drawing number: 4/13

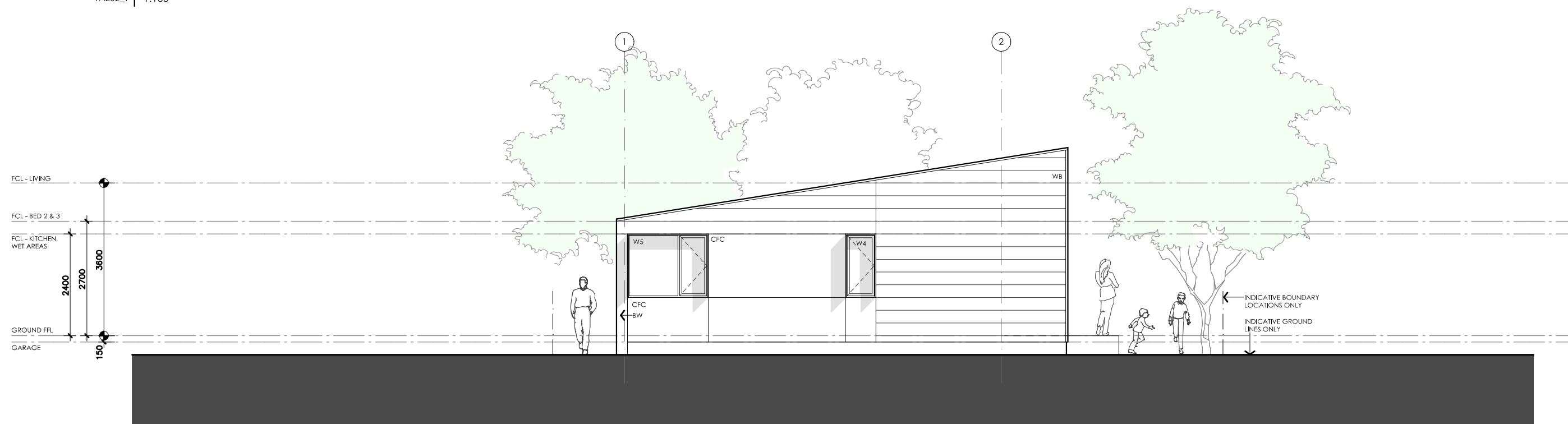
Date issued: March 2020

Project stage: Preliminary



01 | SOUTH ELEVATION

1A202_1 1:100



02 | EAST ELEVATION

1A202_1 1:100

BANKSIA HOUSE

LEGEND

- TF TIMBER FASCIA
PROFILE/COLOUR AS SPEC
- WB WEATHERBOARD LINING ON TIMBER
FRAMING & BATTENS
PROFILE/COLOUR AS SPEC
- BW FACE BRICK WORK
BRICK AS SPEC
- CFC COMPRESSED FC CLADDING ON TIMBER
FRAMING & BATTENS
PROFILE/COLOUR AS SPEC
- SB STEEL BEAM
PAINT FINISH AS SPEC.
- GD GARAGE DOOR
MAKE & COLOUR AS SPEC
- AL ALUMINIUM COVER PANEL - FOLDED
FINISH/COLOUR TO MATCH WINDOW FRAMES

PROJECT



DISCLAIMER

This house plan is a guide only. It does not constitute legal or other professional advice. You should seek legal or other professional advice in relation to your specific circumstances before adopting any recommendation made within it e.g. advice on structural engineering or building certification requirements. The Commonwealth does not accept responsibility for the accuracy or completeness of this plan, its fitness for a particular purpose, or compliance with any regulatory requirements and standards. Further, the Commonwealth also disclaims liability, to the extent permitted by law, for any liabilities, losses, damages and costs arising from any reliance on the contents of this plan.

DESIGN

Banksia House

DESIGNED FOR
Perth

Technical drawings should be read with the Banksia House Perth 'Design Options' document which includes building specifications and rating information.

DETAILS

Drawing title: Elevations

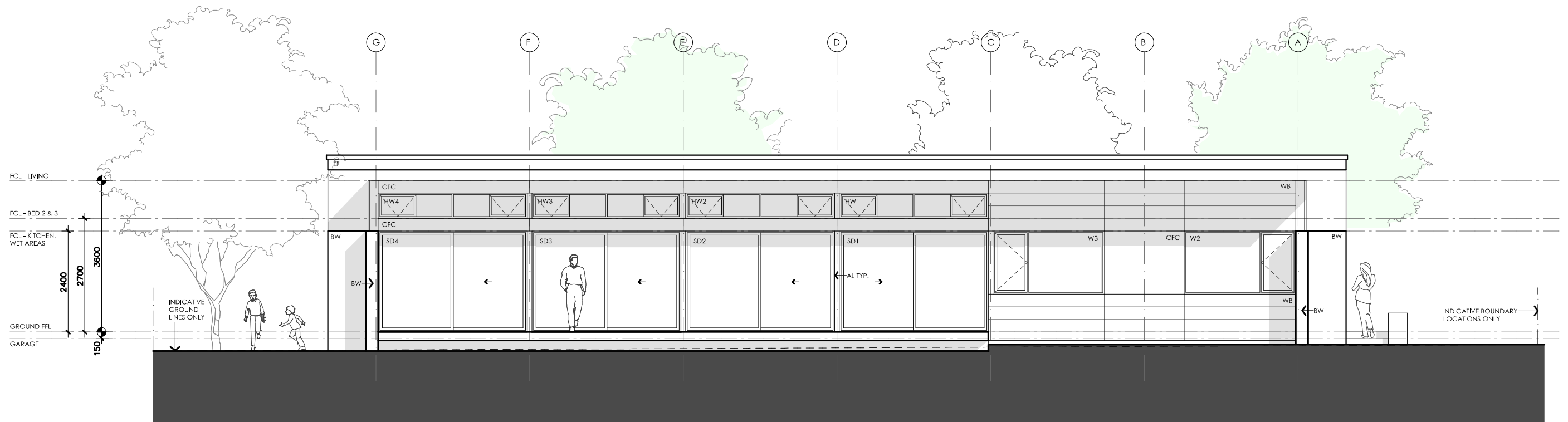
Scale: 1:100

Paper size: A3

Drawing number: 5/13

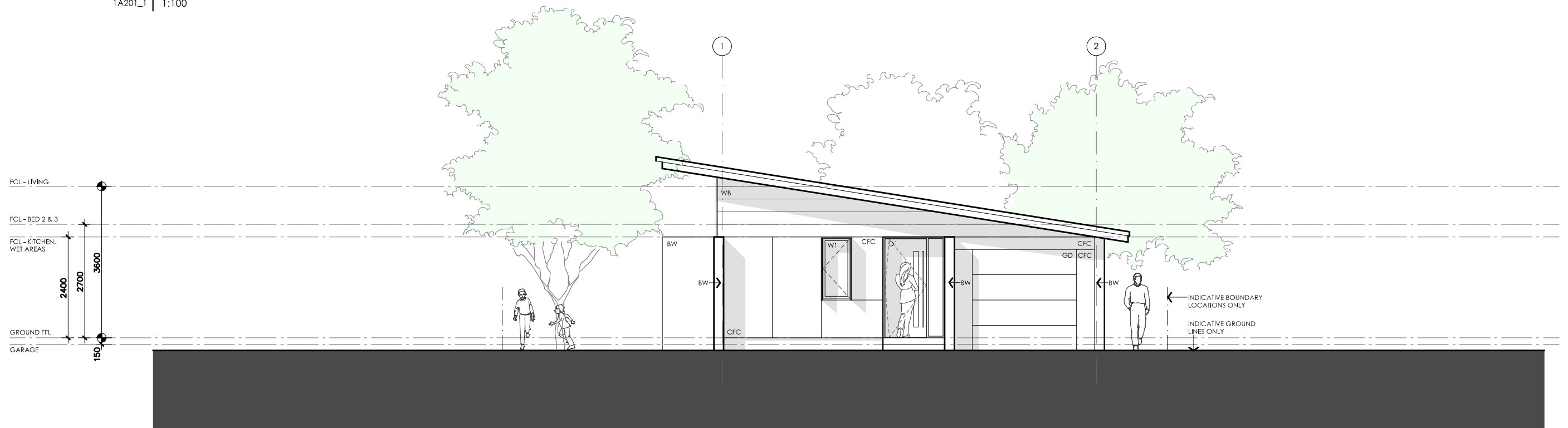
Date issued: March 2020

Project stage: Preliminary



01 NORTH ELEVATION

1A201_1 1:100



02 WEST ELEVATION

1A201_1 1:100

BANKSIA HOUSE

LEGEND

TF	TIMBER FASCIA PROFILE/COLOUR AS SPEC
WB	WEATHERBOARD LINING ON TIMBER FRAMING & BATTENS PROFILE/COLOUR AS SPEC
BW	FACE BRICK WORK BRICK AS SPEC
CFC	COMPRESSED FC CLADDING ON TIMBER FRAMING & BATTENS PROFILE/COLOUR AS SPEC
SB	STEEL BEAM PAINT FINISH AS SPEC.
GD	GARAGE DOOR MAKE & COLOUR AS SPEC
AL	ALUMINIUM COVER PANEL - FOLDED FINISH/COLOUR TO MATCH WINDOW FRAMES

PROJECT



Australian Government



Design For Place

DISCLAIMER

This house plan is a guide only. It does not constitute legal or other professional advice. You should seek legal or other professional advice in relation to your specific circumstances before adopting any recommendation made within it e.g. advice on structural engineering or building certification requirements. The Commonwealth does not accept responsibility for the accuracy or completeness of this plan, its fitness for a particular purpose, or compliance with any regulatory requirements and standards. Further, the Commonwealth also disclaims liability, to the extent permitted by law, for any liabilities, losses, damages and costs arising from any reliance on the contents of this plan.

DESIGN

Banksia House

DESIGNED FOR

Perth

Technical drawings should be read with the Banksia House Perth 'Design Options' document which includes building specifications and rating information.

DETAILS

Drawing title: Elevations – alt. roof line

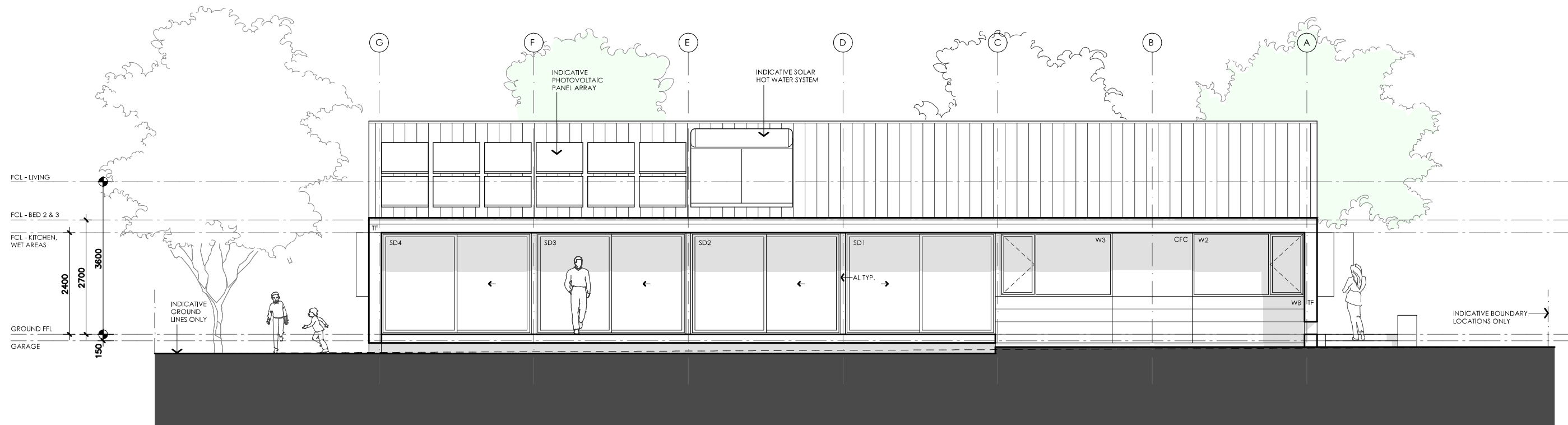
Scale: 1:100

Paper size: A3

Drawing number: 6/13

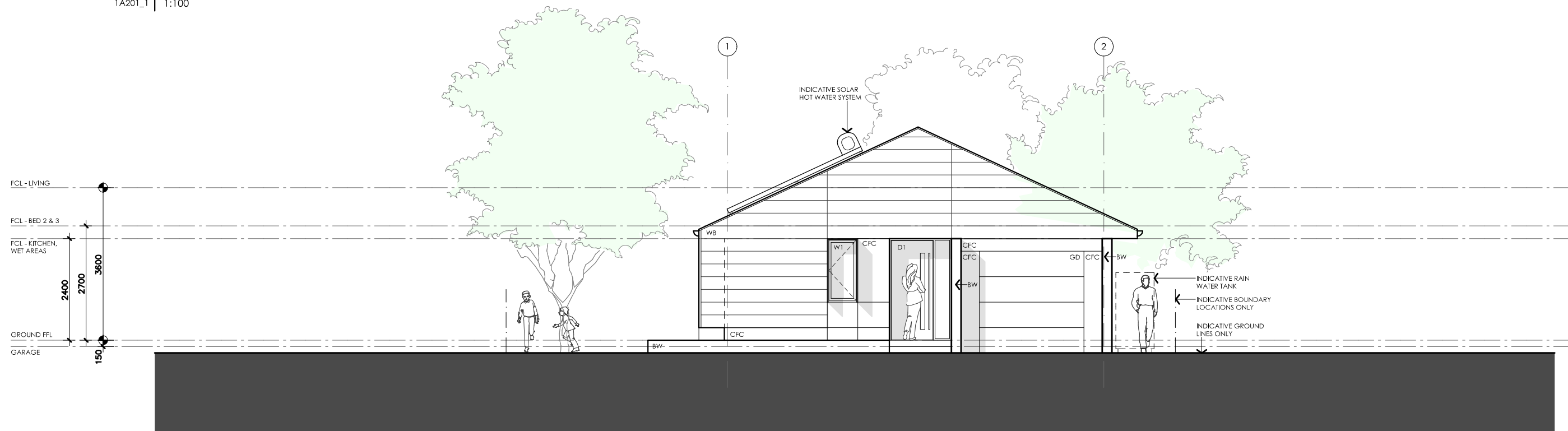
Date issued: March 2020

Project stage: Preliminary



01 NORTH ELEVATION

1A201_1 1:100



02 WEST ELEVATION

1A201_1 1:100

BANKSIA HOUSE

LEGEND

TF	TIMBER FASCIA PROFILE/COLOUR AS SPEC
WB	WEATHERBOARD LINING ON TIMBER FRAMING & BATTENS PROFILE/COLOUR AS SPEC
BW	FACE BRICK WORK BRICK AS SPEC
CFC	COMPRESSED FC CLADDING ON TIMBER FRAMING & BATTENS PROFILE/COLOUR AS SPEC
SB	STEEL BEAM PAINT FINISH AS SPEC.
GD	GARAGE DOOR MAKE & COLOUR AS SPEC
AL	ALUMINIUM COVER PANEL - FOLDED FINISH/COLOUR TO MATCH WINDOW FRAMES

PROJECT



DISCLAIMER

This house plan is a guide only. It does not constitute legal or other professional advice. You should seek legal or other professional advice in relation to your specific circumstances before adopting any recommendation made within it e.g. advice on structural engineering or building certification requirements. The Commonwealth does not accept responsibility for the accuracy or completeness of this plan, its fitness for a particular purpose, or compliance with any regulatory requirements and standards. Further, the Commonwealth also disclaims liability, to the extent permitted by law, for any liabilities, losses, damages and costs arising from any reliance on the contents of this plan.

DESIGN

Banksia House

**DESIGNED FOR
Perth**

Technical drawings should be read with the Banksia House Perth 'Design Options' document which includes building specifications and rating information.

DETAILS

Drawing title: Elevations - alt. roof line

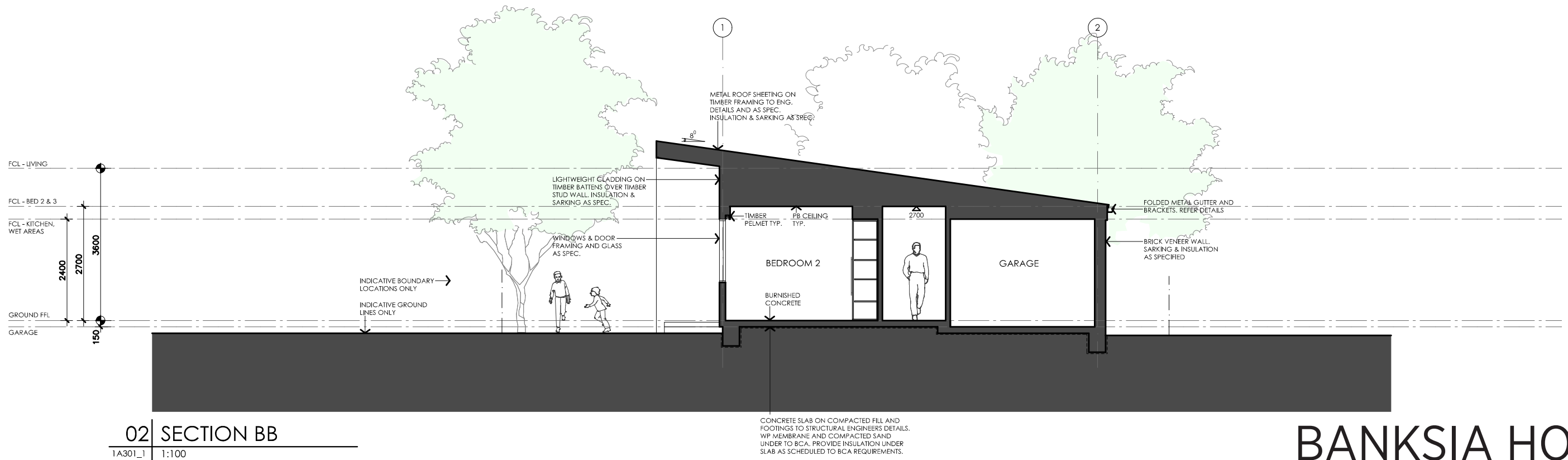
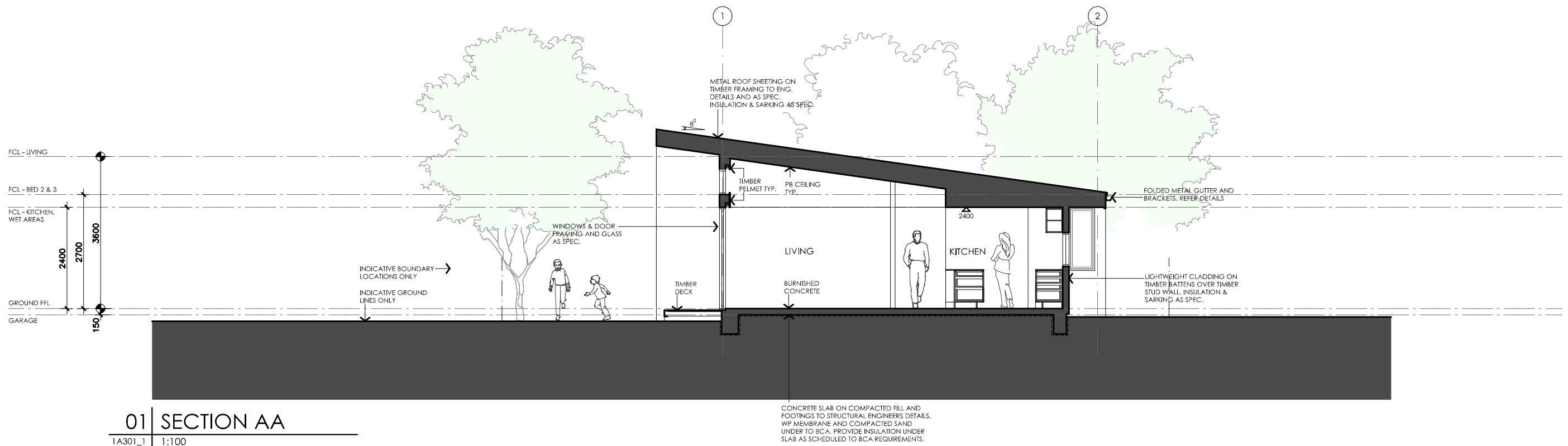
Scale: 1:100

Paper size: A3


Drawing number: 7/13

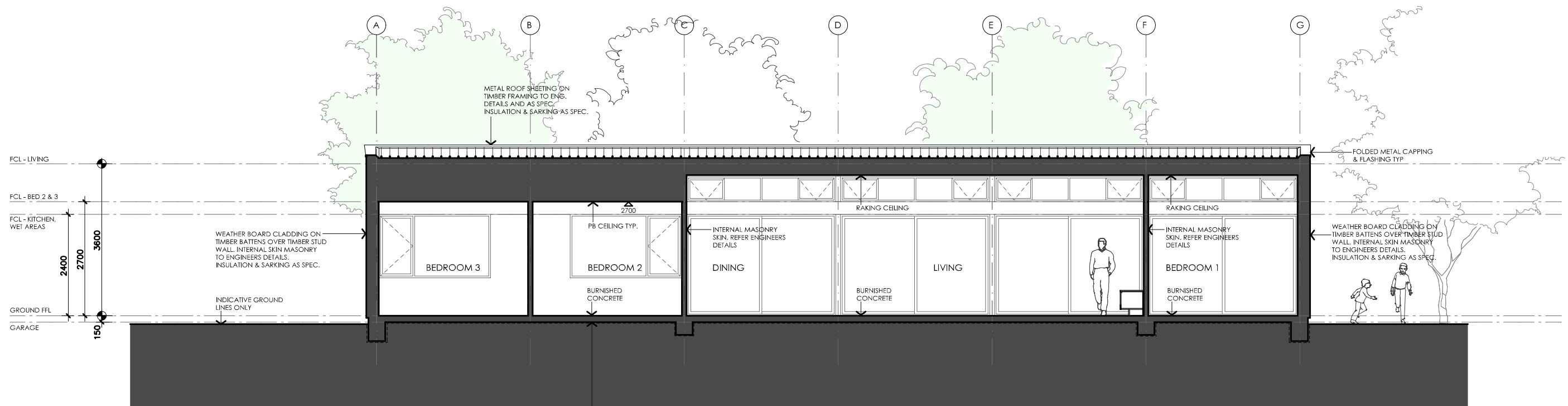
Date issued: March 2020

Project stage: Preliminary

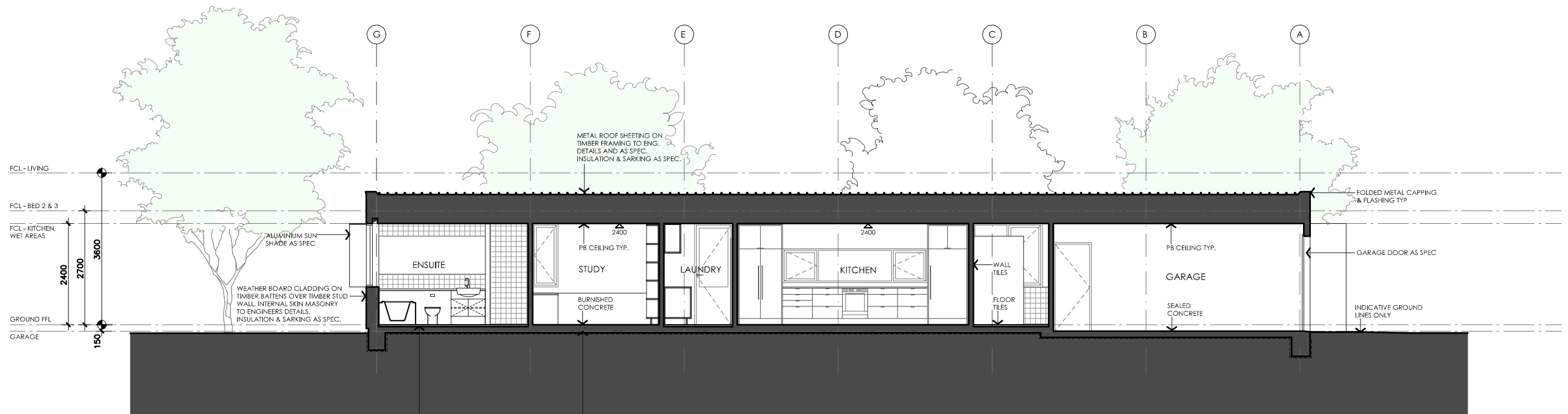


BANKSIA HOUSE

LEGEND <ul style="list-style-type: none">TF TIMBER FASCIA, PROFILE/COLOUR AS SPECWB WEATHERBOARD LINING ON TIMBER FRAMING & BATTENS, PROFILE/COLOUR AS SPECBW FACE BRICK WORK, BRICK AS SPECCFC COMPRESSED FC CLADDING ON TIMBER FRAMING & BATTENS, PROFILE/COLOUR AS SPECSB STEEL BEAM, PAINT FINISH AS SPEC.GD GARAGE DOOR, MAKE & COLOUR AS SPECAL ALUMINIUM COVER PANEL - FOLDED FINISH/COLOUR TO MATCH WINDOW FRAMES	PROJECT <div>Australian Government</div> <div>YourHome Australia's guide to environmentally sustainable homes</div> <div>Design For Place</div>	DESIGN Banksia House DESIGNED FOR Perth <p>Technical drawings should be read with the Banksia House Perth 'Design Options' document which includes building specifications and rating information.</p>	DETAILS <p>Drawing title: Sections</p> <p>Scale: 1:100</p> <p>Paper size: A3</p> <p>Drawing number: 8/13</p> <p>Date issued: March 2020</p> <p>Project stage: Preliminary</p>
DISCLAIMER <p>This house plan is a guide only. It does not constitute legal or other professional advice. You should seek legal or other professional advice in relation to your specific circumstances before adopting any recommendation made within it e.g. advice on structural engineering or building certification requirements. The Commonwealth does not accept responsibility for the accuracy or completeness of this plan, its fitness for a particular purpose, or compliance with any regulatory requirements and standards. Further, the Commonwealth also disclaims liability, to the extent permitted by law, for any liabilities, losses, damages and costs arising from any reliance on the contents of this plan.</p>			






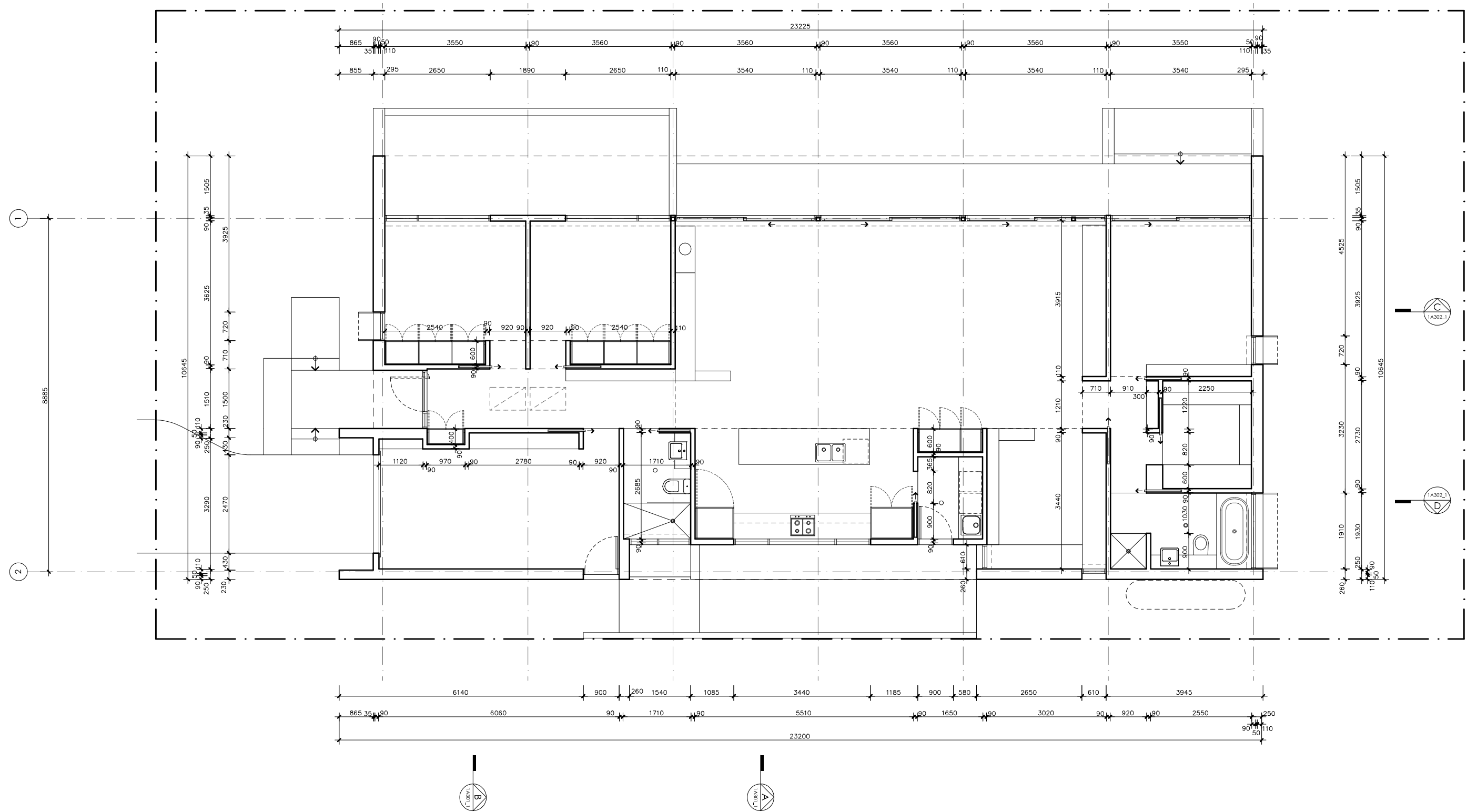
01 | SECTION CC
1A302_1 | 1:100







02 | SECTION DD
1A302_1 | 1:100

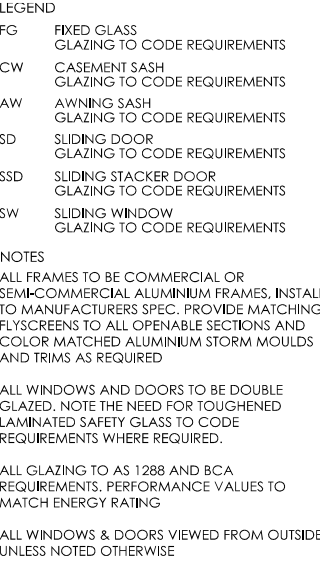
BANKSIA HOUSE

<p>LEGEND</p> <p>TF TIMBER FASCIA PROFILE/COLOUR AS SPEC</p> <p>WB WEATHERBOARD LINING ON TIMBER FRAMING & BATTENS PROFILE/COLOUR AS SPEC</p> <p>BW FACE BRICK WORK BRICK AS SPEC</p> <p>CFC COMPRESSED FC CLADDING ON TIMBER FRAMING & BATTENS PROFILE/COLOUR AS SPEC</p> <p>SB STEEL BEAM PAINT FINISH AS SPEC.</p> <p>GD GARAGE DOOR MAKE & COLOUR AS SPEC</p> <p>AL ALUMINIUM COVER PANEL - FOLDED FINISH/COLOUR TO MATCH WINDOW FRAMES</p>	<p>PROJECT</p> <p> Australian Government</p> <p> YourHome Australia's guide to environmentally sustainable homes</p> <p> Design For Place</p> <p>DISCLAIMER</p> <p>This house plan is a guide only. It does not constitute legal or other professional advice. You should seek legal or other professional advice in relation to your specific circumstances before adopting any recommendation made within it e.g. advice on structural engineering or building certification requirements. The Commonwealth does not accept responsibility for the accuracy or completeness of this plan, its fitness for a particular purpose, or compliance with any regulatory requirements and standards. Further, the Commonwealth also disclaims liability, to the extent permitted by law, for any liabilities, losses, damages and costs arising from any reliance on the contents of this plan.</p>	<p>DESIGN</p> <p>Banksia House</p> <p>DESIGNED FOR</p> <p>Perth</p> <p>Technical drawings should be read with the Banksia House Perth 'Design Options' document which includes building specifications and rating information.</p>	<p>DETAILS</p> <p>Drawing title: Sections</p> <p>Scale: 1:100</p> <p>Paper size: A3</p> <p>Drawing number: 9/13</p> <p>Date issued: March 2020</p> <p>Project stage: Preliminary</p>
--	--	--	---

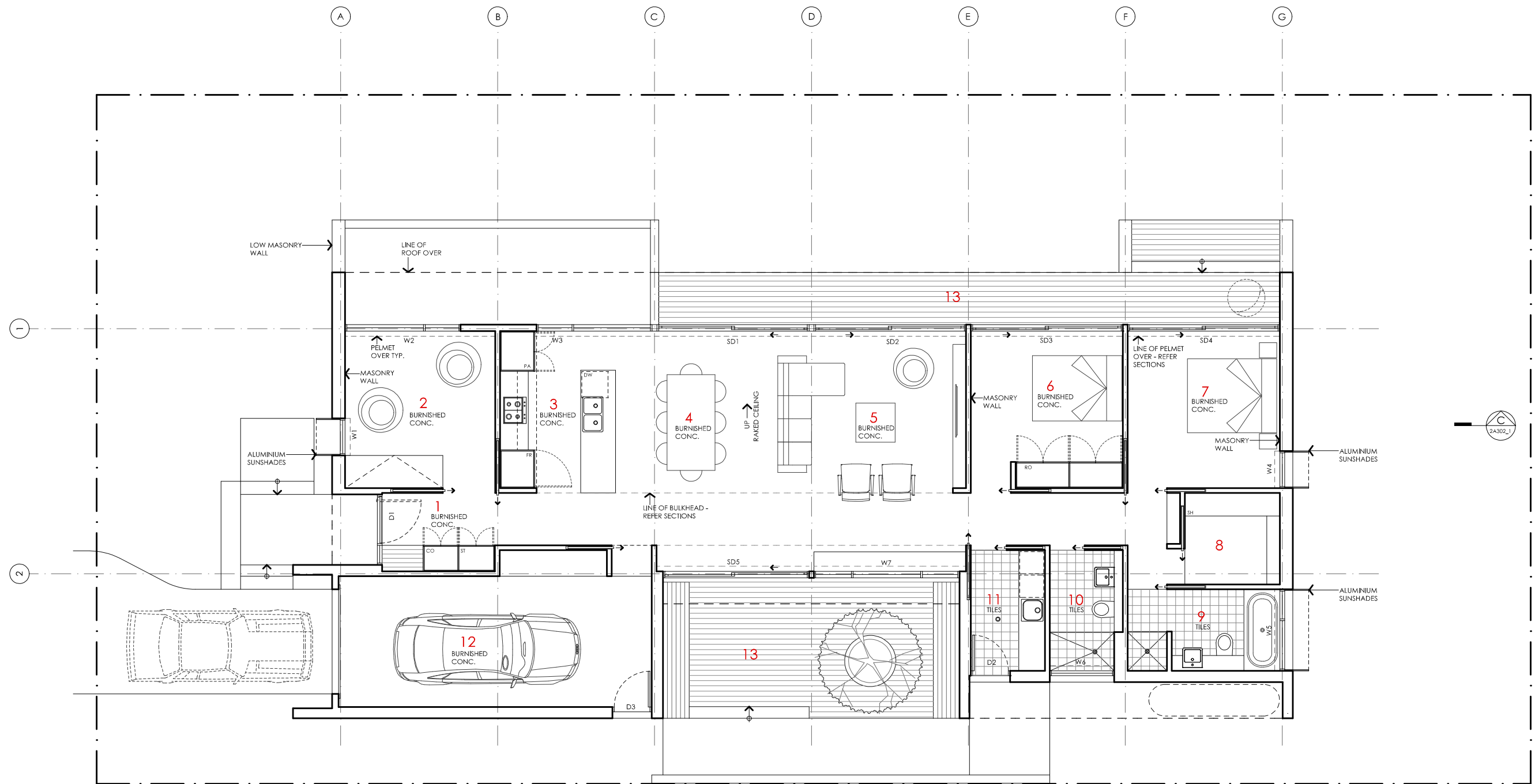


BANKSIA HOUSE

LEGEND N/A	PROJECT  Australian Government  YourHome Australia's guide to environmentally sustainable homes  Design For Place	DESIGN Banksia House DESIGNED FOR Perth	DETAILS Drawing title: Wall Setout Plan Scale: 1:100 Paper size: A3
	DISCLAIMER <p>This house plan is a guide only. It does not constitute legal or other professional advice. You should seek legal or other professional advice in relation to your specific circumstances before adopting any recommendation made within it e.g. advice on structural engineering or building certification requirements. The Commonwealth does not accept responsibility for the accuracy or completeness of this plan, its fitness for a particular purpose, or compliance with any regulatory requirements and standards. Further, the Commonwealth also disclaims liability, to the extent permitted by law, for any liabilities, losses, damages and costs arising from any reliance on the contents of this plan.</p>	Technical drawings should be read with the Banksia House Perth 'Design Options' document which includes building specifications and rating information.	Drawing number: 10/13 Date issued: March 2020 Project stage: Preliminary 



LEGEND N/A	PROJECT <div> Australian Government</div> <div> YourHome Australia's guide to environmentally sustainable homes</div> <div> Design For Place</div>	DESIGN Banksia House DESIGNED FOR Perth	DETAILS Drawing title: Window Schedule Scale: 1:100 Paper size: A3 Drawing number: 11/13 Date issued: March 2020 Project stage: Preliminary
	DISCLAIMER <p>This house plan is a guide only. It does not constitute legal or other professional advice. You should seek legal or other professional advice in relation to your specific circumstances before adopting any recommendation made within it e.g. advice on structural engineering or building certification requirements. The Commonwealth does not accept responsibility for the accuracy or completeness of this plan, its fitness for a particular purpose, or compliance with any regulatory requirements and standards. Further, the Commonwealth also disclaims liability, to the extent permitted by law, for any liabilities, losses, damages and costs arising from any reliance on the contents of this plan.</p>	Technical drawings should be read with the Banksia House Perth 'Design Options' document which includes building specifications and rating information.	



KEY

- 1 ENTRY
- 2 STUDY / BEDROOM 3
- 3 KITCHEN
- 4 DINING
- 5 LIVING
- 6 BEDROOM 2
- 7 BEDROOM 1
- 8 ROBE
- 9 ENSUITE
- 10 BATHROOM
- 11 LAUNDRY
- 12 GARAGE
- 13 DECK

AREA

GROUND FLOOR LIVING	141 m ²
GARAGE	28 m ²
TOTAL GFA	169 m²
GROUND FLOOR DECKS	35 m ²
INDICATIVE BLOCK SIZE	544 m ²

NOTE: GFA CALCULATIONS DO NOT INCLUDE DECKS, CARPORTS, COURTYARDS, VERANDAHS OR NIB WALLS

BANKSIA HOUSE

LEGEND

N/A

PROJECT



DESIGN

Banksia House

DESIGNED FOR

Perth

Technical drawings should be read with the Banksia House Perth 'Design Options' document which includes building specifications and rating information.

DETAILS

Drawing title: Alt Floor Plan - 2 Bedroom

Scale: 1:100

Paper size: A3

Drawing number: 12/13

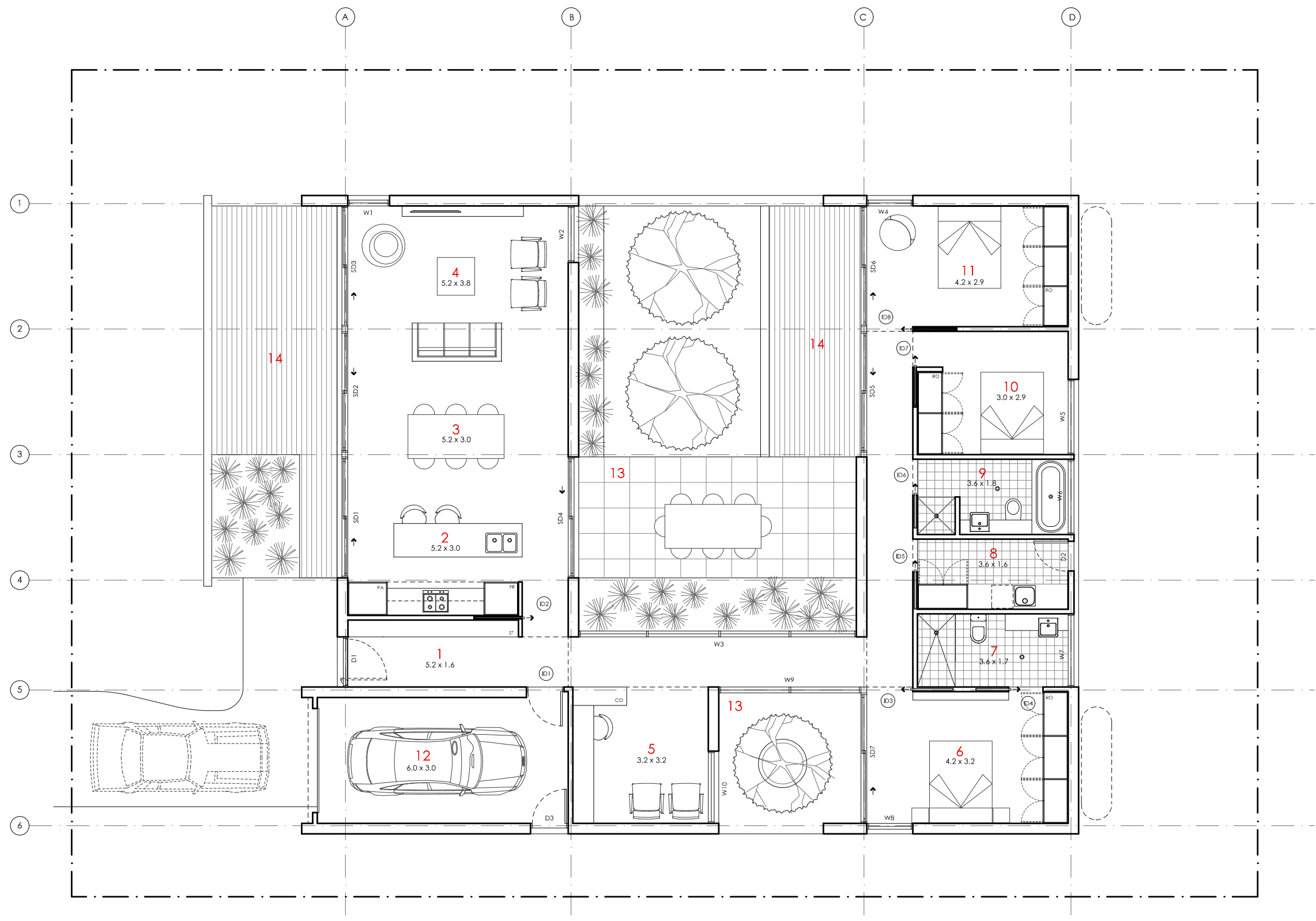
Date issued: March 2020

Project stage: Preliminary



DISCLAIMER

This house plan is a guide only. It does not constitute legal or other professional advice. You should seek legal or other professional advice in relation to your specific circumstances before adopting any recommendation made within it e.g. advice on structural engineering or building certification requirements. The Commonwealth does not accept responsibility for the accuracy or completeness of this plan, its fitness for a particular purpose, or compliance with any regulatory requirements and standards. Further, the Commonwealth also disclaims liability, to the extent permitted by law, for any liabilities, losses, damages and costs arising from any reliance on the contents of this plan.



- KEY**
- 1 ENTRY
 - 2 KITCHEN
 - 3 DINING
 - 4 LIVING
 - 5 STUDY
 - 6 BEDROOM 1
 - 7 ENSUITE
 - 8 LAUNDRY
 - 9 BATHROOM
 - 10 BEDROOM 2
 - 11 BEDROOM 3
 - 12 GARAGE
 - 13 COURTYARD
 - 14 DECK

AREA

GROUND FLOOR LIVING	167 m ²
GARAGE	22 m ²
TOTAL GFA	189 m²
GROUND FLOOR DECKS	25 m ²

INDICATIVE BLOCK SIZE 560 m²

NOTE: GFA CALCULATIONS
DO NOT INCLUDE DECKS,
CARPORTS, COURTYARDS,
VERANDAHs

BANKSIA HOUSE

LEGEND

N/A

PROJECT



DESIGN

Banksia House

DESIGNED FOR

Perth

Technical drawings should be read with the Banksia House Perth 'Design Options' document which includes building specifications and rating information.

DETAILS

Drawing title: Alt Floor Plan - Courtyard

Scale: 1:100

Paper size: A3

Drawing number: 13/13

Date issued: March 2020

Project stage: Preliminary



DISCLAIMER

This house plan is a guide only. It does not constitute legal or other professional advice. You should seek legal or other professional advice in relation to your specific circumstances before adopting any recommendation made within it e.g. advice on structural engineering or building certification requirements. The Commonwealth does not accept responsibility for the accuracy or completeness of this plan, its fitness for a particular purpose, or compliance with any regulatory requirements and standards. Further, the Commonwealth also disclaims liability, to the extent permitted by law, for any liabilities, losses, damages and costs arising from any reliance on the contents of this plan.