

AREA



GROUND FLOOR LIVING 172 m²
 GARAGE 22 m²

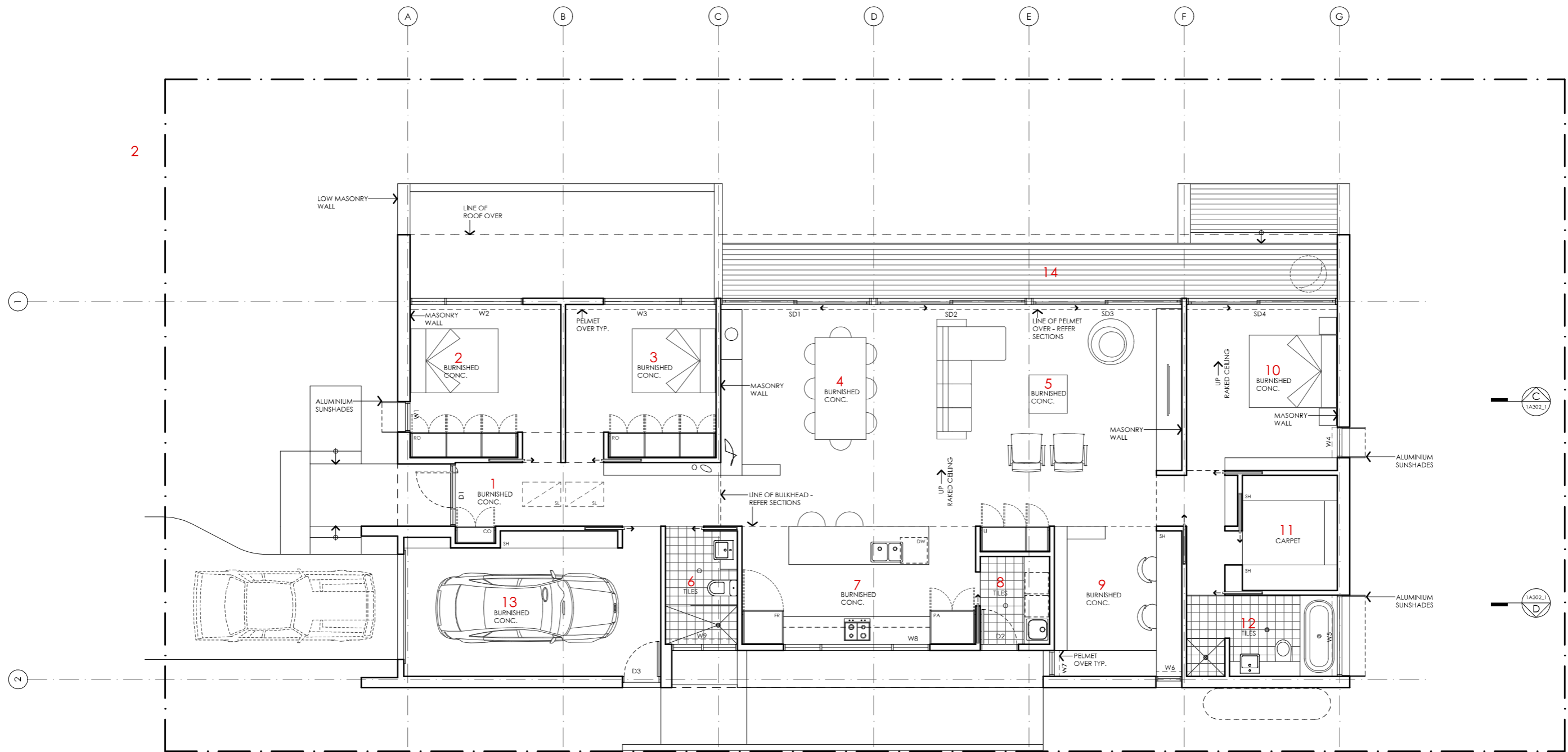
TOTAL GFA 194 m²

GROUND FLOOR DECKS 30 m²
 INDICATIVE BLOCK SIZE 544 m²

NOTE: GFA CALCULATIONS DO NOT INCLUDE DECKS, CARPORTS, COURTYARDS, VERANDAHS OR NIB WALLS

BANKSIA HOUSE

LEGEND N/A	PROJECT  Australian Government	 YourHome <small>Australia's guide to environmentally sustainable homes</small>	 Design For Place	DESIGN Banksia House	DETAILS Drawing title: Site Plan Scale: 1:200 Paper size: A3
	DISCLAIMER <p>This house plan is a guide only. It does not constitute legal or other professional advice. You should seek legal or other professional advice in relation to your specific circumstances before adopting any recommendation made within it e.g. advice on structural engineering or building certification requirements. The Commonwealth does not accept responsibility for the accuracy or completeness of this plan, its fitness for a particular purpose, or compliance with any regulatory requirements and standards. Further, the Commonwealth also disclaims liability, to the extent permitted by law, for any liabilities, losses, damages and costs arising from any reliance on the contents of this plan.</p>	DESIGNED FOR Hobart <p>Technical drawings should be read with the Banksia House Hobart 'Design Options' document which includes building specifications and rating information.</p>	Drawing number: 1/13 Date issued: March 2020 Project stage: Preliminary		



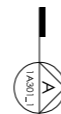
KEY

- 1 ENTRY
- 2 BEDROOM 3
- 3 BEDROOM 2
- 4 DINING
- 5 LIVING
- 6 BATHROOM
- 7 KITCHEN
- 8 LAUNDRY
- 9 STUDY
- 10 BEDROOM 1
- 11 WALK IN ROBE
- 12 ENSUITE
- 13 GARAGE
- 14 DECK

AREA

GROUND FLOOR LIVING	172 m ²
GARAGE	22 m ²
TOTAL GFA	194 m²
GROUND FLOOR DECKS	30 m ²
INDICATIVE BLOCK SIZE	544 m ²

NOTE: GFA CALCULATIONS DO NOT INCLUDE DECKS, CARPORTS, COURTYARDS, VERANDAHS OR NIB WALLS



BANKSIA HOUSE

LEGEND
N/A

PROJECT



DESIGN

Banksia House

DESIGNED FOR
Hobart

Technical drawings should be read with the Banksia House Hobart 'Design Options' document which includes building specifications and rating information.

DETAILS

Drawing title: Floor Plan

Scale: 1:100

Paper size: A3

Drawing number: 2/13

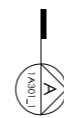
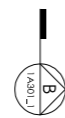
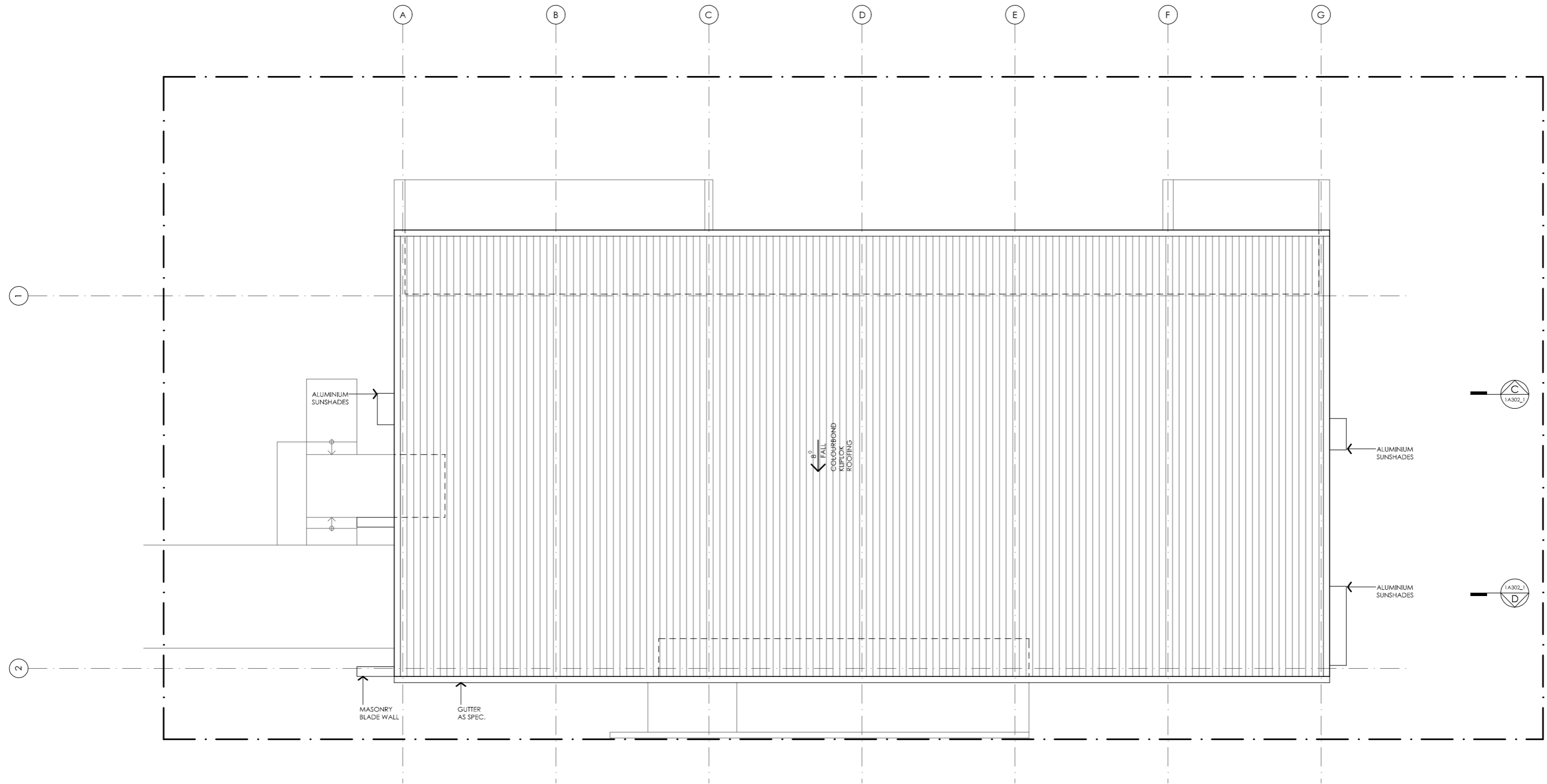
Date issued: March 2020

Project stage: Preliminary






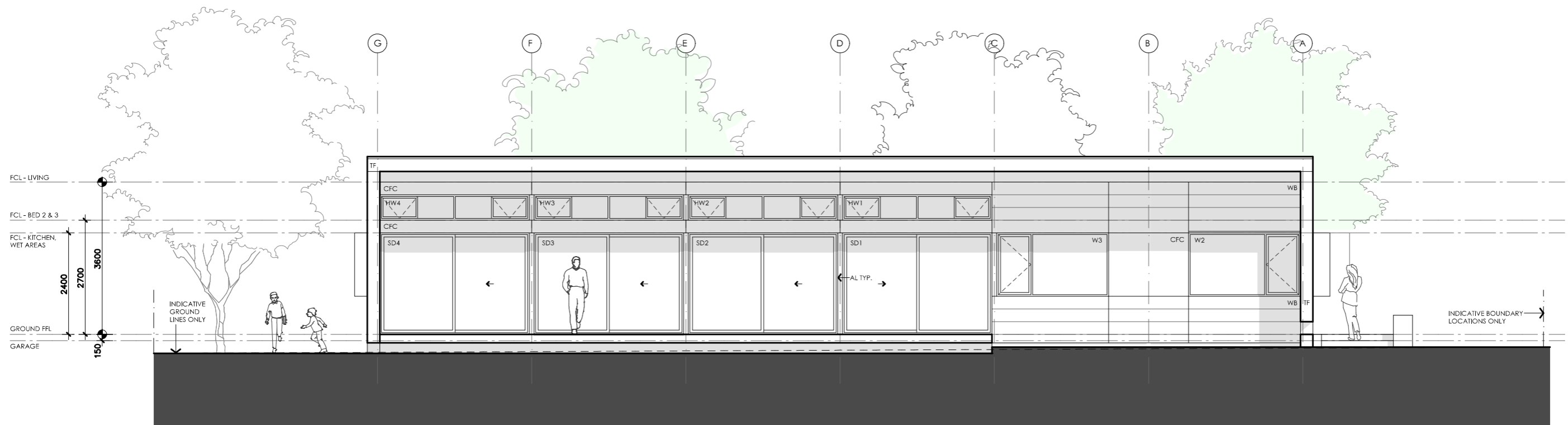
DISCLAIMER

This house plan is a guide only. It does not constitute legal or other professional advice. You should seek legal or other professional advice in relation to your specific circumstances before adopting any recommendation made within it e.g. advice on structural engineering or building certification requirements. The Commonwealth does not accept responsibility for the accuracy or completeness of this plan, its fitness for a particular purpose, or compliance with any regulatory requirements and standards. Further, the Commonwealth also disclaims liability, to the extent permitted by law, for any liabilities, losses, damages and costs arising from any reliance on the contents of this plan.



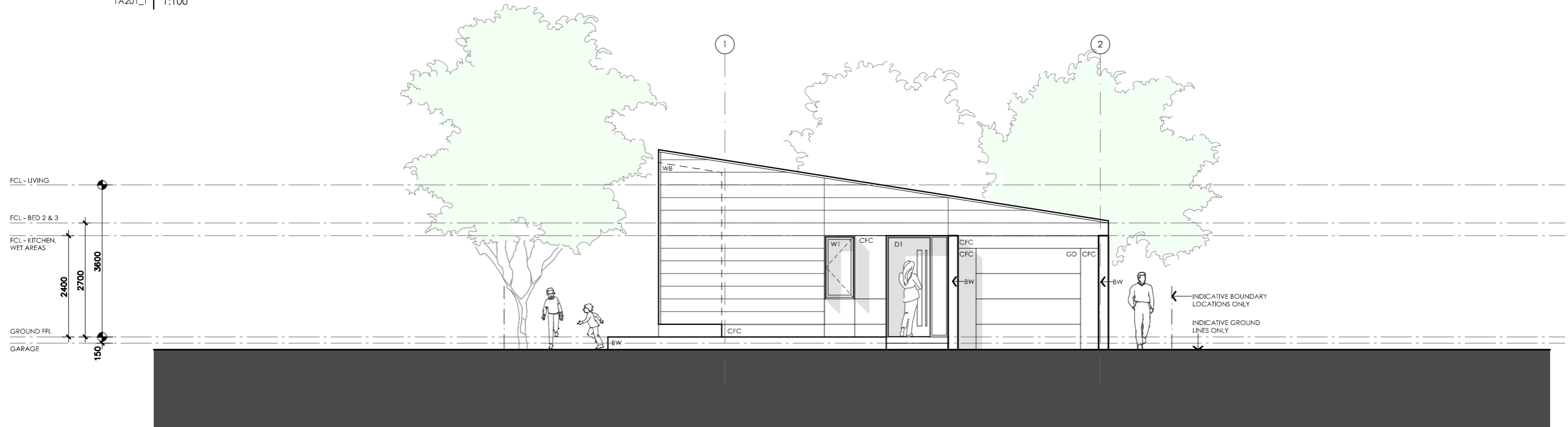
BANKSIA HOUSE

LEGEND N/A	PROJECT  Australian Government	 YourHome Australia's guide to environmentally sustainable homes	 Design For Place	DESIGN Banksia House	DETAILS Drawing title: Roof Plan Scale: 1:100 Paper size: A3 Drawing number: 3/13 Date issued: March 2020 Project stage: Preliminary
	DISCLAIMER This house plan is a guide only. It does not constitute legal or other professional advice. You should seek legal or other professional advice in relation to your specific circumstances before adopting any recommendation made within it e.g. advice on structural engineering or building certification requirements. The Commonwealth does not accept responsibility for the accuracy or completeness of this plan, its fitness for a particular purpose, or compliance with any regulatory requirements and standards. Further, the Commonwealth also disclaims liability, to the extent permitted by law, for any liabilities, losses, damages and costs arising from any reliance on the contents of this plan.			DESIGNED FOR Hobart Technical drawings should be read with the Banksia House Hobart 'Design Options' document which includes building specifications and rating information.	



01 NORTH ELEVATION

1A201_1 1:100



02 WEST ELEVATION

1A201_1 1:100

BANKSIA HOUSE

LEGEND

TF	TIMBER FASCIA PROFILE/COLOUR AS SPEC
WB	WEATHERBOARD LINING ON TIMBER FRAMING & BATTENS PROFILE/COLOUR AS SPEC
BW	FACE BRICK WORK BRICK AS SPEC
CFC	COMPRESSED FC CLADDING ON TIMBER FRAMING & BATTENS PROFILE/COLOUR AS SPEC
SB	STEEL BEAM PAINT FINISH AS SPEC.
GD	GARAGE DOOR MAKE & COLOUR AS SPEC
AL	ALUMINIUM COVER PANEL - FOLDED FINISH/COLOUR TO MATCH WINDOW FRAMES

PROJECT



DISCLAIMER

This house plan is a guide only. It does not constitute legal or other professional advice. You should seek legal or other professional advice in relation to your specific circumstances before adopting any recommendation made within it e.g. advice on structural engineering or building certification requirements. The Commonwealth does not accept responsibility for the accuracy or completeness of this plan, its fitness for a particular purpose, or compliance with any regulatory requirements and standards. Further, the Commonwealth also disclaims liability, to the extent permitted by law, for any liabilities, losses, damages and costs arising from any reliance on the contents of this plan.

DESIGN

Banksia House

DESIGNED FOR

Hobart

Technical drawings should be read with the Banksia House Hobart 'Design Options' document which includes building specifications and rating information.

DETAILS

Drawing title: Elevations

Scale: 1:100

Paper size: A3

Drawing number: 4/13

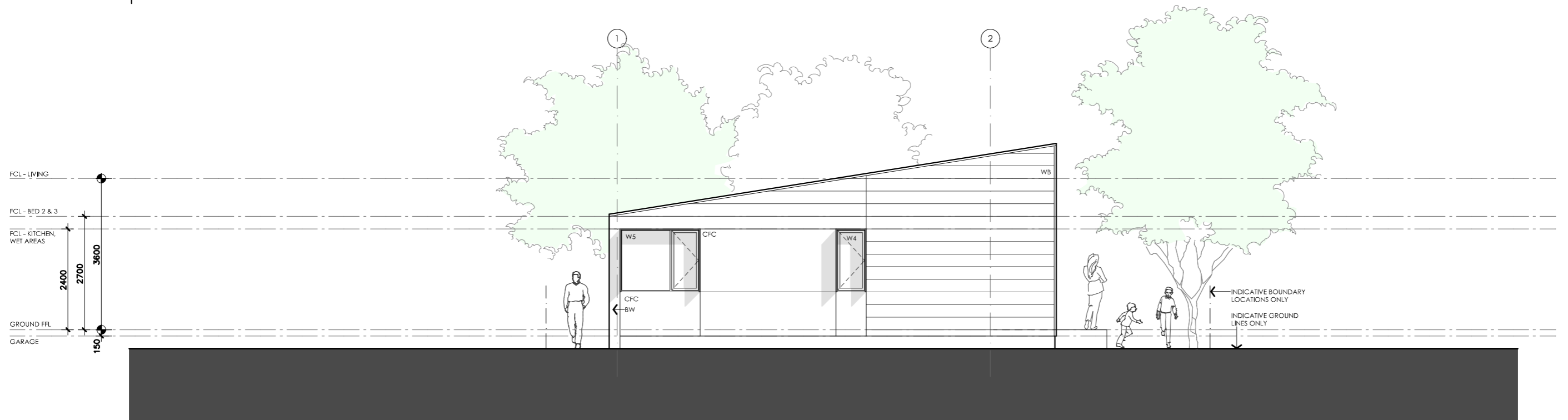
Date issued: March 2020

Project stage: Preliminary



01 | SOUTH ELEVATION

1A202_1 | 1:100



02 | EAST ELEVATION

1A202_1 | 1:100

BANKSIA HOUSE

LEGEND

TF	TIMBER FASCIA PROFILE/COLOUR AS SPEC
WB	WEATHERBOARD LINING ON TIMBER FRAMING & BATTENS PROFILE/COLOUR AS SPEC
BW	FACE BRICK WORK BRICK AS SPEC
CFC	COMPRESSED FC CLADDING ON TIMBER FRAMING & BATTENS PROFILE/COLOUR AS SPEC
SB	STEEL BEAM PAINT FINISH AS SPEC.
GD	GARAGE DOOR MAKE & COLOUR AS SPEC
AL	ALUMINIUM COVER PANEL - FOLDED FINISH/COLOUR TO MATCH WINDOW FRAMES

PROJECT



DISCLAIMER

This house plan is a guide only. It does not constitute legal or other professional advice. You should seek legal or other professional advice in relation to your specific circumstances before adopting any recommendation made within it e.g. advice on structural engineering or building certification requirements. The Commonwealth does not accept responsibility for the accuracy or completeness of this plan, its fitness for a particular purpose, or compliance with any regulatory requirements and standards. Further, the Commonwealth also disclaims liability, to the extent permitted by law, for any liabilities, losses, damages and costs arising from any reliance on the contents of this plan.

DESIGN

Banksia House

DESIGNED FOR

Hobart

Technical drawings should be read with the Banksia House Hobart 'Design Options' document which includes building specifications and rating information.

DETAILS

Drawing title: Elevations

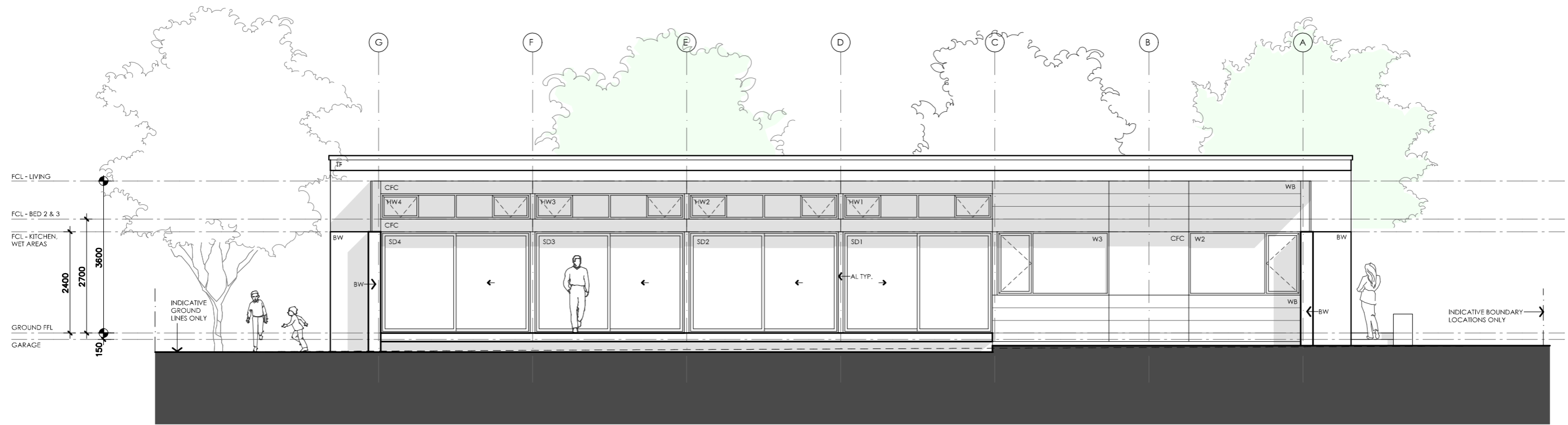
Scale: 1:100

Paper size: A3

Drawing number: 5/13

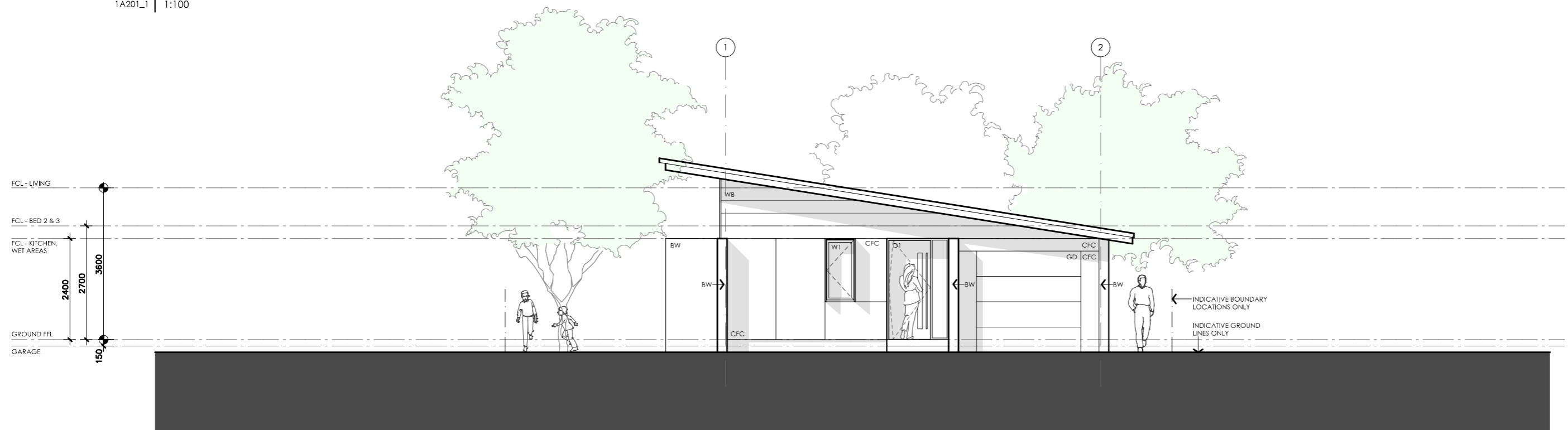
Date issued: March 2020

Project stage: Preliminary



01 NORTH ELEVATION

1A201_1 1:100



02 WEST ELEVATION

1A201_1 1:100

BANKSIA HOUSE

LEGEND

TF	TIMBER FASCIA PROFILE/COLOUR AS SPEC
WB	WEATHERBOARD LINING ON TIMBER FRAMING & BATTENS PROFILE/COLOUR AS SPEC
BW	FACE BRICK WORK BRICK AS SPEC
CFC	COMPRESSED FC CLADDING ON TIMBER FRAMING & BATTENS PROFILE/COLOUR AS SPEC
SB	STEEL BEAM PAINT FINISH AS SPEC.
GD	GARAGE DOOR MAKE & COLOUR AS SPEC
AL	ALUMINIUM COVER PANEL - FOLDED FINISH/COLOUR TO MATCH WINDOW FRAMES

PROJECT



DISCLAIMER

This house plan is a guide only. It does not constitute legal or other professional advice. You should seek legal or other professional advice in relation to your specific circumstances before adopting any recommendation made within it e.g. advice on structural engineering or building certification requirements. The Commonwealth does not accept responsibility for the accuracy or completeness of this plan, its fitness for a particular purpose, or compliance with any regulatory requirements and standards. Further, the Commonwealth also disclaims liability, to the extent permitted by law, for any liabilities, losses, damages and costs arising from any reliance on the contents of this plan.

DESIGN

Banksia House

DESIGNED FOR

Hobart

Technical drawings should be read with the Banksia House Hobart 'Design Options' document which includes building specifications and rating information.

DETAILS

Drawing title: Elevations - alt. roof line

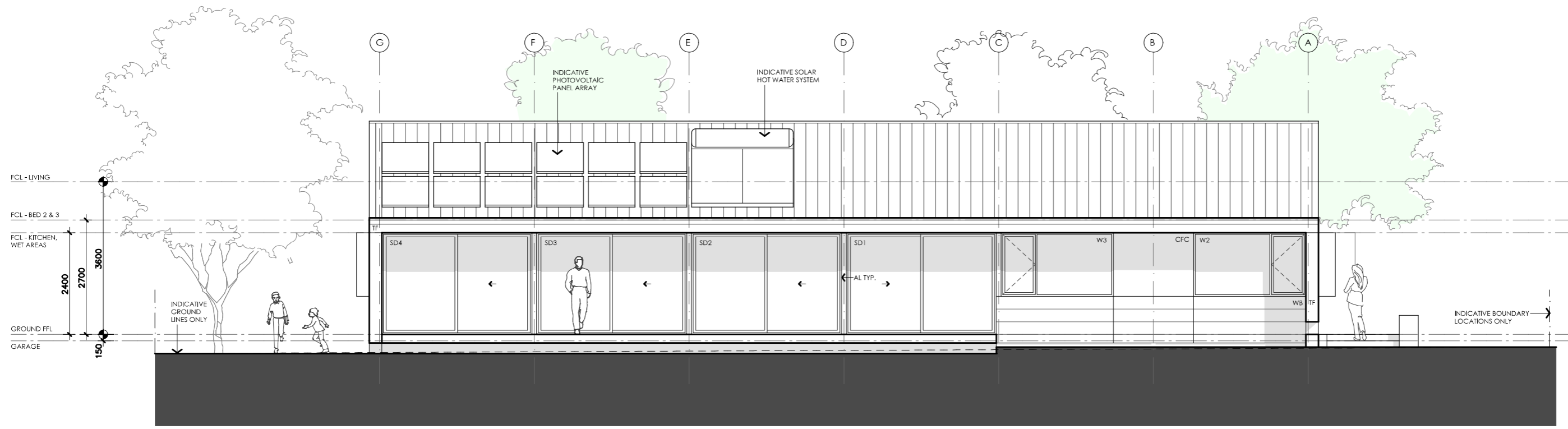
Scale: 1:100

Paper size: A3

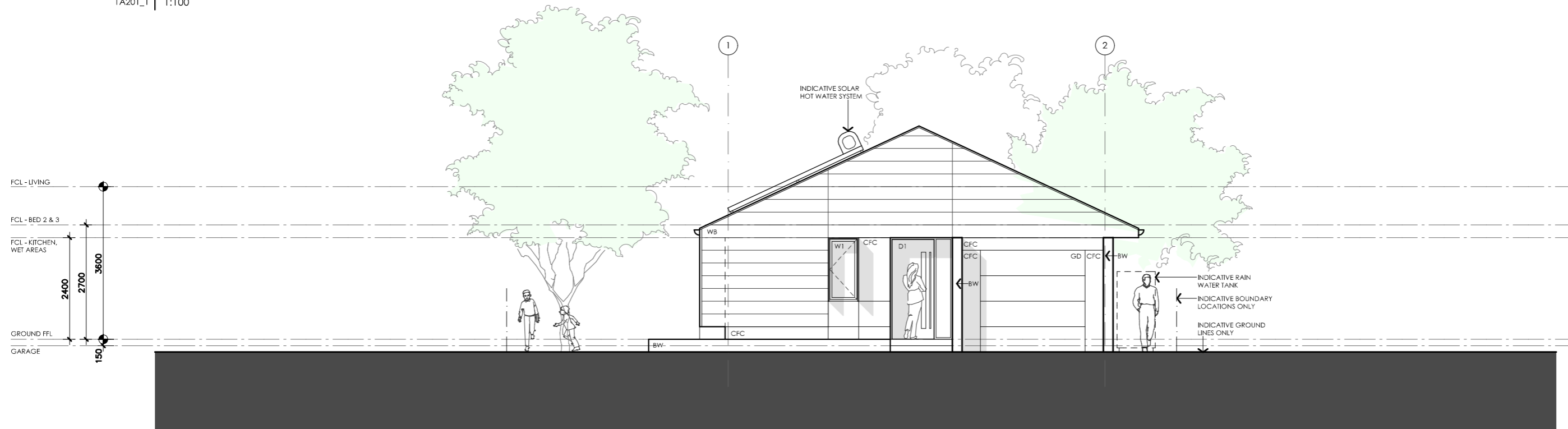
Drawing number: 6/13

Date issued: March 2020

Project stage: Preliminary




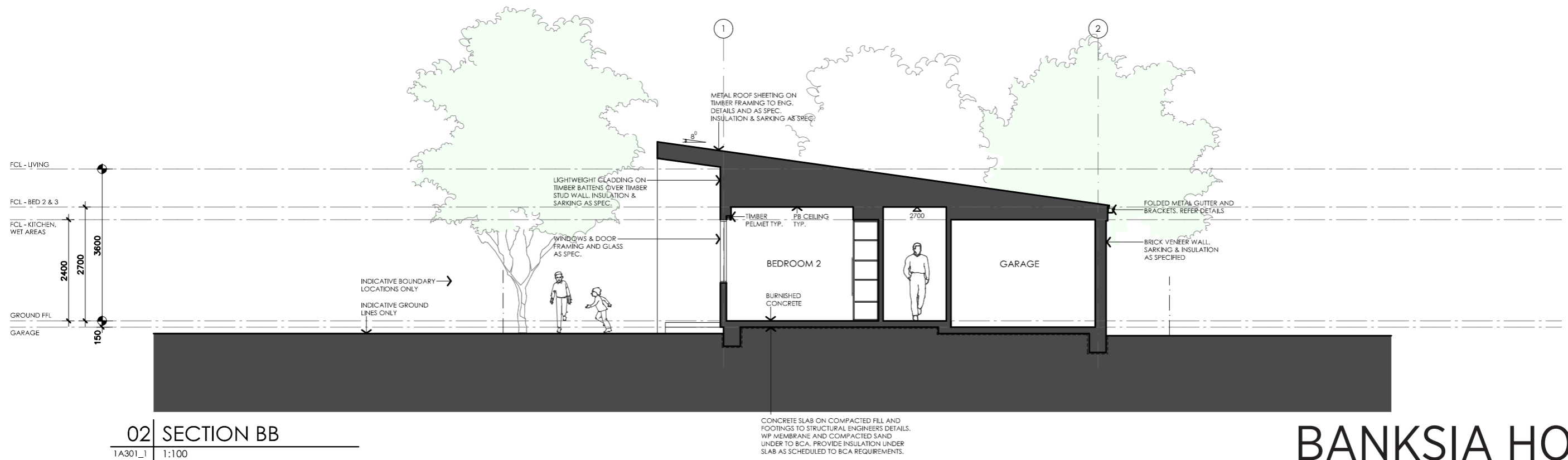
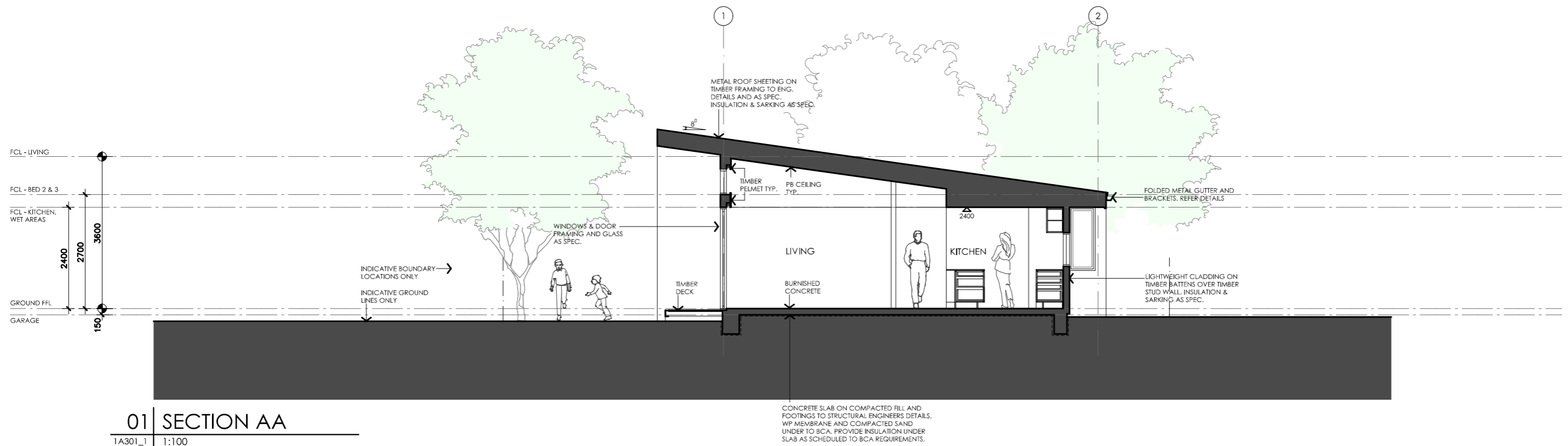
01 NORTH ELEVATION
1A201_1 1:100



02 WEST ELEVATION
1A201_1 1:100

BANKSIA HOUSE

<p>LEGEND</p> <p>TF TIMBER FASCIA PROFILE/COLOUR AS SPEC</p> <p>WB WEATHERBOARD LINING ON TIMBER FRAMING & BATTENS PROFILE/COLOUR AS SPEC</p> <p>BW FACE BRICK WORK BRICK AS SPEC</p> <p>CFC COMPRESSED FC CLADDING ON TIMBER FRAMING & BATTENS PROFILE/COLOUR AS SPEC</p> <p>SB STEEL BEAM PAINT FINISH AS SPEC.</p> <p>GD GARAGE DOOR MAKE & COLOUR AS SPEC</p> <p>AL ALUMINIUM COVER PANEL - FOLDED FINISH/COLOUR TO MATCH WINDOW FRAMES</p>	<p>PROJECT</p>    <p>DISCLAIMER</p> <p>This house plan is a guide only. It does not constitute legal or other professional advice. You should seek legal or other professional advice in relation to your specific circumstances before adopting any recommendation made within it e.g. advice on structural engineering or building certification requirements. The Commonwealth does not accept responsibility for the accuracy or completeness of this plan, its fitness for a particular purpose, or compliance with any regulatory requirements and standards. Further, the Commonwealth also disclaims liability, to the extent permitted by law, for any liabilities, losses, damages and costs arising from any reliance on the contents of this plan.</p>	<p>DESIGN Banksia House</p> <p>DESIGNED FOR Hobart</p> <p>Technical drawings should be read with the Banksia House Hobart 'Design Options' document which includes building specifications and rating information.</p>	<p>DETAILS</p> <p>Drawing title: Elevations - alt. roof line</p> <p>Scale: 1:100</p> <p>Paper size: A3</p> <p>Drawing number: 7/13</p> <p>Date issued: March 2020</p> <p>Project stage: Preliminary</p>
--	---	--	--



BANKSIA HOUSE

LEGEND	
TF	TIMBER FASCIA PROFILE/COLOUR AS SPEC
WB	WEATHERBOARD LINING ON TIMBER FRAMING & BATTENS PROFILE/COLOUR AS SPEC
BW	FACE BRICK WORK BRICK AS SPEC
CFC	COMPRESSED FC CLADDING ON TIMBER FRAMING & BATTENS PROFILE/COLOUR AS SPEC
SB	STEEL BEAM PAINT FINISH AS SPEC.
GD	GARAGE DOOR MAKE & COLOUR AS SPEC
AL	ALUMINIUM COVER PANEL - FOLDED FINISH/COLOUR TO MATCH WINDOW FRAMES

PROJECT



Australian Government



YourHome
Australia's guide to environmentally sustainable homes



Design For Place

DISCLAIMER

This house plan is a guide only. It does not constitute legal or other professional advice. You should seek legal or other professional advice in relation to your specific circumstances before adopting any recommendation made within it e.g. advice on structural engineering or building certification requirements. The Commonwealth does not accept responsibility for the accuracy or completeness of this plan, its fitness for a particular purpose, or compliance with any regulatory requirements and standards. Further, the Commonwealth also disclaims liability, to the extent permitted by law, for any liabilities, losses, damages and costs arising from any reliance on the contents of this plan.

DESIGN
Banksia House

DESIGNED FOR
Hobart

Technical drawings should be read with the Banksia House Hobart 'Design Options' document which includes building specifications and rating information.

DETAILS

Drawing title: Sections

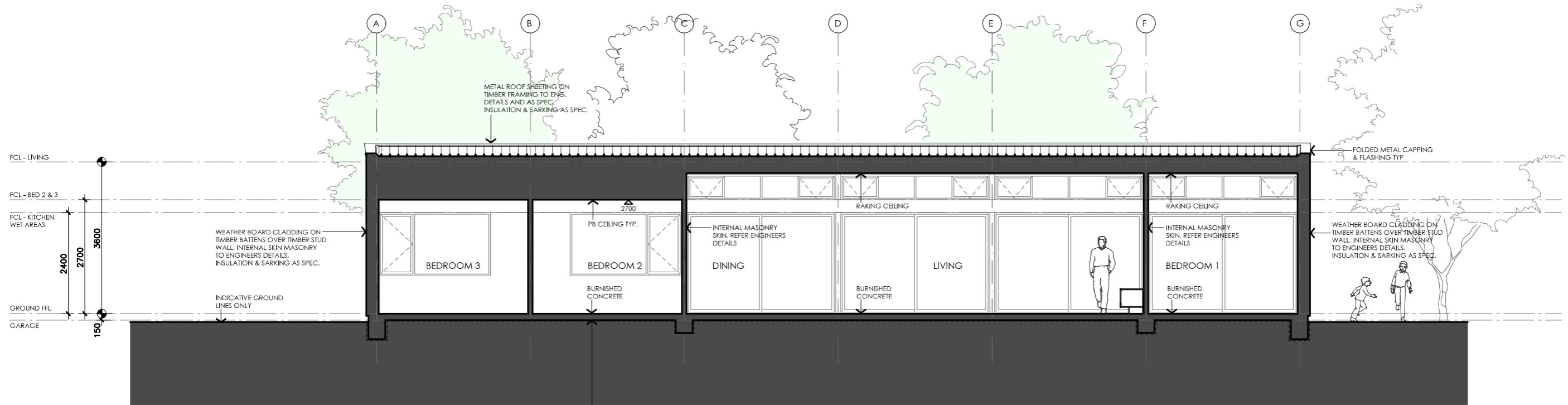
Scale: 1:100

Paper size: A3

Drawing number: 8/13

Date issued: March 2020

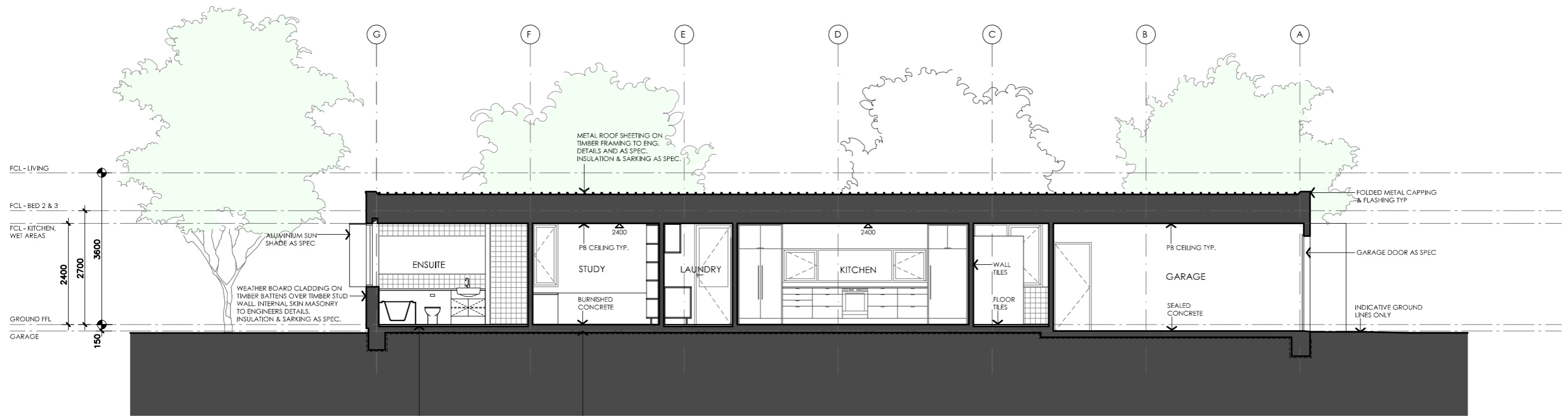
Project stage: Preliminary



01 | SECTION CC

1A302_1 | 1:100

CONCRETE SLAB ON COMPACTED FILL AND FOOTINGS TO STRUCTURAL ENGINEERS DETAILS. WP MEMBRANE AND COMPACTED SAND UNDER TO BCA. PROVIDE INSULATION UNDER SLAB AS SCHEDULED TO BCA REQUIREMENTS.



02 | SECTION DD

1A302_1 | 1:100

CONCRETE SLAB ON COMPACTED FILL AND FOOTINGS TO STRUCTURAL ENGINEERS DETAILS. WP MEMBRANE AND COMPACTED SAND UNDER TO BCA. PROVIDE INSULATION UNDER SLAB AS SCHEDULED TO BCA REQUIREMENTS.

BANKSIA HOUSE

LEGEND	
TF	TIMBER FASCIA PROFILE/COLOUR AS SPEC
WB	WEATHERBOARD LINING ON TIMBER FRAMING & BATTENS PROFILE/COLOUR AS SPEC
BW	FACE BRICK WORK BRICK AS SPEC
CFC	COMPRESSED FC CLADDING ON TIMBER FRAMING & BATTENS PROFILE/COLOUR AS SPEC
SB	STEEL BEAM PAINT FINISH AS SPEC.
GD	GARAGE DOOR MAKE & COLOUR AS SPEC
AL	ALUMINIUM COVER PANEL - FOLDED FINISH/COLOUR TO MATCH WINDOW FRAMES

PROJECT



Australian Government



YourHome
Australia's guide to environmentally sustainable homes



Design For Place

DISCLAIMER

This house plan is a guide only. It does not constitute legal or other professional advice. You should seek legal or other professional advice in relation to your specific circumstances before adopting any recommendation made within it e.g. advice on structural engineering or building certification requirements. The Commonwealth does not accept responsibility for the accuracy or completeness of this plan, its fitness for a particular purpose, or compliance with any regulatory requirements and standards. Further, the Commonwealth also disclaims liability, to the extent permitted by law, for any liabilities, losses, damages and costs arising from any reliance on the contents of this plan.

DESIGN
Banksia House

DESIGNED FOR
Hobart

Technical drawings should be read with the Banksia House Hobart 'Design Options' document which includes building specifications and rating information.

DETAILS

Drawing title: Sections

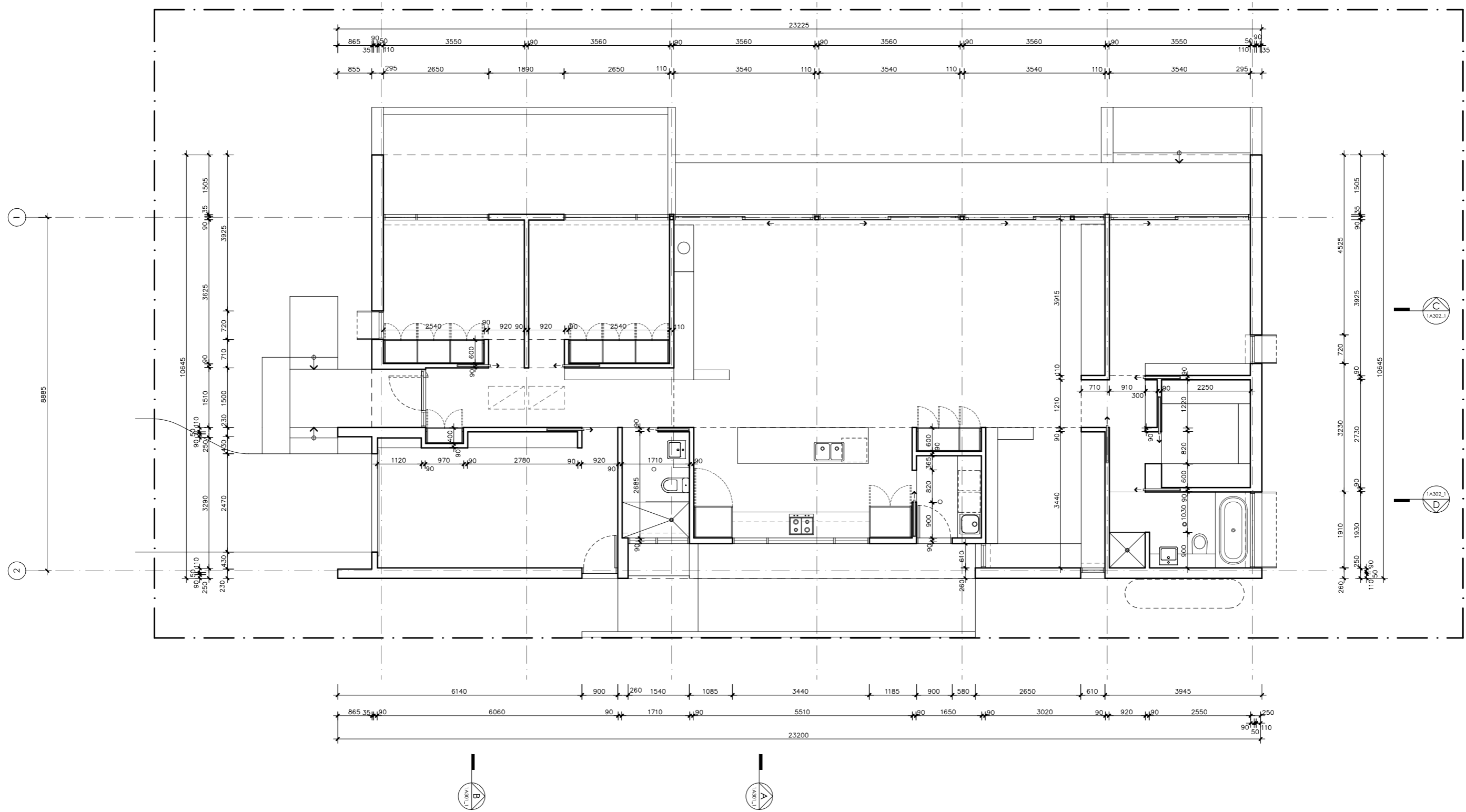
Scale: 1:100

Paper size: A3

Drawing number: 9/13

Date issued: March 2020

Project stage: Preliminary



BANKSIA HOUSE

LEGEND

N/A

PROJECT



DESIGN

Banksia House

DESIGNED FOR

Hobart

Technical drawings should be read with the Banksia House Hobart 'Design Options' document which includes building specifications and rating information.

DETAILS

Drawing title: Wall Setout Plan

Scale: 1:100

Paper size: A3

Drawing number: 10/13

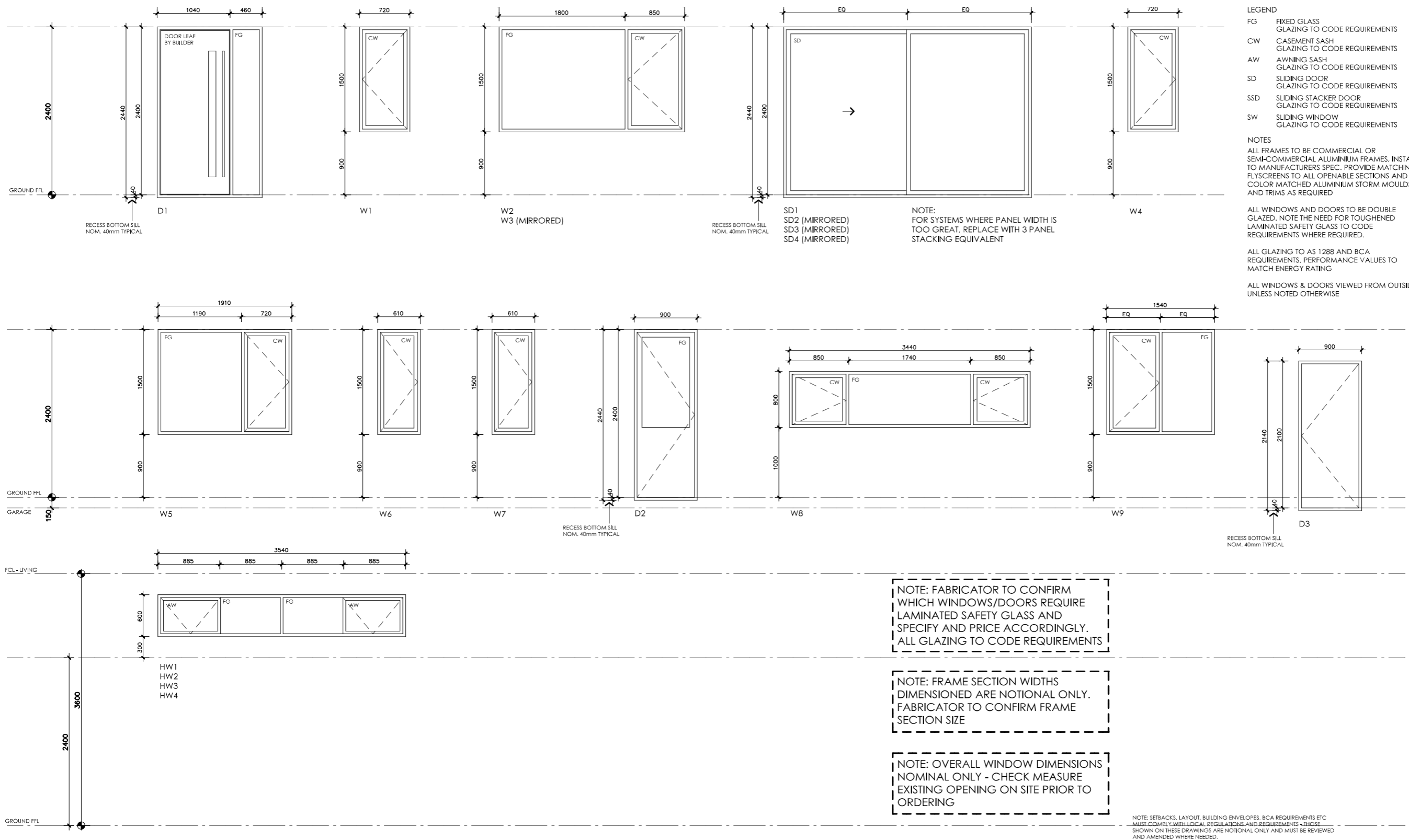
Date issued: March 2020

Project stage: Preliminary


DISCLAIMER

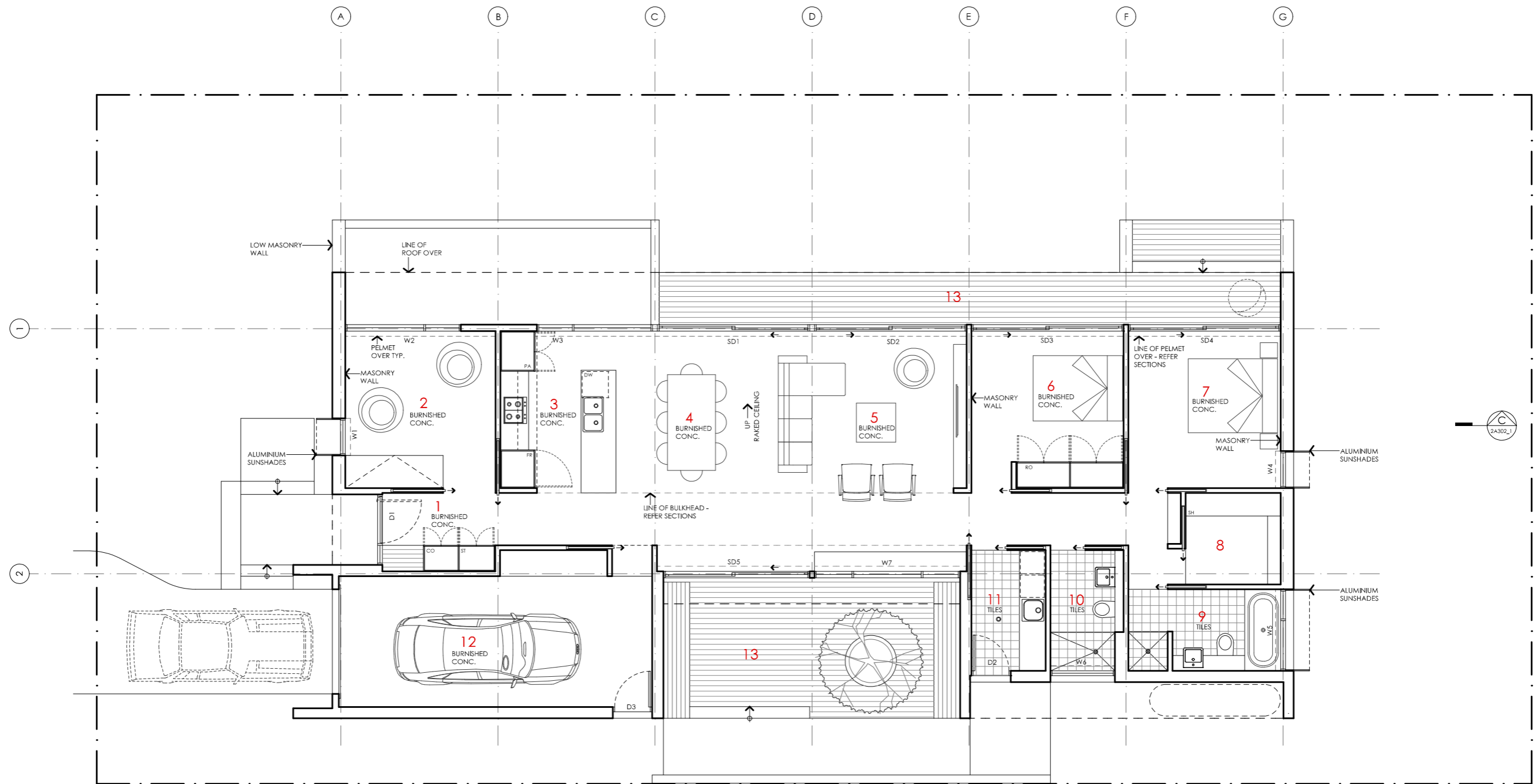
This house plan is a guide only. It does not constitute legal or other professional advice. You should seek legal or other professional advice in relation to your specific circumstances before adopting any recommendation made within it e.g. advice on structural engineering or building certification requirements. The Commonwealth does not accept responsibility for the accuracy or completeness of this plan, its fitness for a particular purpose, or compliance with any regulatory requirements and standards. Further, the Commonwealth also disclaims liability, to the extent permitted by law, for any liabilities, losses, damages and costs arising from any reliance on the contents of this plan.





BANKSIA HOUSE

<p>LEGEND N/A</p>	<p>PROJECT</p>    <p>DISCLAIMER</p> <p>This house plan is a guide only. It does not constitute legal or other professional advice. You should seek legal or other professional advice in relation to your specific circumstances before adopting any recommendation made within it e.g. advice on structural engineering or building certification requirements. The Commonwealth does not accept responsibility for the accuracy or completeness of this plan, its fitness for a particular purpose, or compliance with any regulatory requirements and standards. Further, the Commonwealth also disclaims liability, to the extent permitted by law, for any liabilities, losses, damages and costs arising from any reliance on the contents of this plan.</p>	<p>DESIGN Banksia House</p> <p>DESIGNED FOR Hobart</p> <p>Technical drawings should be read with the Banksia House Hobart 'Design Options' document which includes building specifications and rating information.</p>	<p>DETAILS</p> <p>Drawing title: Window Schedule</p> <p>Scale: 1:100</p> <p>Paper size: A3</p> <p>Drawing number: 11/13</p> <p>Date issued: March 2020</p> <p>Project stage: Preliminary</p>
------------------------------	---	--	---



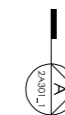
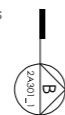
KEY

- 1 ENTRY
- 2 STUDY / BEDROOM 3
- 3 KITCHEN
- 4 DINING
- 5 LIVING
- 6 BEDROOM 2
- 7 BEDROOM 1
- 8 ROBE
- 9 ENSUITE
- 10 BATHROOM
- 11 LAUNDRY
- 12 GARAGE
- 13 DECK

AREA

GROUND FLOOR LIVING	141 m ²
GARAGE	28 m ²
TOTAL GFA	169 m²
GROUND FLOOR DECKS	35 m ²
INDICATIVE BLOCK SIZE	544 m ²

NOTE: GFA CALCULATIONS DO NOT INCLUDE DECKS, CARPORTS, COURTYARDS, VERANDAHS OR NIB WALLS



BANKSIA HOUSE

LEGEND

N/A

PROJECT



DESIGN

Banksia House

DESIGNED FOR

Hobart

Technical drawings should be read with the Banksia House Hobart 'Design Options' document which includes building specifications and rating information.

DETAILS

Drawing title: Alt Floor Plan - 2 Bedroom

Scale: 1:100

Paper size: A3

Drawing number: 12/13

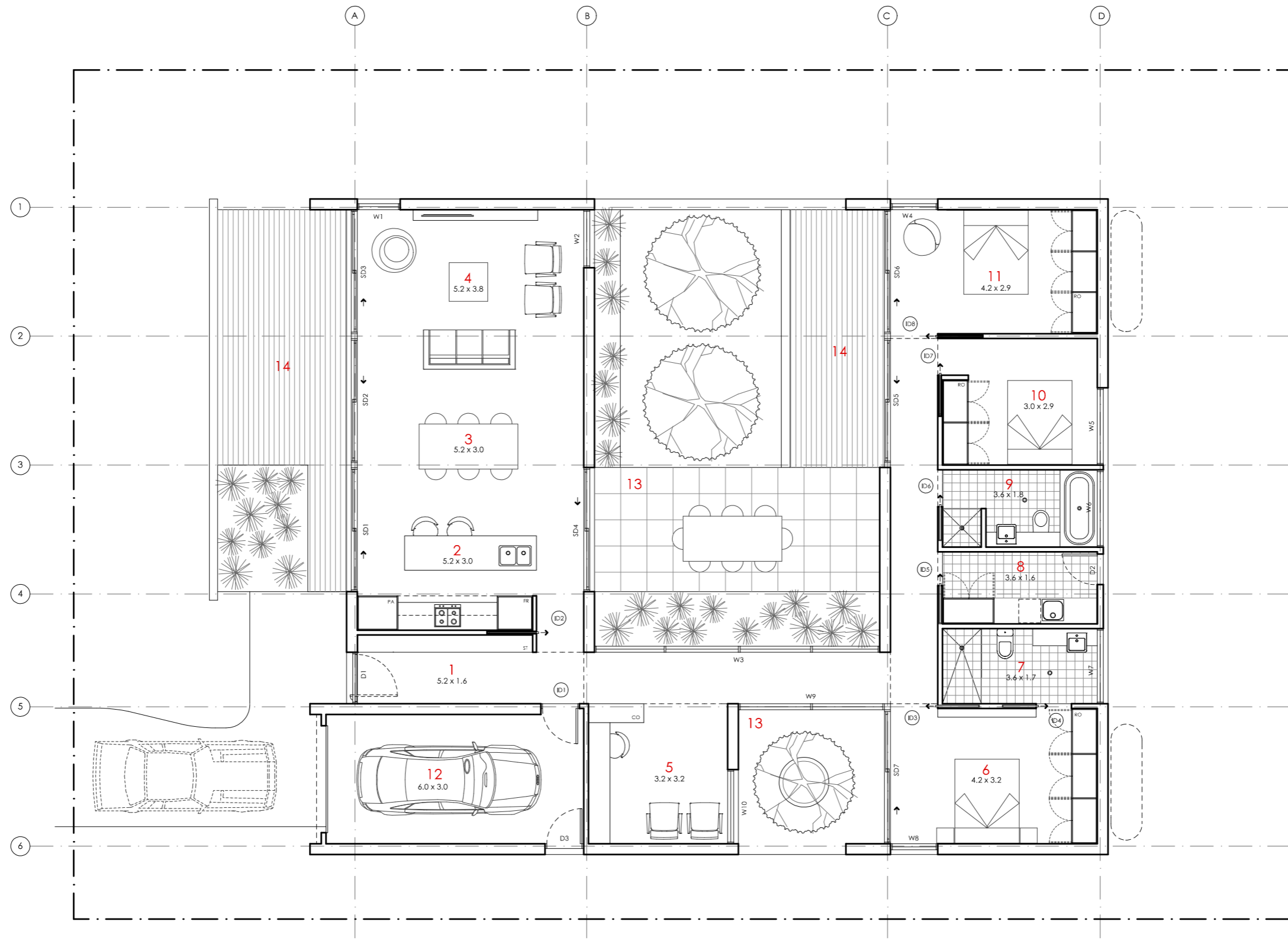
Date issued: March 2020

Project stage: Preliminary



DISCLAIMER

This house plan is a guide only. It does not constitute legal or other professional advice. You should seek legal or other professional advice in relation to your specific circumstances before adopting any recommendation made within it e.g. advice on structural engineering or building certification requirements. The Commonwealth does not accept responsibility for the accuracy or completeness of this plan, its fitness for a particular purpose, or compliance with any regulatory requirements and standards. Further, the Commonwealth also disclaims liability, to the extent permitted by law, for any liabilities, losses, damages and costs arising from any reliance on the contents of this plan.



- KEY**
- 1 ENTRY
 - 2 KITCHEN
 - 3 DINING
 - 4 LIVING
 - 5 STUDY
 - 6 BEDROOM 1
 - 7 ENSUITE
 - 8 LAUNDRY
 - 9 BATHROOM
 - 10 BEDROOM 2
 - 11 BEDROOM 3
 - 12 GARAGE
 - 13 COURTYARD
 - 14 DECK

AREA

GROUND FLOOR LIVING 167 m²
 GARAGE 22 m²
TOTAL GFA 189 m²
 GROUND FLOOR DECKS 25 m²

INDICATIVE BLOCK SIZE 560 m²

NOTE: GFA CALCULATIONS DO NOT INCLUDE DECKS, CARPORTS, COURTYARDS, VERANDAH'S

BANKSIA HOUSE

LEGEND

N/A

PROJECT



DESIGN

Banksia House

DESIGNED FOR

Hobart

Technical drawings should be read with the Banksia House Hobart 'Design Options' document which includes building specifications and rating information.

DETAILS

Drawing title: Alt Floor Plan - Courtyard

Scale: 1:100

Paper size: A3

Drawing number: 13/13

Date issued: March 2020

Project stage: Preliminary



DISCLAIMER

This house plan is a guide only. It does not constitute legal or other professional advice. You should seek legal or other professional advice in relation to your specific circumstances before adopting any recommendation made within it e.g. advice on structural engineering or building certification requirements. The Commonwealth does not accept responsibility for the accuracy or completeness of this plan, its fitness for a particular purpose, or compliance with any regulatory requirements and standards. Further, the Commonwealth also disclaims liability, to the extent permitted by law, for any liabilities, losses, damages and costs arising from any reliance on the contents of this plan.