



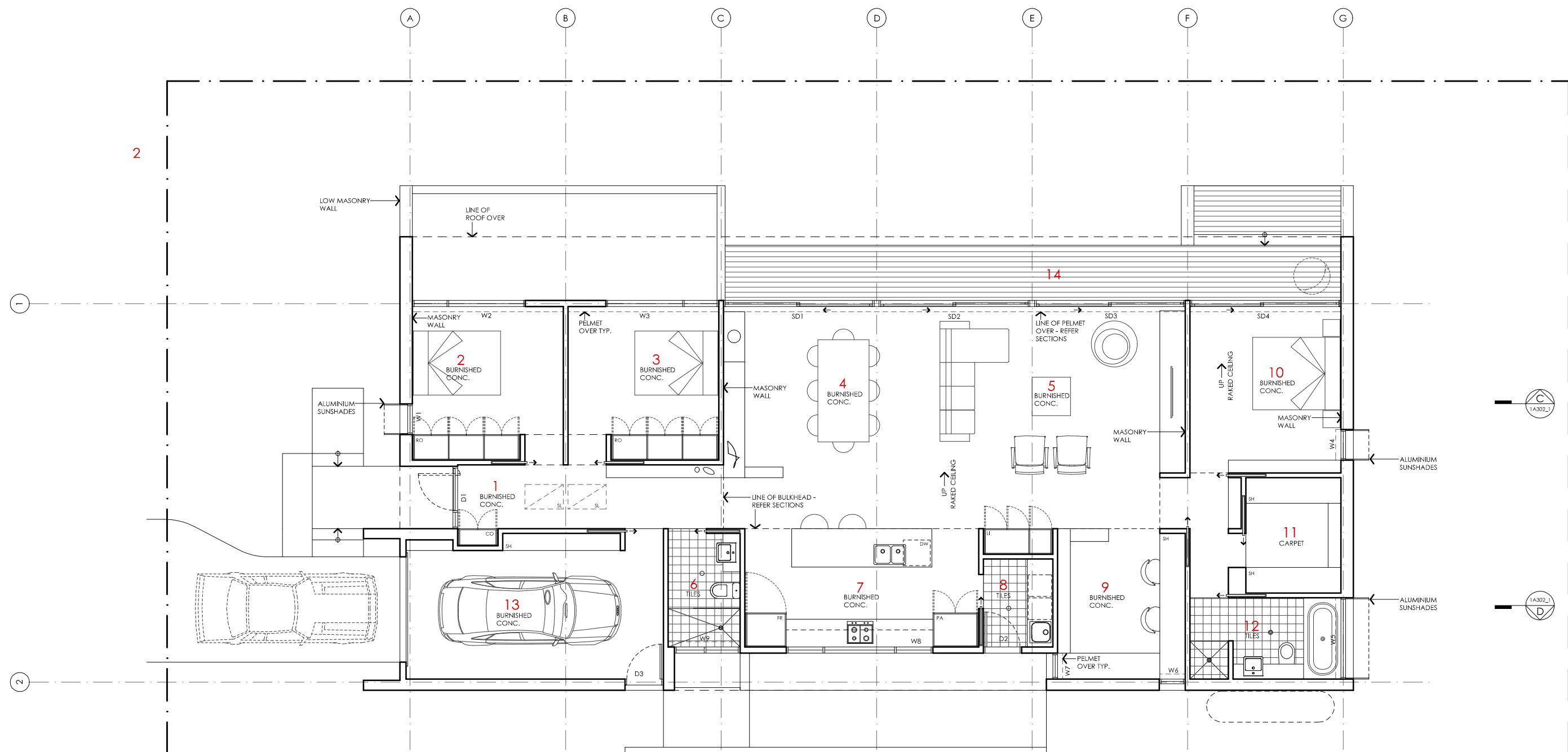


AREA  
GROUND FLOOR LIVING 172 m<sup>2</sup>  
GARAGE 22 m<sup>2</sup>  
TOTAL GFA 194 m<sup>2</sup>  
GROUND FLOOR DECKS 30 m<sup>2</sup>  
INDICATIVE BLOCK SIZE 544 m<sup>2</sup>  
  
NOTE: GFA CALCULATIONS DO NOT  
INCLUDE DECKS, CARPORTS,  
COURTYARDS, VERANDAHS OR NIB WALLS

# BANKSIA HOUSE

|               |   |  |  |   |
|---------------|---|--|--|---|
| LEGEND<br>N/A | PROJECT<br><div> Australian Government</div> <div> YourHome<br/>Australia's guide to environmentally sustainable homes</div> <div> Design For Place</div>  |  | DESIGN<br>Banksia House  | DETAILS   |
|               | DISCLAIMER<br>This house plan is a guide only. It does not constitute legal or other professional advice. You should seek legal or other professional advice in relation to your specific circumstances before adopting any recommendation made within it e.g. advice on structural engineering or building certification requirements. The Commonwealth does not accept responsibility for the accuracy or completeness of this plan, its fitness for a particular purpose, or compliance with any regulatory requirements and standards. Further, the Commonwealth also disclaims liability, to the extent permitted by law, for any liabilities, losses, damages and costs arising from any reliance on the contents of this plan. |  | DESIGNED FOR<br>Canberra<br><br>Technical drawings should be read with the Banksia House Canberra 'Design Options' document which includes building specifications and rating information. | <div>Drawing title: Site Plan</div> <div>Scale: 1:200</div> <div>Paper size: A3</div> <div>Drawing number: 1/13</div> <div>Date issued: March 2020</div> <div>Project stage: Preliminary</div> <div></div> |



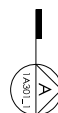
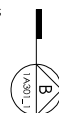
#### KEY

- 1 ENTRY
- 2 BEDROOM 3
- 3 BEDROOM 2
- 4 DINING
- 5 LIVING
- 6 BATHROOM
- 7 KITCHEN
- 8 LAUNDRY
- 9 STUDY
- 10 BEDROOM 1
- 11 WALK IN ROBE
- 12 ENSUITE
- 13 GARAGE
- 14 DECK

#### AREA

|                       |                          |
|-----------------------|--------------------------|
| GROUND FLOOR LIVING   | 172 m <sup>2</sup>       |
| GARAGE                | 22 m <sup>2</sup>        |
| <b>TOTAL GFA</b>      | <b>194 m<sup>2</sup></b> |
| GROUND FLOOR DECKS    | 30 m <sup>2</sup>        |
| INDICATIVE BLOCK SIZE | 544 m <sup>2</sup>       |

NOTE: GFA CALCULATIONS DO NOT INCLUDE DECKS, CARPORTS, COURTYARDS, VERANDAHS OR NIB WALLS



# BANKSIA HOUSE

#### LEGEND

N/A

#### PROJECT



#### DESIGN

**Banksia House**

#### DESIGNED FOR

**Canberra**

Technical drawings should be read with the Banksia House Canberra 'Design Options' document which includes building specifications and rating information.

#### DETAILS

**Drawing title:** Floor Plan

**Scale:** 1:100

**Paper size:** A3

**Drawing number:** 2/13

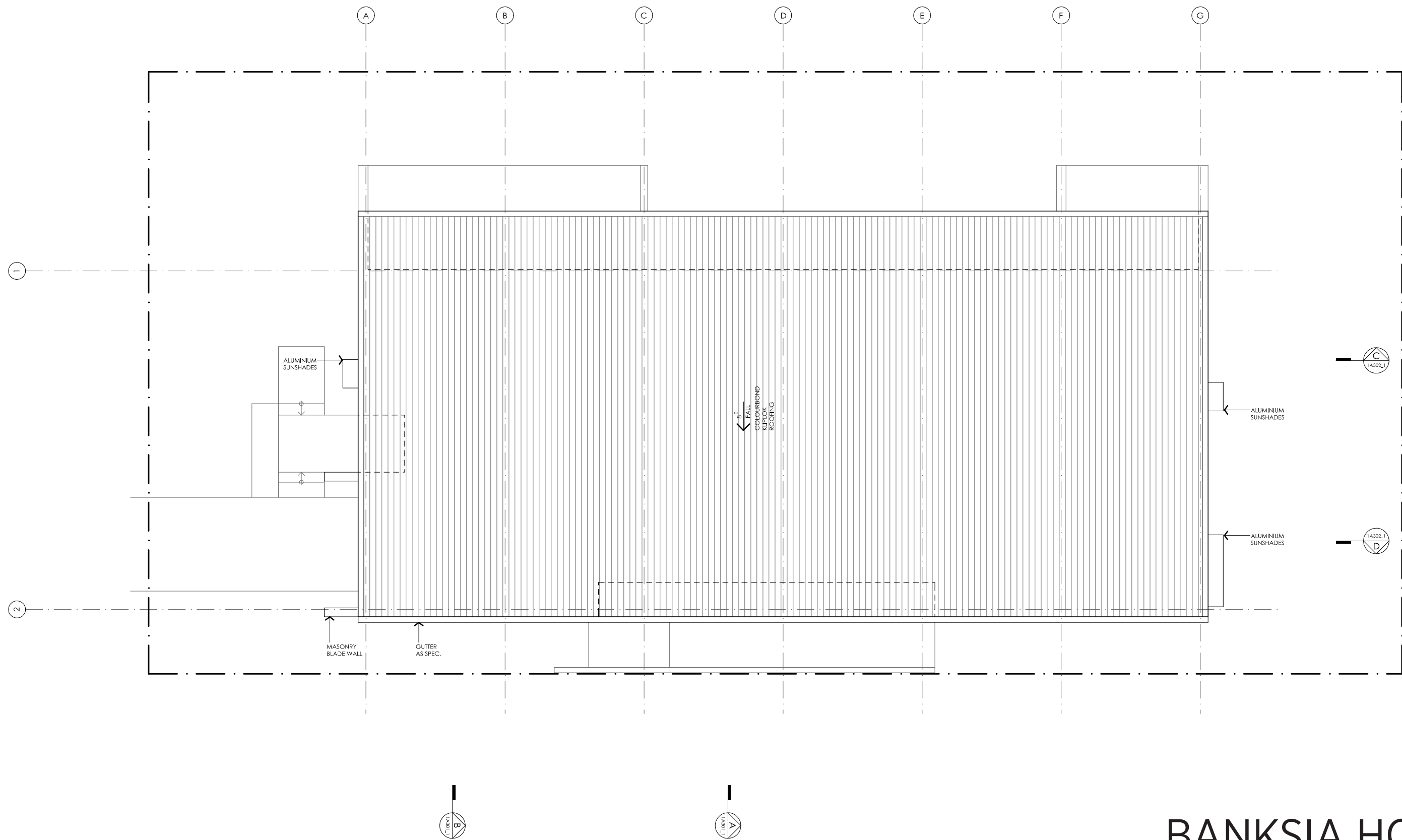
**Date issued:** March 2020

**Project stage:** Preliminary



#### DISCLAIMER

This house plan is a guide only. It does not constitute legal or other professional advice. You should seek legal or other professional advice in relation to your specific circumstances before adopting any recommendation made within it e.g. advice on structural engineering or building certification requirements. The Commonwealth does not accept responsibility for the accuracy or completeness of this plan, its fitness for a particular purpose, or compliance with any regulatory requirements and standards. Further, the Commonwealth also disclaims liability, to the extent permitted by law, for any liabilities, losses, damages and costs arising from any reliance on the contents of this plan.



# BANKSIA HOUSE

LEGEND  
N/A

PROJECT



DESIGN

**Banksia House**

**DESIGNED FOR  
Canberra**

Technical drawings should be read with the Banksia House Canberra 'Design Options' document which includes building specifications and rating information.

DETAILS

**Drawing title:** Roof Plan

**Scale:** 1:100

**Paper size:** A3

**Drawing number:** 3/13

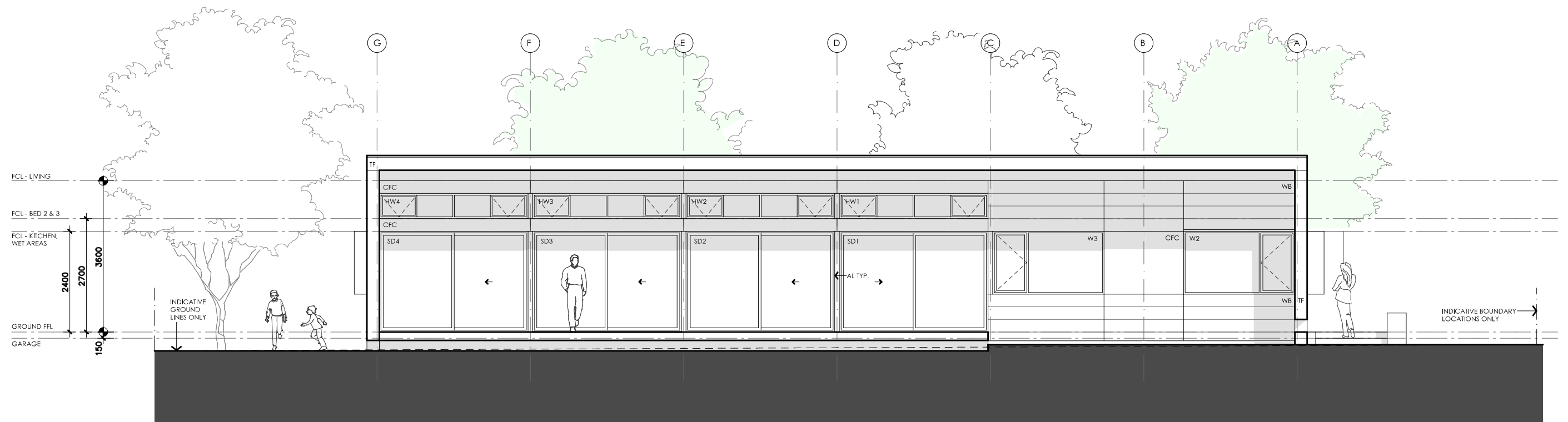
**Date issued:** March 2020

**Project stage:** Preliminary



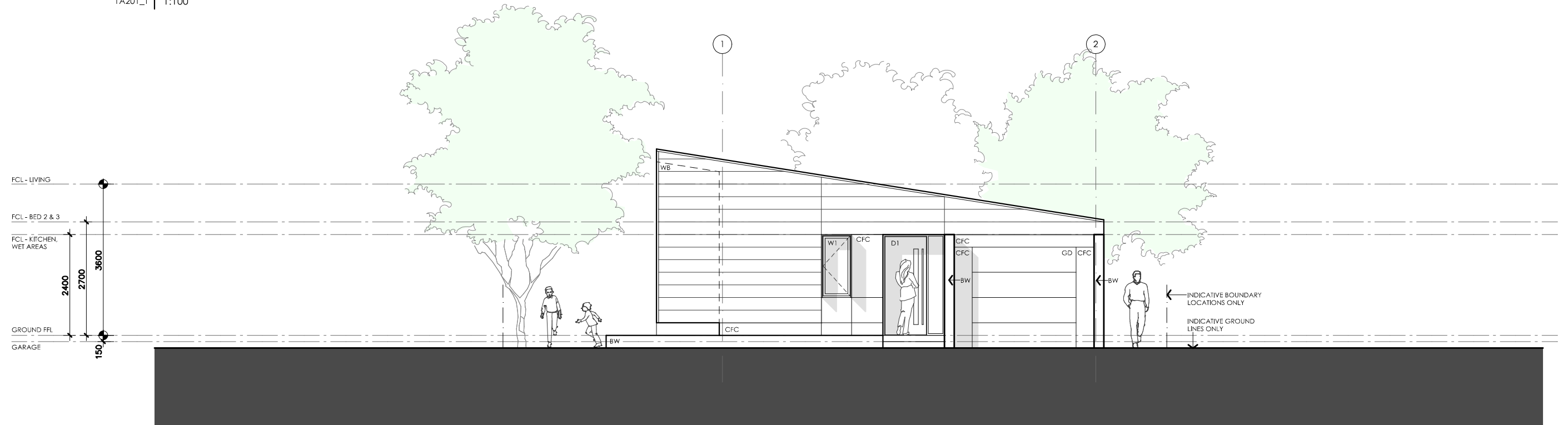
DISCLAIMER

This house plan is a guide only. It does not constitute legal or other professional advice. You should seek legal or other professional advice in relation to your specific circumstances before adopting any recommendation made within it e.g. advice on structural engineering or building certification requirements. The Commonwealth does not accept responsibility for the accuracy or completeness of this plan, its fitness for a particular purpose, or compliance with any regulatory requirements and standards. Further, the Commonwealth also disclaims liability, to the extent permitted by law, for any liabilities, losses, damages and costs arising from any reliance on the contents of this plan.



01 NORTH ELEVATION

1A201\_1 1:100



02 WEST ELEVATION

1A201\_1 1:100

# BANKSIA HOUSE

## LEGEND

|     |   |
|-----|---|
| TF  | TIMBER FASCIA<br>PROFILE/COLOUR AS SPEC   |
| WB  | WEATHERBOARD LINING ON TIMBER<br>FRAMING & BATTENS<br>PROFILE/COLOUR AS SPEC    |
| BW  | FACE BRICK WORK<br>BRICK AS SPEC  |
| CFC | COMPRESSED FC CLADDING ON TIMBER<br>FRAMING & BATTENS<br>PROFILE/COLOUR AS SPEC |
| SB  | STEEL BEAM<br>PAINT FINISH AS SPEC.   |
| GD  | GARAGE DOOR<br>MAKE & COLOUR AS SPEC  |
| AL  | ALUMINIUM COVER PANEL - FOLDED<br>FINISH/COLOUR TO MATCH WINDOW FRAMES          |

## PROJECT



Australian Government



Australia's guide to environmentally sustainable homes



Design For Place

## DISCLAIMER

This house plan is a guide only. It does not constitute legal or other professional advice. You should seek legal or other professional advice in relation to your specific circumstances before adopting any recommendation made within it e.g. advice on structural engineering or building certification requirements. The Commonwealth does not accept responsibility for the accuracy or completeness of this plan, its fitness for a particular purpose, or compliance with any regulatory requirements and standards. Further, the Commonwealth also disclaims liability, to the extent permitted by law, for any liabilities, losses, damages and costs arising from any reliance on the contents of this plan.

## DESIGN

**Banksia House**

**DESIGNED FOR**

**Canberra**

Technical drawings should be read with the Banksia House Canberra 'Design Options' document which includes building specifications and rating information.

## DETAILS

**Drawing title:** Elevations

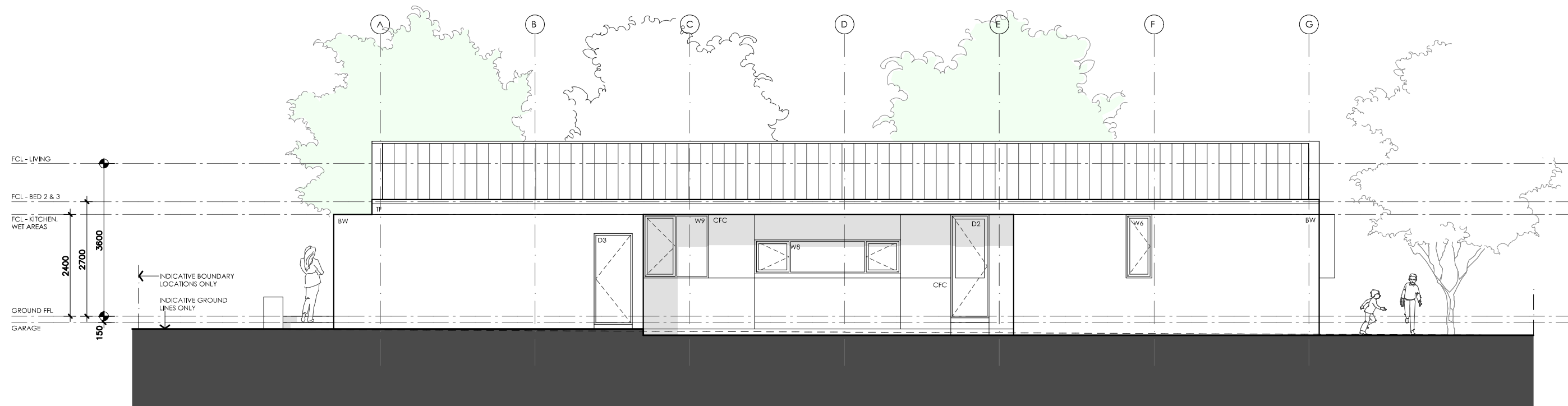
**Scale:** 1:100

**Paper size:** A3

**Drawing number:** 4/13

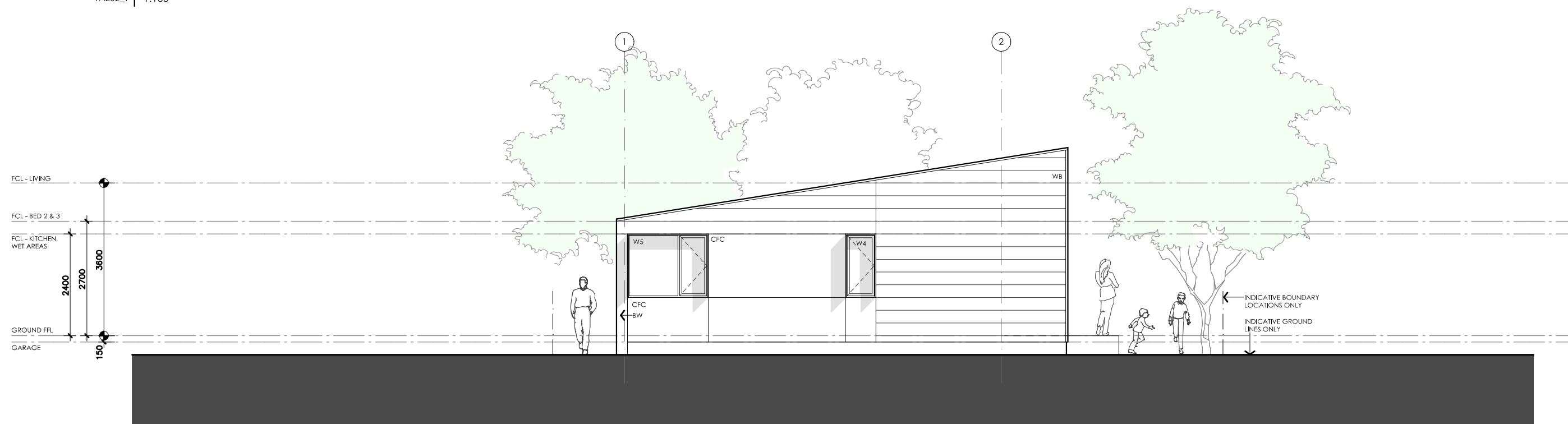
**Date issued:** March 2020

**Project stage:** Preliminary



01 SOUTH ELEVATION

1A202\_1 1:100



02 EAST ELEVATION

1A202\_1 1:100

# BANKSIA HOUSE

## LEGEND

- TF TIMBER FASCIA  
PROFILE/COLOUR AS SPEC
- WB WEATHERBOARD LINING ON TIMBER  
FRAMING & BATTENS  
PROFILE/COLOUR AS SPEC
- BW FACE BRICK WORK  
BRICK AS SPEC
- CFC COMPRESSED FC CLADDING ON TIMBER  
FRAMING & BATTENS  
PROFILE/COLOUR AS SPEC
- SB STEEL BEAM  
PAINT FINISH AS SPEC.
- GD GARAGE DOOR  
MAKE & COLOUR AS SPEC
- AL ALUMINIUM COVER PANEL - FOLDED  
FINISH/COLOUR TO MATCH WINDOW FRAMES

## PROJECT



## DISCLAIMER

This house plan is a guide only. It does not constitute legal or other professional advice. You should seek legal or other professional advice in relation to your specific circumstances before adopting any recommendation made within it e.g. advice on structural engineering or building certification requirements. The Commonwealth does not accept responsibility for the accuracy or completeness of this plan, its fitness for a particular purpose, or compliance with any regulatory requirements and standards. Further, the Commonwealth also disclaims liability, to the extent permitted by law, for any liabilities, losses, damages and costs arising from any reliance on the contents of this plan.

## DESIGN

**Banksia House**

**DESIGNED FOR**

**Canberra**

Technical drawings should be read with the Banksia House Canberra 'Design Options' document which includes building specifications and rating information.

## DETAILS

**Drawing title:** Elevations

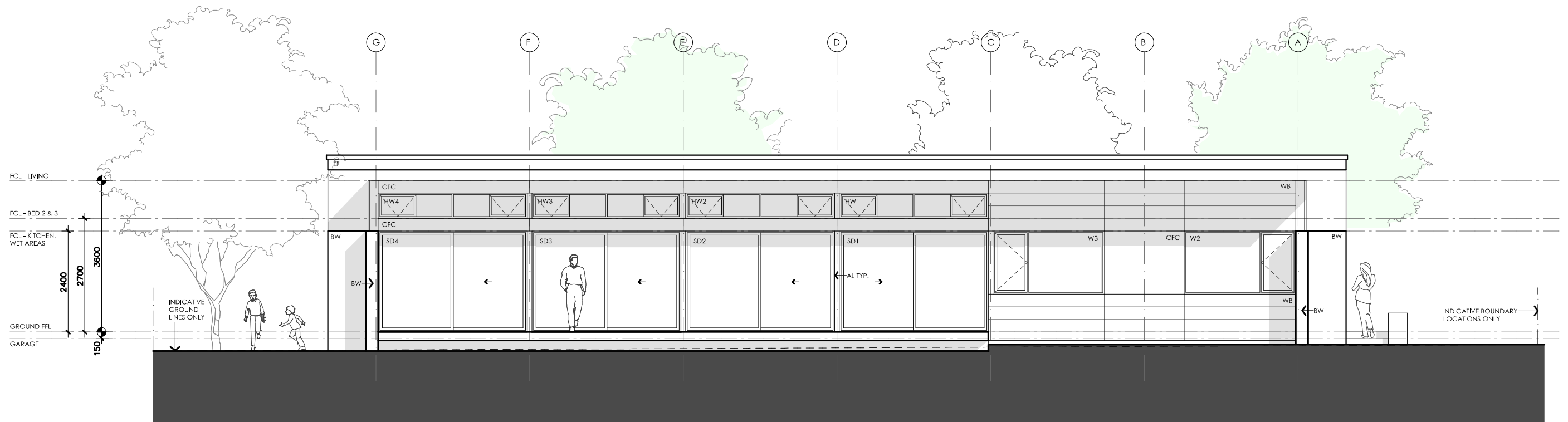
**Scale:** 1:100

**Paper size:** A3

**Drawing number:** 5/13

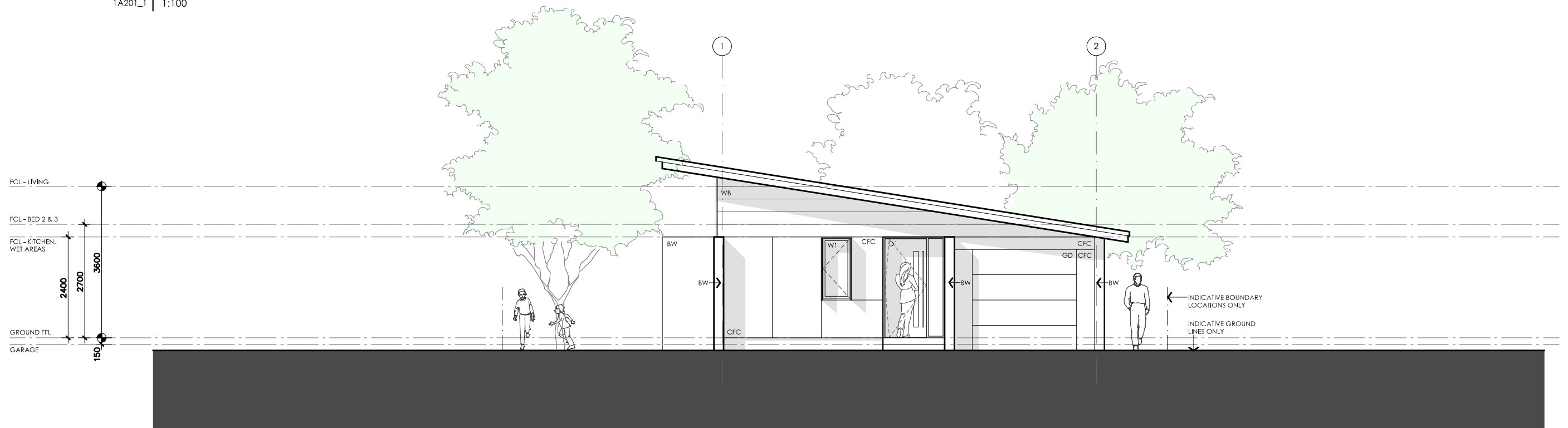
**Date issued:** March 2020

**Project stage:** Preliminary



01 NORTH ELEVATION

1A201\_1 1:100



02 WEST ELEVATION

1A201\_1 1:100

# BANKSIA HOUSE

## LEGEND

- TF TIMBER FASCIA  
PROFILE/COLOUR AS SPEC
- WB WEATHERBOARD LINING ON TIMBER  
FRAMING & BATTENS  
PROFILE/COLOUR AS SPEC
- BW FACE BRICK WORK  
BRICK AS SPEC
- CFC COMPRESSED FC CLADDING ON TIMBER  
FRAMING & BATTENS  
PROFILE/COLOUR AS SPEC
- SB STEEL BEAM  
PAINT FINISH AS SPEC.
- GD GARAGE DOOR  
MAKE & COLOUR AS SPEC
- AL ALUMINIUM COVER PANEL - FOLDED  
FINISH/COLOUR TO MATCH WINDOW FRAMES

## PROJECT



Australian Government



Australia's guide to environmentally sustainable homes



Design For Place

## DISCLAIMER

This house plan is a guide only. It does not constitute legal or other professional advice. You should seek legal or other professional advice in relation to your specific circumstances before adopting any recommendation made within it e.g. advice on structural engineering or building certification requirements. The Commonwealth does not accept responsibility for the accuracy or completeness of this plan, its fitness for a particular purpose, or compliance with any regulatory requirements and standards. Further, the Commonwealth also disclaims liability, to the extent permitted by law, for any liabilities, losses, damages and costs arising from any reliance on the contents of this plan.

## DESIGN

**Banksia House**

**DESIGNED FOR**

**Canberra**

Technical drawings should be read with the Banksia House Canberra 'Design Options' document which includes building specifications and rating information.

## DETAILS

**Drawing title:** Elevations – alt. roof line

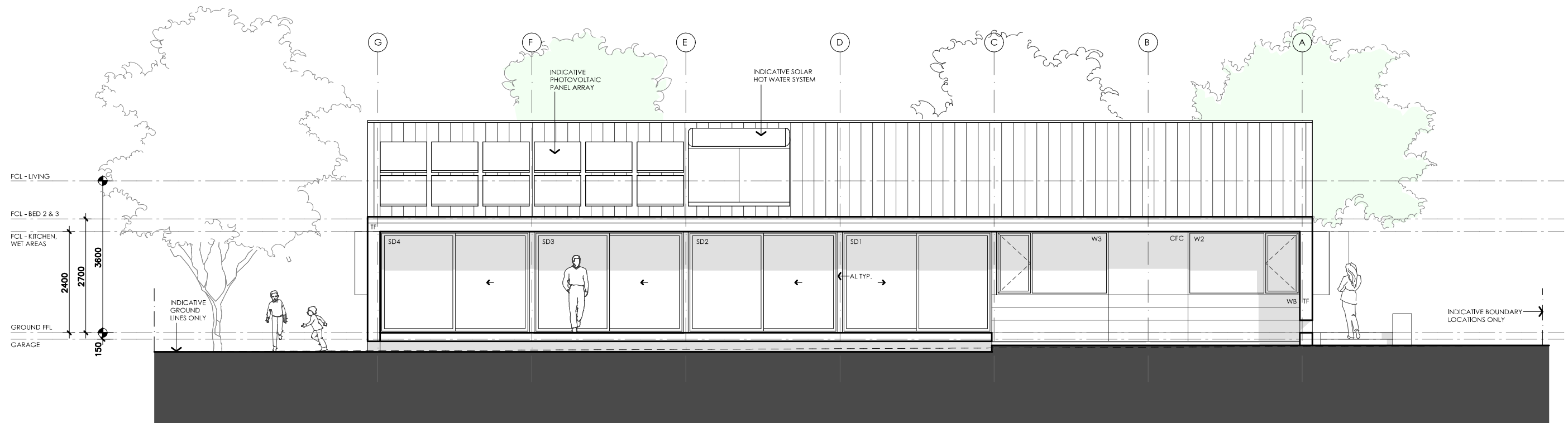
**Scale:** 1:100

**Paper size:** A3

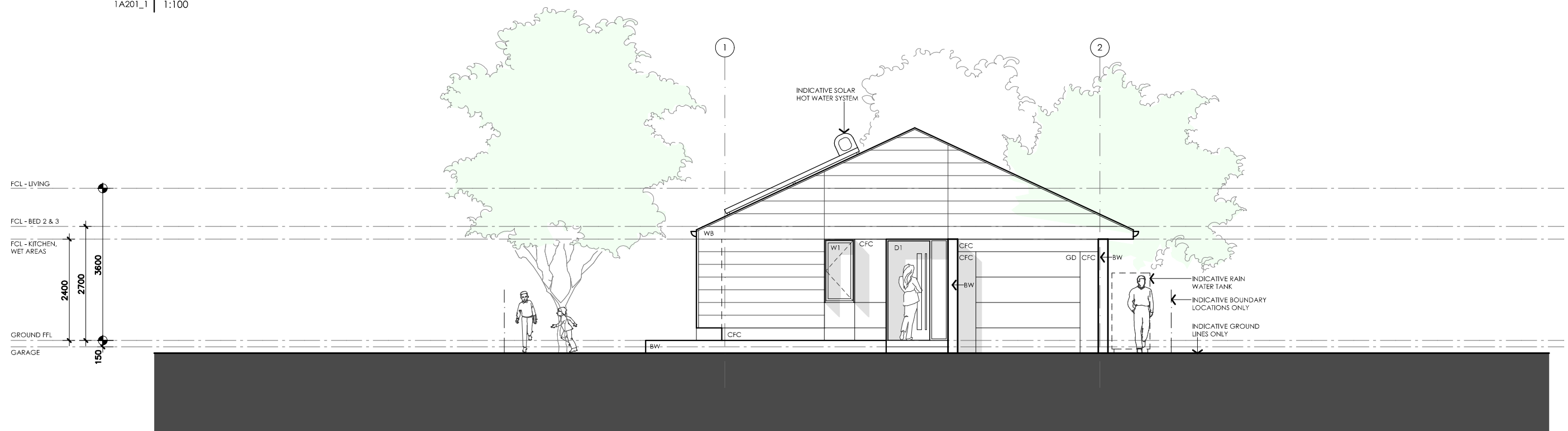
**Drawing number:** 6/13

**Date issued:** March 2020

**Project stage:** Preliminary






01 NORTH ELEVATION  
1A201\_1 1:100

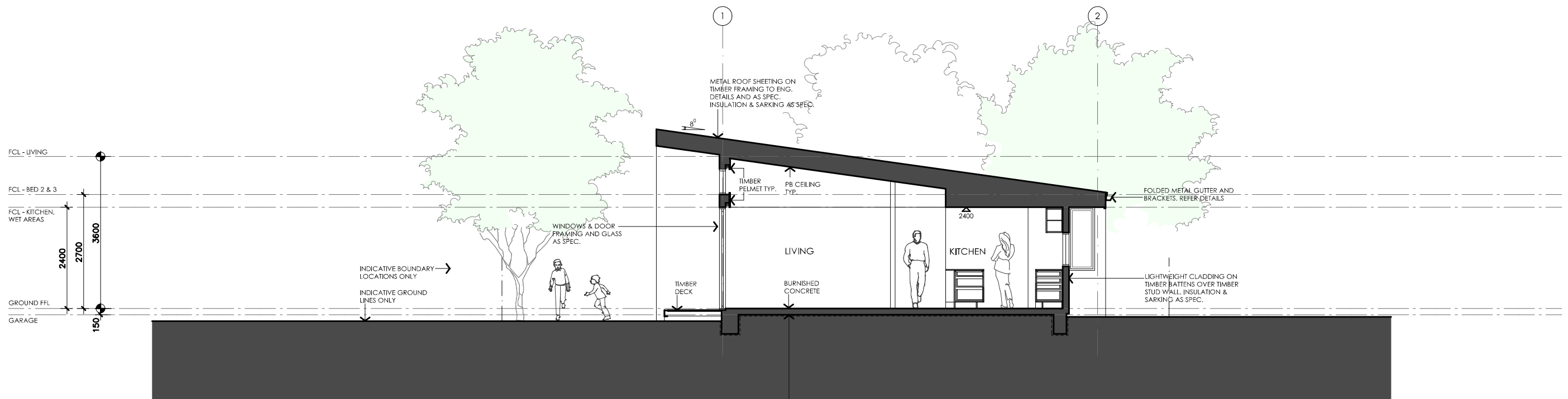


02 WEST ELEVATION  
1A201\_1 1:100

# BANKSIA HOUSE

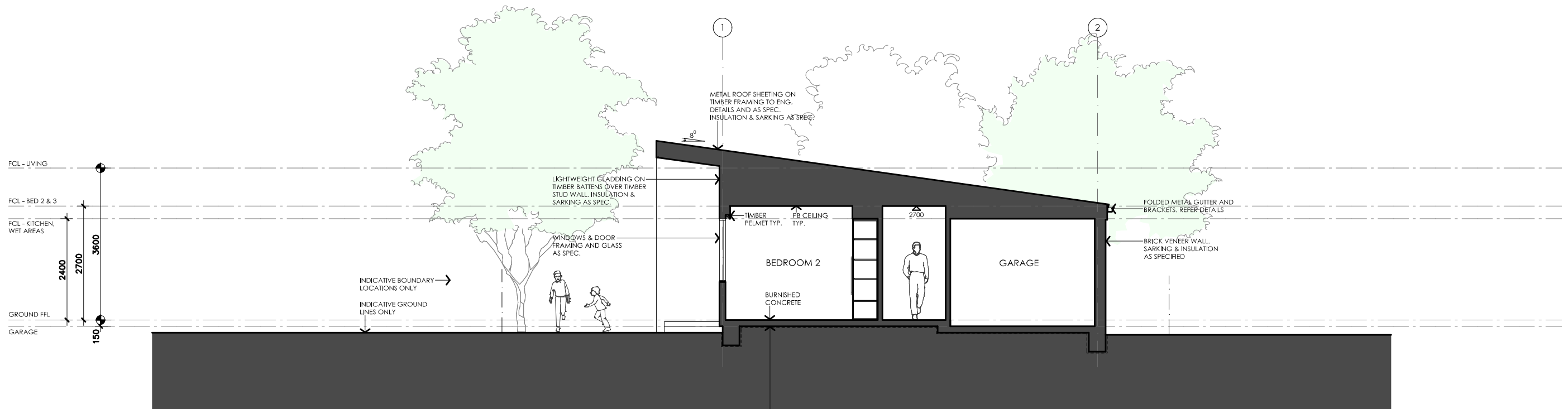
|  |   |  |  |
|--|---|--|--|
| <p><b>LEGEND</b></p> <p>TF TIMBER FASCIA<br/>PROFILE/COLOUR AS SPEC</p> <p>WB WEATHERBOARD LINING ON TIMBER<br/>FRAMING &amp; BATTENS<br/>PROFILE/COLOUR AS SPEC</p> <p>BW FACE BRICK WORK<br/>BRICK AS SPEC</p> <p>CFC COMPRESSED FC CLADDING ON TIMBER<br/>FRAMING &amp; BATTENS<br/>PROFILE/COLOUR AS SPEC</p> <p>SB STEEL BEAM<br/>PAINT FINISH AS SPEC.</p> <p>GD GARAGE DOOR<br/>MAKE &amp; COLOUR AS SPEC</p> <p>AL ALUMINIUM COVER PANEL - FOLDED<br/>FINISH/COLOUR TO MATCH WINDOW FRAMES</p> | <p><b>PROJECT</b></p> <p> Australian Government</p> <p> YourHome<br/>Australia's guide to environmentally sustainable homes</p> <p> Design For Place</p> <p><b>DISCLAIMER</b></p> <p>This house plan is a guide only. It does not constitute legal or other professional advice. You should seek legal or other professional advice in relation to your specific circumstances before adopting any recommendation made within it e.g. advice on structural engineering or building certification requirements. The Commonwealth does not accept responsibility for the accuracy or completeness of this plan, its fitness for a particular purpose, or compliance with any regulatory requirements and standards. Further, the Commonwealth also disclaims liability, to the extent permitted by law, for any liabilities, losses, damages and costs arising from any reliance on the contents of this plan.</p> | <p><b>DESIGN</b></p> <p><b>Banksia House</b></p> <p><b>DESIGNED FOR</b></p> <p><b>Canberra</b></p> <p>Technical drawings should be read with the Banksia House Canberra 'Design Options' document which includes building specifications and rating information.</p> | <p><b>DETAILS</b></p> <p><b>Drawing title:</b> Elevations – alt. roof line</p> <p><b>Scale:</b> 1:100</p> <p><b>Paper size:</b> A3</p> <p><b>Drawing number:</b> 7/13</p> <p><b>Date issued:</b> March 2020</p> <p><b>Project stage:</b> Preliminary</p> |
|--|---|--|--|





## 01 | SECTION AA

1A301\_1 | 1:100



## 02 | SECTION BB

1A301\_1 | 1:100

# BANKSIA HOUSE

### LEGEND

- TF TIMBER FASCIA  
PROFILE/COLOUR AS SPEC
- WB WEATHERBOARD LINING ON TIMBER  
FRAMING & BATTENS  
PROFILE/COLOUR AS SPEC
- BW FACE BRICK WORK  
BRICK AS SPEC
- CFC COMPRESSED FC CLADDING ON TIMBER  
FRAMING & BATTENS  
PROFILE/COLOUR AS SPEC
- SB STEEL BEAM  
PAINT FINISH AS SPEC.
- GD GARAGE DOOR  
MAKE & COLOUR AS SPEC
- AL ALUMINIUM COVER PANEL - FOLDED  
FINISH/COLOUR TO MATCH WINDOW FRAMES

### PROJECT



Australian Government



### DISCLAIMER

This house plan is a guide only. It does not constitute legal or other professional advice. You should seek legal or other professional advice in relation to your specific circumstances before adopting any recommendation made within it e.g. advice on structural engineering or building certification requirements. The Commonwealth does not accept responsibility for the accuracy or completeness of this plan, its fitness for a particular purpose, or compliance with any regulatory requirements and standards. Further, the Commonwealth also disclaims liability, to the extent permitted by law, for any liabilities, losses, damages and costs arising from any reliance on the contents of this plan.

### DESIGN

**Banksia House**

**DESIGNED FOR  
Canberra**

Technical drawings should be read with the Banksia House Canberra 'Design Options' document which includes building specifications and rating information.

### DETAILS

**Drawing title:** Sections

**Scale:** 1:100

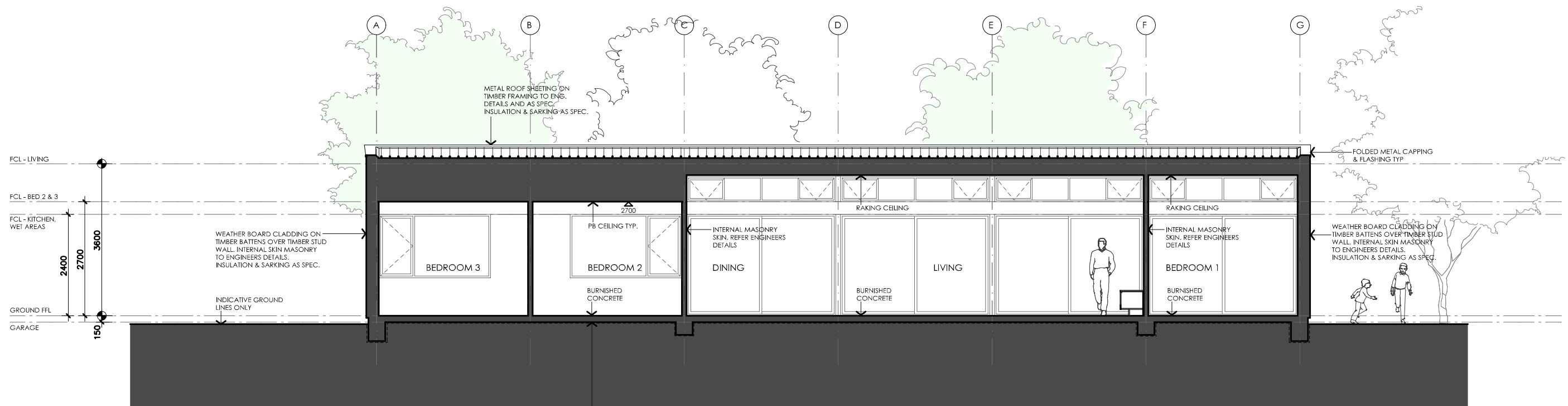
**Paper size:** A3

**Drawing number:** 8/13

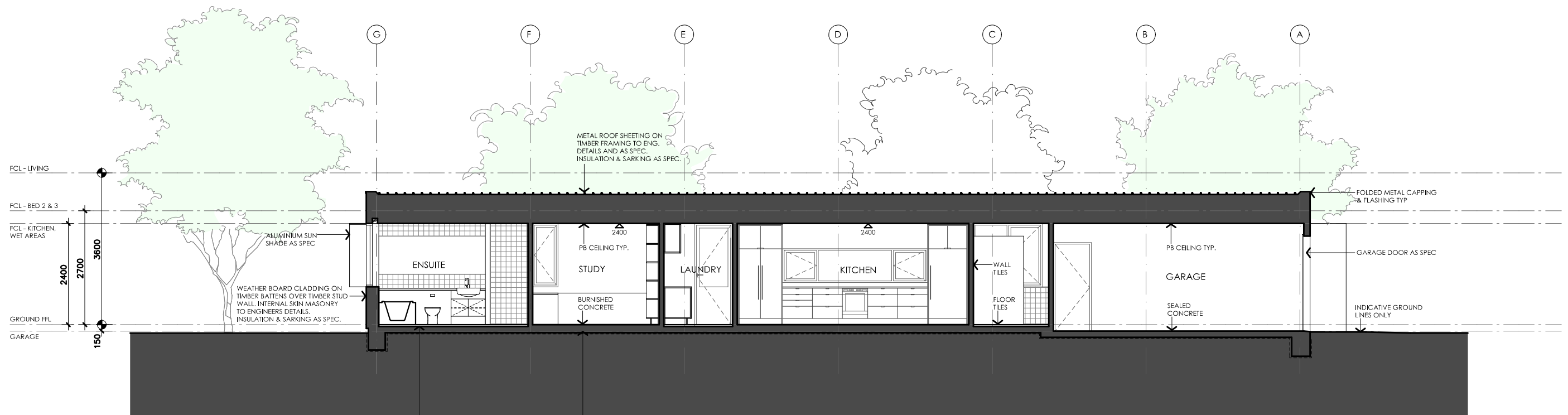
**Date issued:** March 2020

**Project stage:** Preliminary








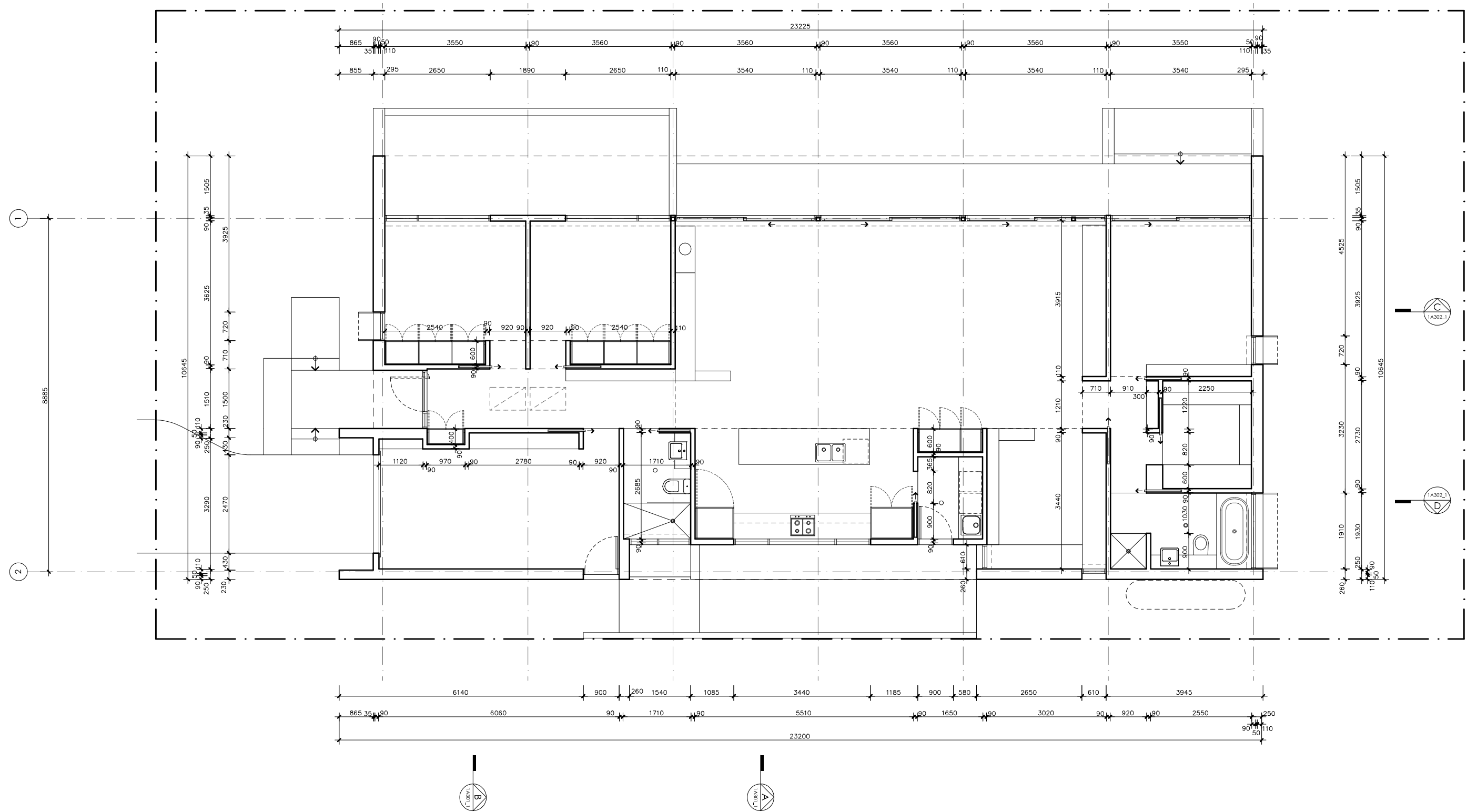
01 | SECTION CC  
1A302\_1 | 1:100







02 | SECTION DD  
1A302\_1 | 1:100

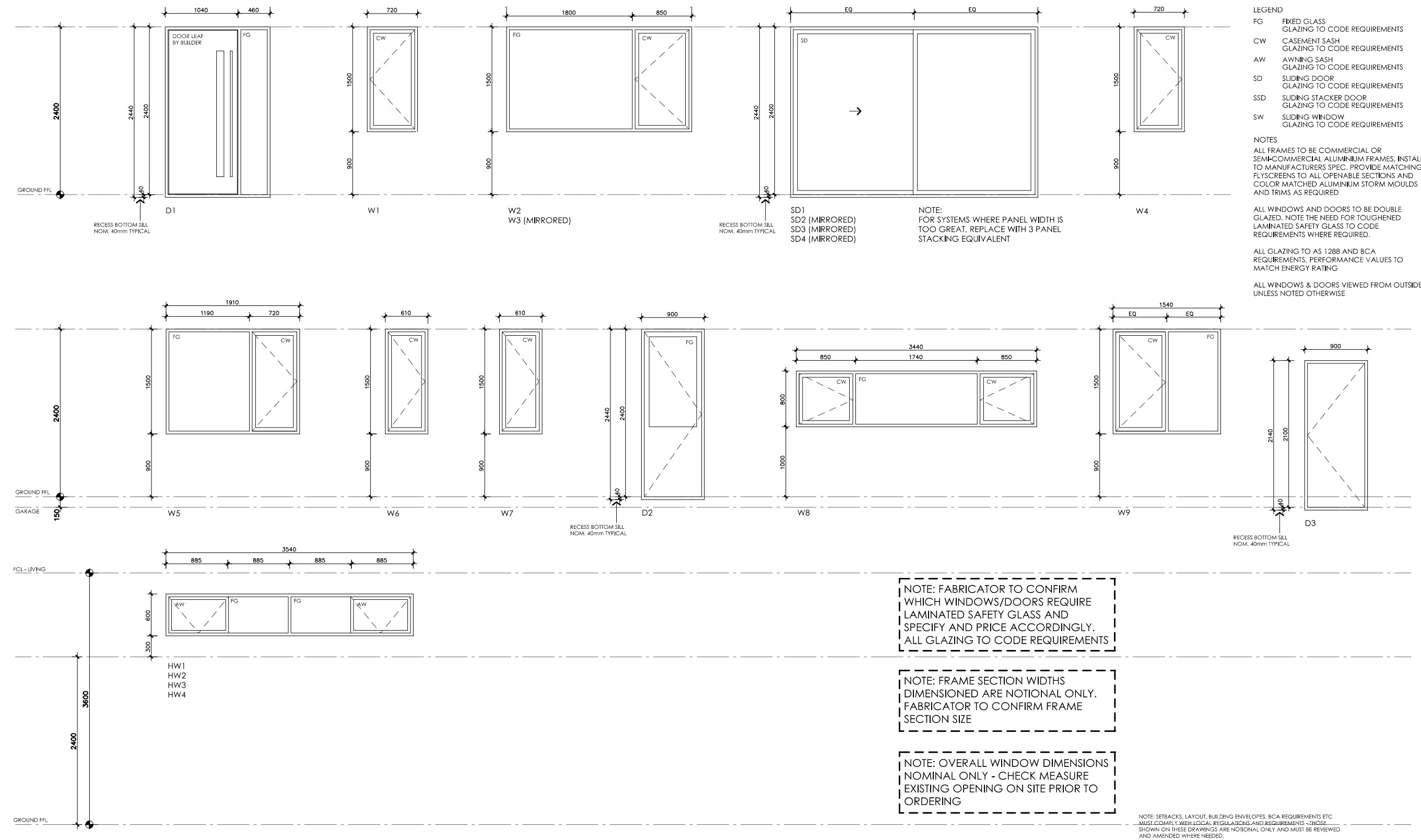
# BANKSIA HOUSE

|  |   |  |   |
|--|---|--|---|
| <p><b>LEGEND</b></p> <p>TF TIMBER FASCIA<br/>PROFILE/COLOUR AS SPEC</p> <p>WB WEATHERBOARD LINING ON TIMBER<br/>FRAMING &amp; BATTENS<br/>PROFILE/COLOUR AS SPEC</p> <p>BW FACE BRICK WORK<br/>BRICK AS SPEC</p> <p>CFC COMPRESSED FC CLADDING ON TIMBER<br/>FRAMING &amp; BATTENS<br/>PROFILE/COLOUR AS SPEC</p> <p>SB STEEL BEAM<br/>PAINT FINISH AS SPEC.</p> <p>GD GARAGE DOOR<br/>MAKE &amp; COLOUR AS SPEC</p> <p>AL ALUMINIUM COVER PANEL - FOLDED<br/>FINISH/COLOUR TO MATCH WINDOW FRAMES</p> | <p><b>PROJECT</b></p> <p> Australian Government</p> <p> YourHome<br/>Australia's guide to environmentally sustainable homes</p> <p> Design For Place</p> <p><b>DISCLAIMER</b></p> <p>This house plan is a guide only. It does not constitute legal or other professional advice. You should seek legal or other professional advice in relation to your specific circumstances before adopting any recommendation made within it e.g. advice on structural engineering or building certification requirements. The Commonwealth does not accept responsibility for the accuracy or completeness of this plan, its fitness for a particular purpose, or compliance with any regulatory requirements and standards. Further, the Commonwealth also disclaims liability, to the extent permitted by law, for any liabilities, losses, damages and costs arising from any reliance on the contents of this plan.</p> | <p><b>DESIGN</b></p> <p><b>Banksia House</b></p> <p><b>DESIGNED FOR</b></p> <p><b>Canberra</b></p> <p>Technical drawings should be read with the Banksia House Canberra 'Design Options' document which includes building specifications and rating information.</p> | <p><b>DETAILS</b></p> <p><b>Drawing title:</b> Sections</p> <p><b>Scale:</b> 1:100</p> <p><b>Paper size:</b> A3</p> <p><b>Drawing number:</b> 9/13</p> <p><b>Date issued:</b> March 2020</p> <p><b>Project stage:</b> Preliminary</p> |
|--|---|--|---|





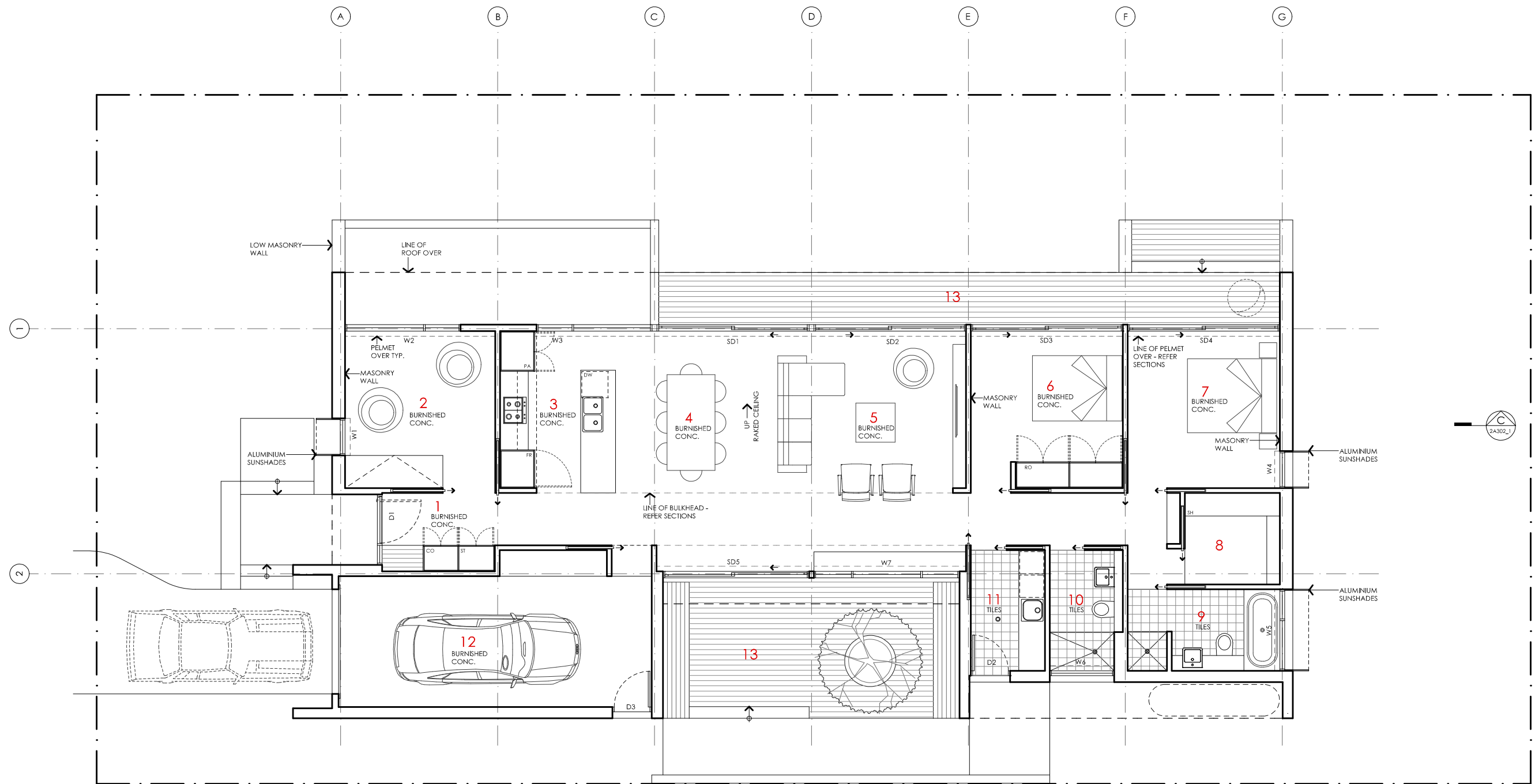
# BANKSIA HOUSE

|  |  |  |  |
|--|--|--|--|
| <b>LEGEND</b><br>N/A   | <b>PROJECT</b> <div><b>Australian Government</b></div> <div><b>YourHome</b><br/>Australia's guide to environmentally sustainable homes</div> <div><b>Design For Place</b></div> | <b>DESIGN</b><br><b>Banksia House</b><br><br><b>DESIGNED FOR</b><br><b>Canberra</b>  | <b>DETAILS</b><br><b>Drawing title:</b> Wall Setout Plan<br><b>Scale:</b> 1:100<br><b>Paper size:</b> A3   |
| <b>DISCLAIMER</b><br>This house plan is a guide only. It does not constitute legal or other professional advice. You should seek legal or other professional advice in relation to your specific circumstances before adopting any recommendation made within it e.g. advice on structural engineering or building certification requirements. The Commonwealth does not accept responsibility for the accuracy or completeness of this plan, its fitness for a particular purpose, or compliance with any regulatory requirements and standards. Further, the Commonwealth also disclaims liability, to the extent permitted by law, for any liabilities, losses, damages and costs arising from any reliance on the contents of this plan. |  | Technical drawings should be read with the Banksia House Canberra 'Design Options' document which includes building specifications and rating information. | <b>Drawing number:</b> 10/13<br><b>Date issued:</b> March 2020<br><b>Project stage:</b> Preliminary <div></div> |



# BANKSIA HOUSE

|               |   |  |  |  |  |
|---------------|---|--|--|--|--|
| LEGEND<br>N/A | PROJECT <div> Australian Government</div> <div> YourHome<br/>Australia's guide to environmentally sustainable homes</div> <div> Design For Place</div>   |  |  | DESIGN<br>Banksia House  | DETAILS  |
|               | DISCLAIMER <p>This house plan is a guide only. It does not constitute legal or other professional advice. You should seek legal or other professional advice in relation to your specific circumstances before adopting any recommendation made within it e.g. advice on structural engineering or building certification requirements. The Commonwealth does not accept responsibility for the accuracy or completeness of this plan, its fitness for a particular purpose, or compliance with any regulatory requirements and standards. Further, the Commonwealth also disclaims liability, to the extent permitted by law, for any liabilities, losses, damages and costs arising from any reliance on the contents of this plan.</p> |  |  | DESIGNED FOR<br>Canberra <p>Technical drawings should be read with the Banksia House Canberra 'Design Options' document which includes building specifications and rating information.</p> | <b>Drawing title:</b> Window Schedule<br><b>Scale:</b> 1:100<br><b>Paper size:</b> A3<br><b>Drawing number:</b> 11/13<br><b>Date issued:</b> March 2020<br><b>Project stage:</b> Preliminary |



#### KEY

- 1 ENTRY
- 2 STUDY / BEDROOM 3
- 3 KITCHEN
- 4 DINING
- 5 LIVING
- 6 BEDROOM 2
- 7 BEDROOM 1
- 8 ROBE
- 9 ENSUITE
- 10 BATHROOM
- 11 LAUNDRY
- 12 GARAGE
- 13 DECK

#### AREA

|                       |                          |
|-----------------------|--------------------------|
| GROUND FLOOR LIVING   | 141 m <sup>2</sup>       |
| GARAGE                | 28 m <sup>2</sup>        |
| <b>TOTAL GFA</b>      | <b>169 m<sup>2</sup></b> |
| GROUND FLOOR DECKS    | 35 m <sup>2</sup>        |
| INDICATIVE BLOCK SIZE | 544 m <sup>2</sup>       |

NOTE: GFA CALCULATIONS DO NOT INCLUDE DECKS, CARPORTS, COURTYARDS, VERANDAHS OR NIB WALLS

# BANKSIA HOUSE

#### LEGEND

N/A

#### PROJECT



#### DESIGN

**Banksia House**

#### DESIGNED FOR

**Canberra**

Technical drawings should be read with the Banksia House Canberra 'Design Options' document which includes building specifications and rating information.

#### DETAILS

**Drawing title:** Alt Floor Plan - 2 Bedroom

**Scale:** 1:100

**Paper size:** A3

**Drawing number:** 12/13

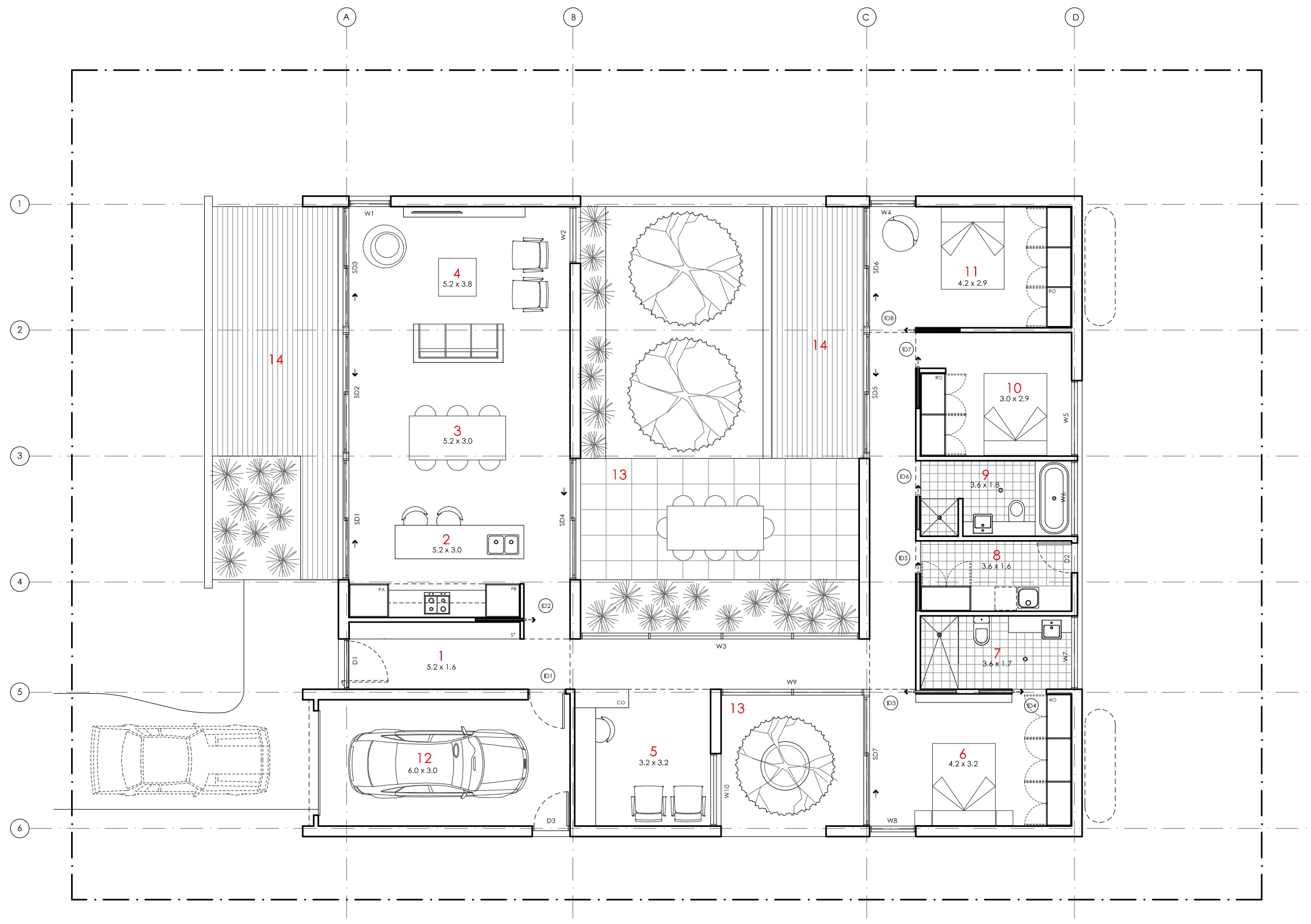
**Date issued:** March 2020

**Project stage:** Preliminary






#### DISCLAIMER

This house plan is a guide only. It does not constitute legal or other professional advice. You should seek legal or other professional advice in relation to your specific circumstances before adopting any recommendation made within it e.g. advice on structural engineering or building certification requirements. The Commonwealth does not accept responsibility for the accuracy or completeness of this plan, its fitness for a particular purpose, or compliance with any regulatory requirements and standards. Further, the Commonwealth also disclaims liability, to the extent permitted by law, for any liabilities, losses, damages and costs arising from any reliance on the contents of this plan.



# BANKSIA HOUSE

|  |  |  |  |                                 |   |
|--|--|--|--|---------------------------------|---|
| LEGEND<br><br>N/A  | PROJECT  |  |  | DESIGN<br><b>Banksia House</b>  | DETAILS   |
|  | <div> <b>Australian Government</b></div> <div> <b>YourHome</b><br/>Australia's guide to environmentally sustainable homes</div> <div> <b>Design For Place</b></div> |  |  | DESIGNED FOR<br><b>Canberra</b> | <b>Drawing title:</b> Alt Floor Plan - Courtyard<br><b>Scale:</b> 1:100<br><b>Paper size:</b> A3<br><b>Drawing number:</b> 13/13<br><b>Date issued:</b> March 2020<br><b>Project stage:</b> Preliminary |
| DISCLAIMER<br><p>This house plan is a guide only. It does not constitute legal or other professional advice. You should seek legal or other professional advice in relation to your specific circumstances before adopting any recommendation made within it e.g. advice on structural engineering or building certification requirements. The Commonwealth does not accept responsibility for the accuracy or completeness of this plan, its fitness for a particular purpose, or compliance with any regulatory requirements and standards. Further, the Commonwealth also disclaims liability, to the extent permitted by law, for any liabilities, losses, damages and costs arising from any reliance on the contents of this plan.</p> |  |  |  |                                 |   |

N

