



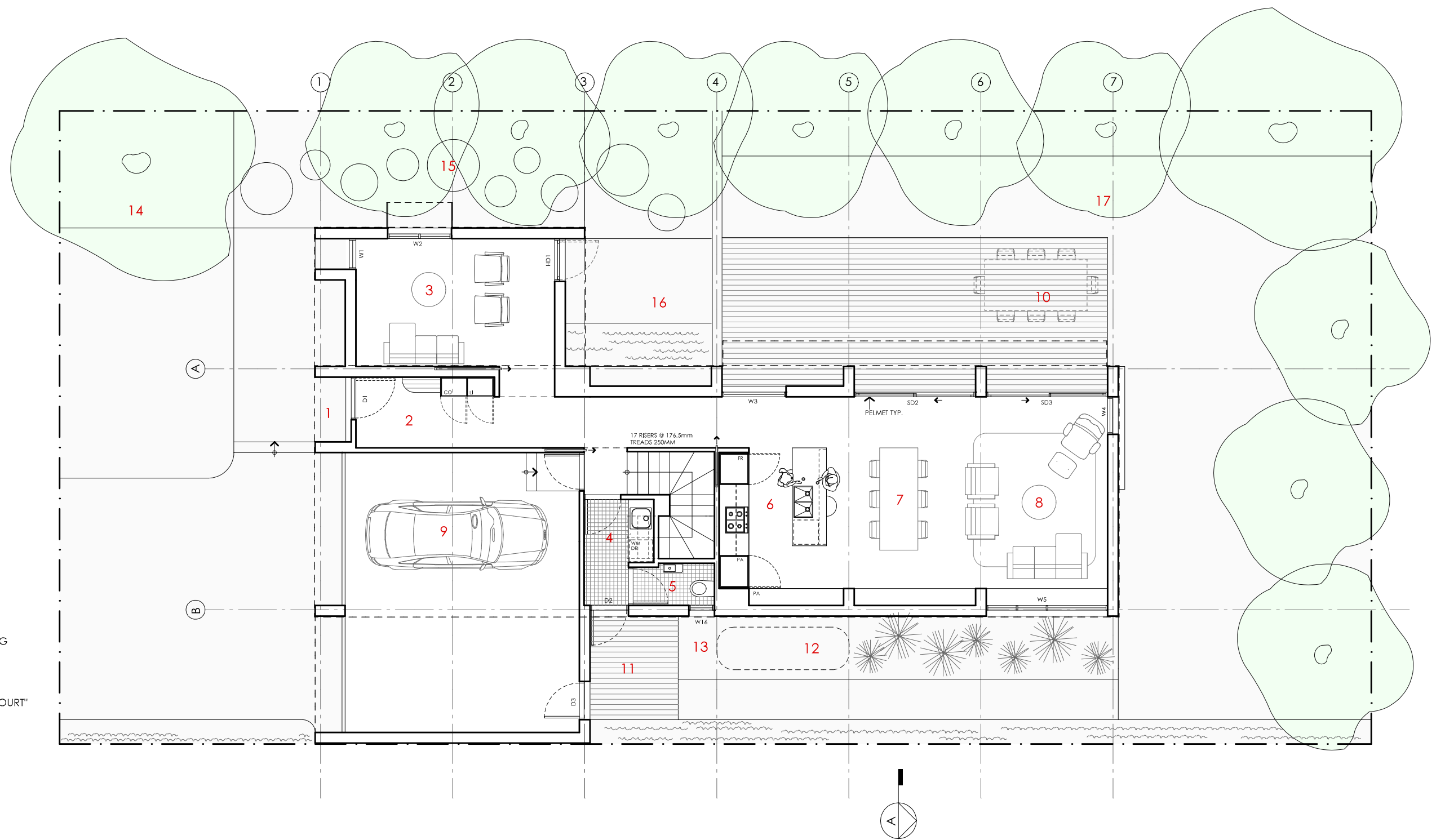






TELOPEA HOUSE

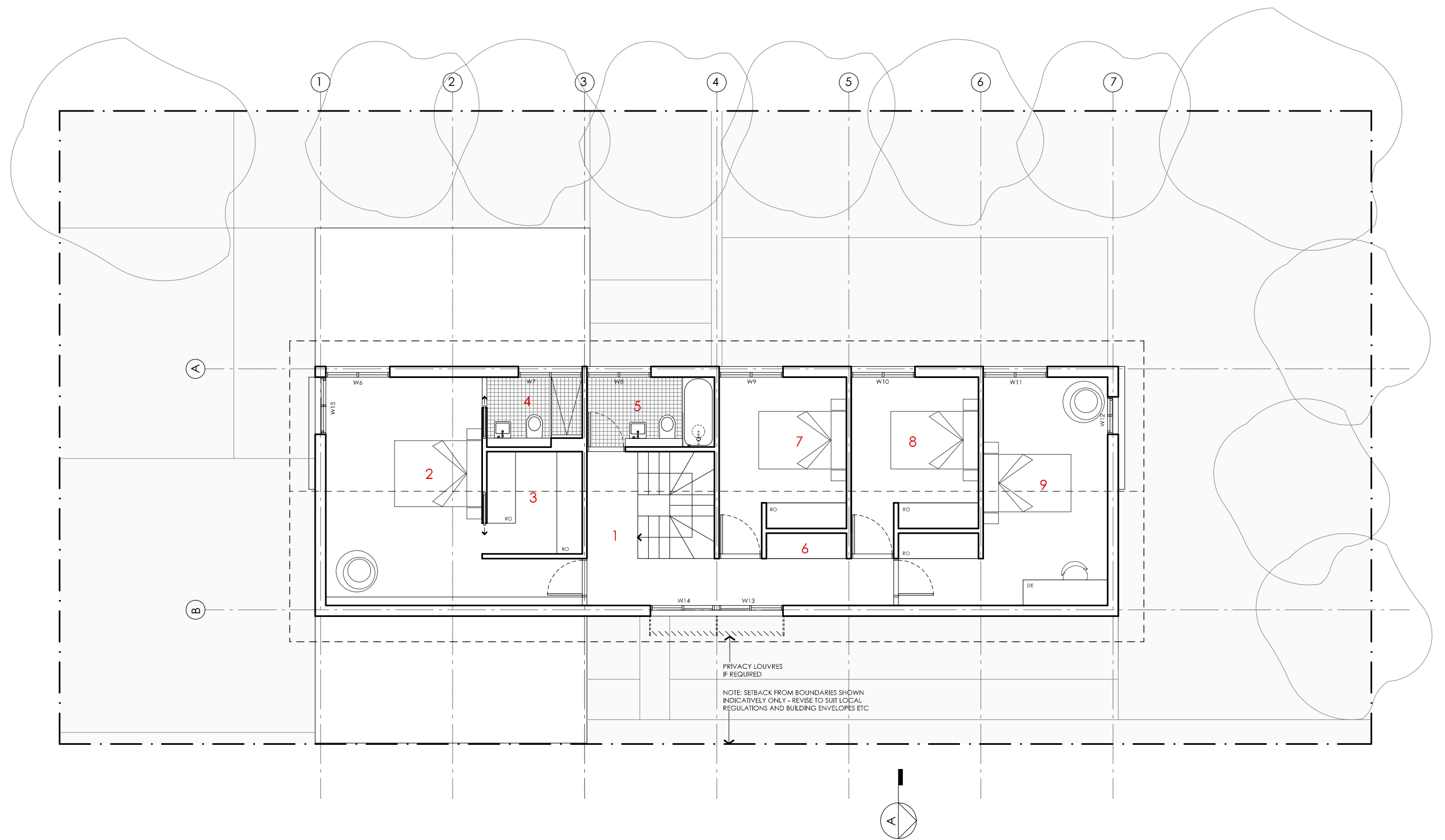
<p>LEGEND</p> <p>N/A</p>	<p>PROJECT</p> <div>  <p>Australian Government</p> </div> <div>  <p>YourHome</p> <p>Australia's guide to environmentally sustainable homes</p> </div> <div>  <p>Design For Place</p> </div>	<p>DESIGN</p> <p>Telopea House</p> <p>DESIGNED FOR</p> <p>Adelaide</p>	<p>DETAILS</p> <p>Drawing title: Site Plan</p> <p>Scale: 1:200</p> <p>Paper size: A3</p>
	<p>DISCLAIMER</p> <p>This house plan is a guide only. It does not constitute legal or other professional advice. You should seek legal or other professional advice in relation to your specific circumstances before adopting any recommendation made within it e.g. advice on structural engineering or building certification requirements. The Commonwealth does not accept responsibility for the accuracy or completeness of this plan, its fitness for a particular purpose, or compliance with any regulatory requirements and standards. Further, the Commonwealth also disclaims liability, to the extent permitted by law, for any liabilities, losses, damages and costs arising from any reliance on the contents of this plan.</p>	<p>Technical drawings should be read with the Telopea House Adelaide 'Design Options' document which includes building specifications and rating information.</p>	<p>Drawing number: 1/12</p> <p>Date issued: March 2020</p> <p>Project stage: Preliminary</p> <div>  <p>N</p> </div>



- KEY**
- 1 ENTRY PORTICO
 - 2 ENTRY
 - 3 LIVING 2
 - 4 LAUNDRY
 - 5 POWDER ROOM
 - 6 KITCHEN
 - 7 DINING
 - 8 LIVING
 - 9 GARAGE
 - 10 OUTDOOR ENTERTAINING
 - 11 DECK
 - 12 WATER TANK
 - 13 SERVICES ZONE
 - 14 "STREET COURT"
 - 15 "WINTER AFTERNOON COURT"
 - 16 "REFLECTIVE COURT"
 - 17 "ENTERTAINING COURT"





TELOPEA HOUSE

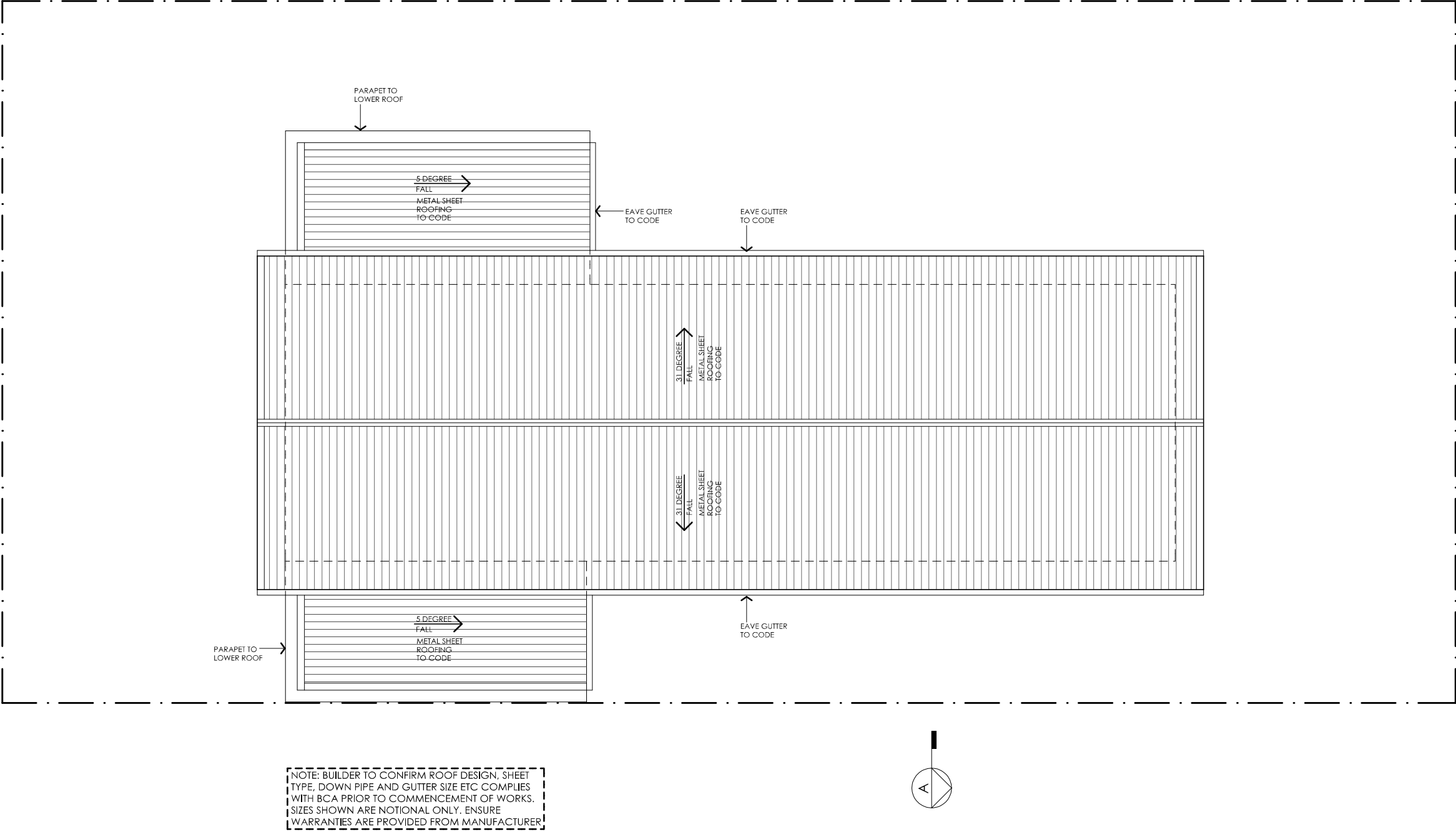
<p>NOTES</p> <p>GFL LIVING 89 m2 GARAGE 41 m2</p> <p>UFL LIVING 101 m2</p> <p>TOTAL GFA 231 m2</p> <p><small>NOTE: GFA CALCULATIONS DO NOT INCLUDE DECKS, TERRACES, COURTYARDS, VERANDAHs, VOIDS, STAIRS & BALCONIES @ UFL. NOTE THAT INTERNAL ROOM DIMENSIONS ARE NOMINAL ONLY AND GENERALLY INCLUDE JOINERY WITHIN THOSE DIMENSIONS.</small></p>	<p>PROJECT</p> <div>    </div> <p>DISCLAIMER</p> <p>This house plan is a guide only. It does not constitute legal or other professional advice. You should seek legal or other professional advice in relation to your specific circumstances before adopting any recommendation made within it e.g. advice on structural engineering or building certification requirements. The Commonwealth does not accept responsibility for the accuracy or completeness of this plan, its fitness for a particular purpose, or compliance with any regulatory requirements and standards. Further, the Commonwealth also disclaims liability, to the extent permitted by law, for any liabilities, losses, damages and costs arising from any reliance on the contents of this plan.</p>	<p>DESIGN</p> <p>Telopea House</p> <p>DESIGNED FOR</p> <p>Adelaide</p> <p>Technical drawings should be read with the Telopea House Adelaide 'Design Options' document which includes building specifications and rating information.</p>	<p>DETAILS</p> <p>Drawing title: Ground Floor Plan</p> <p>Scale: 1:100</p> <p>Paper size: A3</p> <p>Drawing number: 2/12</p> <p>Date issued: March 2020</p> <p>Project stage: Preliminary</p> <div>  </div>
---	--	--	---



- KEY
- 1 LANDING
 - 2 BEDROOM 1
 - 3 LIVING 2 / RUMPUS
 - 4 ENSUITE
 - 5 BATHROOM
 - 6 STORAGE
 - 7 BEDROOM 2
 - 8 BEDROOM 3
 - 9 BEDROOM 4

TELOPEA HOUSE

<div>NOTES</div> <div><div><div>GFL LIVING</div><div>89 m2</div></div><div><div>GARAGE</div><div>41 m2</div></div><div><div>UFL LIVING</div><div>101 m2</div></div><div><div>TOTAL GFA</div><div>231 m2</div></div></div> <div><div>NOTE: GFA CALCULATIONS DO NOT INCLUDE DECKS, TERRACES, COURTYARDS, VERANDAHS, VOIDS, STAIRS & BALCONIES @ UFL. NOTE THAT INTERNAL ROOM DIMENSIONS ARE NOMINAL ONLY AND GENERALLY INCLUDE JOINERY WITHIN THOSE DIMENSIONS.</div></div>	<div><div>PROJECT</div><div><div><div></div><div><div>Australian Government</div></div></div><div><div></div><div><div>Australia's guide to environmentally sustainable homes</div></div></div><div><div></div><div><div>Design For Place</div></div></div></div></div>	<div><div>DESIGN</div><div>Telopea House</div><div>DESIGNED FOR</div><div>Adelaide</div><div>Technical drawings should be read with the Telopea House Adelaide 'Design Options' document which includes building specifications and rating information.</div></div>	<div><div>DETAILS</div><div><div>Drawing title:</div><div>First Floor Plan</div></div><div><div>Scale:</div><div>1:100</div></div><div><div>Paper size:</div><div>A3</div></div><div><div>Drawing number:</div><div>3/12</div></div><div><div>Date issued:</div><div>March 2020</div></div><div><div>Project stage:</div><div>Preliminary</div></div></div> <div><div></div><div>N</div></div>
	<div><div>DISCLAIMER</div><div>This house plan is a guide only. It does not constitute legal or other professional advice. You should seek legal or other professional advice in relation to your specific circumstances before adopting any recommendation made within it e.g. advice on structural engineering or building certification requirements. The Commonwealth does not accept responsibility for the accuracy or completeness of this plan, its fitness for a particular purpose, or compliance with any regulatory requirements and standards. Further, the Commonwealth also disclaims liability, to the extent permitted by law, for any liabilities, losses, damages and costs arising from any reliance on the contents of this plan.</div></div>		



TELOPEA HOUSE




LEGEND N/A	PROJECT <div> Australian Government</div> <div> YourHome Australia's guide to environmentally sustainable homes</div> <div> Design For Place</div>			DESIGN Telopea House	DETAILS
	DISCLAIMER <p>This house plan is a guide only. It does not constitute legal or other professional advice. You should seek legal or other professional advice in relation to your specific circumstances before adopting any recommendation made within it e.g. advice on structural engineering or building certification requirements. The Commonwealth does not accept responsibility for the accuracy or completeness of this plan, its fitness for a particular purpose, or compliance with any regulatory requirements and standards. Further, the Commonwealth also disclaims liability, to the extent permitted by law, for any liabilities, losses, damages and costs arising from any reliance on the contents of this plan.</p>			DESIGNED FOR Adelaide Technical drawings should be read with the Telopea House Adelaide 'Design Options' document which includes building specifications and rating information.	Drawing title: Roof Plan Scale: 1:100 Paper size: A3 Drawing number: 4/12 Date issued: March 2020 Project stage: Preliminary





01 | STREET ELEVATION SINGLE GARAGE VERSION SHOWN
1:100




TELOPEA HOUSE

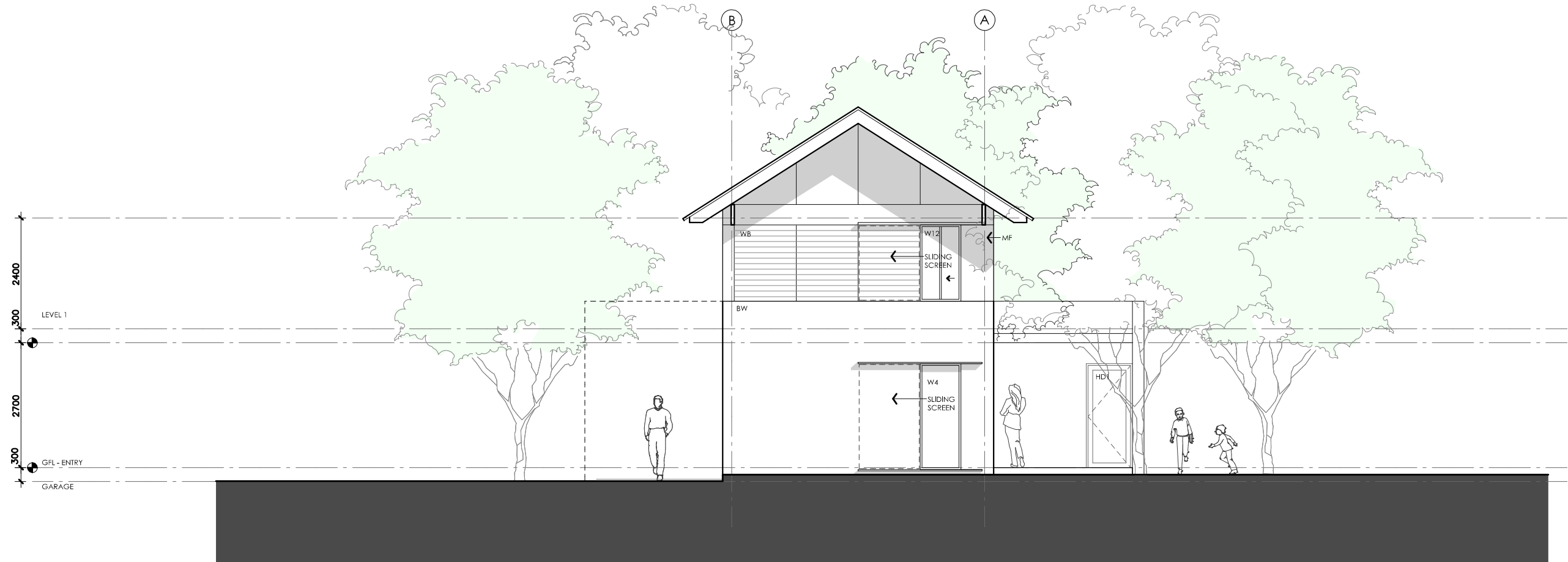
LEGEND BW FACE BRICK WALL TYPE & COLOUR TBC WB WEATHERBOARD CLADDING TYPE & COLOUR TBC CFC COMPRESSED FC SHEET ON TIMBER FRAME EXPRESSED JOINT AT EDGES INDICATED MF FOLDED METAL FASCIA COLOUR TBC ST STEEL WORK COLOUR TBC GD GARAGE DOOR COLOUR TBC AL ALUMINIUM COVER PLATE COLOUR TO MATCH WINDOW FRAMES	PROJECT  Australian Government  YourHome Australia's guide to environmentally sustainable homes  Design For Place	DESIGN Telopea House DESIGNED FOR Adelaide Technical drawings should be read with the Telopea House Adelaide 'Design Options' document which includes building specifications and rating information.	DETAILS Drawing title: Elevation Scale: 1:100 Paper size: A3 Drawing number: 5/12 Date issued: March 2020 Project stage: Preliminary
DISCLAIMER This house plan is a guide only. It does not constitute legal or other professional advice. You should seek legal or other professional advice in relation to your specific circumstances before adopting any recommendation made within it e.g. advice on structural engineering or building certification requirements. The Commonwealth does not accept responsibility for the accuracy or completeness of this plan, its fitness for a particular purpose, or compliance with any regulatory requirements and standards. Further, the Commonwealth also disclaims liability, to the extent permitted by law, for any liabilities, losses, damages and costs arising from any reliance on the contents of this plan.			



01 | NORTH ELEVATION
1:100




TELOPEA HOUSE

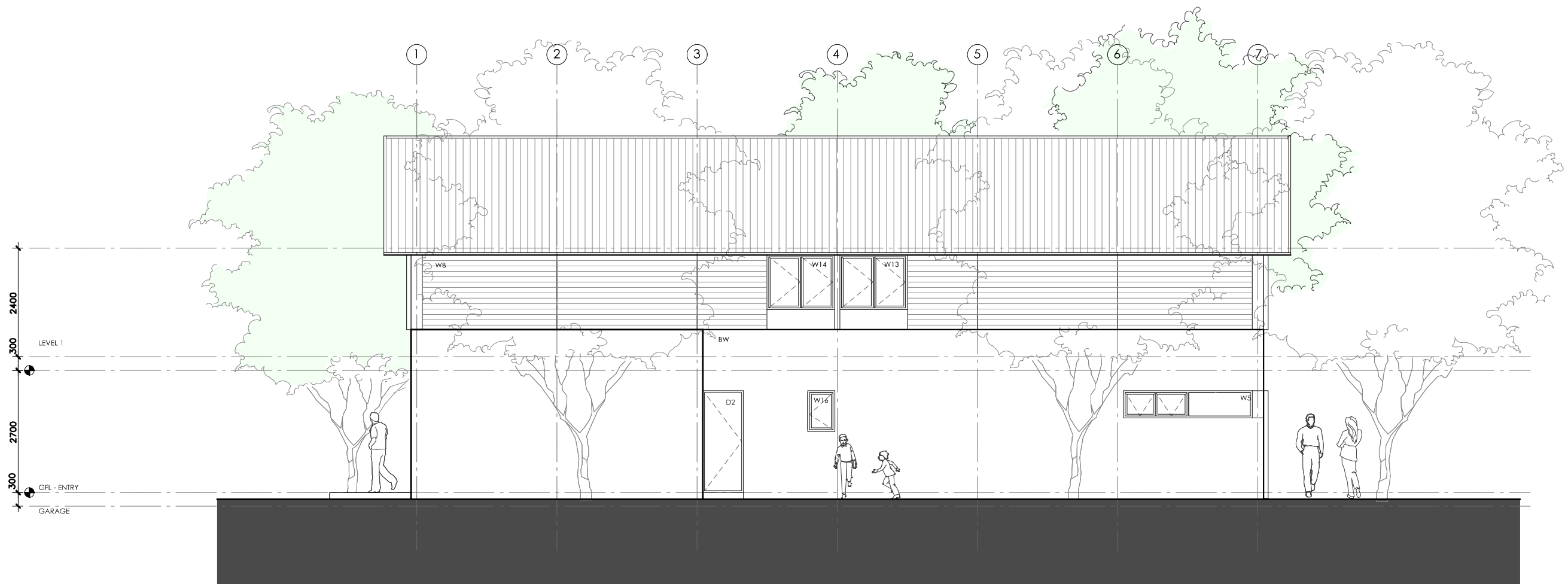
<p>LEGEND</p> <p>BW FACE BRICK WALL TYPE & COLOUR TBC</p> <p>WB WEATHERBOARD CLADDING TYPE & COLOUR TBC</p> <p>CFC COMPRESSED FC SHEET ON TIMBER FRAME EXPRESSED JOINT AT EDGES INDICATED</p> <p>MF FOLDED METAL FASCIA COLOUR TBC</p> <p>ST STEEL WORK COLOUR TBC</p> <p>GD GARAGE DOOR COLOUR TBC</p> <p>AL ALUMINIUM COVER PLATE COLOUR TO MATCH WINDOW FRAMES</p>	<p>PROJECT</p> <div>  <p>Australian Government</p> </div> <div>  <p>YourHome Australia's guide to environmentally sustainable homes</p> </div> <div>  <p>Design For Place</p> </div> <p>DISCLAIMER</p> <p>This house plan is a guide only. It does not constitute legal or other professional advice. You should seek legal or other professional advice in relation to your specific circumstances before adopting any recommendation made within it e.g. advice on structural engineering or building certification requirements. The Commonwealth does not accept responsibility for the accuracy or completeness of this plan, its fitness for a particular purpose, or compliance with any regulatory requirements and standards. Further, the Commonwealth also disclaims liability, to the extent permitted by law, for any liabilities, losses, damages and costs arising from any reliance on the contents of this plan.</p>	<p>DESIGN</p> <p>Telopea House</p> <p>DESIGNED FOR</p> <p>Adelaide</p> <p>Technical drawings should be read with the Telopea House Adelaide 'Design Options' document which includes building specifications and rating information.</p>	<p>DETAILS</p> <p>Drawing title: Elevation</p> <p>Scale: 1:100</p> <p>Paper size: A3</p> <p>Drawing number: 6/12</p> <p>Date issued: March 2020</p> <p>Project stage: Preliminary</p>
--	--	--	--



01 | EAST ELEVATION
1:100




TELOPEA HOUSE

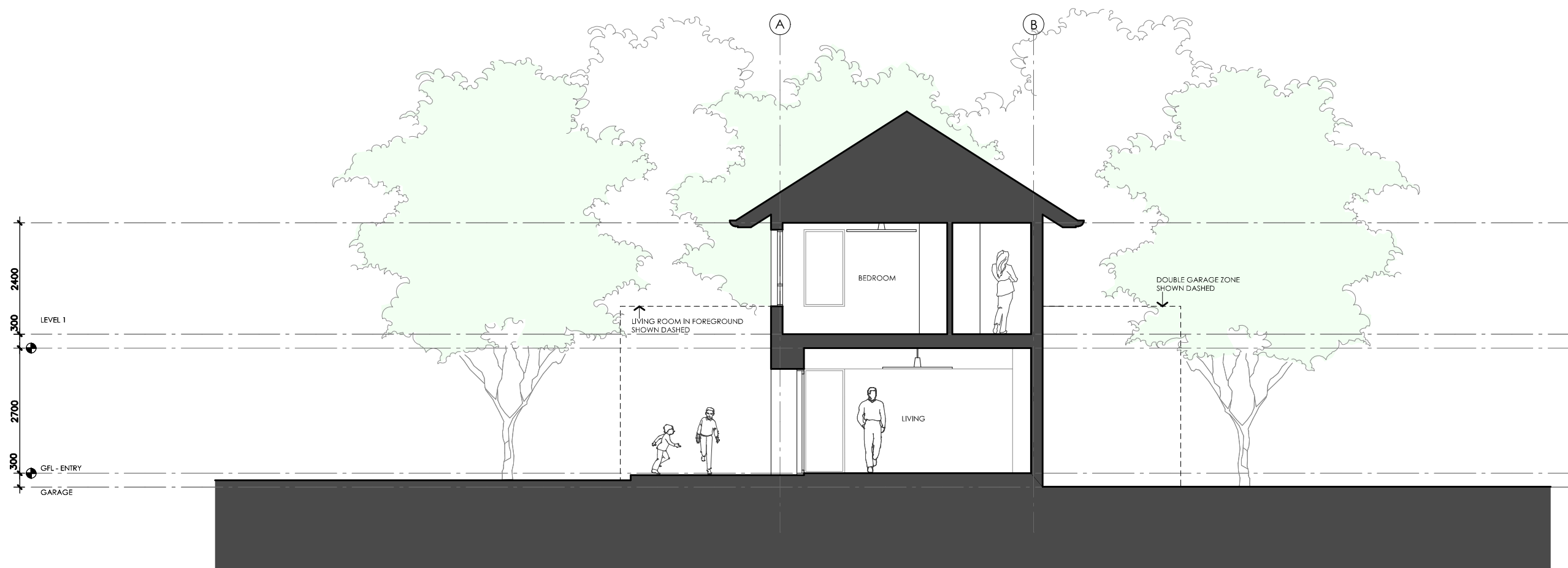
LEGEND BW FACE BRICK WALL TYPE & COLOUR TBC WB WEATHERBOARD CLADDING TYPE & COLOUR TBC CFC COMPRESSED FC SHEET ON TIMBER FRAME EXPRESSED JOINT AT EDGES INDICATED MF FOLDED METAL FASCIA COLOUR TBC ST STEEL WORK COLOUR TBC GD GARAGE DOOR COLOUR TBC AL ALUMINIUM COVER PLATE COLOUR TO MATCH WINDOW FRAMES	PROJECT  Australian Government  YourHome Australia's guide to environmentally sustainable homes  Design For Place DISCLAIMER This house plan is a guide only. It does not constitute legal or other professional advice. You should seek legal or other professional advice in relation to your specific circumstances before adopting any recommendation made within it e.g. advice on structural engineering or building certification requirements. The Commonwealth does not accept responsibility for the accuracy or completeness of this plan, its fitness for a particular purpose, or compliance with any regulatory requirements and standards. Further, the Commonwealth also disclaims liability, to the extent permitted by law, for any liabilities, losses, damages and costs arising from any reliance on the contents of this plan.	DESIGN Telopea House DESIGNED FOR Adelaide Technical drawings should be read with the Telopea House Adelaide 'Design Options' document which includes building specifications and rating information.	DETAILS Drawing title: Elevation Scale: 1:100 Paper size: A3 Drawing number: 7/12 Date issued: March 2020 Project stage: Preliminary
--	---	---	---



01 | SOUTH ELEVATION
1:100

TELOPEA HOUSE

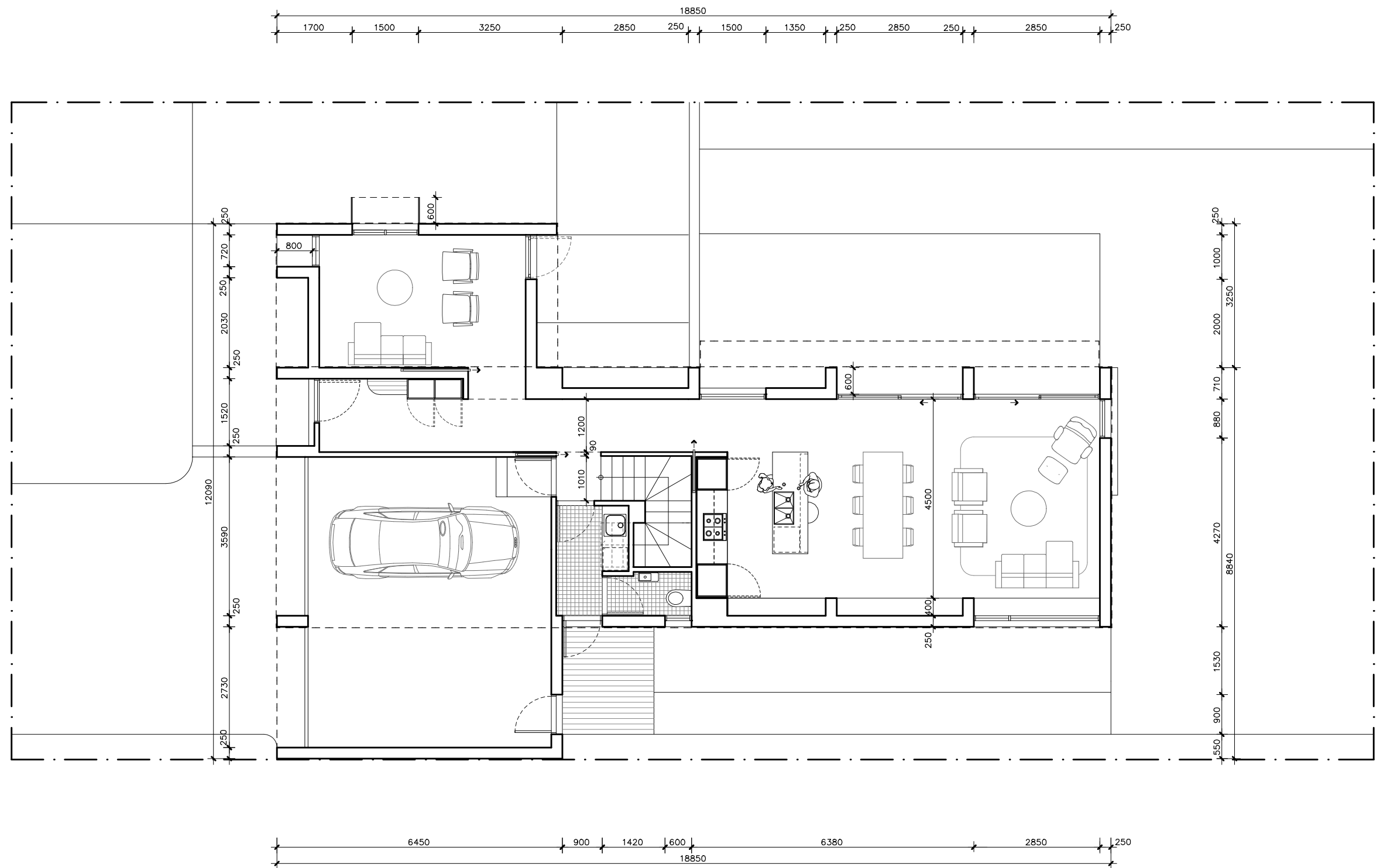
LEGEND BW FACE BRICK WALL TYPE & COLOUR TBC WB WEATHERBOARD CLADDING TYPE & COLOUR TBC CFC COMPRESSED FC SHEET ON TIMBER FRAME EXPRESSED JOINT AT EDGES INDICATED MF FOLDED METAL FASCIA COLOUR TBC ST STEEL WORK COLOUR TBC GD GARAGE DOOR COLOUR TBC AL ALUMINIUM COVER PLATE COLOUR TO MATCH WINDOW FRAMES	PROJECT  Australian Government  YourHome Australia's guide to environmentally sustainable homes  Design For Place DISCLAIMER This house plan is a guide only. It does not constitute legal or other professional advice. You should seek legal or other professional advice in relation to your specific circumstances before adopting any recommendation made within it e.g. advice on structural engineering or building certification requirements. The Commonwealth does not accept responsibility for the accuracy or completeness of this plan, its fitness for a particular purpose, or compliance with any regulatory requirements and standards. Further, the Commonwealth also disclaims liability, to the extent permitted by law, for any liabilities, losses, damages and costs arising from any reliance on the contents of this plan.	DESIGN Telopea House DESIGNED FOR Adelaide Technical drawings should be read with the Telopea House Adelaide 'Design Options' document which includes building specifications and rating information.	DETAILS Drawing title: Elevation Scale: 1:100 Paper size: A3 Drawing number: 8/12 Date issued: March 2020 Project stage: Preliminary
--	--	---	---



01 | SECTION AA
1:100

TELOPEA HOUSE

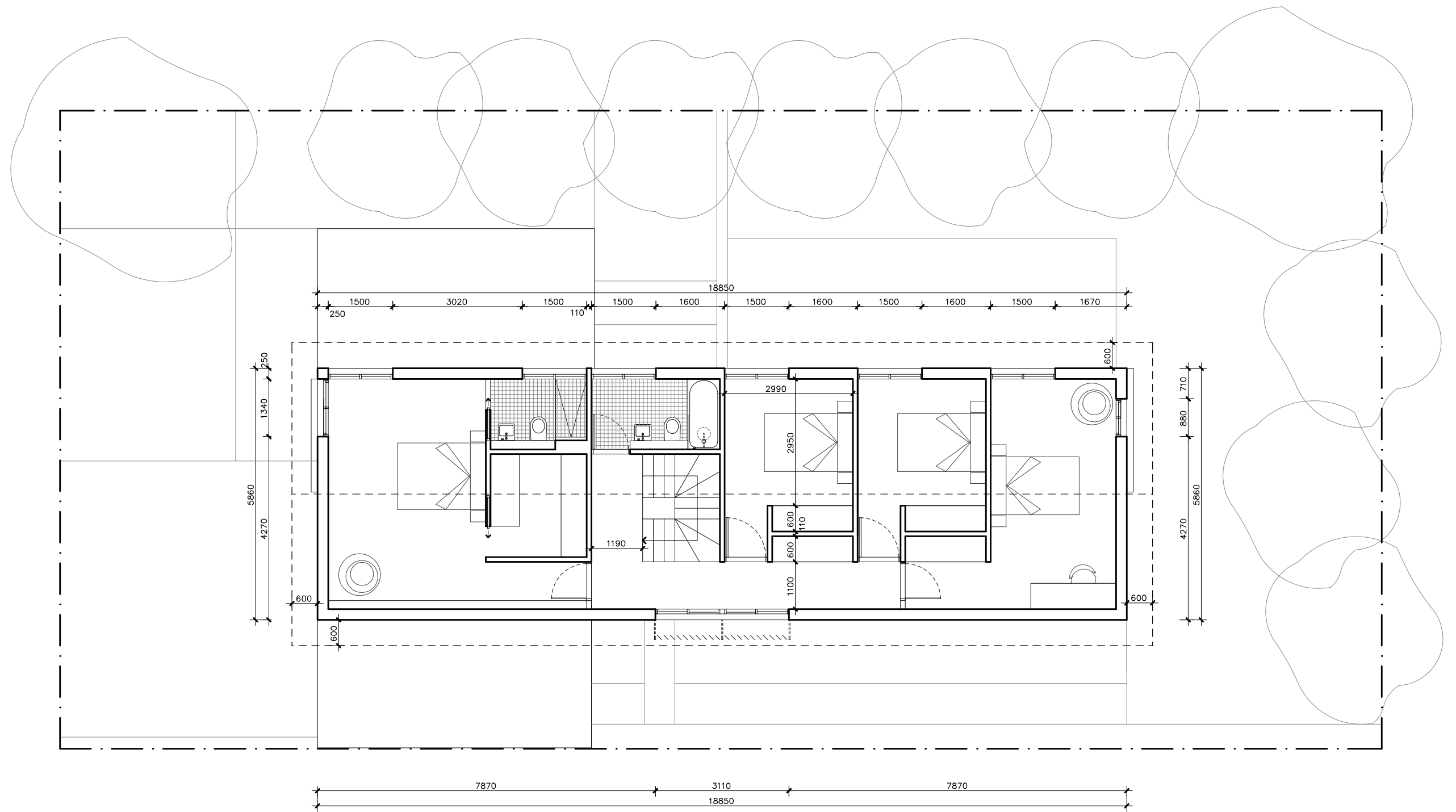
LEGEND N/A	PROJECT			DESIGN Telopea House DESIGNED FOR Adelaide Technical drawings should be read with the Telopea House Adelaide 'Design Options' document which includes building specifications and rating information.	DETAILS Drawing title: Section Scale: 1:100 Paper size: A3 Drawing number: 9/12 Date issued: March 2020 Project stage: Preliminary
	DISCLAIMER This house plan is a guide only. It does not constitute legal or other professional advice. You should seek legal or other professional advice in relation to your specific circumstances before adopting any recommendation made within it e.g. advice on structural engineering or building certification requirements. The Commonwealth does not accept responsibility for the accuracy or completeness of this plan, its fitness for a particular purpose, or compliance with any regulatory requirements and standards. Further, the Commonwealth also disclaims liability, to the extent permitted by law, for any liabilities, losses, damages and costs arising from any reliance on the contents of this plan.				







TELOPEA HOUSE

LEGEND N/A	PROJECT <div>Australian Government</div> <div>YourHome Australia's guide to environmentally sustainable homes</div> <div>Design For Place</div>	DESIGN Telopea House DESIGNED FOR Adelaide	DETAILS Drawing title: Ground Floor Wall Setout Plan
	DISCLAIMER <p>This house plan is a guide only. It does not constitute legal or other professional advice. You should seek legal or other professional advice in relation to your specific circumstances before adopting any recommendation made within it e.g. advice on structural engineering or building certification requirements. The Commonwealth does not accept responsibility for the accuracy or completeness of this plan, its fitness for a particular purpose, or compliance with any regulatory requirements and standards. Further, the Commonwealth also disclaims liability, to the extent permitted by law, for any liabilities, losses, damages and costs arising from any reliance on the contents of this plan.</p>	Technical drawings should be read with the Telopea House Adelaide 'Design Options' document which includes building specifications and rating information.	Scale: 1:100 Paper size: A3 Drawing number: 10/12 Date issued: March 2020 Project stage: Preliminary







TELOPEA HOUSE

LEGEND N/A	PROJECT  Australian Government  YourHome Australia's guide to environmentally sustainable homes  Design For Place	DESIGN Telopea House DESIGNED FOR Adelaide	DETAILS Drawing title: First Floor Wall Setout Plan Scale: 1:100 Paper size: A3
	DISCLAIMER This house plan is a guide only. It does not constitute legal or other professional advice. You should seek legal or other professional advice in relation to your specific circumstances before adopting any recommendation made within it e.g. advice on structural engineering or building certification requirements. The Commonwealth does not accept responsibility for the accuracy or completeness of this plan, its fitness for a particular purpose, or compliance with any regulatory requirements and standards. Further, the Commonwealth also disclaims liability, to the extent permitted by law, for any liabilities, losses, damages and costs arising from any reliance on the contents of this plan.	Technical drawings should be read with the Telopea House Adelaide 'Design Options' document which includes building specifications and rating information.	Drawing number: 11/12 Date issued: March 2020 Project stage: Preliminary 

REFERENCE	HEIGHT	WIDTH	TYPE	NOTES
D1	2250mm	1000mm	Solid door	800mm Eave
D2	2250mm	820mm	Solid door	
D3	2250mm	820mm	Solid door	
W1	1050mm	720mm	Fixed window	800mm Eave
W2	1050mm	1500mm	Fixed / casement window	600mm Sun hood See elevations for breakdown of opening types
W3	1050mm	1500mm	Fixed / casement window	600mm Eave See elevations for breakdown of opening types
HD1	2250mm	920mm	Glazed hinged door	600mm Eave
SD2	2250mm	2850mm	Glazed sliding door	600mm Eave
SD3	2250mm	2850mm	Glazed sliding door	600mm Eave
W4	2250mm	880mm	Fixed window	External sliding sun screen
W5	600mm	2850mm	Fixed / casement window	See elevations for breakdown of opening types
W6	1650mm	1500mm	Fixed / casement window	600mm Eave See elevations for breakdown of opening types
W7	1650mm	1500mm	Fixed / casement window	600mm Eave See elevations for breakdown of opening types
W8	1650mm	1500mm	Fixed / casement window	600mm Eave See elevations for breakdown of opening types
W9	1650mm	1500mm	Fixed / casement window	600mm Eave See elevations for breakdown of opening types
W10	1650mm	1500mm	Fixed / casement window	600mm Eave See elevations for breakdown of opening types
W11	1650mm	1500mm	Fixed / casement window	600mm Eave See elevations for breakdown of opening types
W12	1650mm	880mm	Sliding window	External sliding sun screen and 600mm Eave
W13	1650mm	1500mm	Fixed / casement window	600mm Eave See elevations for breakdown of opening types
W14	1650mm	1500mm	Fixed / casement window	600mm Eave See elevations for breakdown of opening types
W15	1650mm	1340mm	Sliding window	External sliding sun screen and 600mm Eave
W16	900mm	600mm	Casement window	Frosted

TELOPEA HOUSE

LEGEND N/A	PROJECT  Australian Government  YourHome Australia's guide to environmentally sustainable homes  Design For Place	DESIGN Telopea House	DETAILS Drawing title: Window and Door Schedule Scale: N/A Paper size: A3 Drawing number: 12/12 Date issued: March 2020 Project stage: Preliminary
	DISCLAIMER This house plan is a guide only. It does not constitute legal or other professional advice. You should seek legal or other professional advice in relation to your specific circumstances before adopting any recommendation made within it e.g. advice on structural engineering or building certification requirements. The Commonwealth does not accept responsibility for the accuracy or completeness of this plan, its fitness for a particular purpose, or compliance with any regulatory requirements and standards. Further, the Commonwealth also disclaims liability, to the extent permitted by law, for any liabilities, losses, damages and costs arising from any reliance on the contents of this plan.	DESIGNED FOR Adelaide Technical drawings should be read with the Telopea House Adelaide 'Design Options' document which includes building specifications and rating information.	