



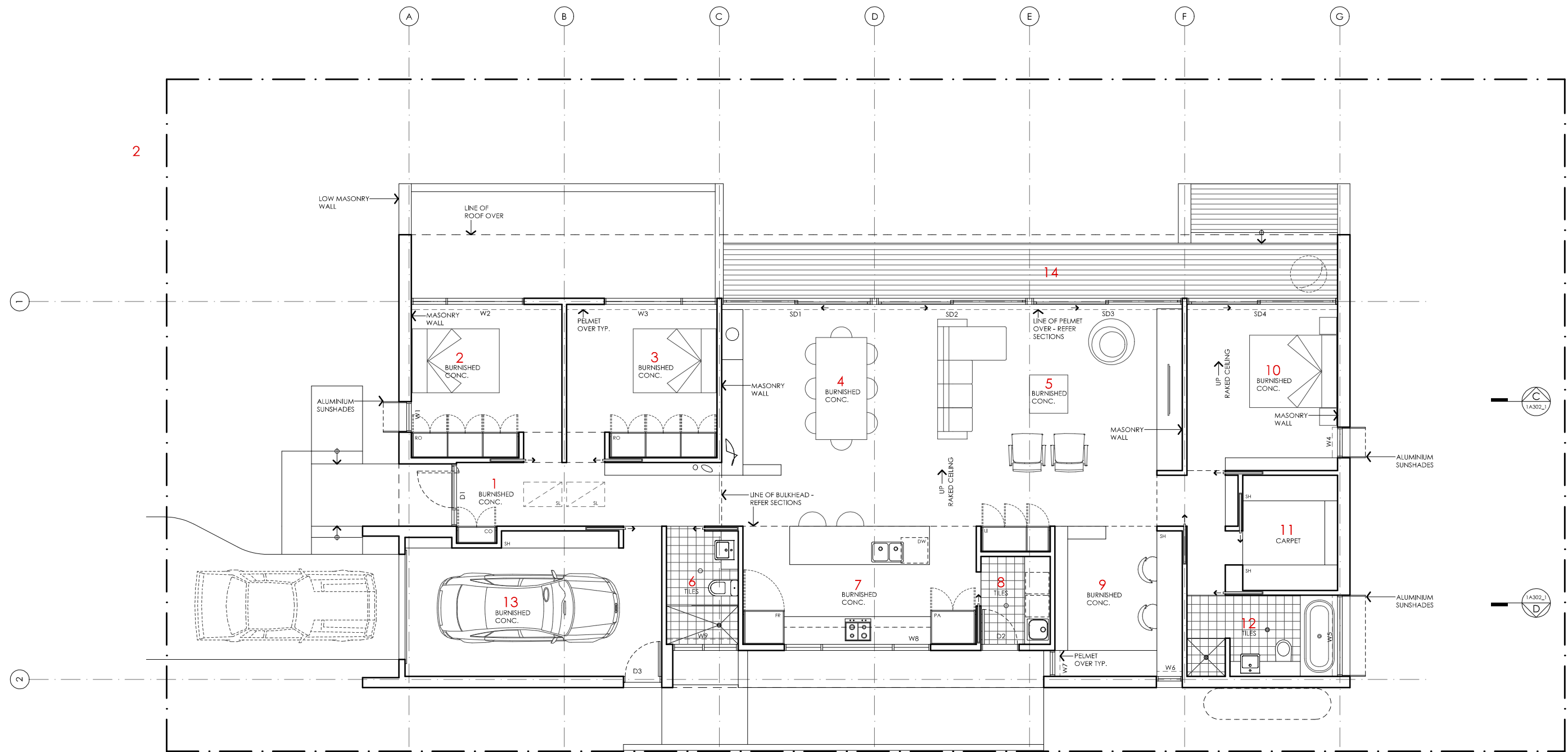


AREA  
GROUND FLOOR LIVING 172 m<sup>2</sup>  
GARAGE 22 m<sup>2</sup>  
TOTAL GFA 194 m<sup>2</sup>  
GROUND FLOOR DECKS 30 m<sup>2</sup>  
INDICATIVE BLOCK SIZE 544 m<sup>2</sup>  
  
NOTE: GFA CALCULATIONS DO NOT  
INCLUDE DECKS, CARPORTS,  
COURTYARDS, VERANDAHS OR NIB WALLS

# BANKSIA HOUSE

LEGEND N/A	PROJECT <div> Australian Government</div> <div> YourHome Australia's guide to environmentally sustainable homes</div> <div> Design For Place</div>	DESIGN Banksia House	DETAILS
	DISCLAIMER <p>This house plan is a guide only. It does not constitute legal or other professional advice. You should seek legal or other professional advice in relation to your specific circumstances before adopting any recommendation made within it e.g. advice on structural engineering or building certification requirements. The Commonwealth does not accept responsibility for the accuracy or completeness of this plan, its fitness for a particular purpose, or compliance with any regulatory requirements and standards. Further, the Commonwealth also disclaims liability, to the extent permitted by law, for any liabilities, losses, damages and costs arising from any reliance on the contents of this plan.</p>	DESIGNED FOR Melbourne <p>Technical drawings should be read with the Banksia House Melbourne 'Design Options' document which includes building specifications and rating information.</p>	<div>Drawing title: Site Plan</div> <div>Scale: 1:200</div> <div>Paper size: A3</div> <div>Drawing number: 1/13</div> <div>Date issued: March 2020</div> <div>Project stage: Preliminary</div> <div></div>



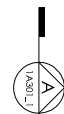
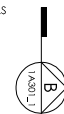
KEY

- 1 ENTRY
- 2 BEDROOM 3
- 3 BEDROOM 2
- 4 DINING
- 5 LIVING
- 6 BATHROOM
- 7 KITCHEN
- 8 LAUNDRY
- 9 STUDY
- 10 BEDROOM 1
- 11 WALK IN ROBE
- 12 ENSUITE
- 13 GARAGE
- 14 DECK

AREA

GROUND FLOOR LIVING	172 m <sup>2</sup>
GARAGE	22 m <sup>2</sup>
<b>TOTAL GFA</b>	<b>194 m<sup>2</sup></b>
GROUND FLOOR DECKS	30 m <sup>2</sup>
INDICATIVE BLOCK SIZE	544 m <sup>2</sup>

NOTE: GFA CALCULATIONS DO NOT INCLUDE DECKS, CARPORTS, COURTYARDS, VERANDAHS OR NIB WALLS



# BANKSIA HOUSE

LEGEND

N/A

PROJECT



DESIGN

**Banksia House**

DESIGNED FOR

**Melbourne**

Technical drawings should be read with the Banksia House Melbourne 'Design Options' document which includes building specifications and rating information.

DETAILS

**Drawing title:** Floor Plan

**Scale:** 1:100

**Paper size:** A3

**Drawing number:** 2/13

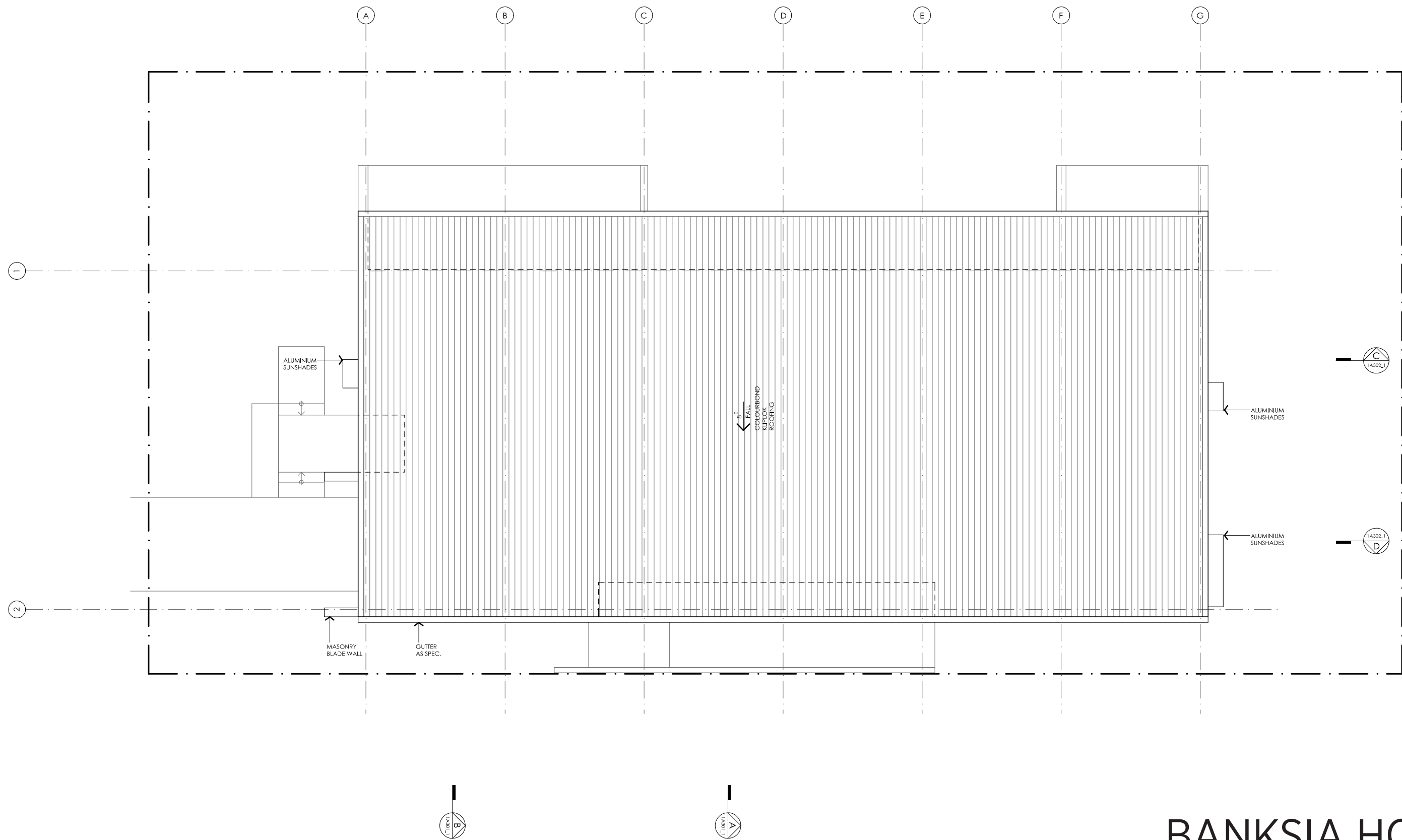
**Date issued:** March 2020

**Project stage:** Preliminary



DISCLAIMER

This house plan is a guide only. It does not constitute legal or other professional advice. You should seek legal or other professional advice in relation to your specific circumstances before adopting any recommendation made within it e.g. advice on structural engineering or building certification requirements. The Commonwealth does not accept responsibility for the accuracy or completeness of this plan, its fitness for a particular purpose, or compliance with any regulatory requirements and standards. Further, the Commonwealth also disclaims liability, to the extent permitted by law, for any liabilities, losses, damages and costs arising from any reliance on the contents of this plan.



# BANKSIA HOUSE

LEGEND  
N/A

PROJECT



DESIGN

**Banksia House**

**DESIGNED FOR  
Melbourne**

Technical drawings should be read with the Banksia House Melbourne 'Design Options' document which includes building specifications and rating information.

DETAILS

**Drawing title:** Roof Plan

**Scale:** 1:100

**Paper size:** A3

**Drawing number:** 3/13

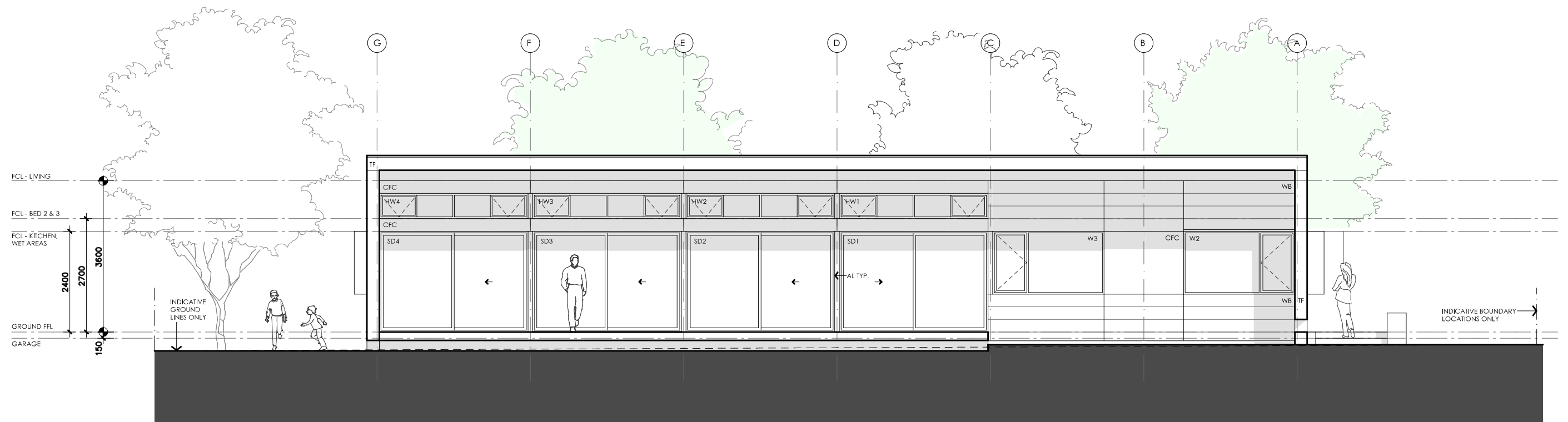
**Date issued:** March 2020

**Project stage:** Preliminary



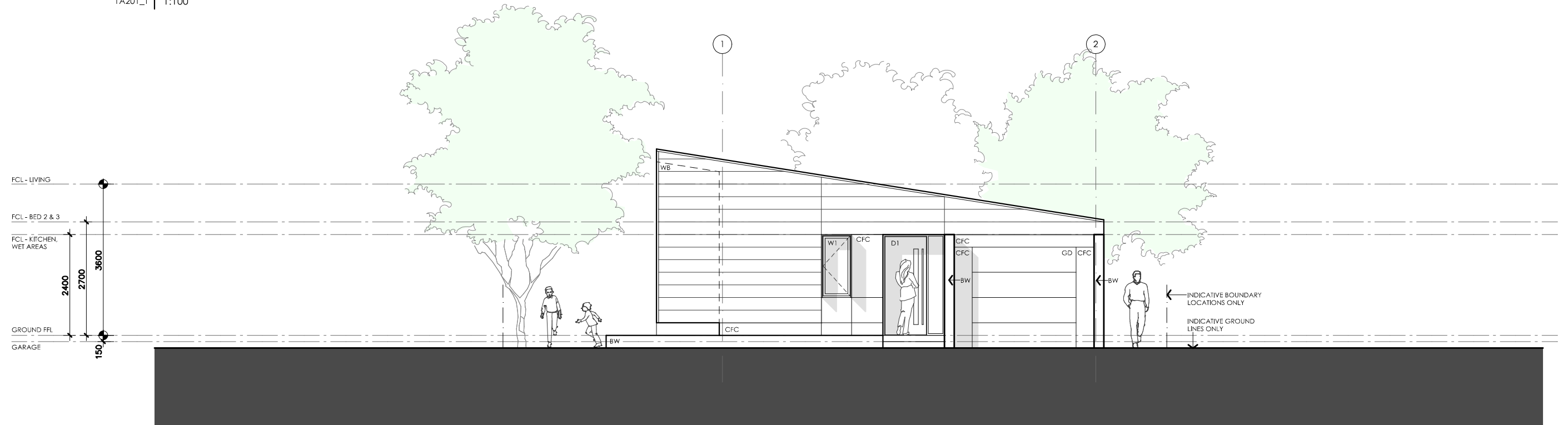
DISCLAIMER

This house plan is a guide only. It does not constitute legal or other professional advice. You should seek legal or other professional advice in relation to your specific circumstances before adopting any recommendation made within it e.g. advice on structural engineering or building certification requirements. The Commonwealth does not accept responsibility for the accuracy or completeness of this plan, its fitness for a particular purpose, or compliance with any regulatory requirements and standards. Further, the Commonwealth also disclaims liability, to the extent permitted by law, for any liabilities, losses, damages and costs arising from any reliance on the contents of this plan.



01 NORTH ELEVATION

1A201\_1 1:100



02 WEST ELEVATION

1A201\_1 1:100

# BANKSIA HOUSE

## LEGEND

TF	TIMBER FASCIA PROFILE/COLOUR AS SPEC
WB	WEATHERBOARD LINING ON TIMBER FRAMING & BATTENS PROFILE/COLOUR AS SPEC
BW	FACE BRICK WORK BRICK AS SPEC
CFC	COMPRESSED FC CLADDING ON TIMBER FRAMING & BATTENS PROFILE/COLOUR AS SPEC
SB	STEEL BEAM PAINT FINISH AS SPEC.
GD	GARAGE DOOR MAKE & COLOUR AS SPEC
AL	ALUMINIUM COVER PANEL - FOLDED FINISH/COLOUR TO MATCH WINDOW FRAMES

## PROJECT



Australian Government



## DISCLAIMER

This house plan is a guide only. It does not constitute legal or other professional advice. You should seek legal or other professional advice in relation to your specific circumstances before adopting any recommendation made within it e.g. advice on structural engineering or building certification requirements. The Commonwealth does not accept responsibility for the accuracy or completeness of this plan, its fitness for a particular purpose, or compliance with any regulatory requirements and standards. Further, the Commonwealth also disclaims liability, to the extent permitted by law, for any liabilities, losses, damages and costs arising from any reliance on the contents of this plan.

## DESIGN

**Banksia House**

**DESIGNED FOR  
Melbourne**

Technical drawings should be read with the Banksia House Melbourne 'Design Options' document which includes building specifications and rating information.

## DETAILS

**Drawing title:** Elevations

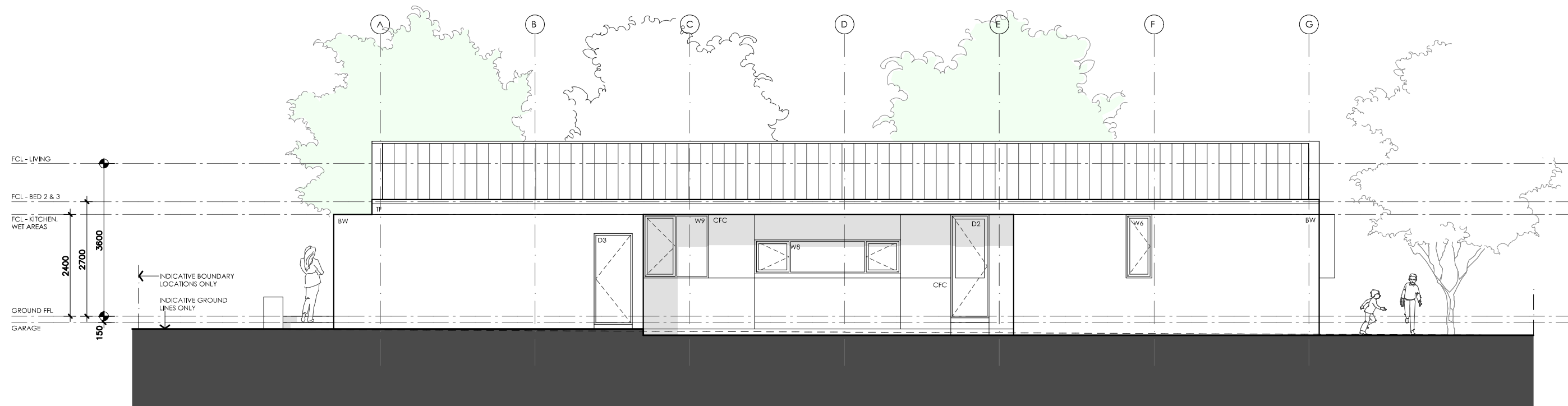
**Scale:** 1:100

**Paper size:** A3

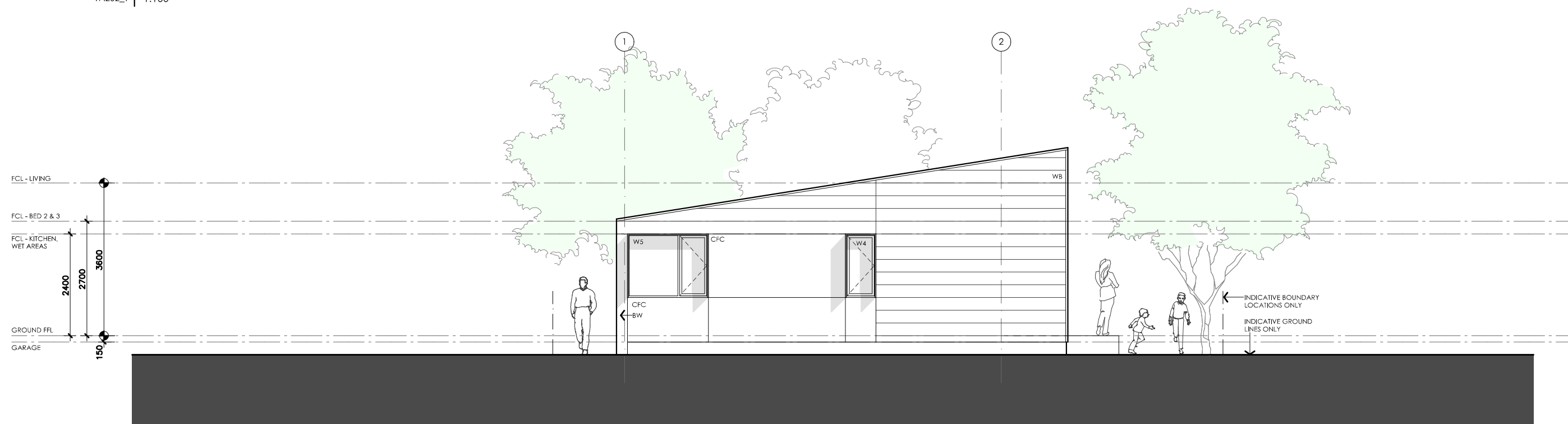
**Drawing number:** 4/13

**Date issued:** March 2020

**Project stage:** Preliminary






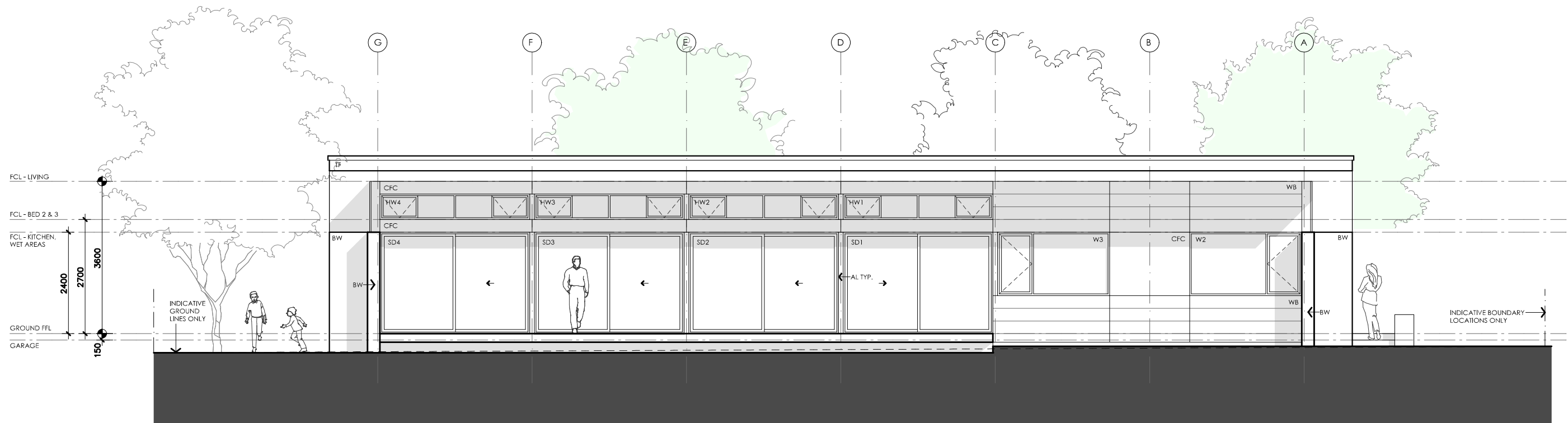
01 | SOUTH ELEVATION  
1A202\_1 1:100



02 | EAST ELEVATION  
1A202\_1 1:100

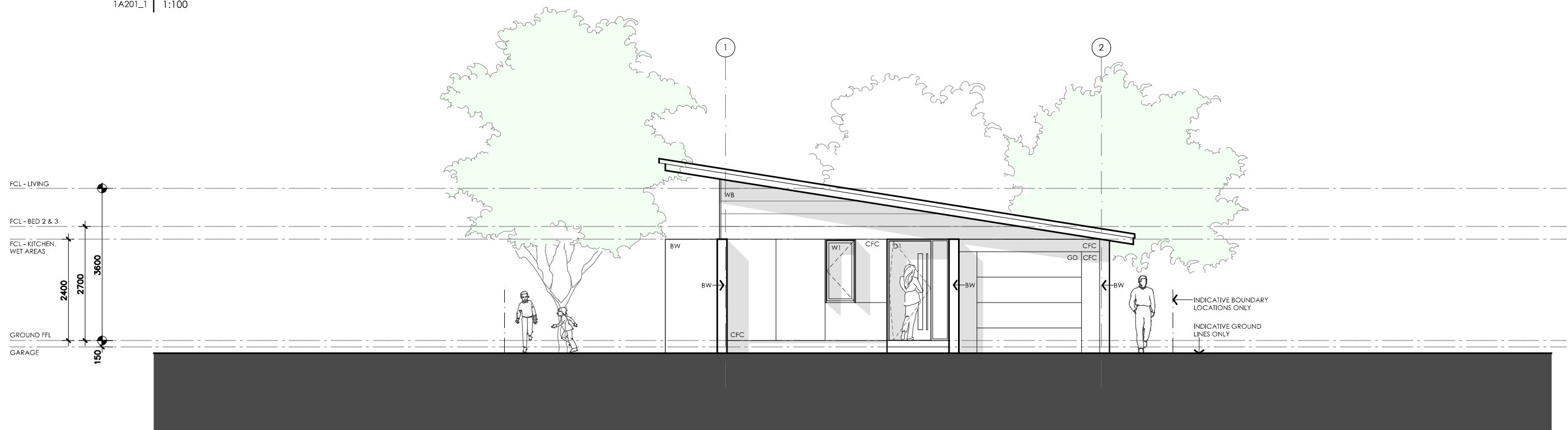
# BANKSIA HOUSE

<p><b>LEGEND</b></p> <p>TF TIMBER FASCIA PROFILE/COLOUR AS SPEC</p> <p>WB WEATHERBOARD LINING ON TIMBER FRAMING &amp; BATTENS PROFILE/COLOUR AS SPEC</p> <p>BW FACE BRICK WORK BRICK AS SPEC</p> <p>CFC COMPRESSED FC CLADDING ON TIMBER FRAMING &amp; BATTENS PROFILE/COLOUR AS SPEC</p> <p>SB STEEL BEAM PAINT FINISH AS SPEC.</p> <p>GD GARAGE DOOR MAKE &amp; COLOUR AS SPEC</p> <p>AL ALUMINIUM COVER PANEL - FOLDED FINISH/COLOUR TO MATCH WINDOW FRAMES</p>	<p><b>PROJECT</b></p> <p> <b>Australian Government</b></p> <p> <b>YourHome</b> Australia's guide to environmentally sustainable homes</p> <p> <b>Design For Place</b></p> <p><b>DISCLAIMER</b></p> <p>This house plan is a guide only. It does not constitute legal or other professional advice. You should seek legal or other professional advice in relation to your specific circumstances before adopting any recommendation made within it e.g. advice on structural engineering or building certification requirements. The Commonwealth does not accept responsibility for the accuracy or completeness of this plan, its fitness for a particular purpose, or compliance with any regulatory requirements and standards. Further, the Commonwealth also disclaims liability, to the extent permitted by law, for any liabilities, losses, damages and costs arising from any reliance on the contents of this plan.</p>	<p><b>DESIGN</b></p> <p><b>Banksia House</b></p> <p><b>DESIGNED FOR</b></p> <p><b>Melbourne</b></p> <p>Technical drawings should be read with the Banksia House Melbourne 'Design Options' document which includes building specifications and rating information.</p>	<p><b>DETAILS</b></p> <p><b>Drawing title:</b> Elevations</p> <p><b>Scale:</b> 1:100</p> <p><b>Paper size:</b> A3</p> <p><b>Drawing number:</b> 5/13</p> <p><b>Date issued:</b> March 2020</p> <p><b>Project stage:</b> Preliminary</p>
--	--	--	---



## 01 NORTH ELEVATION

1A201\_1 1:100



## 02 WEST ELEVATION

1A201\_1 1:100

# BANKSIA HOUSE

### LEGEND

TF	TIMBER FASCIA PROFILE/COLOUR AS SPEC
WB	WEATHERBOARD LINING ON TIMBER FRAMING & BATTENS PROFILE/COLOUR AS SPEC
BW	FACE BRICK WORK BRICK AS SPEC
CFC	COMPRESSED FC CLADDING ON TIMBER FRAMING & BATTENS PROFILE/COLOUR AS SPEC
SB	STEEL BEAM PAINT FINISH AS SPEC.
GD	GARAGE DOOR MAKE & COLOUR AS SPEC
AL	ALUMINIUM COVER PANEL - FOLDED FINISH/COLOUR TO MATCH WINDOW FRAMES

### PROJECT



Australian Government



### DISCLAIMER

This house plan is a guide only. It does not constitute legal or other professional advice. You should seek legal or other professional advice in relation to your specific circumstances before adopting any recommendation made within it e.g. advice on structural engineering or building certification requirements. The Commonwealth does not accept responsibility for the accuracy or completeness of this plan, its fitness for a particular purpose, or compliance with any regulatory requirements and standards. Further, the Commonwealth also disclaims liability, to the extent permitted by law, for any liabilities, losses, damages and costs arising from any reliance on the contents of this plan.

### DESIGN

**Banksia House**

**DESIGNED FOR  
Melbourne**

Technical drawings should be read with the Banksia House Melbourne 'Design Options' document which includes building specifications and rating information.

### DETAILS

**Drawing title:** Elevations – alt. roof line

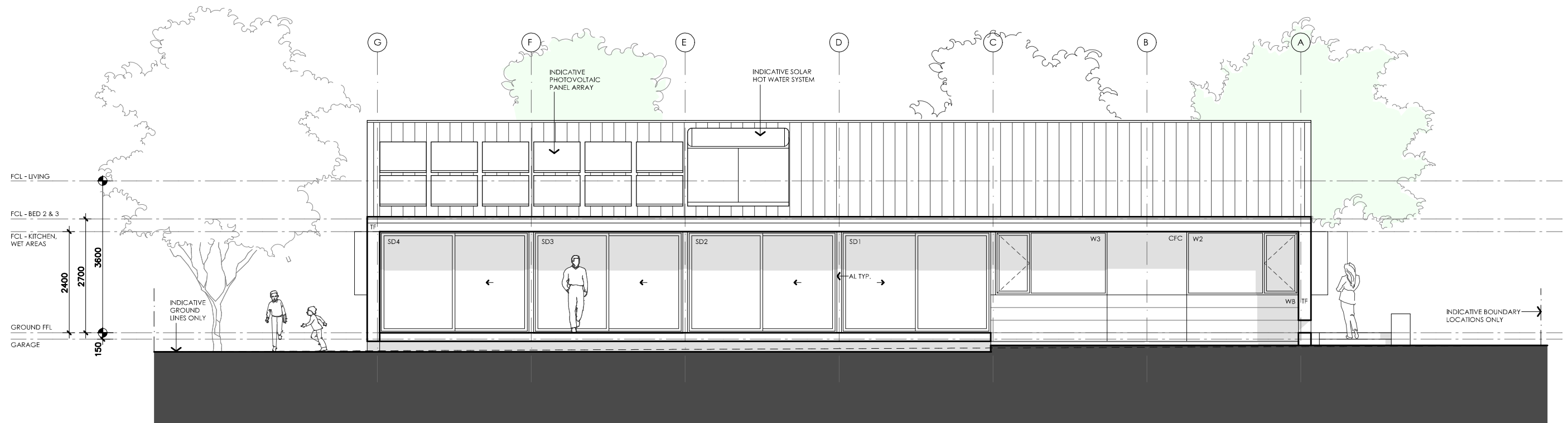
**Scale:** 1:100

**Paper size:** A3

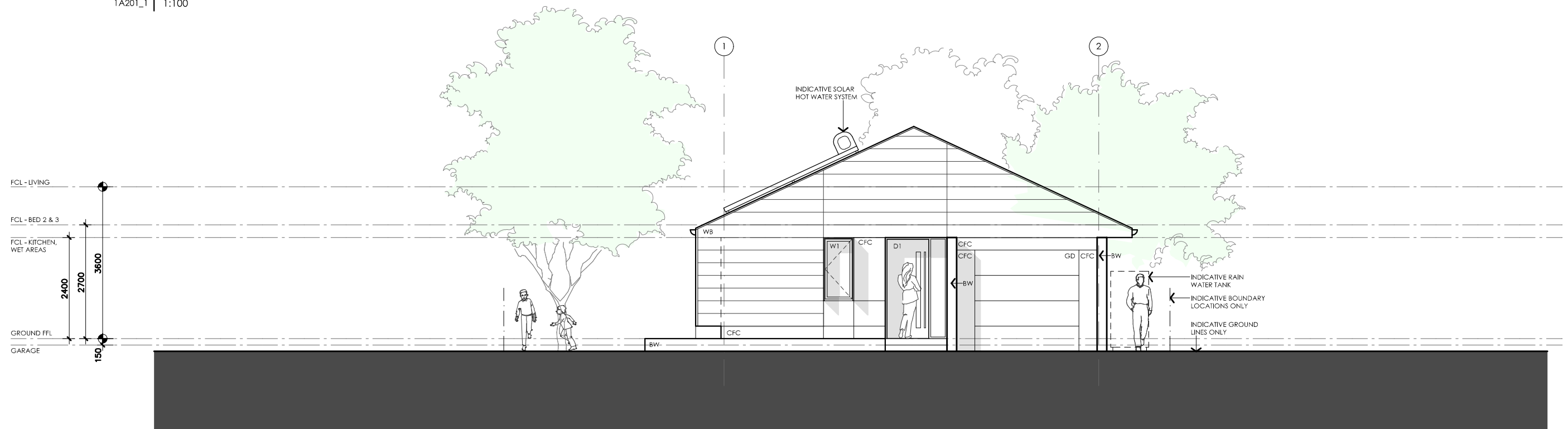
**Drawing number:** 6/13

**Date issued:** March 2020

**Project stage:** Preliminary






01 NORTH ELEVATION  
1A201\_1 1:100

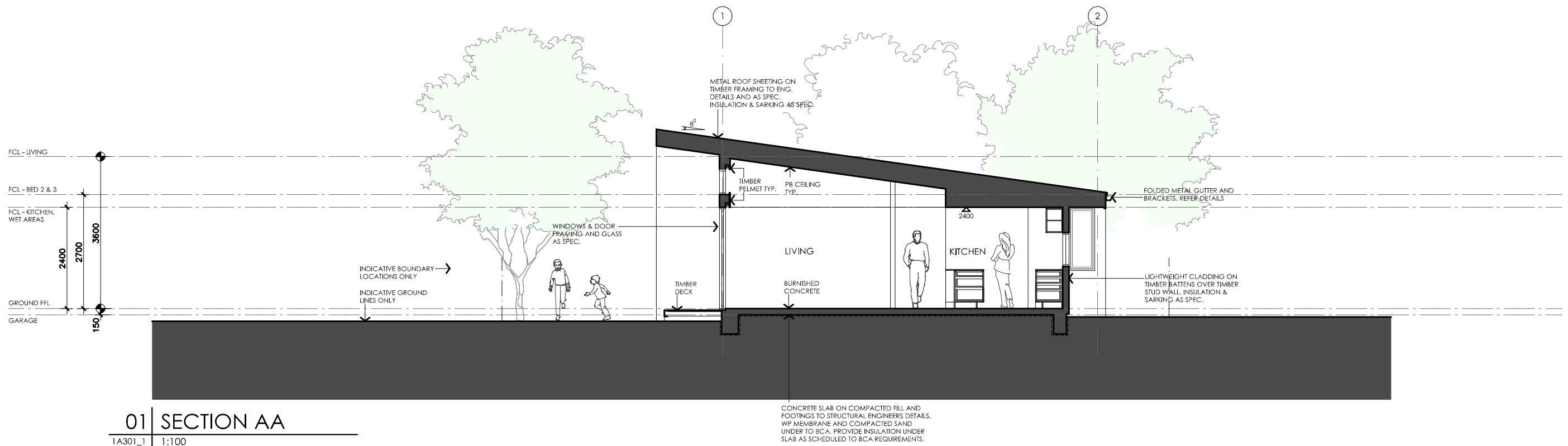


02 WEST ELEVATION  
1A201\_1 1:100

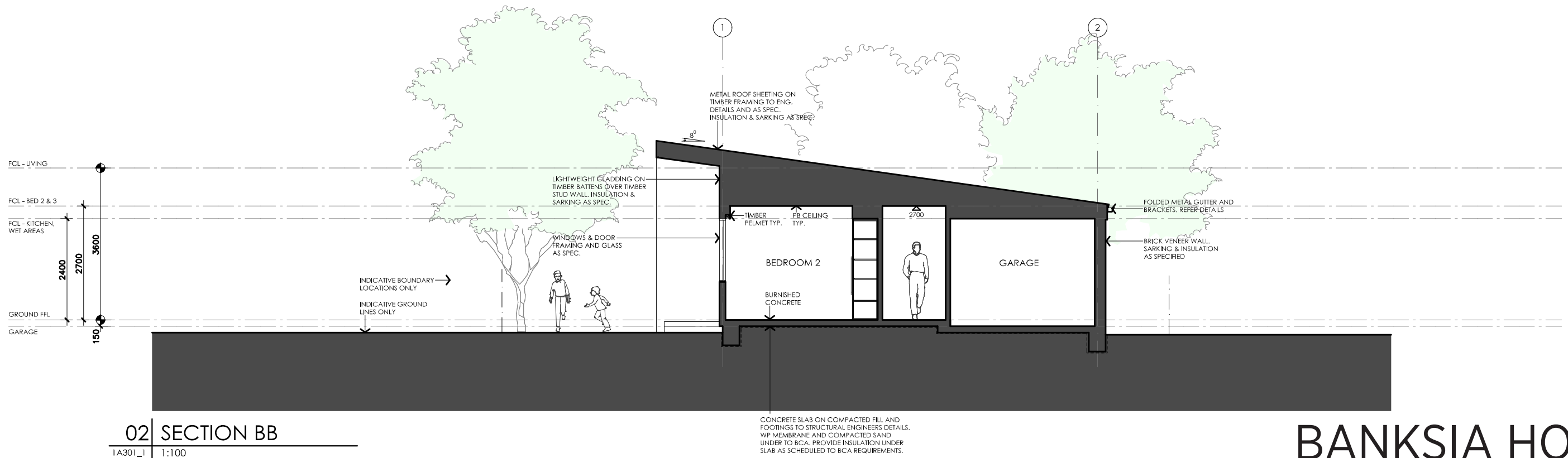
# BANKSIA HOUSE

<p><b>LEGEND</b></p> <p>TF TIMBER FASCIA PROFILE/COLOUR AS SPEC</p> <p>WB WEATHERBOARD LINING ON TIMBER FRAMING &amp; BATTENS PROFILE/COLOUR AS SPEC</p> <p>BW FACE BRICK WORK BRICK AS SPEC</p> <p>CFC COMPRESSED FC CLADDING ON TIMBER FRAMING &amp; BATTENS PROFILE/COLOUR AS SPEC</p> <p>SB STEEL BEAM PAINT FINISH AS SPEC.</p> <p>GD GARAGE DOOR MAKE &amp; COLOUR AS SPEC</p> <p>AL ALUMINIUM COVER PANEL - FOLDED FINISH/COLOUR TO MATCH WINDOW FRAMES</p>	<p><b>PROJECT</b></p> <p> Australian Government</p> <p> YourHome Australia's guide to environmentally sustainable homes</p> <p> Design For Place</p> <p><b>DISCLAIMER</b></p> <p>This house plan is a guide only. It does not constitute legal or other professional advice. You should seek legal or other professional advice in relation to your specific circumstances before adopting any recommendation made within it e.g. advice on structural engineering or building certification requirements. The Commonwealth does not accept responsibility for the accuracy or completeness of this plan, its fitness for a particular purpose, or compliance with any regulatory requirements and standards. Further, the Commonwealth also disclaims liability, to the extent permitted by law, for any liabilities, losses, damages and costs arising from any reliance on the contents of this plan.</p>	<p><b>DESIGN</b></p> <p><b>Banksia House</b></p> <p><b>DESIGNED FOR</b></p> <p><b>Melbourne</b></p> <p>Technical drawings should be read with the Banksia House Melbourne 'Design Options' document which includes building specifications and rating information.</p>	<p><b>DETAILS</b></p> <p><b>Drawing title:</b> Elevations – alt. roof line</p> <p><b>Scale:</b> 1:100</p> <p><b>Paper size:</b> A3</p> <p><b>Drawing number:</b> 7/13</p> <p><b>Date issued:</b> March 2020</p> <p><b>Project stage:</b> Preliminary</p>
--	---	--	--






01 | SECTION AA  
1A301\_1 | 1:100

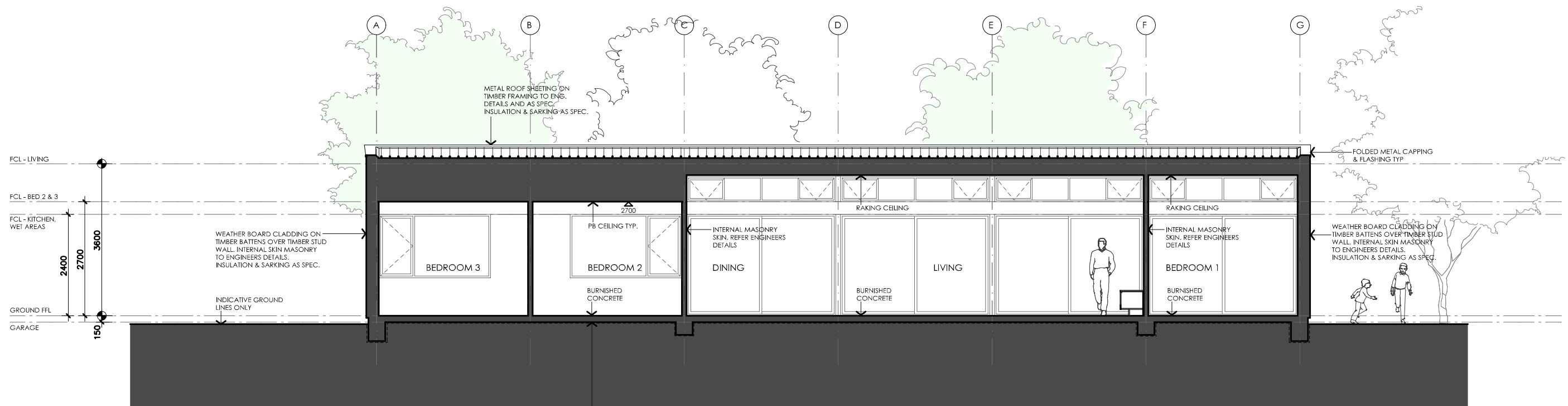


02 | SECTION BB  
1A301\_1 | 1:100

# BANKSIA HOUSE

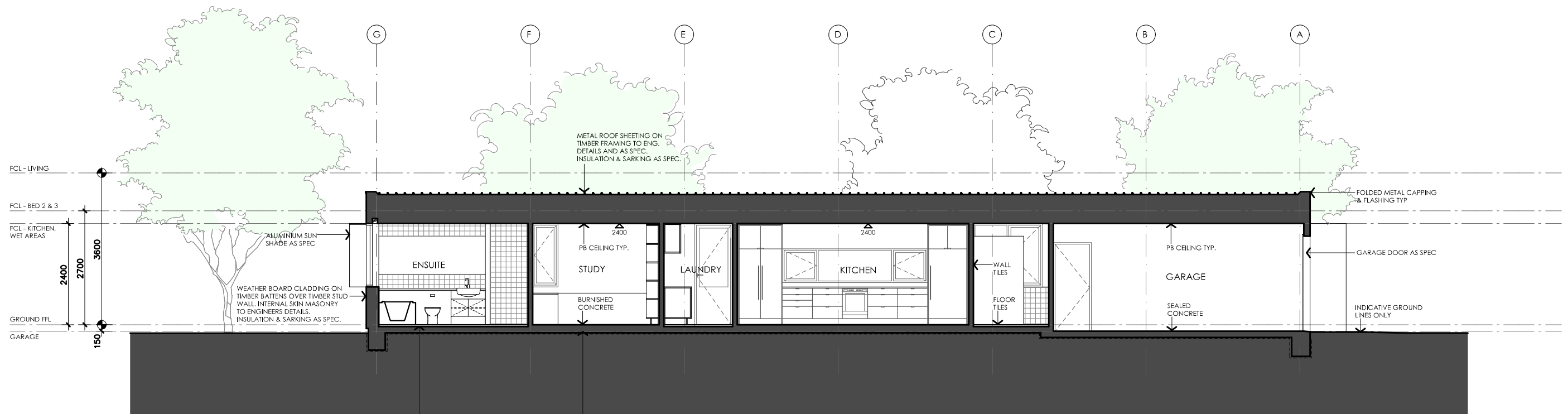
<b>LEGEND</b> <ul style="list-style-type: none"><li>TF TIMBER FASCIA, PROFILE/COLOUR AS SPEC</li><li>WB WEATHERBOARD LINING ON TIMBER FRAMING &amp; BATTENS, PROFILE/COLOUR AS SPEC</li><li>BW FACE BRICK WORK, BRICK AS SPEC</li><li>CFC COMPRESSED FC CLADDING ON TIMBER FRAMING &amp; BATTENS, PROFILE/COLOUR AS SPEC</li><li>SB STEEL BEAM, PAINT FINISH AS SPEC.</li><li>GD GARAGE DOOR, MAKE &amp; COLOUR AS SPEC</li><li>AL ALUMINIUM COVER PANEL - FOLDED FINISH/COLOUR TO MATCH WINDOW FRAMES</li></ul>	<b>PROJECT</b> <div><b>Australian Government</b></div> <div><b>YourHome</b> Australia's guide to environmentally sustainable homes</div> <div><b>Design For Place</b></div>	<b>DESIGN</b> <b>Banksia House</b>  <b>DESIGNED FOR</b> <b>Melbourne</b>  Technical drawings should be read with the Banksia House Melbourne 'Design Options' document which includes building specifications and rating information.	<b>DETAILS</b> <b>Drawing title:</b> Sections <b>Scale:</b> 1:100 <b>Paper size:</b> A3 <b>Drawing number:</b> 8/13 <b>Date issued:</b> March 2020 <b>Project stage:</b> Preliminary
<b>DISCLAIMER</b> <p>This house plan is a guide only. It does not constitute legal or other professional advice. You should seek legal or other professional advice in relation to your specific circumstances before adopting any recommendation made within it e.g. advice on structural engineering or building certification requirements. The Commonwealth does not accept responsibility for the accuracy or completeness of this plan, its fitness for a particular purpose, or compliance with any regulatory requirements and standards. Further, the Commonwealth also disclaims liability, to the extent permitted by law, for any liabilities, losses, damages and costs arising from any reliance on the contents of this plan.</p>			





01 | SECTION CC  
1A302\_1 | 1:100




CONCRETE SLAB ON COMPACTED FILL AND FOOTINGS TO STRUCTURAL ENGINEERS DETAILS. WP MEMBRANE AND COMPACTED SAND UNDER TO BCA. PROVIDE INSULATION UNDER SLAB AS SCHEDULED TO BCA REQUIREMENTS.

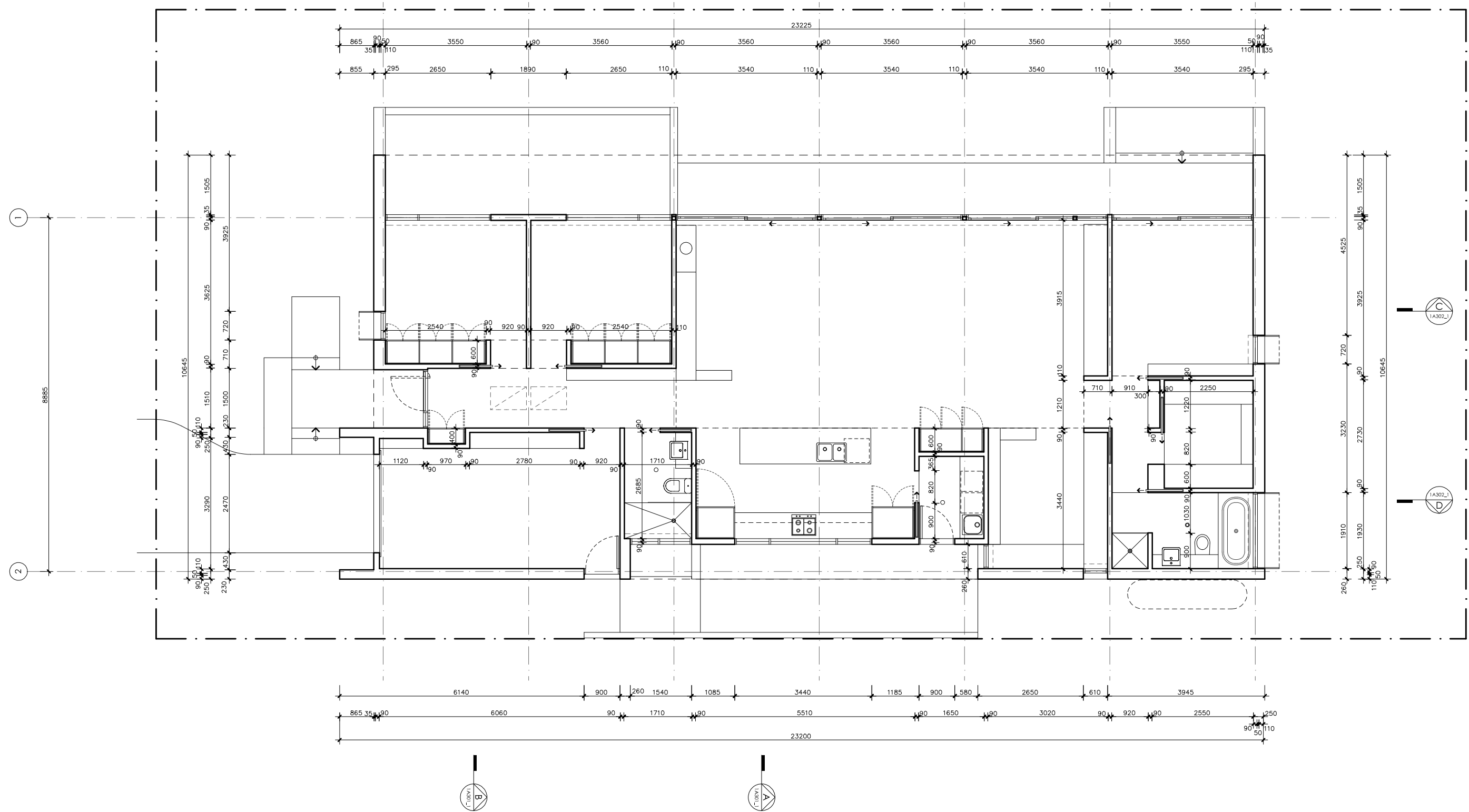


02 | SECTION DD  
1A302\_1 | 1:100





CONCRETE SLAB ON COMPACTED FILL AND FOOTINGS TO STRUCTURAL ENGINEERS DETAILS. WP MEMBRANE AND COMPACTED SAND UNDER TO BCA. PROVIDE INSULATION UNDER SLAB AS SCHEDULED TO BCA REQUIREMENTS.

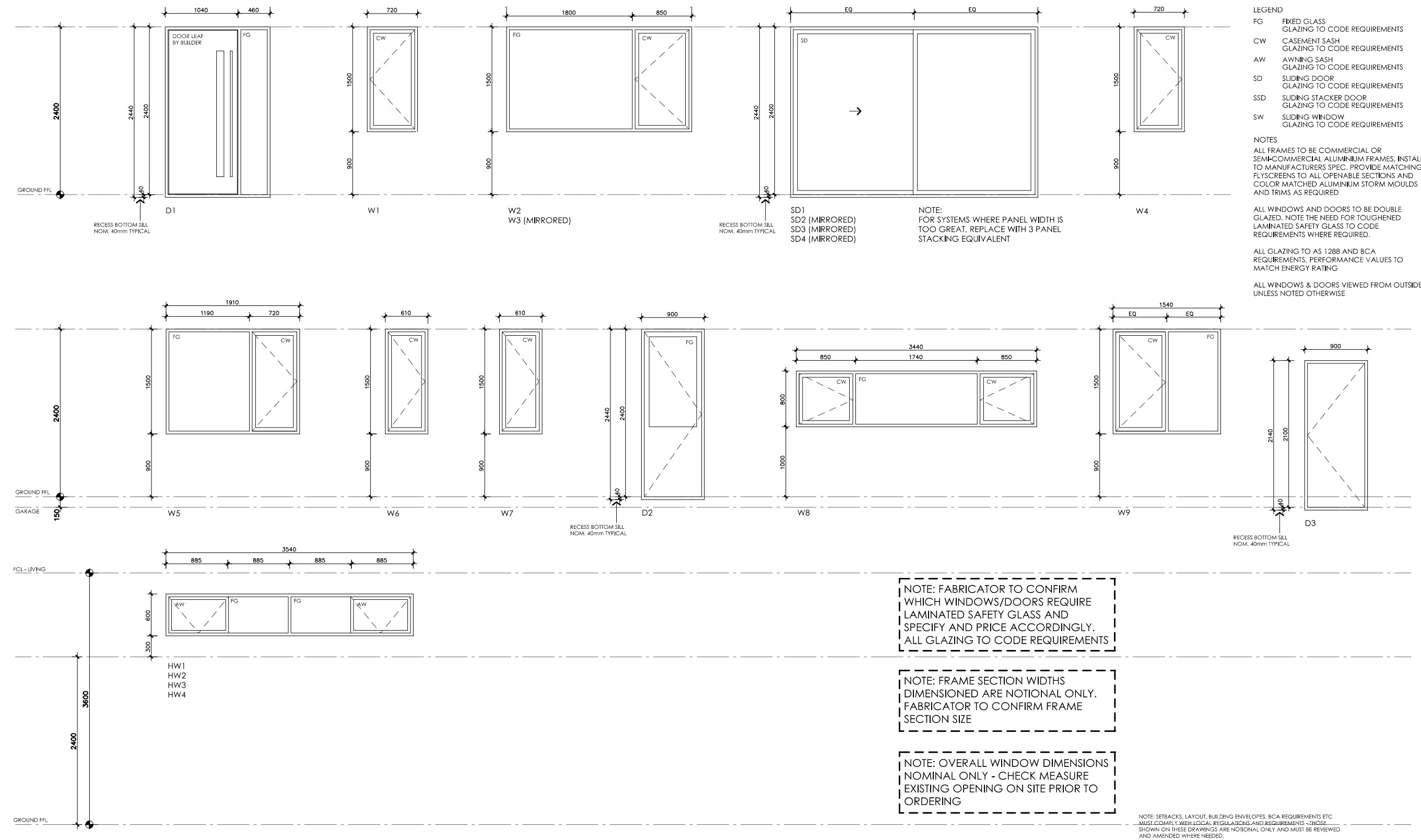
# BANKSIA HOUSE

<p><b>LEGEND</b></p> <p>TF TIMBER FASCIA PROFILE/COLOUR AS SPEC</p> <p>WB WEATHERBOARD LINING ON TIMBER FRAMING &amp; BATTENS PROFILE/COLOUR AS SPEC</p> <p>BW FACE BRICK WORK BRICK AS SPEC</p> <p>CFC COMPRESSED FC CLADDING ON TIMBER FRAMING &amp; BATTENS PROFILE/COLOUR AS SPEC</p> <p>SB STEEL BEAM PAINT FINISH AS SPEC.</p> <p>GD GARAGE DOOR MAKE &amp; COLOUR AS SPEC</p> <p>AL ALUMINIUM COVER PANEL - FOLDED FINISH/COLOUR TO MATCH WINDOW FRAMES</p>	<p><b>PROJECT</b></p> <p> <b>Australian Government</b></p> <p> <b>YourHome</b> Australia's guide to environmentally sustainable homes</p> <p> <b>Design For Place</b></p> <p><b>DISCLAIMER</b></p> <p>This house plan is a guide only. It does not constitute legal or other professional advice. You should seek legal or other professional advice in relation to your specific circumstances before adopting any recommendation made within it e.g. advice on structural engineering or building certification requirements. The Commonwealth does not accept responsibility for the accuracy or completeness of this plan, its fitness for a particular purpose, or compliance with any regulatory requirements and standards. Further, the Commonwealth also disclaims liability, to the extent permitted by law, for any liabilities, losses, damages and costs arising from any reliance on the contents of this plan.</p>	<p><b>DESIGN</b></p> <p><b>Banksia House</b></p> <p><b>DESIGNED FOR</b></p> <p><b>Melbourne</b></p> <p>Technical drawings should be read with the Banksia House Melbourne 'Design Options' document which includes building specifications and rating information.</p>	<p><b>DETAILS</b></p> <p><b>Drawing title:</b> Sections</p> <p><b>Scale:</b> 1:100</p> <p><b>Paper size:</b> A3</p> <p><b>Drawing number:</b> 9/13</p> <p><b>Date issued:</b> March 2020</p> <p><b>Project stage:</b> Preliminary</p>
--	--	--	---




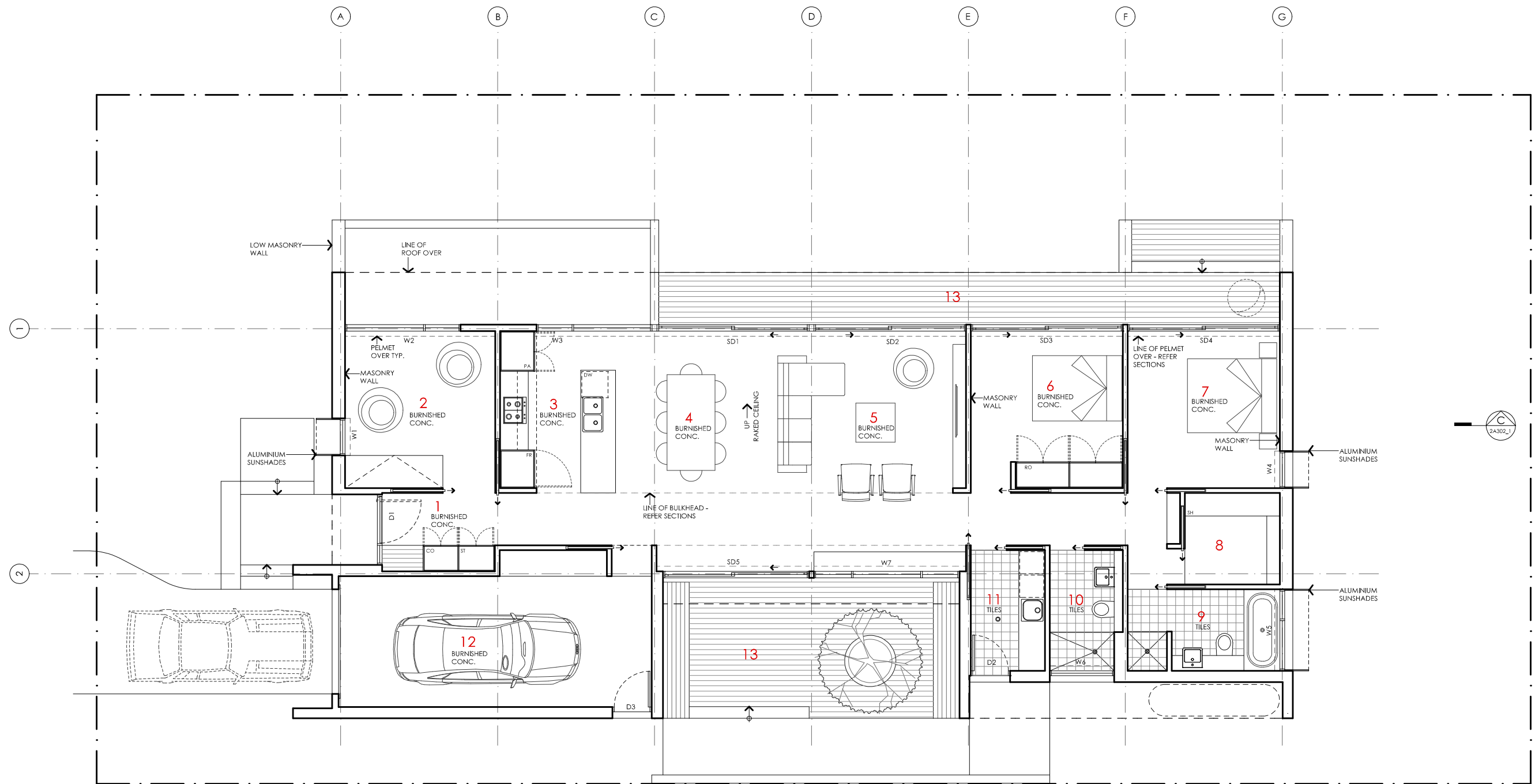
# BANKSIA HOUSE

<b>LEGEND</b> N/A	<b>PROJECT</b> <div><b>Australian Government</b></div> <div><b>YourHome</b> Australia's guide to environmentally sustainable homes</div> <div><b>Design For Place</b></div>	<b>DESIGN</b> <b>Banksia House</b>  <b>DESIGNED FOR</b> <b>Melbourne</b>	<b>DETAILS</b> <b>Drawing title:</b> Wall Setout Plan <b>Scale:</b> 1:100 <b>Paper size:</b> A3
	<b>DISCLAIMER</b> <p>This house plan is a guide only. It does not constitute legal or other professional advice. You should seek legal or other professional advice in relation to your specific circumstances before adopting any recommendation made within it e.g. advice on structural engineering or building certification requirements. The Commonwealth does not accept responsibility for the accuracy or completeness of this plan, its fitness for a particular purpose, or compliance with any regulatory requirements and standards. Further, the Commonwealth also disclaims liability, to the extent permitted by law, for any liabilities, losses, damages and costs arising from any reliance on the contents of this plan.</p>	Technical drawings should be read with the Banksia House Melbourne 'Design Options' document which includes building specifications and rating information.	<b>Drawing number:</b> 10/13 <b>Date issued:</b> March 2020 <b>Project stage:</b> Preliminary <div></div>



# BANKSIA HOUSE

LEGEND  N/A	PROJECT <div> Australian Government</div> <div> YourHome Australia's guide to environmentally sustainable homes</div> <div> Design For Place</div>			DESIGN <b>Banksia House</b>	DETAILS <b>Drawing title:</b> Window Schedule
	DISCLAIMER <p>This house plan is a guide only. It does not constitute legal or other professional advice. You should seek legal or other professional advice in relation to your specific circumstances before adopting any recommendation made within it e.g. advice on structural engineering or building certification requirements. The Commonwealth does not accept responsibility for the accuracy or completeness of this plan, its fitness for a particular purpose, or compliance with any regulatory requirements and standards. Further, the Commonwealth also disclaims liability, to the extent permitted by law, for any liabilities, losses, damages and costs arising from any reliance on the contents of this plan.</p>			DESIGNED FOR <b>Melbourne</b>  Technical drawings should be read with the Banksia House Melbourne 'Design Options' document which includes building specifications and rating information.	<b>Scale:</b> 1:100  <b>Paper size:</b> A3  <b>Drawing number:</b> 11/13  <b>Date issued:</b> March 2020  <b>Project stage:</b> Preliminary



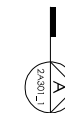
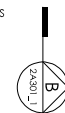
#### KEY

- 1 ENTRY
- 2 STUDY / BEDROOM 3
- 3 KITCHEN
- 4 DINING
- 5 LIVING
- 6 BEDROOM 2
- 7 BEDROOM 1
- 8 ROBE
- 9 ENSUITE
- 10 BATHROOM
- 11 LAUNDRY
- 12 GARAGE
- 13 DECK

#### AREA

GROUND FLOOR LIVING	141 m <sup>2</sup>
GARAGE	28 m <sup>2</sup>
<b>TOTAL GFA</b>	<b>169 m<sup>2</sup></b>
GROUND FLOOR DECKS	35 m <sup>2</sup>
INDICATIVE BLOCK SIZE	544 m <sup>2</sup>

NOTE: GFA CALCULATIONS DO NOT INCLUDE DECKS, CARPORTS, COURTYARDS, VERANDAHS OR NIB WALLS



# BANKSIA HOUSE

#### LEGEND

N/A

#### PROJECT



Australian Government



#### DESIGN

**Banksia House**

#### DESIGNED FOR

**Melbourne**

Technical drawings should be read with the Banksia House Melbourne 'Design Options' document which includes building specifications and rating information.

#### DETAILS

**Drawing title:** Alt Floor Plan - 2 Bedroom

**Scale:** 1:100

**Paper size:** A3

**Drawing number:** 12/13

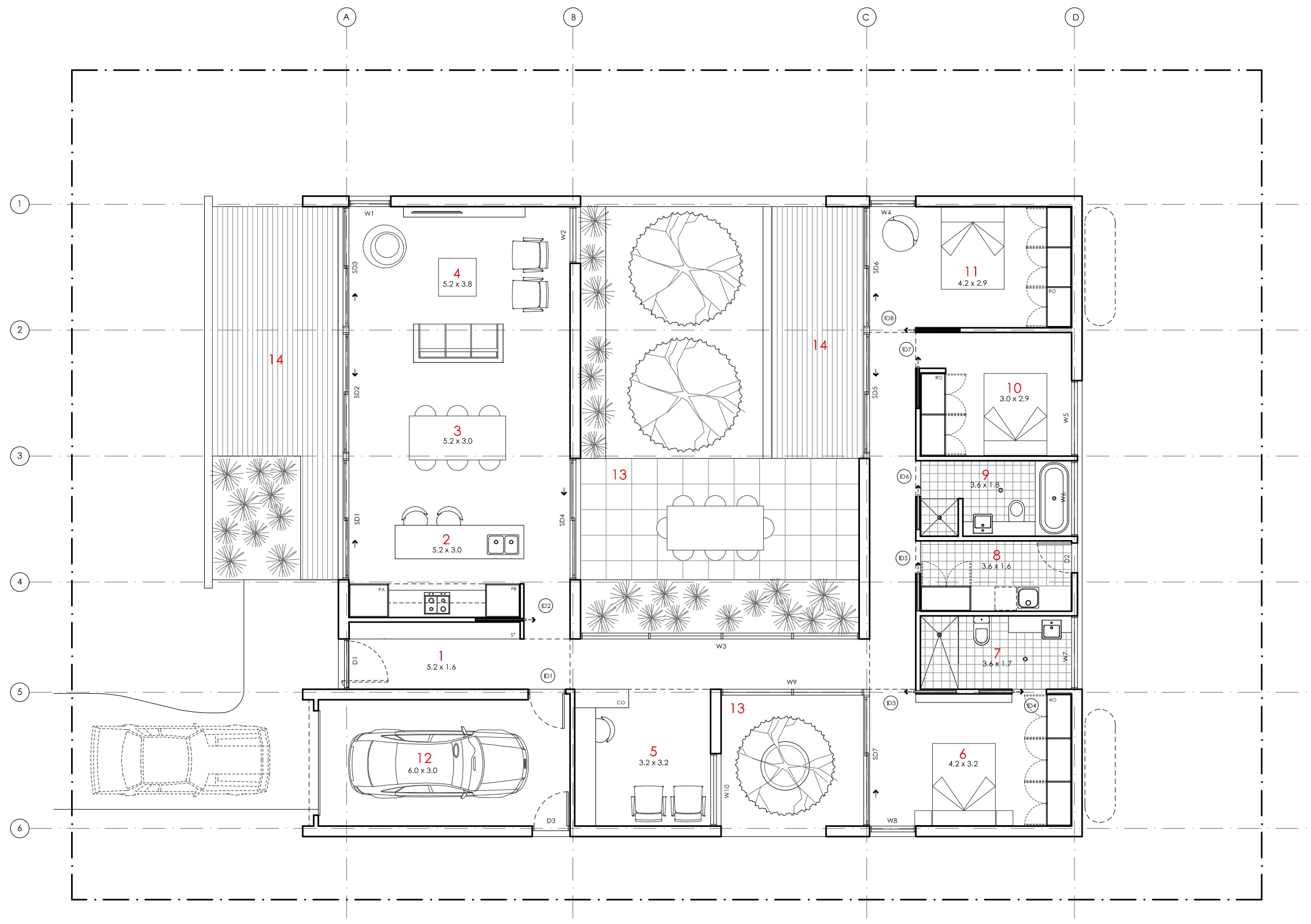
**Date issued:** March 2020

**Project stage:** Preliminary



#### DISCLAIMER

This house plan is a guide only. It does not constitute legal or other professional advice. You should seek legal or other professional advice in relation to your specific circumstances before adopting any recommendation made within it e.g. advice on structural engineering or building certification requirements. The Commonwealth does not accept responsibility for the accuracy or completeness of this plan, its fitness for a particular purpose, or compliance with any regulatory requirements and standards. Further, the Commonwealth also disclaims liability, to the extent permitted by law, for any liabilities, losses, damages and costs arising from any reliance on the contents of this plan.



- KEY**
- 1 ENTRY
  - 2 KITCHEN
  - 3 DINING
  - 4 LIVING
  - 5 STUDY
  - 6 BEDROOM 1
  - 7 ENSUITE
  - 8 LAUNDRY
  - 9 BATHROOM
  - 10 BEDROOM 2
  - 11 BEDROOM 3
  - 12 GARAGE
  - 13 COURTYARD
  - 14 DECK


**AREA**

GROUND FLOOR LIVING	167 m <sup>2</sup>
GARAGE	22 m <sup>2</sup>
<b>TOTAL GFA</b>	<b>189 m<sup>2</sup></b>
GROUND FLOOR DECKS	25 m <sup>2</sup>

INDICATIVE BLOCK SIZE 560 m<sup>2</sup>

NOTE: GFA CALCULATIONS  
DO NOT INCLUDE DECKS,  
CARPORTS, COURTYARDS,  
VERANDAHs

# BANKSIA HOUSE

LEGEND  N/A	PROJECT <div> Australian Government</div> <div> YourHome Australia's guide to environmentally sustainable homes</div> <div> Design For Place</div>			DESIGN <b>Banksia House</b>  DESIGNED FOR <b>Melbourne</b>	DETAILS <b>Drawing title:</b> Alt Floor Plan - Courtyard <b>Scale:</b> 1:100 <b>Paper size:</b> A3 <b>Drawing number:</b> 13/13 <b>Date issued:</b> March 2020 <b>Project stage:</b> Preliminary
	DISCLAIMER <p>This house plan is a guide only. It does not constitute legal or other professional advice. You should seek legal or other professional advice in relation to your specific circumstances before adopting any recommendation made within it e.g. advice on structural engineering or building certification requirements. The Commonwealth does not accept responsibility for the accuracy or completeness of this plan, its fitness for a particular purpose, or compliance with any regulatory requirements and standards. Further, the Commonwealth also disclaims liability, to the extent permitted by law, for any liabilities, losses, damages and costs arising from any reliance on the contents of this plan.</p>			Technical drawings should be read with the Banksia House Melbourne 'Design Options' document which includes building specifications and rating information.	

