



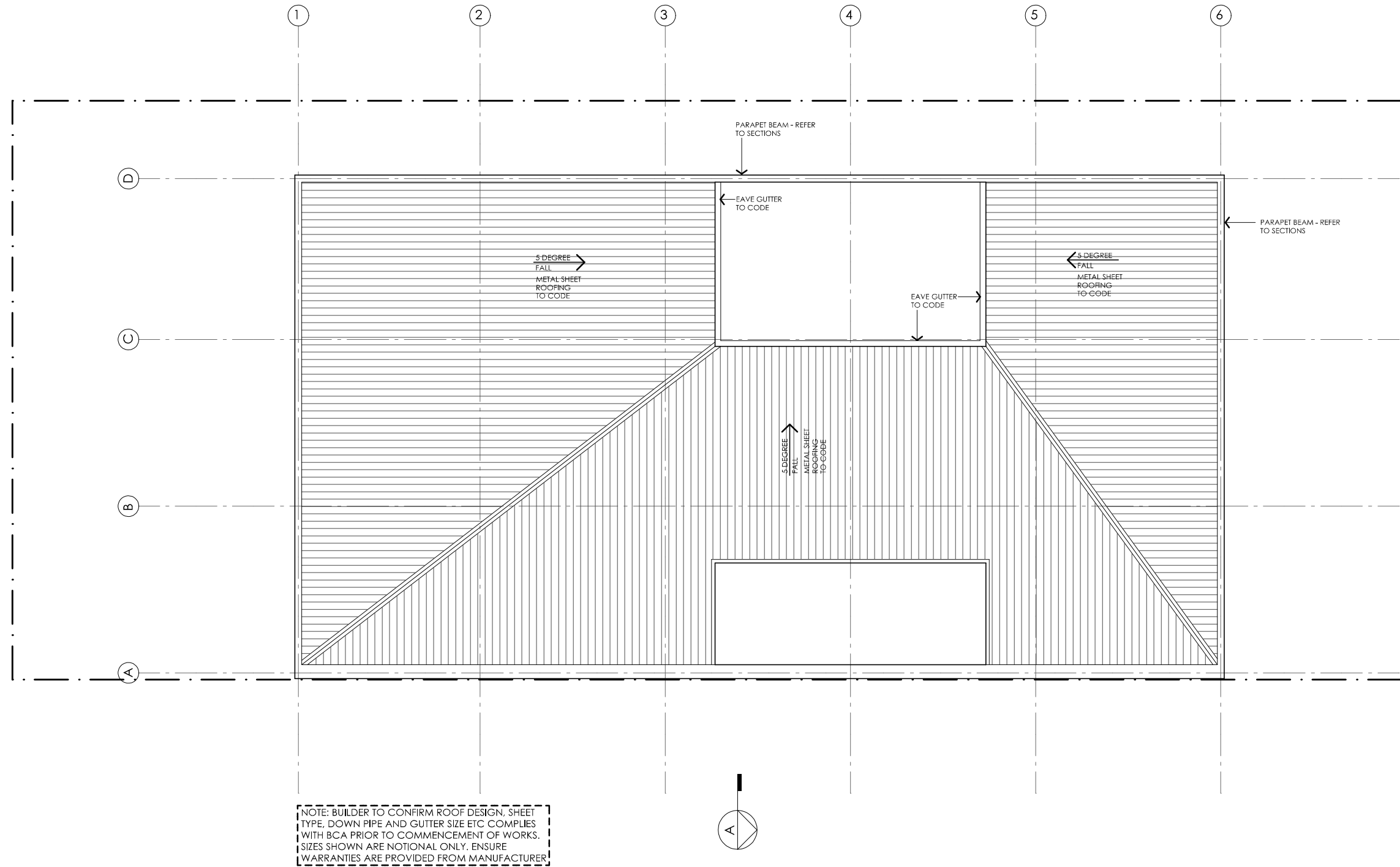


# ACACIA HOUSE

<b>LEGEND</b> N/A	<b>PROJECT</b>  <b>Australian Government</b>  <b>YourHome</b> Australia's guide to environmentally sustainable homes  <b>Design For Place</b>	<b>DESIGN</b> <b>Acacia House</b> <b>DESIGNED FOR</b> <b>Cairns – Option 1</b>	<b>DETAILS</b> <b>Drawing title:</b> Site Plan <b>Scale:</b> 1:200 <b>Paper size:</b> A3
	<b>DISCLAIMER</b> This house plan is a guide only. It does not constitute legal or other professional advice. You should seek legal or other professional advice in relation to your specific circumstances before adopting any recommendation made within it e.g. advice on structural engineering or building certification requirements. The Commonwealth does not accept responsibility for the accuracy or completeness of this plan, its fitness for a particular purpose, or compliance with any regulatory requirements and standards. Further, the Commonwealth also disclaims liability, to the extent permitted by law, for any liabilities, losses, damages and costs arising from any reliance on the contents of this plan.	Technical drawings should be read with the Acacia House Cairns 'Design Options' document which includes building specifications and rating information.	<b>Drawing number:</b> 1/10 <b>Date issued:</b> March 2020 <b>Project stage:</b> Preliminary 





# ACACIA HOUSE

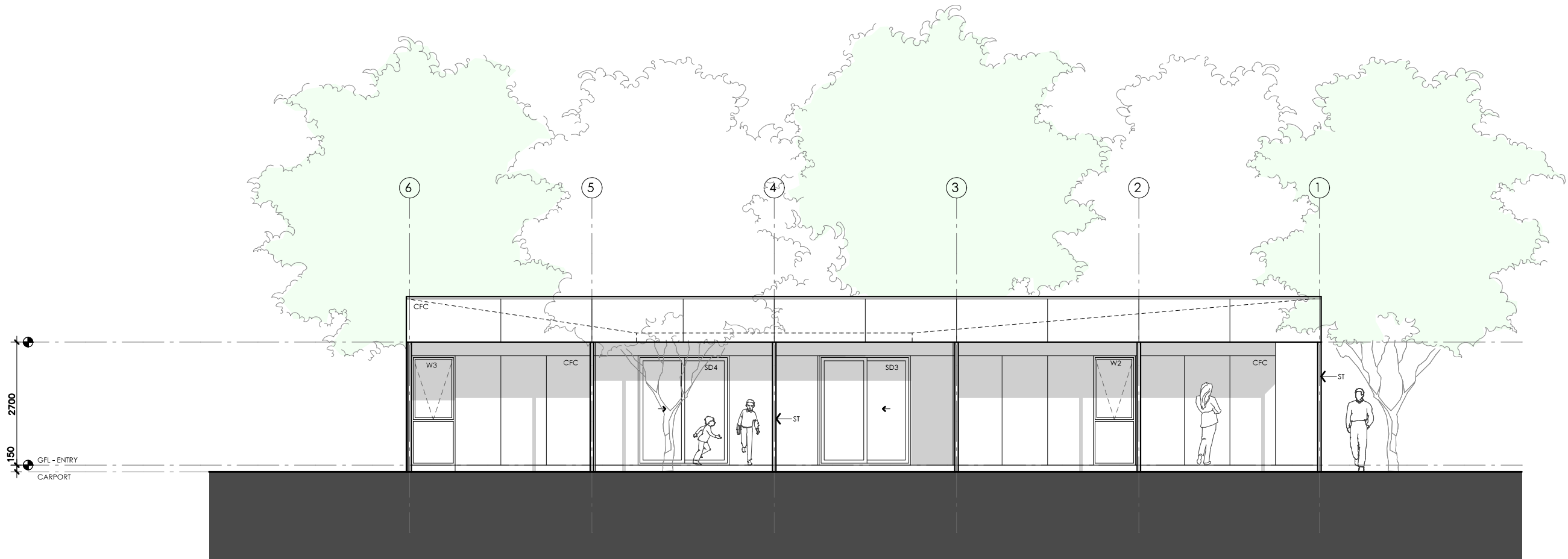
NOTES	
GFL LIVING CARPORT	123 m2 23 m2
TOTAL GFA	146 m2 (including carport)
<small>NOTE: GFA CALCULATIONS DO NOT INCLUDE DECKS, TERRACES, COURTYARDS, VERANDAS, VOIDS, STAIRS &amp; BALCONIES @ UFL. NOTE THAT INTERNAL ROOM DIMENSIONS ARE NOMINAL ONLY AND GENERALLY INCLUDE JOINERY WITHIN THOSE DIMENSIONS.</small>	

PROJECT
 Australian Government
 Australia's guide to environmentally sustainable homes
 Design For Place
DISCLAIMER
This house plan is a guide only. It does not constitute legal or other professional advice. You should seek legal or other professional advice in relation to your specific circumstances before adopting any recommendation made within it e.g. advice on structural engineering or building certification requirements. The Commonwealth does not accept responsibility for the accuracy or completeness of this plan, its fitness for a particular purpose, or compliance with any regulatory requirements and standards. Further, the Commonwealth also disclaims liability, to the extent permitted by law, for any liabilities, losses, damages and costs arising from any reliance on the contents of this plan.

DESIGN
Acacia House
DESIGNED FOR
Cairns – Option 1
Technical drawings should be read with the Acacia House Cairns 'Design Options' document which includes building specifications and rating information.




DETAILS
Drawing title: Roof Plan
Scale: 1:100
Paper size: A3
Drawing number: 3/10
Date issued: March 2020
Project stage: Preliminary





01 | EAST ELEVATION  
1:100




# ACACIA HOUSE

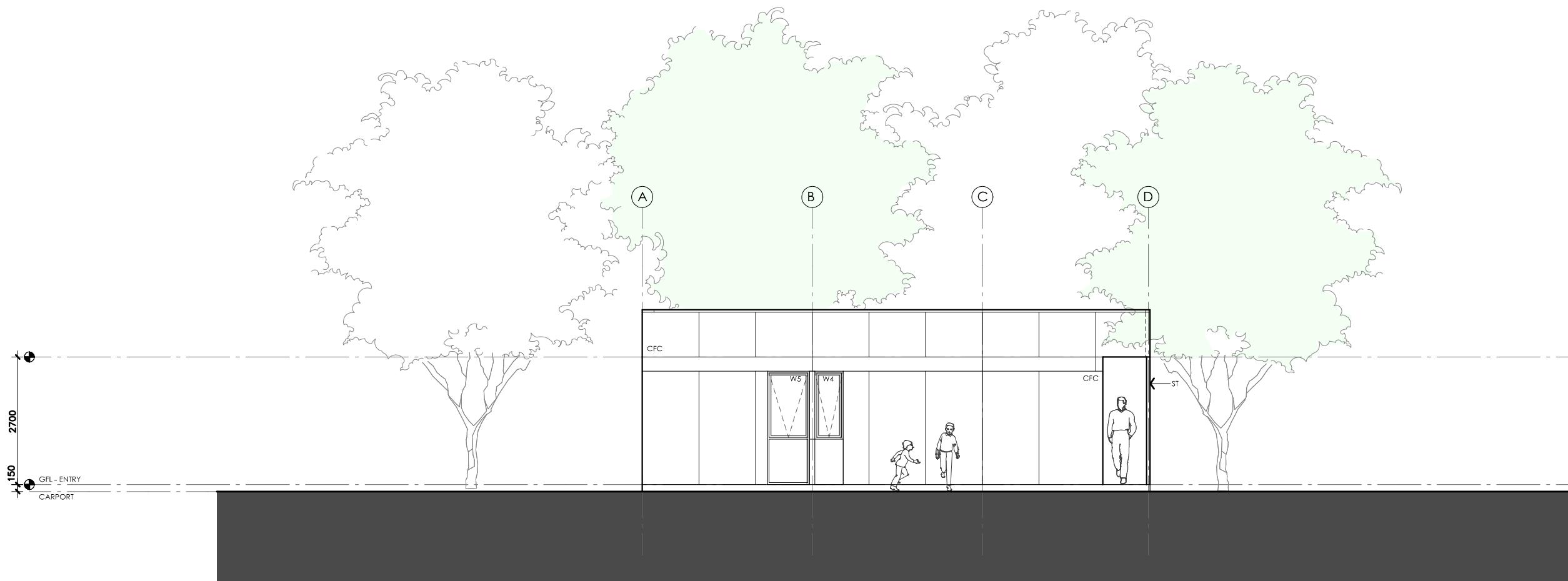
<p><b>LEGEND</b></p> <p>BW FACE BRICK WALL TYPE &amp; COLOUR TBC</p> <p>WB WEATHERBOARD CLADDING TYPE &amp; COLOUR TBC</p> <p>CFC COMPRESSED FC SHEET ON TIMBER FRAME EXPRESSED JOINT AT EDGES INDICATED</p> <p>MF FOLDED METAL FASCIA COLOUR TBC</p> <p>ST STEEL WORK COLOUR TBC</p> <p>GD GARAGE DOOR COLOUR TBC</p> <p>AL ALUMINIUM COVER PLATE COLOUR TO MATCH WINDOW FRAMES</p>	<p><b>PROJECT</b></p> <div>  <p>Australian Government</p> </div> <div>  <p>YourHome Australia's guide to environmentally sustainable homes</p> </div> <div>  <p>Design For Place</p> </div> <p><b>DISCLAIMER</b></p> <p>This house plan is a guide only. It does not constitute legal or other professional advice. You should seek legal or other professional advice in relation to your specific circumstances before adopting any recommendation made within it e.g. advice on structural engineering or building certification requirements. The Commonwealth does not accept responsibility for the accuracy or completeness of this plan, its fitness for a particular purpose, or compliance with any regulatory requirements and standards. Further, the Commonwealth also disclaims liability, to the extent permitted by law, for any liabilities, losses, damages and costs arising from any reliance on the contents of this plan.</p>	<p><b>DESIGN</b></p> <p><b>Acacia House</b></p> <p><b>DESIGNED FOR</b></p> <p><b>Cairns – Option 1</b></p> <p>Technical drawings should be read with the Acacia House Cairns 'Design Options' document which includes building specifications and rating information.</p>	<p><b>DETAILS</b></p> <p><b>Drawing title:</b> Elevation</p> <p><b>Scale:</b> 1:100</p> <p><b>Paper size:</b> A3</p> <p><b>Drawing number:</b> 4/10</p> <p><b>Date issued:</b> March 2020</p> <p><b>Project stage:</b> Preliminary</p>
--	--	---	--



01 | NORTH ELEVATION  
1:100

# ACACIA HOUSE

<b>LEGEND</b>  BW FACE BRICK WALL TYPE & COLOUR TBC  WB WEATHERBOARD CLADDING TYPE & COLOUR TBC  CFC COMPRESSED FC SHEET ON TIMBER FRAME EXPRESSED JOINT AT EDGES INDICATED  MF FOLDED METAL FASCIA COLOUR TBC  ST STEEL WORK COLOUR TBC  GD GARAGE DOOR COLOUR TBC  AL ALUMINIUM COVER PLATE COLOUR TO MATCH WINDOW FRAMES	<b>PROJECT</b>   <b>Australian Government</b>   <b>YourHome</b> Australia's guide to environmentally sustainable homes   <b>Design For Place</b>  <b>DISCLAIMER</b>  This house plan is a guide only. It does not constitute legal or other professional advice. You should seek legal or other professional advice in relation to your specific circumstances before adopting any recommendation made within it e.g. advice on structural engineering or building certification requirements. The Commonwealth does not accept responsibility for the accuracy or completeness of this plan, its fitness for a particular purpose, or compliance with any regulatory requirements and standards. Further, the Commonwealth also disclaims liability, to the extent permitted by law, for any liabilities, losses, damages and costs arising from any reliance on the contents of this plan.	<b>DESIGN</b> <b>Acacia House</b>  <b>DESIGNED FOR</b> <b>Cairns - Option 1</b>  Technical drawings should be read with the Acacia House Cairns 'Design Options' document which includes building specifications and rating information.	<b>DETAILS</b>  <b>Drawing title:</b> Elevation  <b>Scale:</b> 1:100  <b>Paper size:</b> A3  <b>Drawing number:</b> 5/10  <b>Date issued:</b> March 2020  <b>Project stage:</b> Preliminary
--	--	--	---



## 01 | SOUTH ELEVATION

1:100

# ACACIA HOUSE

### LEGEND

BW	FACE BRICK WALL TYPE & COLOUR TBC
WB	WEATHERBOARD CLADDING TYPE & COLOUR TBC
CFC	COMPRESSED FC SHEET ON TIMBER FRAME EXPRESSED JOINT AT EDGES INDICATED
MF	FOLDED METAL FASCIA COLOUR TBC
ST	STEEL WORK COLOUR TBC
GD	GARAGE DOOR COLOUR TBC
AL	ALUMINIUM COVER PLATE COLOUR TO MATCH WINDOW FRAMES

### PROJECT



Australian Government



### DISCLAIMER

This house plan is a guide only. It does not constitute legal or other professional advice. You should seek legal or other professional advice in relation to your specific circumstances before adopting any recommendation made within it e.g. advice on structural engineering or building certification requirements. The Commonwealth does not accept responsibility for the accuracy or completeness of this plan, its fitness for a particular purpose, or compliance with any regulatory requirements and standards. Further, the Commonwealth also disclaims liability, to the extent permitted by law, for any liabilities, losses, damages and costs arising from any reliance on the contents of this plan.

### DESIGN

Acacia House

### DESIGNED FOR

Cairns - Option 1

Technical drawings should be read with the Acacia House Cairns 'Design Options' document which includes building specifications and rating information.

### DETAILS

**Drawing title:** Elevation

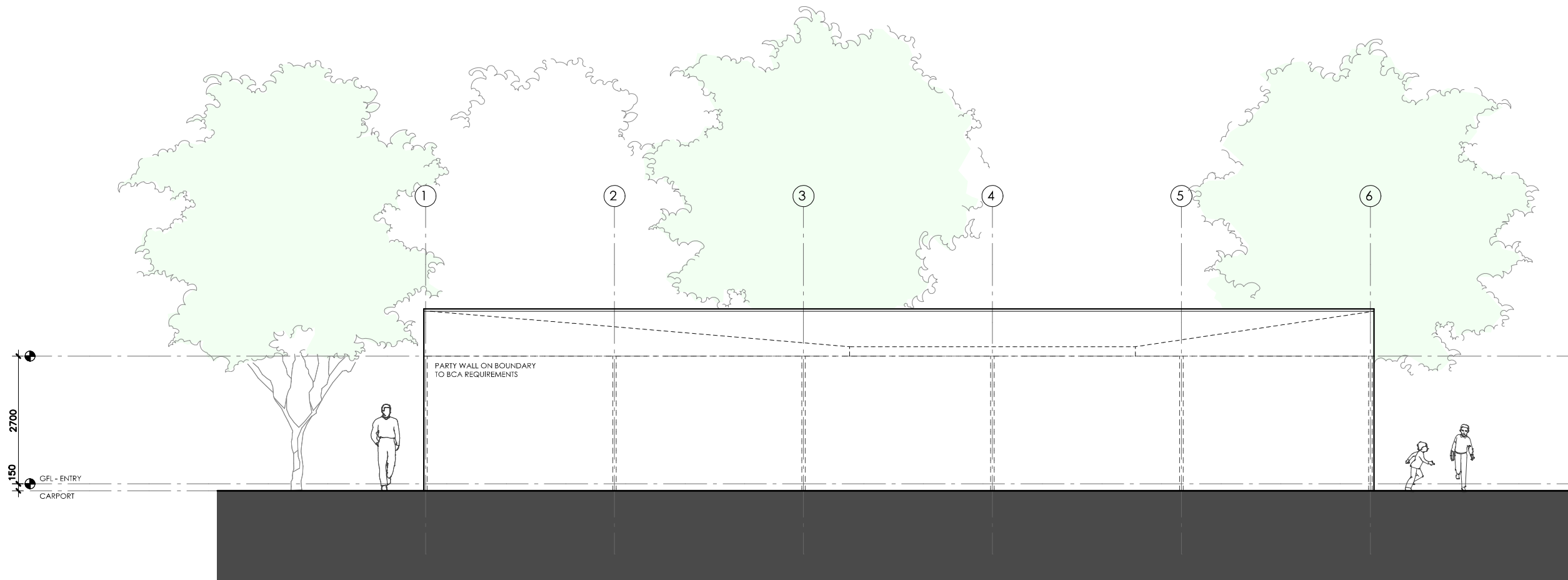
**Scale:** 1:100

**Paper size:** A3

**Drawing number:** 6/10




**Date issued:** March 2020

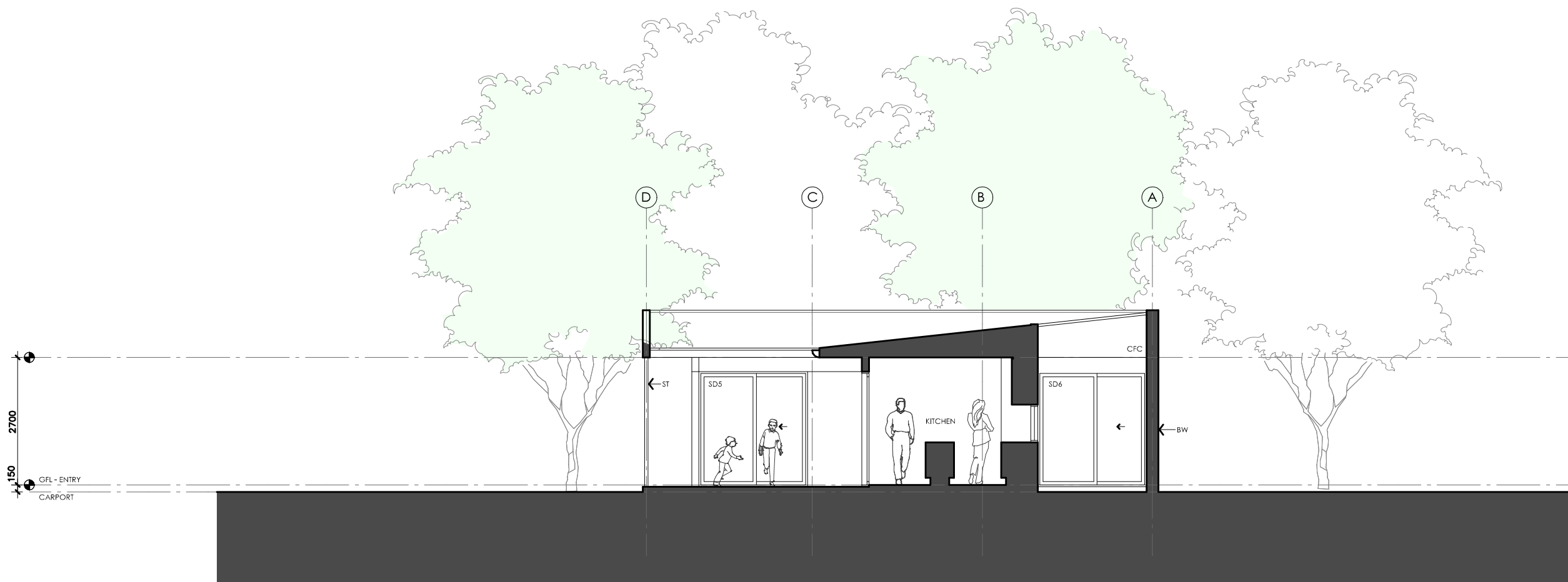
**Project stage:** Preliminary



01 | WEST ELEVATION  
1:100

# ACACIA HOUSE

<div>LEGEND</div> <div><div><div>BW</div><div>FACE BRICK WALL TYPE &amp; COLOUR TBC</div></div><div><div>WB</div><div>WEATHERBOARD CLADDING TYPE &amp; COLOUR TBC</div></div><div><div>CFC</div><div>COMPRESSED FC SHEET ON TIMBER FRAME EXPRESSED JOINT AT EDGES INDICATED</div></div><div><div>MF</div><div>FOLDED METAL FASCIA COLOUR TBC</div></div><div><div>ST</div><div>STEEL WORK COLOUR TBC</div></div><div><div>GD</div><div>GARAGE DOOR COLOUR TBC</div></div><div><div>AL</div><div>ALUMINIUM COVER PLATE COLOUR TO MATCH WINDOW FRAMES</div></div></div>	<div>PROJECT</div> <div><div><div></div><div>Australian Government</div></div><div><div></div><div>YourHome</div><div>Australia's guide to environmentally sustainable homes</div></div><div><div></div><div>Design For Place</div></div></div>	<div>DESIGN</div> <div>Acacia House</div> <div>DESIGNED FOR</div> <div>Cairns – Option 1</div> <div>Technical drawings should be read with the Acacia House Cairns 'Design Options' document which includes building specifications and rating information.</div>	<div>DETAILS</div> <div>Drawing title: Elevation</div> <div>Scale: 1:100</div> <div>Paper size: A3</div> <div>Drawing number: 7/10</div> <div>Date issued: March 2020</div> <div>Project stage: Preliminary</div>
	<div>DISCLAIMER</div> <div>This house plan is a guide only. It does not constitute legal or other professional advice. You should seek legal or other professional advice in relation to your specific circumstances before adopting any recommendation made within it e.g. advice on structural engineering or building certification requirements. The Commonwealth does not accept responsibility for the accuracy or completeness of this plan, its fitness for a particular purpose, or compliance with any regulatory requirements and standards. Further, the Commonwealth also disclaims liability, to the extent permitted by law, for any liabilities, losses, damages and costs arising from any reliance on the contents of this plan.</div>		

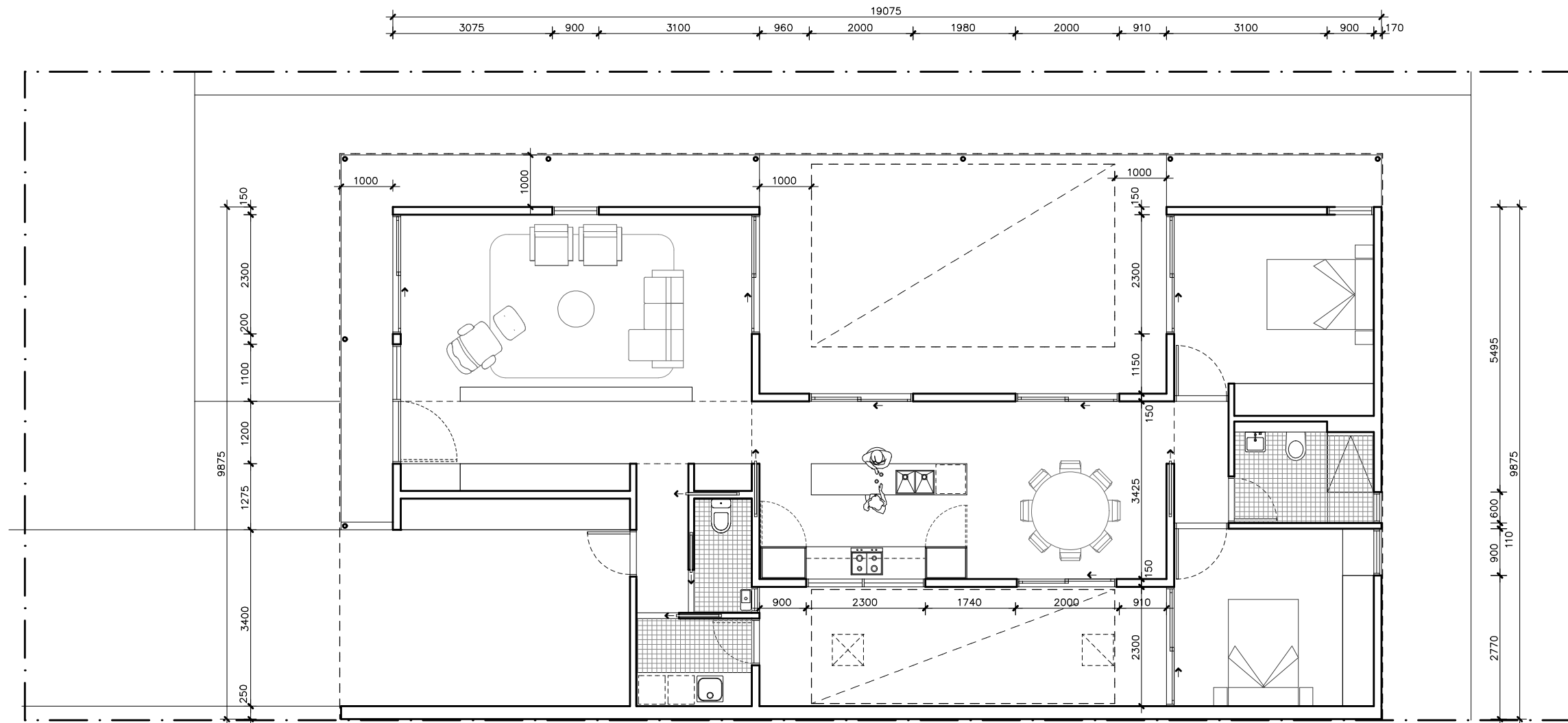


01 | SECTION AA  
1:100





# ACACIA HOUSE

<b>LEGEND</b>  BW FACE BRICK WALL TYPE & COLOUR TBC  WB WEATHERBOARD CLADDING TYPE & COLOUR TBC  CFC COMPRESSED FC SHEET ON TIMBER FRAME EXPRESSED JOINT AT EDGES INDICATED  MF FOLDED METAL FASCIA COLOUR TBC  ST STEEL WORK COLOUR TBC  GD GARAGE DOOR COLOUR TBC  AL ALUMINIUM COVER PLATE COLOUR TO MATCH WINDOW FRAMES	<b>PROJECT</b> <div><b>Australian Government</b></div> <div><b>YourHome</b> Australia's guide to environmentally sustainable homes</div> <div><b>Design For Place</b></div> <b>DISCLAIMER</b> <p>This house plan is a guide only. It does not constitute legal or other professional advice. You should seek legal or other professional advice in relation to your specific circumstances before adopting any recommendation made within it e.g. advice on structural engineering or building certification requirements. The Commonwealth does not accept responsibility for the accuracy or completeness of this plan, its fitness for a particular purpose, or compliance with any regulatory requirements and standards. Further, the Commonwealth also disclaims liability, to the extent permitted by law, for any liabilities, losses, damages and costs arising from any reliance on the contents of this plan.</p>	<b>DESIGN</b> <b>Acacia House</b>  <b>DESIGNED FOR</b> <b>Cairns – Option 1</b>  Technical drawings should be read with the Acacia House Cairns 'Design Options' document which includes building specifications and rating information.	<b>DETAILS</b> <b>Drawing title:</b> Section <b>Scale:</b> 1:100 <b>Paper size:</b> A3 <b>Drawing number:</b> 8/10 <b>Date issued:</b> March 2020 <b>Project stage:</b> Preliminary
--	--	--	---





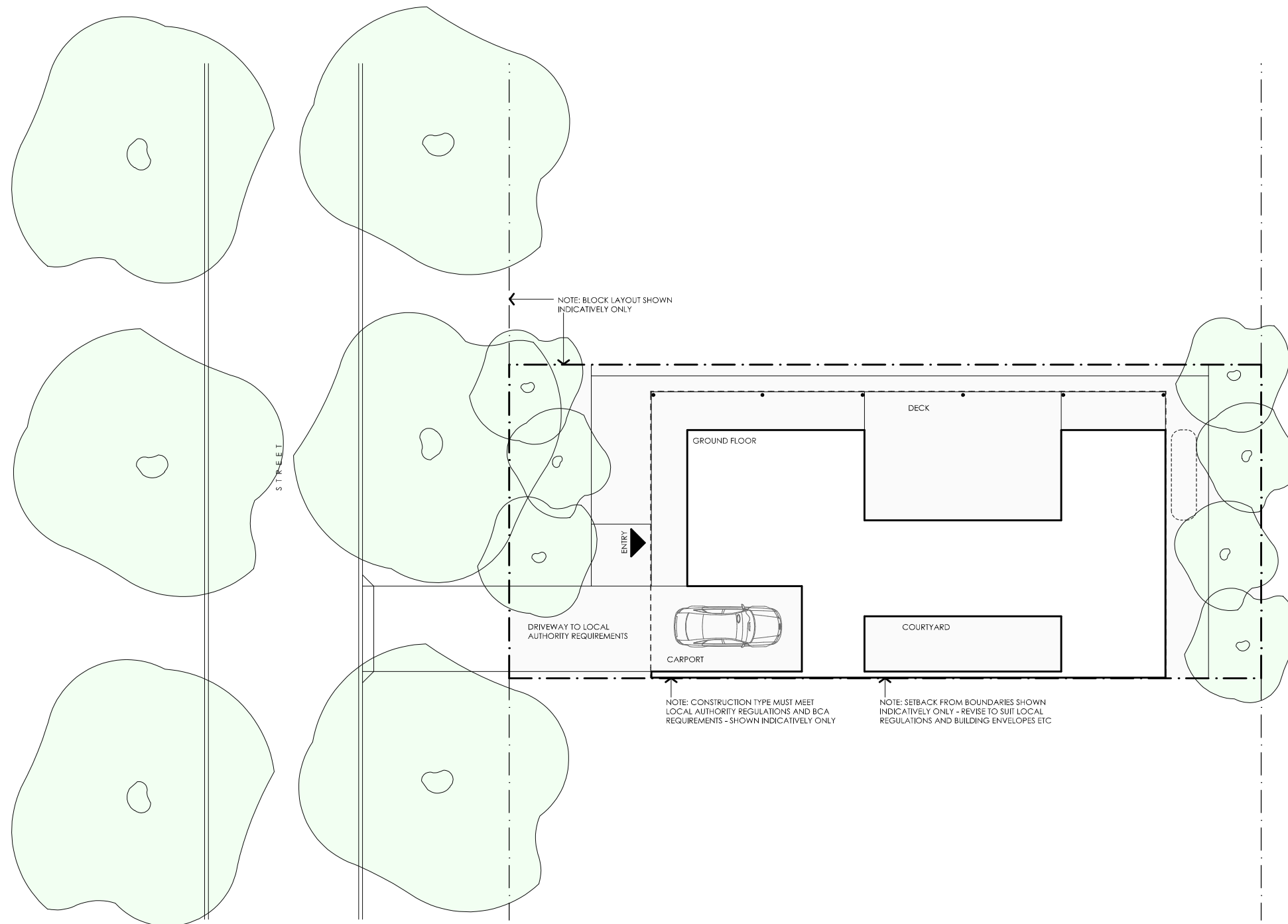
# ACACIA HOUSE

<b>LEGEND</b> N/A	<b>PROJECT</b>  <b>Australian Government</b>  <b>YourHome</b> Australia's guide to environmentally sustainable homes  <b>Design For Place</b>	<b>DESIGN</b> <b>Acacia House</b> <b>DESIGNED FOR</b> <b>Cairns – Option 1</b>	<b>DETAILS</b> <b>Drawing title:</b> Wall Setout Plan <b>Scale:</b> 1:100 <b>Paper size:</b> A3
	<b>DISCLAIMER</b> This house plan is a guide only. It does not constitute legal or other professional advice. You should seek legal or other professional advice in relation to your specific circumstances before adopting any recommendation made within it e.g. advice on structural engineering or building certification requirements. The Commonwealth does not accept responsibility for the accuracy or completeness of this plan, its fitness for a particular purpose, or compliance with any regulatory requirements and standards. Further, the Commonwealth also disclaims liability, to the extent permitted by law, for any liabilities, losses, damages and costs arising from any reliance on the contents of this plan.	Technical drawings should be read with the Acacia House Cairns 'Design Options' document which includes building specifications and rating information.	<b>Drawing number:</b> 9/10 <b>Date issued:</b> March 2020 <b>Project stage:</b> Preliminary 

REFERENCE	HEIGHT	WIDTH	TYPE	NOTES
D1	2400mm	1100mm	Solid door	1000mm Eave at 2700mm above Finished Floor Level
SD1	2400mm	2300mm	Glazed sliding door	1000mm Eave at 2700mm above Finished Floor Level
W1	2400mm	1100mm	Fixed window	1000mm Eave at 2700mm above Finished Floor Level
W2	2400mm	900mm	Fixed / awning window	1000mm Eave at 2700mm above Finished Floor Level See elevations for breakdown of opening types
SD2	2400mm	2300mm	Glazed sliding door	1000mm Eave at 2700mm above Finished Floor Level
SD3	2400mm	2000mm	Glazed sliding door	1000mm Eave at 2700mm above Finished Floor Level
SD4	2400mm	2000mm	Glazed sliding door	1000mm Eave at 2700mm above Finished Floor Level
SD5	2400mm	2300mm	Glazed sliding door	1000mm Eave at 2700mm above Finished Floor Level
W3	2400mm	900mm	Fixed / awning window	1000mm Eave at 2700mm above Finished Floor Level See elevations for breakdown of opening types
W4	1440mm	600mm	Awning window	
W5	2400mm	900mm	Fixed / awning window	See elevations for breakdown of opening types
SD6	2400mm	2300mm	Glazed sliding door	1000mm Eave at 2700mm above Finished Floor Level
SD7	2400mm	2000mm	Glazed sliding door	
W6	800mm	2300mm	Fixed window	
W7	600mm	600mm	Sliding window	1000mm Eave at 2700mm above Finished Floor Level
D2	2250mm	820mm	Glazed hinged door	1000mm Eave at 2700mm above Finished Floor Level

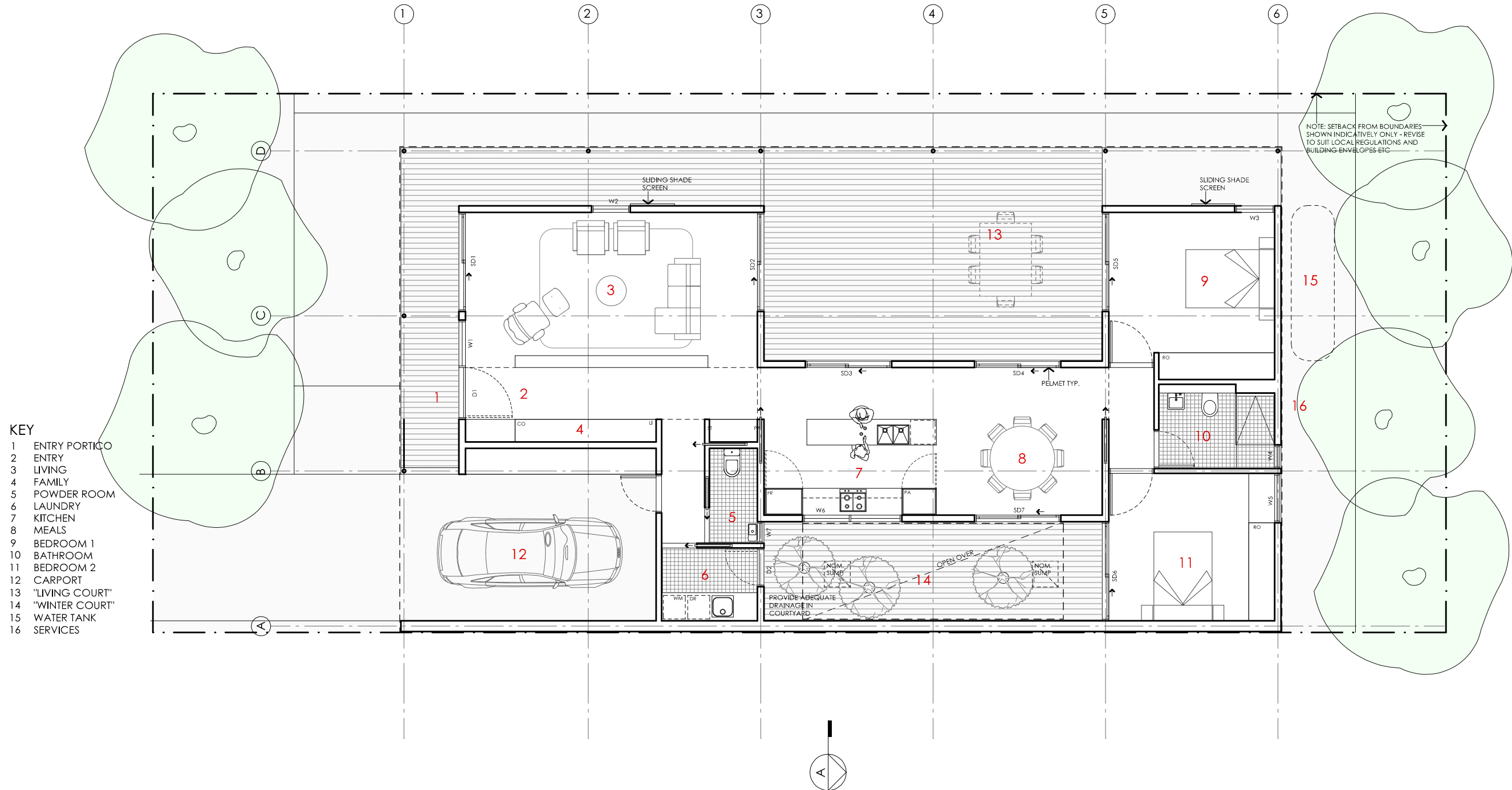
# ACACIA HOUSE

LEGEND N/A	PROJECT <div> <b>Australian Government</b></div> <div> <b>YourHome</b> Australia's guide to environmentally sustainable homes</div> <div> <b>Design For Place</b></div>	DESIGN <b>Acacia House</b>	DETAILS
	DISCLAIMER This house plan is a guide only. It does not constitute legal or other professional advice. You should seek legal or other professional advice in relation to your specific circumstances before adopting any recommendation made within it e.g. advice on structural engineering or building certification requirements. The Commonwealth does not accept responsibility for the accuracy or completeness of this plan, its fitness for a particular purpose, or compliance with any regulatory requirements and standards. Further, the Commonwealth also disclaims liability, to the extent permitted by law, for any liabilities, losses, damages and costs arising from any reliance on the contents of this plan.	DESIGNED FOR <b>Cairns – Option 1</b>  Technical drawings should be read with the Acacia House Cairns 'Design Options' document which includes building specifications and rating information.	<b>Drawing title:</b> Window and Door Schedule  <b>Scale:</b> N/A  <b>Paper size:</b> A3  <b>Drawing number:</b> 10/10  <b>Date issued:</b> March 2020  <b>Project stage:</b> Preliminary







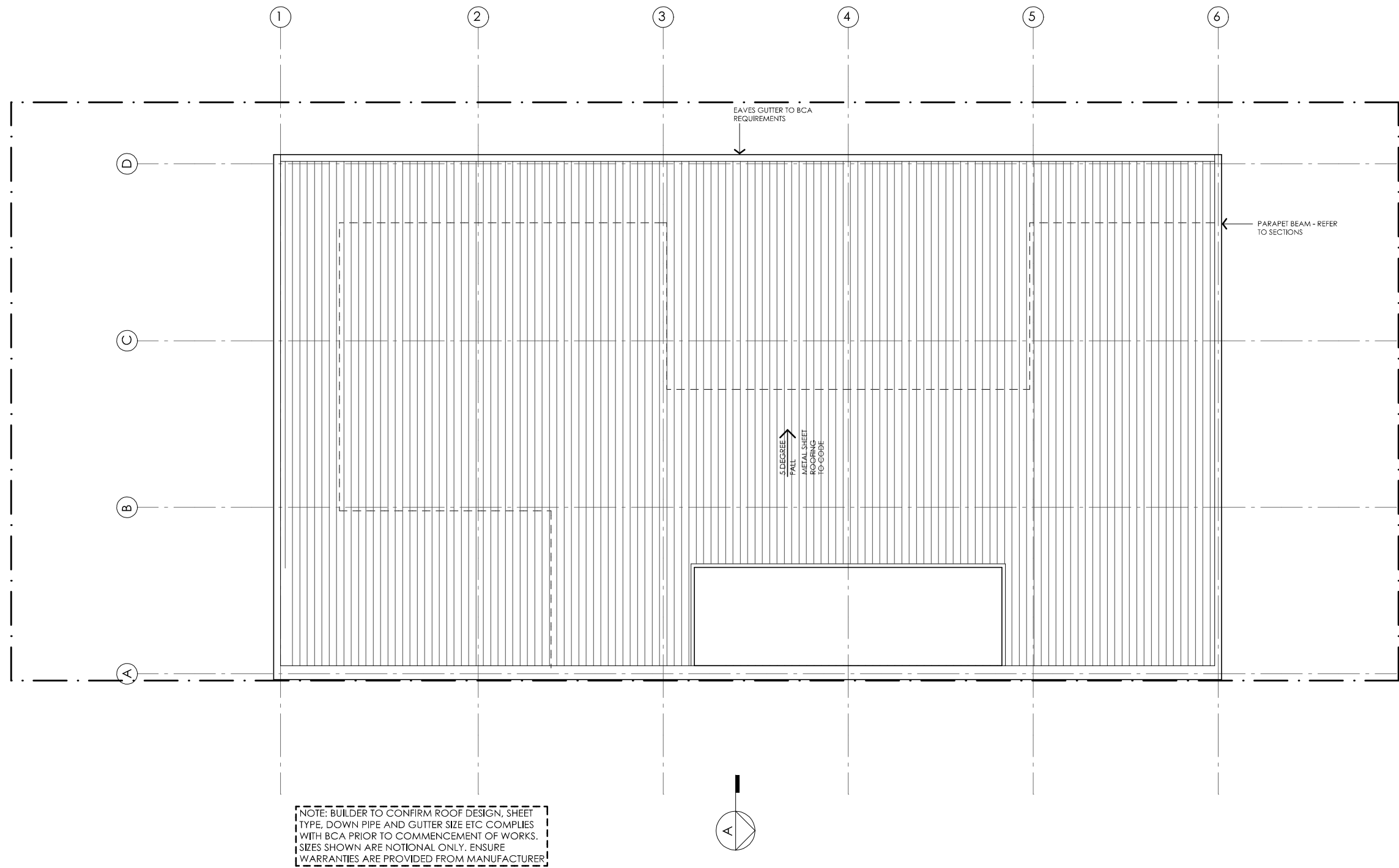
# ACACIA HOUSE

<p><b>LEGEND</b></p> <p>N/A</p>	<p><b>PROJECT</b></p> <div data-bbox="647 1738 979 1822"> </div> <div data-bbox="1127 1738 1558 1822"> </div> <div data-bbox="1751 1738 1869 1822"> </div>	<p><b>DESIGN</b></p> <p><b>Acacia House</b></p> <p><b>DESIGNED FOR</b></p> <p><b>Cairns – Option 2</b></p>	<p><b>DETAILS</b></p> <p><b>Drawing title:</b> Site Plan</p> <p><b>Scale:</b> 1:200</p> <p><b>Paper size:</b> A3</p>
	<p><b>DISCLAIMER</b></p> <p>This house plan is a guide only. It does not constitute legal or other professional advice. You should seek legal or other professional advice in relation to your specific circumstances before adopting any recommendation made within it e.g. advice on structural engineering or building certification requirements. The Commonwealth does not accept responsibility for the accuracy or completeness of this plan, its fitness for a particular purpose, or compliance with any regulatory requirements and standards. Further, the Commonwealth also disclaims liability, to the extent permitted by law, for any liabilities, losses, damages and costs arising from any reliance on the contents of this plan.</p>	<p>Technical drawings should be read with the Acacia House Cairns 'Design Options' document which includes building specifications and rating information.</p>	<p><b>Drawing number:</b> 1/10</p> <p><b>Date issued:</b> March 2020</p> <p><b>Project stage:</b> Preliminary</p> <div data-bbox="2745 1906 2878 2005"> </div>



# ACACIA HOUSE

<p><b>NOTES</b></p> <p>GFL LIVING 123 m2 CARPORT 23 m2</p> <p><b>TOTAL GFA</b> 146 m2 (including carport)</p> <p><small>NOTE: GFA CALCULATIONS DO NOT INCLUDE DECKS, TERRACES, COURTYARDS, VERANDAS, VOIDS, STAIRS &amp; BALCONIES @ UFL. NOTE THAT INTERNAL ROOM DIMENSIONS ARE NOMINAL ONLY AND GENERALLY INCLUDE JOINERY WITHIN THOSE DIMENSIONS.</small></p>	<p><b>PROJECT</b></p> <div><b>Australian Government</b></div> <div><b>YourHome</b> Australia's guide to environmentally sustainable homes</div> <div><b>Design For Place</b></div> <p><b>DISCLAIMER</b></p> <p>This house plan is a guide only. It does not constitute legal or other professional advice. You should seek legal or other professional advice in relation to your specific circumstances before adopting any recommendation made within it e.g. advice on structural engineering or building certification requirements. The Commonwealth does not accept responsibility for the accuracy or completeness of this plan, its fitness for a particular purpose, or compliance with any regulatory requirements and standards. Further, the Commonwealth also disclaims liability, to the extent permitted by law, for any liabilities, losses, damages and costs arising from any reliance on the contents of this plan.</p>	<p><b>DESIGN</b></p> <p><b>Acacia House</b></p> <p><b>DESIGNED FOR</b></p> <p><b>Cairns - Option 2</b></p> <p>Technical drawings should be read with the Acacia House Cairns 'Design Options' document which includes building specifications and rating information.</p>	<p><b>DETAILS</b></p> <p><b>Drawing title:</b> Floor Plan</p> <p><b>Scale:</b> 1:100</p> <p><b>Paper size:</b> A3</p> <p><b>Drawing number:</b> 2/10</p> <p><b>Date issued:</b> March 2020</p> <p><b>Project stage:</b> Preliminary</p> <div></div>
--	---	---	--



# ACACIA HOUSE

## NOTES

GFL LIVING 123 m2  
CARPORT 23 m2

TOTAL GFA 146 m2 (including carport)

NOTE: GFA CALCULATIONS DO NOT INCLUDE DECKS, TERRACES, COURTYARDS, VERANDAS, VOIDS, STAIRS & BALCONIES @ UFL. NOTE THAT INTERNAL ROOM DIMENSIONS ARE NOMINAL ONLY AND GENERALLY INCLUDE JOINERY WITHIN THOSE DIMENSIONS.

## PROJECT



Australian Government



## DISCLAIMER

This house plan is a guide only. It does not constitute legal or other professional advice. You should seek legal or other professional advice in relation to your specific circumstances before adopting any recommendation made within it e.g. advice on structural engineering or building certification requirements. The Commonwealth does not accept responsibility for the accuracy or completeness of this plan, its fitness for a particular purpose, or compliance with any regulatory requirements and standards. Further, the Commonwealth also disclaims liability, to the extent permitted by law, for any liabilities, losses, damages and costs arising from any reliance on the contents of this plan.

## DESIGN

Acacia House

DESIGNED FOR

Cairns - Option 2

Technical drawings should be read with the Acacia House Cairns 'Design Options' document which includes building specifications and rating information.

## DETAILS

Drawing title: Roof Plan

Scale: 1:100

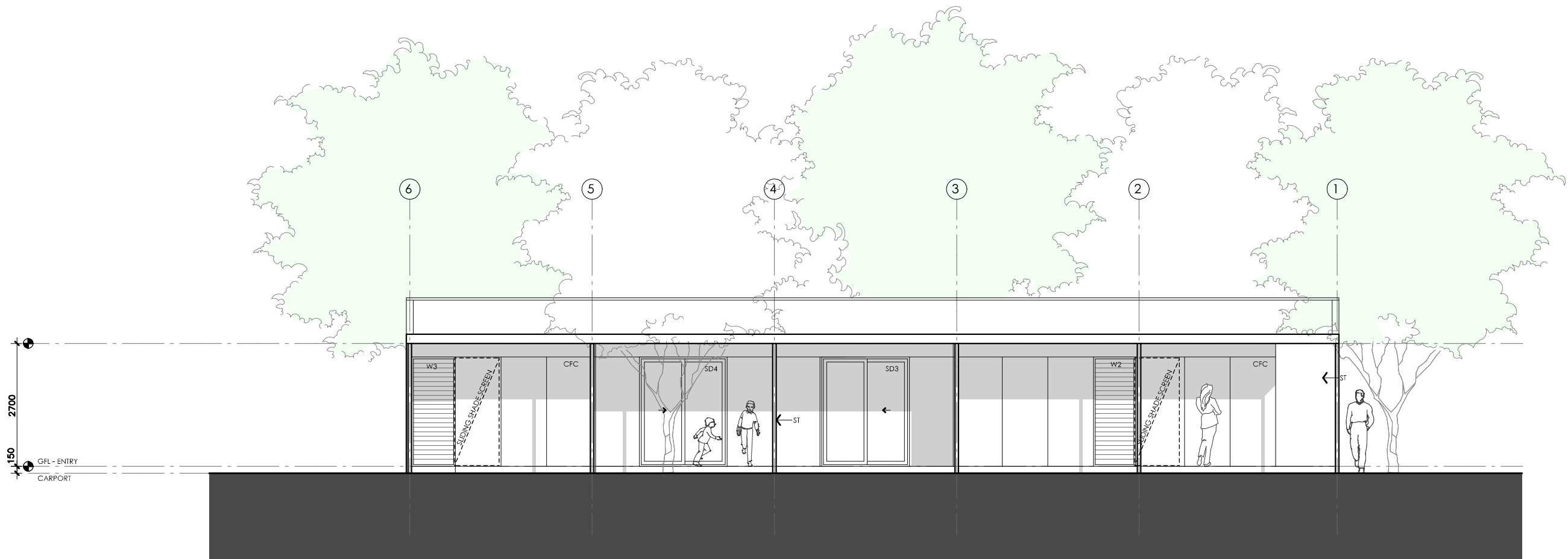
Paper size: A3

Drawing number: 3/10

Date issued: March 2020




Project stage: Preliminary

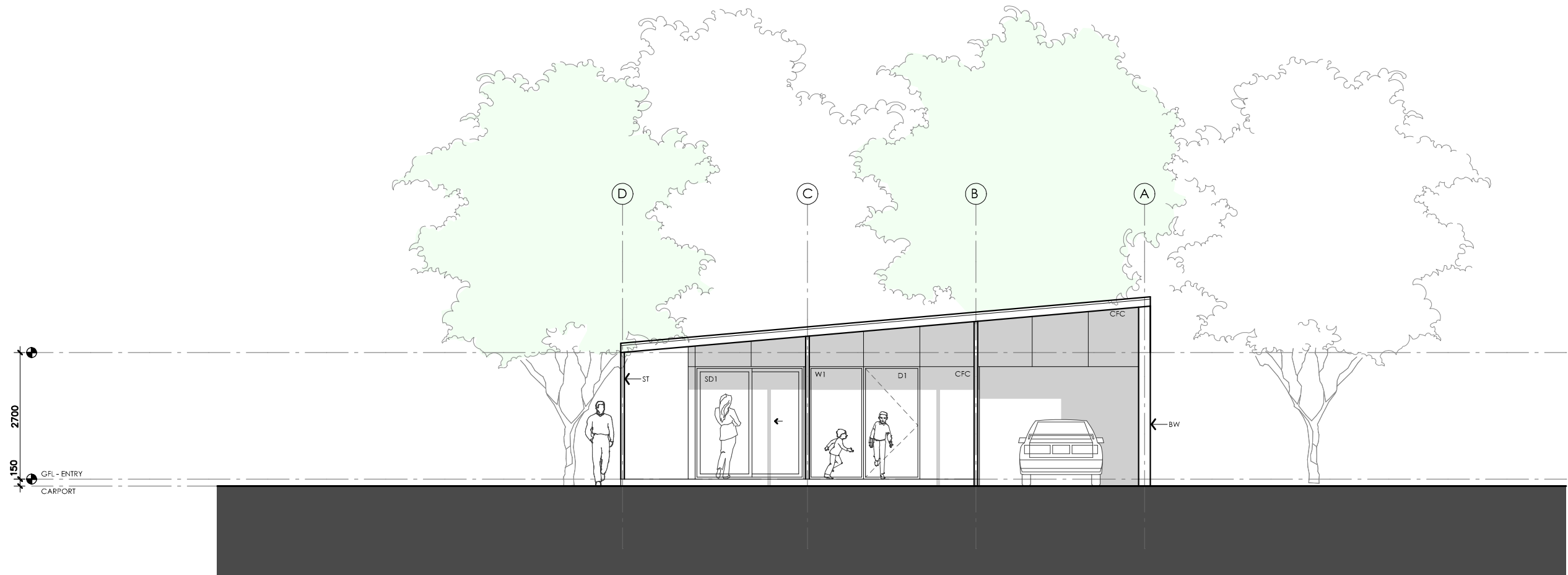




01 | EAST ELEVATION  
1:100




# ACACIA HOUSE

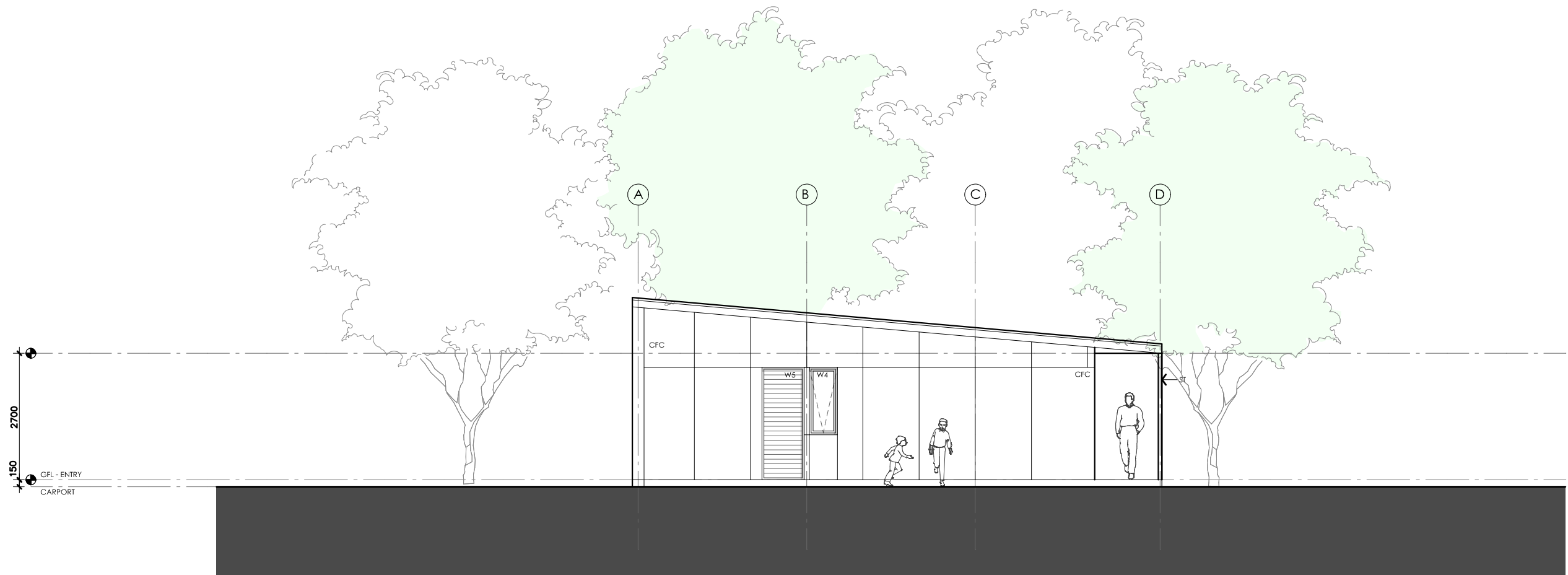
<p><b>LEGEND</b></p> <p>BW FACE BRICK WALL TYPE &amp; COLOUR TBC</p> <p>WB WEATHERBOARD CLADDING TYPE &amp; COLOUR TBC</p> <p>CFC COMPRESSED FC SHEET ON TIMBER FRAME EXPRESSED JOINT AT EDGES INDICATED</p> <p>MF FOLDED METAL FASCIA COLOUR TBC</p> <p>ST STEEL WORK COLOUR TBC</p> <p>GD GARAGE DOOR COLOUR TBC</p> <p>AL ALUMINIUM COVER PLATE COLOUR TO MATCH WINDOW FRAMES</p>	<p><b>PROJECT</b></p> <div>  <p>Australian Government</p> </div> <div>  <p>Australia's guide to environmentally sustainable homes</p> </div> <div>  <p>Design For Place</p> </div> <p><b>DISCLAIMER</b></p> <p>This house plan is a guide only. It does not constitute legal or other professional advice. You should seek legal or other professional advice in relation to your specific circumstances before adopting any recommendation made within it e.g. advice on structural engineering or building certification requirements. The Commonwealth does not accept responsibility for the accuracy or completeness of this plan, its fitness for a particular purpose, or compliance with any regulatory requirements and standards. Further, the Commonwealth also disclaims liability, to the extent permitted by law, for any liabilities, losses, damages and costs arising from any reliance on the contents of this plan.</p>	<p><b>DESIGN</b></p> <p><b>Acacia House</b></p> <p><b>DESIGNED FOR</b></p> <p><b>Cairns – Option 2</b></p> <p>Technical drawings should be read with the Acacia House Cairns 'Design Options' document which includes building specifications and rating information.</p>	<p><b>DETAILS</b></p> <p><b>Drawing title:</b> Elevation</p> <p><b>Scale:</b> 1:100</p> <p><b>Paper size:</b> A3</p> <p><b>Drawing number:</b> 4/10</p> <p><b>Date issued:</b> March 2020</p> <p><b>Project stage:</b> Preliminary</p>
--	---	---	--



01 | NORTH ELEVATION  
1:100




# ACACIA HOUSE

<b>LEGEND</b>  BW FACE BRICK WALL TYPE & COLOUR TBC  WB WEATHERBOARD CLADDING TYPE & COLOUR TBC  CFC COMPRESSED FC SHEET ON TIMBER FRAME EXPRESSED JOINT AT EDGES INDICATED  MF FOLDED METAL FASCIA COLOUR TBC  ST STEEL WORK COLOUR TBC  GD GARAGE DOOR COLOUR TBC  AL ALUMINIUM COVER PLATE COLOUR TO MATCH WINDOW FRAMES	<b>PROJECT</b> <div> <b>Australian Government</b></div> <div> <b>YourHome</b> Australia's guide to environmentally sustainable homes</div> <div> <b>Design For Place</b></div> <b>DISCLAIMER</b> <p>This house plan is a guide only. It does not constitute legal or other professional advice. You should seek legal or other professional advice in relation to your specific circumstances before adopting any recommendation made within it e.g. advice on structural engineering or building certification requirements. The Commonwealth does not accept responsibility for the accuracy or completeness of this plan, its fitness for a particular purpose, or compliance with any regulatory requirements and standards. Further, the Commonwealth also disclaims liability, to the extent permitted by law, for any liabilities, losses, damages and costs arising from any reliance on the contents of this plan.</p>	<b>DESIGN</b> <b>Acacia House</b>  <b>DESIGNED FOR</b> <b>Cairns - Option 2</b>  Technical drawings should be read with the Acacia House Cairns 'Design Options' document which includes building specifications and rating information.	<b>DETAILS</b> <b>Drawing title:</b> Elevation <b>Scale:</b> 1:100 <b>Paper size:</b> A3 <b>Drawing number:</b> 5/10 <b>Date issued:</b> March 2020 <b>Project stage:</b> Preliminary
--	---	--	---

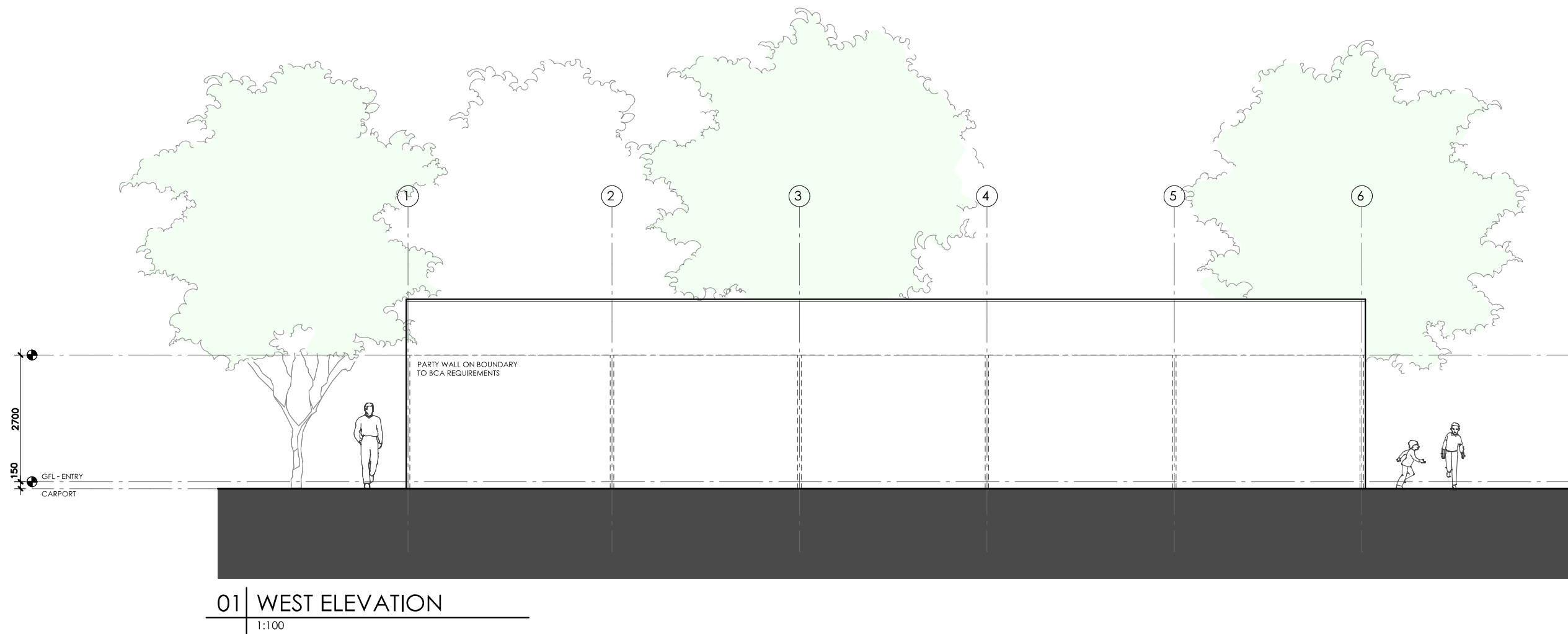


01 | SOUTH ELEVATION  
1:100

# ACACIA HOUSE

<b>LEGEND</b> BW FACE BRICK WALL TYPE & COLOUR TBC WB WEATHERBOARD CLADDING TYPE & COLOUR TBC CFC COMPRESSED FC SHEET ON TIMBER FRAME EXPRESSED JOINT AT EDGES INDICATED MF FOLDED METAL FASCIA COLOUR TBC ST STEEL WORK COLOUR TBC GD GARAGE DOOR COLOUR TBC AL ALUMINIUM COVER PLATE COLOUR TO MATCH WINDOW FRAMES	<b>PROJECT</b>  <b>Australian Government</b>  <b>YourHome</b> Australia's guide to environmentally sustainable homes  <b>Design For Place</b> <b>DISCLAIMER</b> This house plan is a guide only. It does not constitute legal or other professional advice. You should seek legal or other professional advice in relation to your specific circumstances before adopting any recommendation made within it e.g. advice on structural engineering or building certification requirements. The Commonwealth does not accept responsibility for the accuracy or completeness of this plan, its fitness for a particular purpose, or compliance with any regulatory requirements and standards. Further, the Commonwealth also disclaims liability, to the extent permitted by law, for any liabilities, losses, damages and costs arising from any reliance on the contents of this plan.	<b>DESIGN</b> <b>Acacia House</b> <b>DESIGNED FOR</b> <b>Cairns – Option 2</b> Technical drawings should be read with the Acacia House Cairns 'Design Options' document which includes building specifications and rating information.	<b>DETAILS</b> <b>Drawing title:</b> Elevation <b>Scale:</b> 1:100 <b>Paper size:</b> A3 <b>Drawing number:</b> 6/10 <b>Date issued:</b> March 2020 <b>Project stage:</b> Preliminary
--	--	--	---





# ACACIA HOUSE

## LEGEND

- BW FACE BRICK WALL  
TYPE & COLOUR TBC
- WB WEATHERBOARD CLADDING  
TYPE & COLOUR TBC
- CFC COMPRESSED FC SHEET ON TIMBER FRAME  
EXPRESSED JOINT AT EDGES INDICATED
- MF FOLDED METAL FASCIA  
COLOUR TBC
- ST STEEL WORK  
COLOUR TBC
- GD GARAGE DOOR  
COLOUR TBC
- AL ALUMINIUM COVER PLATE  
COLOUR TO MATCH WINDOW FRAMES

## PROJECT



Australian Government



## DESIGN

Acacia House

DESIGNED FOR

Cairns - Option 2

Technical drawings should be read with the Acacia House Cairns 'Design Options' document which includes building specifications and rating information.

## DETAILS

Drawing title: Elevation

Scale: 1:100

Paper size: A3

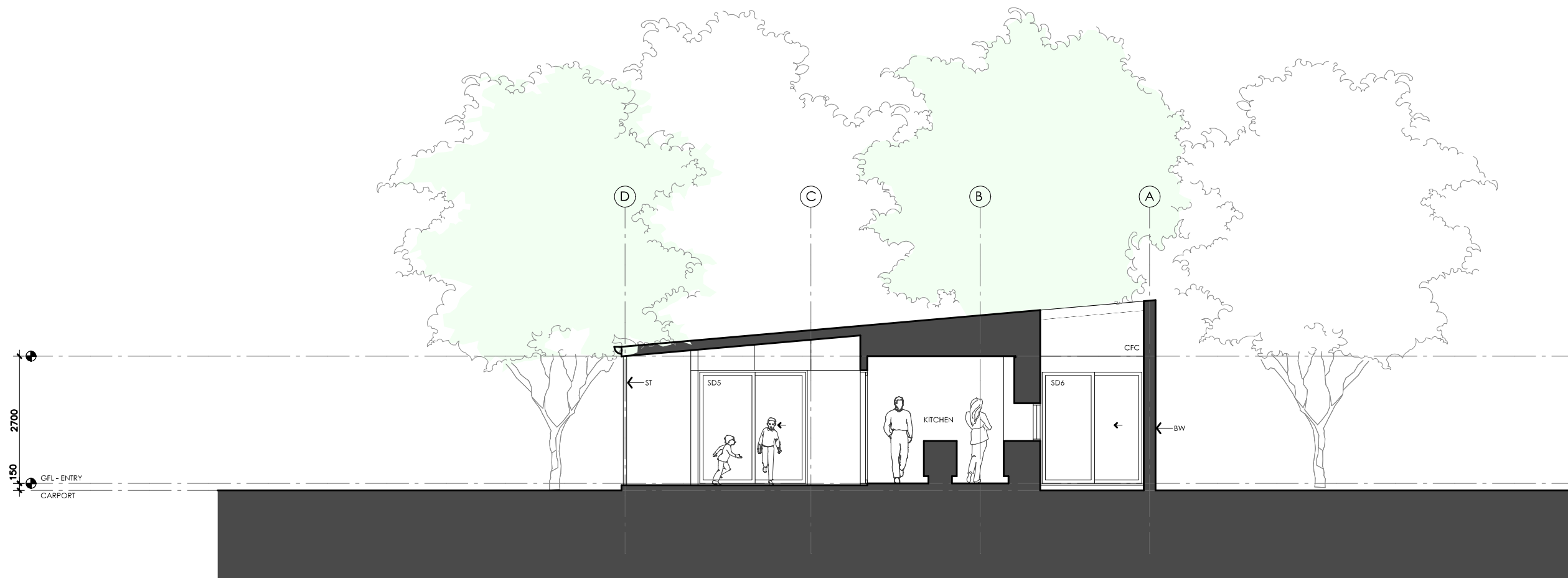
Drawing number: 7/10

Date issued: March 2020

Project stage: Preliminary




## DISCLAIMER

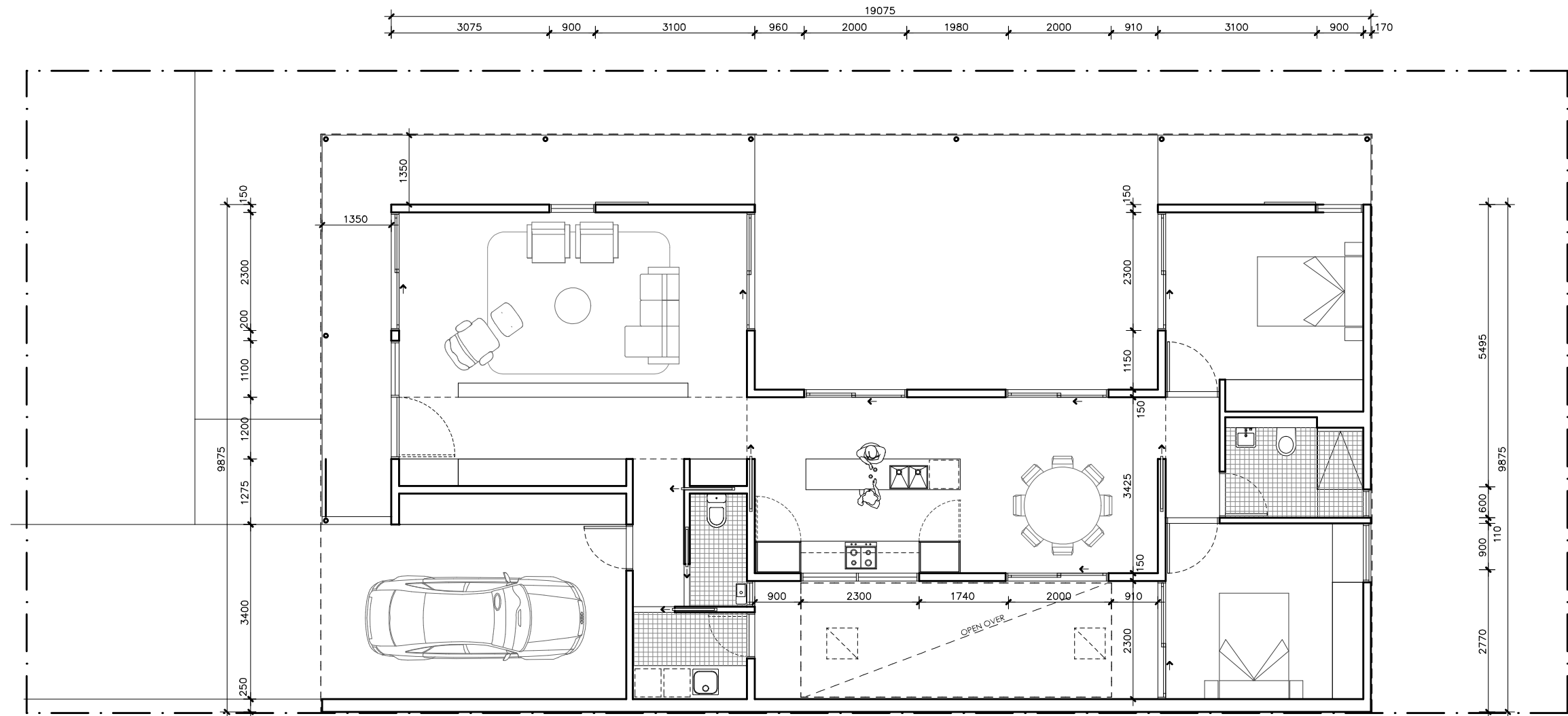
This house plan is a guide only. It does not constitute legal or other professional advice. You should seek legal or other professional advice in relation to your specific circumstances before adopting any recommendation made within it e.g. advice on structural engineering or building certification requirements. The Commonwealth does not accept responsibility for the accuracy or completeness of this plan, its fitness for a particular purpose, or compliance with any regulatory requirements and standards. Further, the Commonwealth also disclaims liability, to the extent permitted by law, for any liabilities, losses, damages and costs arising from any reliance on the contents of this plan.



01 | SECTION AA  
1:100

# ACACIA HOUSE

<p><b>LEGEND</b></p> <p>BW FACE BRICK WALL TYPE &amp; COLOUR TBC</p> <p>WB WEATHERBOARD CLADDING TYPE &amp; COLOUR TBC</p> <p>CFC COMPRESSED FC SHEET ON TIMBER FRAME EXPRESSED JOINT AT EDGES INDICATED</p> <p>MF FOLDED METAL FASCIA COLOUR TBC</p> <p>ST STEEL WORK COLOUR TBC</p> <p>GD GARAGE DOOR COLOUR TBC</p> <p>AL ALUMINIUM COVER PLATE COLOUR TO MATCH WINDOW FRAMES</p>	<p><b>PROJECT</b></p> <div>  <p>Australian Government</p> </div> <div>  <p>Australia's guide to environmentally sustainable homes</p> </div> <div>  <p>Design For Place</p> </div> <p><b>DISCLAIMER</b></p> <p>This house plan is a guide only. It does not constitute legal or other professional advice. You should seek legal or other professional advice in relation to your specific circumstances before adopting any recommendation made within it e.g. advice on structural engineering or building certification requirements. The Commonwealth does not accept responsibility for the accuracy or completeness of this plan, its fitness for a particular purpose, or compliance with any regulatory requirements and standards. Further, the Commonwealth also disclaims liability, to the extent permitted by law, for any liabilities, losses, damages and costs arising from any reliance on the contents of this plan.</p>	<p><b>DESIGN</b></p> <p><b>Acacia House</b></p> <p><b>DESIGNED FOR</b></p> <p><b>Cairns - Option 2</b></p> <p>Technical drawings should be read with the Acacia House Cairns 'Design Options' document which includes building specifications and rating information.</p>	<p><b>DETAILS</b></p> <p><b>Drawing title:</b> Section</p> <p><b>Scale:</b> 1:100</p> <p><b>Paper size:</b> A3</p> <p><b>Drawing number:</b> 8/10</p> <p><b>Date issued:</b> March 2020</p> <p><b>Project stage:</b> Preliminary</p>
--	---	---	--




# ACACIA HOUSE

<p>LEGEND</p> <p>N/A</p>	<p>PROJECT</p> <div>  <p>Australian Government</p> </div> <div>  <p>YourHome</p> <p>Australia's guide to environmentally sustainable homes</p> </div> <div>  <p>Design For Place</p> </div>	<p>DESIGN</p> <p>Acacia House</p> <p>DESIGNED FOR</p> <p>Cairns – Option 2</p>	<p>DETAILS</p> <p>Drawing title: Wall Setout Plan</p> <p>Scale: 1:100</p> <p>Paper size: A3</p>
	<p>DISCLAIMER</p> <p>This house plan is a guide only. It does not constitute legal or other professional advice. You should seek legal or other professional advice in relation to your specific circumstances before adopting any recommendation made within it e.g. advice on structural engineering or building certification requirements. The Commonwealth does not accept responsibility for the accuracy or completeness of this plan, its fitness for a particular purpose, or compliance with any regulatory requirements and standards. Further, the Commonwealth also disclaims liability, to the extent permitted by law, for any liabilities, losses, damages and costs arising from any reliance on the contents of this plan.</p>	<p>Technical drawings should be read with the Acacia House Cairns 'Design Options' document which includes building specifications and rating information.</p>	<p>Drawing number: 9/10</p> <p>Date issued: March 2020</p> <p>Project stage: Preliminary</p> <div>  </div>

REFERENCE	HEIGHT	WIDTH	TYPE	NOTES
D1	2400mm	1100mm	Solid door	1000mm Eave at 2700mm above Finished Floor Level
SD1	2400mm	2300mm	Glazed sliding door	1000mm Eave at 2700mm above Finished Floor Level
W1	2400mm	1100mm	Fixed window	1000mm Eave at 2700mm above Finished Floor Level
W2	2400mm	900mm	Louvres	1000mm Eave at 2700mm above Finished Floor Level See elevations for breakdown of opening types
SD2	2400mm	2300mm	Glazed sliding door	1000mm Eave at 2700mm above Finished Floor Level
SD3	2400mm	2000mm	Glazed sliding door	1000mm Eave at 2700mm above Finished Floor Level
SD4	2400mm	2000mm	Glazed sliding door	1000mm Eave at 2700mm above Finished Floor Level
SD5	2400mm	2300mm	Glazed sliding door	1000mm Eave at 2700mm above Finished Floor Level
W3	2400mm	900mm	Louvres	1000mm Eave at 2700mm above Finished Floor Level See elevations for breakdown of opening types
W4	1440mm	600mm	Awning window	
W5	2400mm	900mm	Louvres	See elevations for breakdown of opening types
SD6	2400mm	2300mm	Glazed sliding door	1000mm Eave at 2700mm above Finished Floor Level
SD7	2400mm	2000mm	Glazed sliding door	
W6	800mm	2300mm	Fixed window	
W7	600mm	600mm	Glazed sliding door	1000mm Eave at 2700mm above Finished Floor Level
D2	2250mm	820mm	Glazed hinged door	1000mm Eave at 2700mm above Finished Floor Level

# ACACIA HOUSE

LEGEND N/A	PROJECT  <b>Australian Government</b>  <b>YourHome</b> Australia's guide to environmentally sustainable homes  <b>Design For Place</b>	DESIGN <b>Acacia House</b>  DESIGNED FOR <b>Cairns – Option 2</b>	DETAILS <b>Drawing title:</b> Window and Door Schedule  <b>Scale:</b> N/A  <b>Paper size:</b> A3  <b>Drawing number:</b> 10/10  <b>Date issued:</b> March 2020  <b>Project stage:</b> Preliminary
	DISCLAIMER This house plan is a guide only. It does not constitute legal or other professional advice. You should seek legal or other professional advice in relation to your specific circumstances before adopting any recommendation made within it e.g. advice on structural engineering or building certification requirements. The Commonwealth does not accept responsibility for the accuracy or completeness of this plan, its fitness for a particular purpose, or compliance with any regulatory requirements and standards. Further, the Commonwealth also disclaims liability, to the extent permitted by law, for any liabilities, losses, damages and costs arising from any reliance on the contents of this plan.	Technical drawings should be read with the Acacia House Cairns 'Design Options' document which includes building specifications and rating information.	