



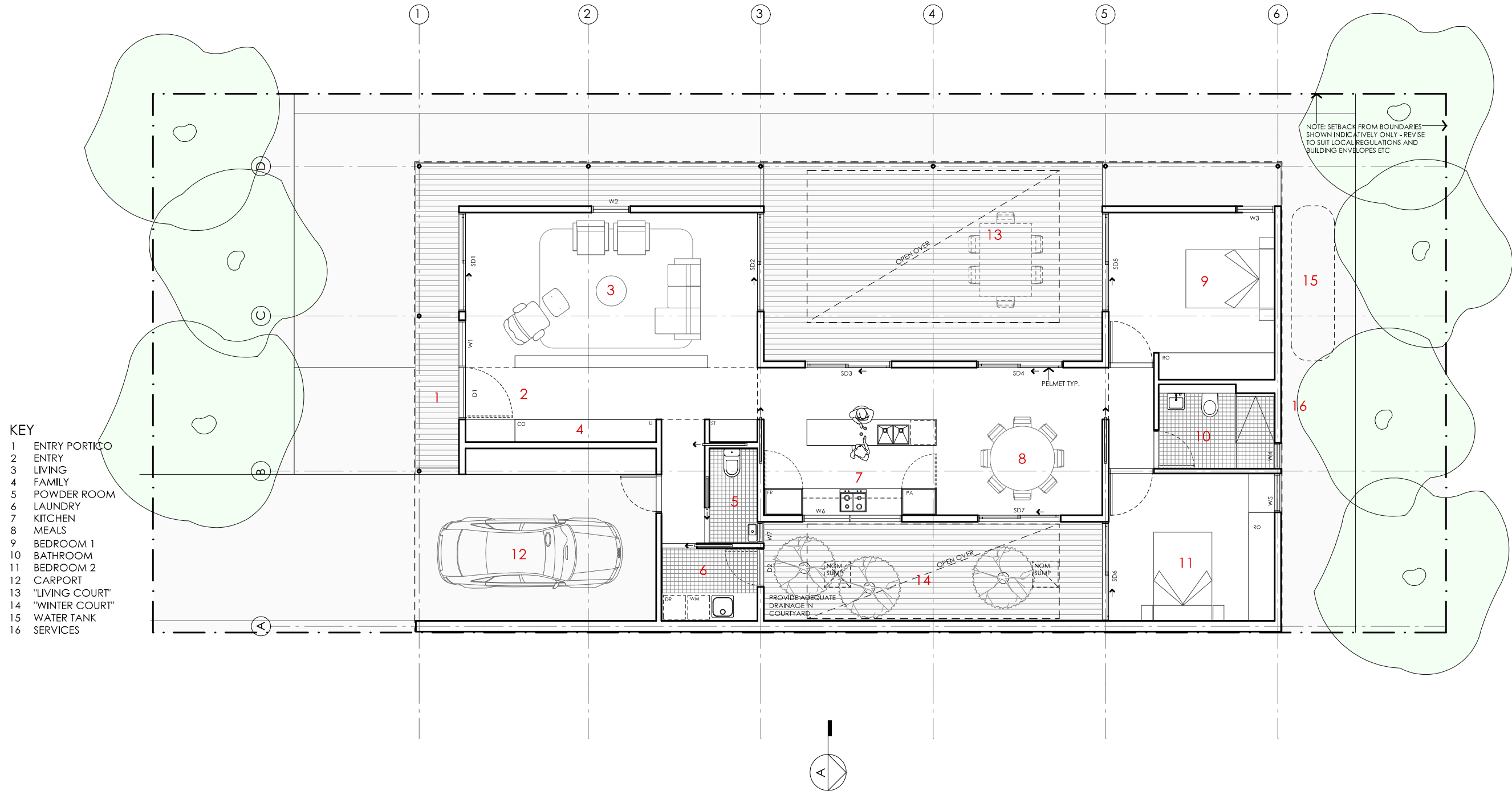






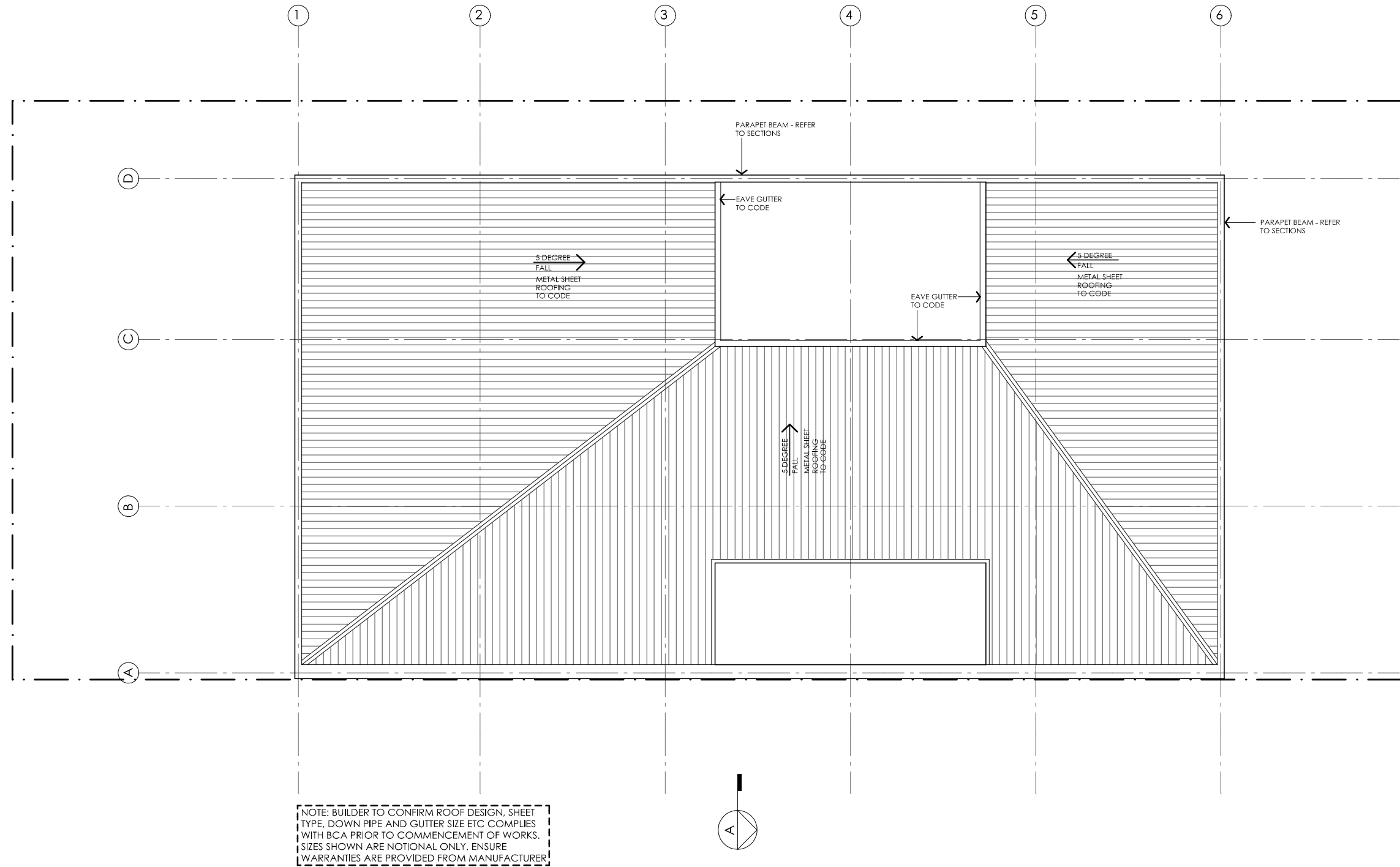
ACACIA HOUSE

<p>LEGEND</p> <p>N/A</p>	<p>PROJECT</p> <div>  <p>Australian Government</p> </div> <div>  <p>Australia's guide to environmentally sustainable homes</p> </div> <div>  <p>Design For Place</p> </div>	<p>DESIGN</p> <p>Acacia House</p> <p>DESIGNED FOR</p> <p>Adelaide</p>	<p>DETAILS</p> <p>Drawing title: Site Plan</p> <p>Scale: 1:200</p> <p>Paper size: A3</p>
	<p>DISCLAIMER</p> <p>This house plan is a guide only. It does not constitute legal or other professional advice. You should seek legal or other professional advice in relation to your specific circumstances before adopting any recommendation made within it e.g. advice on structural engineering or building certification requirements. The Commonwealth does not accept responsibility for the accuracy or completeness of this plan, its fitness for a particular purpose, or compliance with any regulatory requirements and standards. Further, the Commonwealth also disclaims liability, to the extent permitted by law, for any liabilities, losses, damages and costs arising from any reliance on the contents of this plan.</p>	<p>Technical drawings should be read with the Acacia House Adelaide 'Design Options' document which includes building specifications and rating information.</p>	<p>Drawing number: 1/10</p> <p>Date issued: March 2020</p> <p>Project stage: Preliminary</p> <div> <p>N</p>  </div>



ACACIA HOUSE

NOTES GFL LIVING 123 m2 CARPORT 23 m2 TOTAL GFA 146 m2 (including carport) <small>NOTE: GFA CALCULATIONS DO NOT INCLUDE DECKS, TERRACES, COURTYARDS, VERANDAS, VOIDS, STAIRS & BALCONIES @ UFL. NOTE THAT INTERNAL ROOM DIMENSIONS ARE NOMINAL ONLY AND GENERALLY INCLUDE JOINERY WITHIN THOSE DIMENSIONS.</small>	PROJECT  Australian Government  YourHome Australia's guide to environmentally sustainable homes  Design For Place DISCLAIMER <p>This house plan is a guide only. It does not constitute legal or other professional advice. You should seek legal or other professional advice in relation to your specific circumstances before adopting any recommendation made within it e.g. advice on structural engineering or building certification requirements. The Commonwealth does not accept responsibility for the accuracy or completeness of this plan, its fitness for a particular purpose, or compliance with any regulatory requirements and standards. Further, the Commonwealth also disclaims liability, to the extent permitted by law, for any liabilities, losses, damages and costs arising from any reliance on the contents of this plan.</p>	DESIGN Acacia House DESIGNED FOR Adelaide Technical drawings should be read with the Acacia House Adelaide 'Design Options' document which includes building specifications and rating information.	DETAILS Drawing title: Floor Plan Scale: 1:100 Paper size: A3 Drawing number: 2/10 Date issued: March 2020 Project stage: Preliminary 
---	--	---	---



ACACIA HOUSE

NOTES	
GFL LIVING CARPORT	123 m2 23 m2
TOTAL GFA	146 m2 (including carport)
<small>NOTE: GFA CALCULATIONS DO NOT INCLUDE DECKS, TERRACES, COURTYARDS, VERANDAS, VOIDS, STAIRS & BALCONIES @ UFL. NOTE THAT INTERNAL ROOM DIMENSIONS ARE NOMINAL ONLY AND GENERALLY INCLUDE JOINERY WITHIN THOSE DIMENSIONS.</small>	

PROJECT

 Australian Government



DISCLAIMER

This house plan is a guide only. It does not constitute legal or other professional advice. You should seek legal or other professional advice in relation to your specific circumstances before adopting any recommendation made within it e.g. advice on structural engineering or building certification requirements. The Commonwealth does not accept responsibility for the accuracy or completeness of this plan, its fitness for a particular purpose, or compliance with any regulatory requirements and standards. Further, the Commonwealth also disclaims liability, to the extent permitted by law, for any liabilities, losses, damages and costs arising from any reliance on the contents of this plan.

DESIGN
Acacia House

DESIGNED FOR
Adelaide

Technical drawings should be read with the Acacia House Adelaide 'Design Options' document which includes building specifications and rating information.

DETAILS

Drawing title: Roof Plan

Scale: 1:100

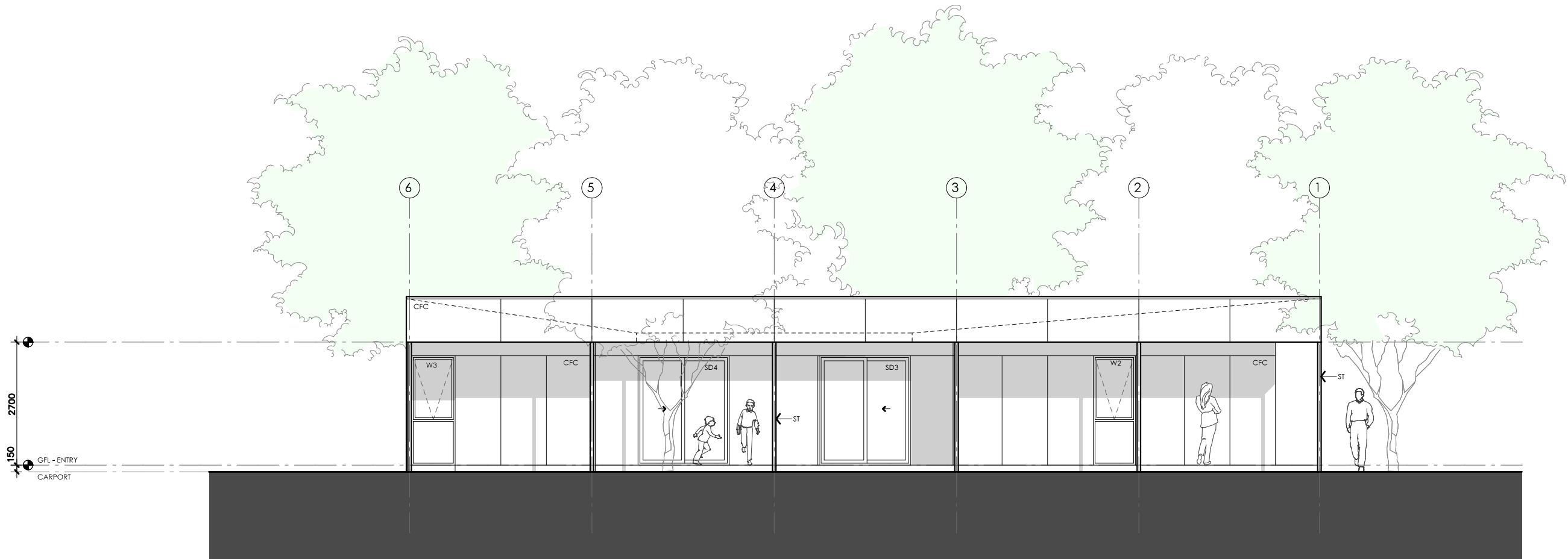
Paper size: A3

Drawing number: 3/10

Date issued: March 2020




Project stage: Preliminary





01 | EAST ELEVATION
1:100




ACACIA HOUSE

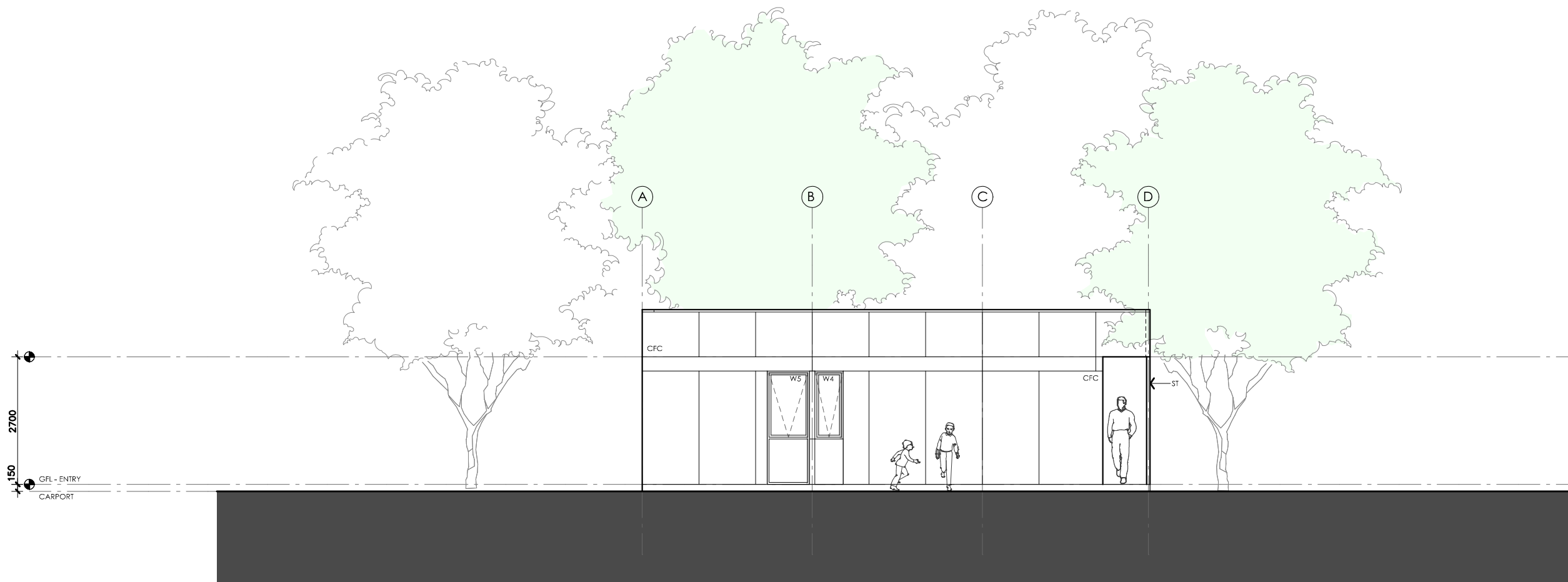
<p>LEGEND</p> <p>BW FACE BRICK WALL TYPE & COLOUR TBC</p> <p>WB WEATHERBOARD CLADDING TYPE & COLOUR TBC</p> <p>CFC COMPRESSED FC SHEET ON TIMBER FRAME EXPRESSED JOINT AT EDGES INDICATED</p> <p>MF FOLDED METAL FASCIA COLOUR TBC</p> <p>ST STEEL WORK COLOUR TBC</p> <p>GD GARAGE DOOR COLOUR TBC</p> <p>AL ALUMINIUM COVER PLATE COLOUR TO MATCH WINDOW FRAMES</p>	<p>PROJECT</p> <div>  <p>Australian Government</p> </div> <div>  <p>YourHome Australia's guide to environmentally sustainable homes</p> </div> <div>  <p>Design For Place</p> </div> <p>DISCLAIMER</p> <p>This house plan is a guide only. It does not constitute legal or other professional advice. You should seek legal or other professional advice in relation to your specific circumstances before adopting any recommendation made within it e.g. advice on structural engineering or building certification requirements. The Commonwealth does not accept responsibility for the accuracy or completeness of this plan, its fitness for a particular purpose, or compliance with any regulatory requirements and standards. Further, the Commonwealth also disclaims liability, to the extent permitted by law, for any liabilities, losses, damages and costs arising from any reliance on the contents of this plan.</p>	<p>DESIGN</p> <p>Acacia House</p> <p>DESIGNED FOR</p> <p>Adelaide</p> <p>Technical drawings should be read with the Acacia House Adelaide 'Design Options' document which includes building specifications and rating information.</p>	<p>DETAILS</p> <p>Drawing title: Elevation</p> <p>Scale: 1:100</p> <p>Paper size: A3</p> <p>Drawing number: 4/10</p> <p>Date issued: March 2020</p> <p>Project stage: Preliminary</p>
--	--	--	--



01 | NORTH ELEVATION
1:100

ACACIA HOUSE

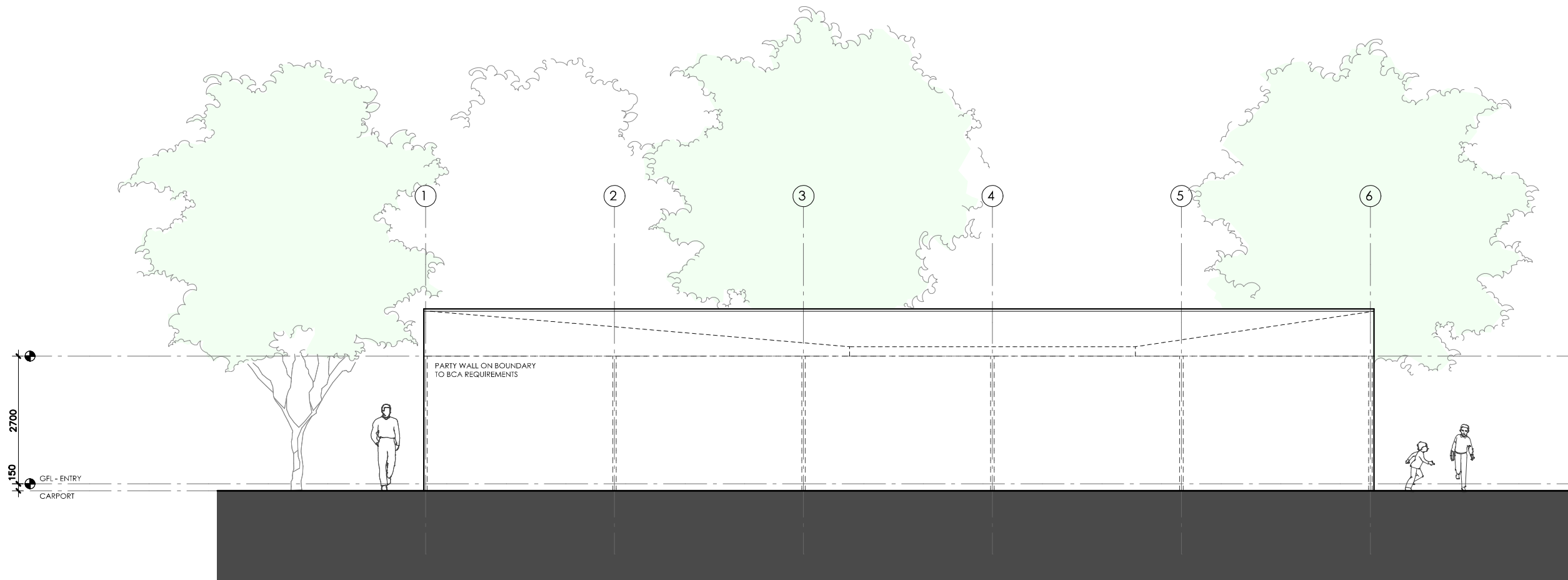
LEGEND BW FACE BRICK WALL TYPE & COLOUR TBC WB WEATHERBOARD CLADDING TYPE & COLOUR TBC CFC COMPRESSED FC SHEET ON TIMBER FRAME EXPRESSED JOINT AT EDGES INDICATED MF FOLDED METAL FASCIA COLOUR TBC ST STEEL WORK COLOUR TBC GD GARAGE DOOR COLOUR TBC AL ALUMINIUM COVER PLATE COLOUR TO MATCH WINDOW FRAMES	PROJECT  Australian Government  YourHome Australia's guide to environmentally sustainable homes  Design For Place DISCLAIMER This house plan is a guide only. It does not constitute legal or other professional advice. You should seek legal or other professional advice in relation to your specific circumstances before adopting any recommendation made within it e.g. advice on structural engineering or building certification requirements. The Commonwealth does not accept responsibility for the accuracy or completeness of this plan, its fitness for a particular purpose, or compliance with any regulatory requirements and standards. Further, the Commonwealth also disclaims liability, to the extent permitted by law, for any liabilities, losses, damages and costs arising from any reliance on the contents of this plan.	DESIGN Acacia House DESIGNED FOR Adelaide Technical drawings should be read with the Acacia House Adelaide 'Design Options' document which includes building specifications and rating information.	DETAILS Drawing title: Elevation Scale: 1:100 Paper size: A3 Drawing number: 5/10 Date issued: March 2020 Project stage: Preliminary
--	--	---	---



01 | SOUTH ELEVATION
1:100




ACACIA HOUSE

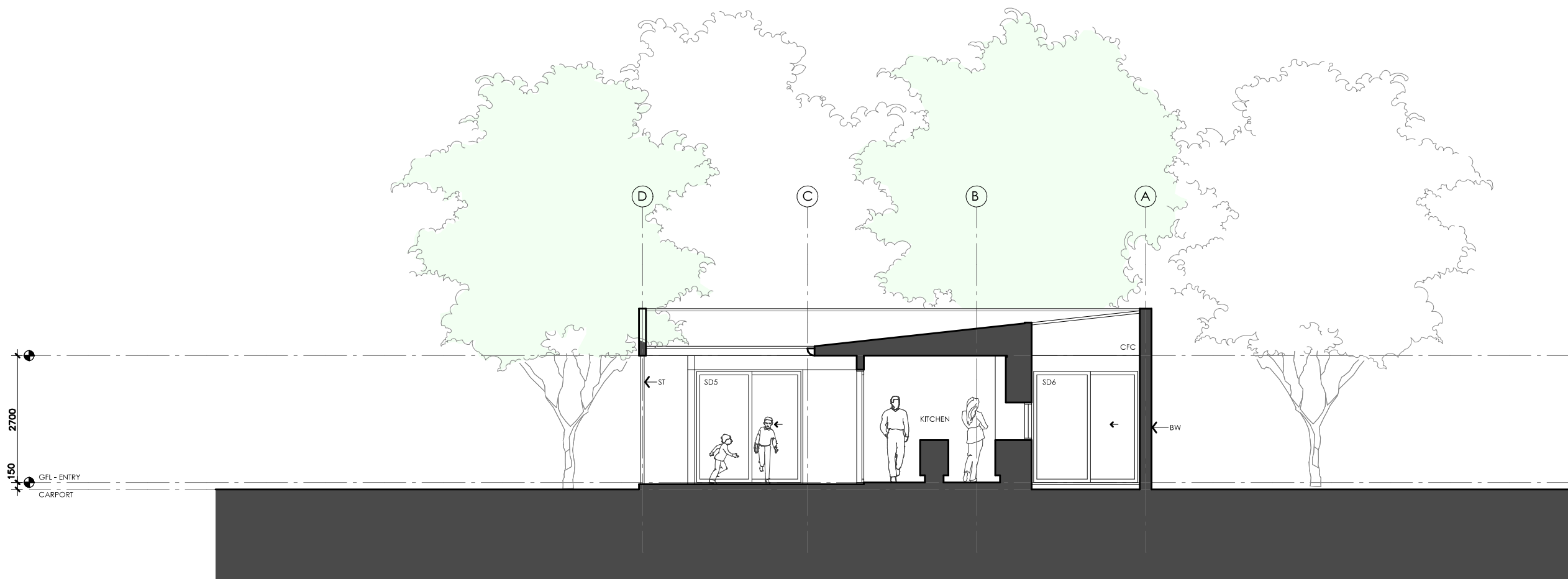
<p>LEGEND</p> <p>BW FACE BRICK WALL TYPE & COLOUR TBC</p> <p>WB WEATHERBOARD CLADDING TYPE & COLOUR TBC</p> <p>CFC COMPRESSED FC SHEET ON TIMBER FRAME EXPRESSED JOINT AT EDGES INDICATED</p> <p>MF FOLDED METAL FASCIA COLOUR TBC</p> <p>ST STEEL WORK COLOUR TBC</p> <p>GD GARAGE DOOR COLOUR TBC</p> <p>AL ALUMINIUM COVER PLATE COLOUR TO MATCH WINDOW FRAMES</p>	<p>PROJECT</p> <div>Australian Government</div> <div>YourHome Australia's guide to environmentally sustainable homes</div> <div>Design For Place</div> <p>DISCLAIMER</p> <p>This house plan is a guide only. It does not constitute legal or other professional advice. You should seek legal or other professional advice in relation to your specific circumstances before adopting any recommendation made within it e.g. advice on structural engineering or building certification requirements. The Commonwealth does not accept responsibility for the accuracy or completeness of this plan, its fitness for a particular purpose, or compliance with any regulatory requirements and standards. Further, the Commonwealth also disclaims liability, to the extent permitted by law, for any liabilities, losses, damages and costs arising from any reliance on the contents of this plan.</p>	<p>DESIGN</p> <p>Acacia House</p> <p>DESIGNED FOR</p> <p>Adelaide</p> <p>Technical drawings should be read with the Acacia House Adelaide 'Design Options' document which includes building specifications and rating information.</p>	<p>DETAILS</p> <p>Drawing title: Elevation</p> <p>Scale: 1:100</p> <p>Paper size: A3</p> <p>Drawing number: 6/10</p> <p>Date issued: March 2020</p> <p>Project stage: Preliminary</p>
--	---	--	--



01 WEST ELEVATION
1:100

ACACIA HOUSE

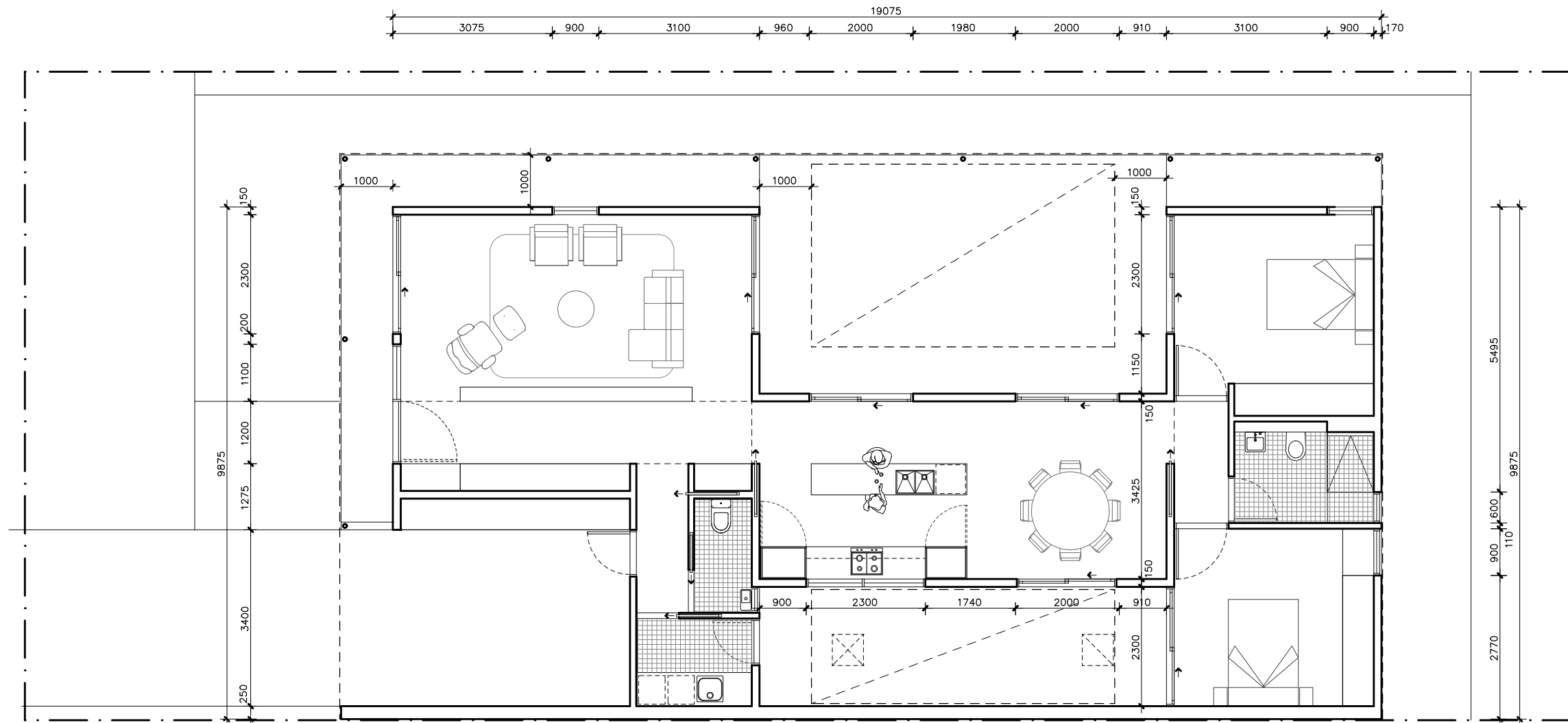
<div>LEGEND</div> <div><div><div>BW</div><div>FACE BRICK WALL TYPE & COLOUR TBC</div></div><div><div>WB</div><div>WEATHERBOARD CLADDING TYPE & COLOUR TBC</div></div><div><div>CFC</div><div>COMPRESSED FC SHEET ON TIMBER FRAME EXPRESSED JOINT AT EDGES INDICATED</div></div><div><div>MF</div><div>FOLDED METAL FASCIA COLOUR TBC</div></div><div><div>ST</div><div>STEEL WORK COLOUR TBC</div></div><div><div>GD</div><div>GARAGE DOOR COLOUR TBC</div></div><div><div>AL</div><div>ALUMINIUM COVER PLATE COLOUR TO MATCH WINDOW FRAMES</div></div></div>	<div>PROJECT</div> <div><div><div></div><div>Australian Government</div></div><div><div></div><div>YourHome</div><div>Australia's guide to environmentally sustainable homes</div></div><div><div></div><div>Design For Place</div></div></div>	<div>DESIGN</div> <div>Acacia House</div> <div>DESIGNED FOR</div> <div>Adelaide</div> <div>Technical drawings should be read with the Acacia House Adelaide 'Design Options' document which includes building specifications and rating information.</div>	<div>DETAILS</div> <div>Drawing title: Elevation</div> <div>Scale: 1:100</div> <div>Paper size: A3</div> <div>Drawing number: 7/10</div> <div>Date issued: March 2020</div> <div>Project stage: Preliminary</div>
	<div>DISCLAIMER</div> <div>This house plan is a guide only. It does not constitute legal or other professional advice. You should seek legal or other professional advice in relation to your specific circumstances before adopting any recommendation made within it e.g. advice on structural engineering or building certification requirements. The Commonwealth does not accept responsibility for the accuracy or completeness of this plan, its fitness for a particular purpose, or compliance with any regulatory requirements and standards. Further, the Commonwealth also disclaims liability, to the extent permitted by law, for any liabilities, losses, damages and costs arising from any reliance on the contents of this plan.</div>		







01 | SECTION AA
1:100

ACACIA HOUSE

LEGEND BW FACE BRICK WALL TYPE & COLOUR TBC WB WEATHERBOARD CLADDING TYPE & COLOUR TBC CFC COMPRESSED FC SHEET ON TIMBER FRAME EXPRESSED JOINT AT EDGES INDICATED MF FOLDED METAL FASCIA COLOUR TBC ST STEEL WORK COLOUR TBC GD GARAGE DOOR COLOUR TBC AL ALUMINIUM COVER PLATE COLOUR TO MATCH WINDOW FRAMES	PROJECT  Australian Government  YourHome Australia's guide to environmentally sustainable homes  Design For Place DISCLAIMER This house plan is a guide only. It does not constitute legal or other professional advice. You should seek legal or other professional advice in relation to your specific circumstances before adopting any recommendation made within it e.g. advice on structural engineering or building certification requirements. The Commonwealth does not accept responsibility for the accuracy or completeness of this plan, its fitness for a particular purpose, or compliance with any regulatory requirements and standards. Further, the Commonwealth also disclaims liability, to the extent permitted by law, for any liabilities, losses, damages and costs arising from any reliance on the contents of this plan.	DESIGN Acacia House DESIGNED FOR Adelaide Technical drawings should be read with the Acacia House Adelaide 'Design Options' document which includes building specifications and rating information.	DETAILS Drawing title: Section Scale: 1:100 Paper size: A3 Drawing number: 8/10 Date issued: March 2020 Project stage: Preliminary
--	--	---	---





ACACIA HOUSE

LEGEND N/A	PROJECT  Australian Government  YourHome Australia's guide to environmentally sustainable homes  Design For Place	DESIGN Acacia House DESIGNED FOR Adelaide	DETAILS Drawing title: Wall Setout Plan Scale: 1:100 Paper size: A3
	DISCLAIMER This house plan is a guide only. It does not constitute legal or other professional advice. You should seek legal or other professional advice in relation to your specific circumstances before adopting any recommendation made within it e.g. advice on structural engineering or building certification requirements. The Commonwealth does not accept responsibility for the accuracy or completeness of this plan, its fitness for a particular purpose, or compliance with any regulatory requirements and standards. Further, the Commonwealth also disclaims liability, to the extent permitted by law, for any liabilities, losses, damages and costs arising from any reliance on the contents of this plan.	Technical drawings should be read with the Acacia House Adelaide 'Design Options' document which includes building specifications and rating information.	Drawing number: 9/10 Date issued: March 2020 Project stage: Preliminary 

REFERENCE	HEIGHT	WIDTH	TYPE	NOTES
D1	2400mm	1100mm	Solid door	1000mm Eave at 2700mm above Finished Floor Level
SD1	2400mm	2300mm	Glazed sliding door	1000mm Eave at 2700mm above Finished Floor Level
W1	2400mm	1100mm	Fixed window	1000mm Eave at 2700mm above Finished Floor Level
W2	2400mm	900mm	Fixed / awning window	1000mm Eave at 2700mm above Finished Floor Level See elevations for breakdown of opening types
SD2	2400mm	2300mm	Glazed sliding door	1000mm Eave at 2700mm above Finished Floor Level
SD3	2400mm	2000mm	Glazed sliding door	1000mm Eave at 2700mm above Finished Floor Level
SD4	2400mm	2000mm	Glazed sliding door	1000mm Eave at 2700mm above Finished Floor Level
SD5	2400mm	2300mm	Glazed sliding door	1000mm Eave at 2700mm above Finished Floor Level
W3	2400mm	900mm	Fixed / awning window	1000mm Eave at 2700mm above Finished Floor Level See elevations for breakdown of opening types
W4	1440mm	600mm	Awning window	
W5	2400mm	900mm	Fixed / awning window	See elevations for breakdown of opening types
SD6	2400mm	2300mm	Glazed sliding door	1000mm Eave at 2700mm above Finished Floor Level
SD7	2400mm	2000mm	Glazed sliding door	
W6	800mm	2300mm	Fixed window	
W7	600mm	600mm	Sliding window	1000mm Eave at 2700mm above Finished Floor Level
D2	2250mm	820mm	Glazed hinged door	1000mm Eave at 2700mm above Finished Floor Level

ACACIA HOUSE

LEGEND N/A	PROJECT <div> Australian Government</div> <div> YourHome Australia's guide to environmentally sustainable homes</div> <div> Design For Place</div>	DESIGN Acacia House	DETAILS Drawing title: Window and Door Schedule Scale: N/A Paper size: A3 Drawing number: 10/10 Date issued: March 2020 Project stage: Preliminary
	DISCLAIMER This house plan is a guide only. It does not constitute legal or other professional advice. You should seek legal or other professional advice in relation to your specific circumstances before adopting any recommendation made within it e.g. advice on structural engineering or building certification requirements. The Commonwealth does not accept responsibility for the accuracy or completeness of this plan, its fitness for a particular purpose, or compliance with any regulatory requirements and standards. Further, the Commonwealth also disclaims liability, to the extent permitted by law, for any liabilities, losses, damages and costs arising from any reliance on the contents of this plan.	DESIGNED FOR Adelaide Technical drawings should be read with the Acacia House Adelaide 'Design Options' document which includes building specifications and rating information.	